

2235 N LAKEWOOD AVENUE #DN
UNIQUE TOWNHOUSE IN LINCOLN PARK





ROOM DIMENSIONS

FOYER : 3' × 10'
LIVING ROOM : 19' × 23'
DECK : 19' × 13'
DINING AREA : 19' × 12'
KITCHEN : 13' × 11'
BALCONY : 19' × 5'
BATHROOM : 5' × 7'
PRIMARY BEDROOM : 13' × 10'
PRIMARY BATHROOM : 11' × 6'
WALK IN CLOSET : 6' × 4'
SECOND BEDROOM : 9' × 10'
RECREATION ROOM : 15' × 17'
HALF BATHROOM : 5' × 5'
UTILITY ROOM : 11' × 8'

2 BEDROOM

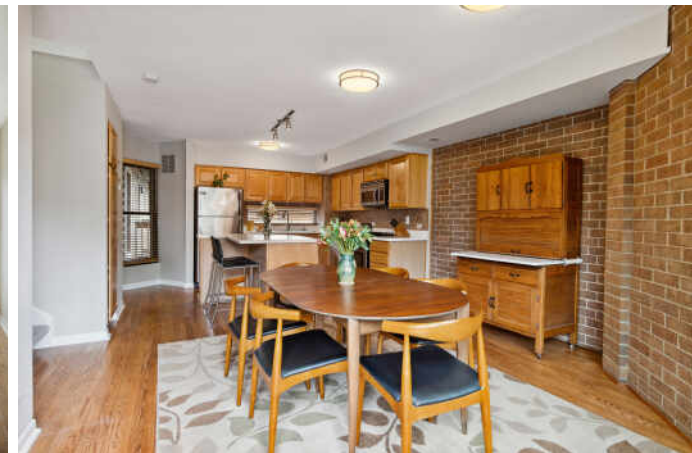
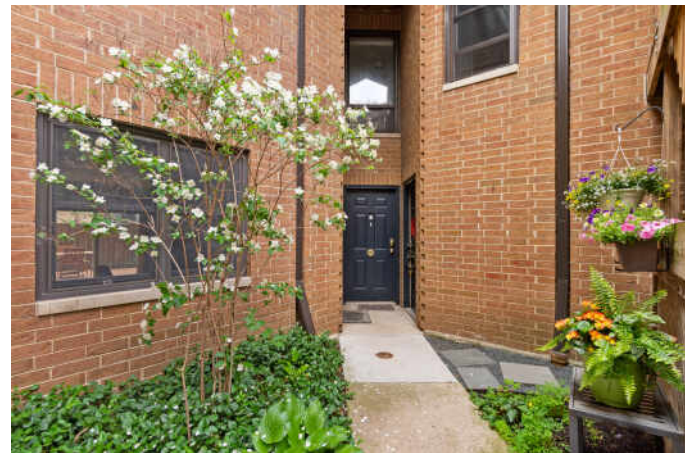
2.1 BATH

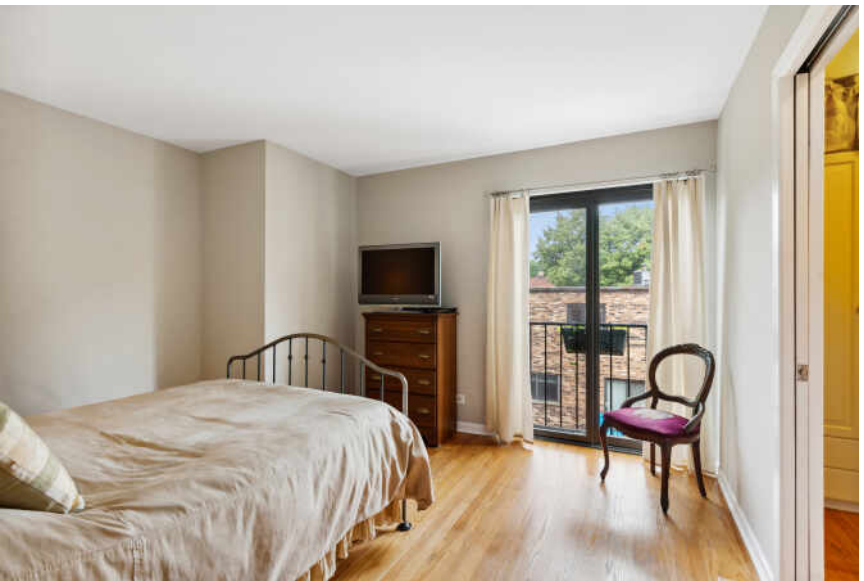
TAXES: \$8,857.21

ASSESSMENTS: \$278

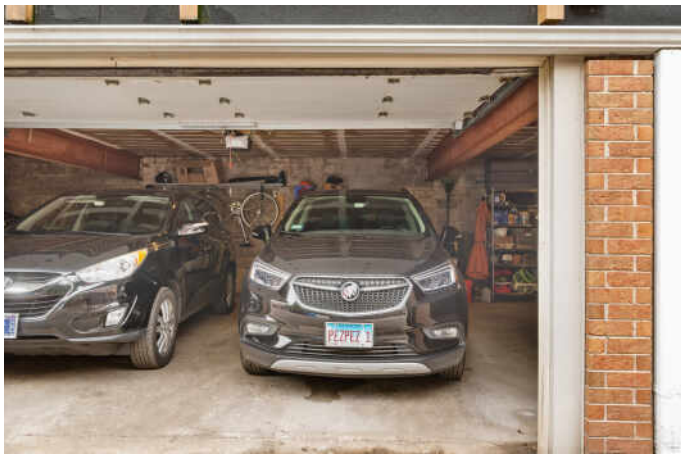
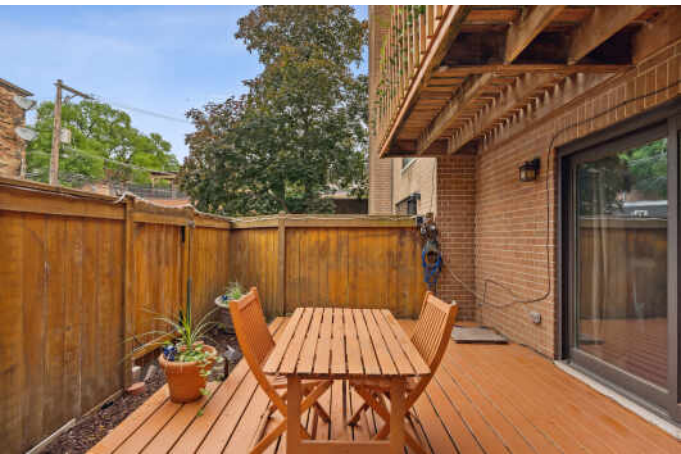
WELCOME HOME!

Don't miss this meticulously maintained and totally unique townhouse on a fabulous tree-lined side street in Lincoln Park. The secure front entrance of the association leads into a private and beautifully landscaped internal courtyard. Cross the threshold to find hardwood floors in pristine condition, exposed brick walls and open concept living areas that make for a dramatic alternative to more conventional townhome options. This 3-story plus lower level residence has 2 bedrooms and 2 1/2 baths. The main level features a large L-shaped living room anchored by a wood burning fireplace and opens onto the private patio beyond. The second level kitchen has ample counter and cabinet space, stainless appliances and counter seating and is open to the dining area and a large deck beyond. The third floor features two nicely sized bedrooms. Light pours in through the skylight. The primary suite features a Juliet balcony, custom closets and an ensuite bath. There is space to spread out and an abundance of storage throughout. Numerous recent improvements and upgrades make this a turnkey option. Garage parking is included in the cost and is accessed through the secure courtyard. Private and serene, you will love this unique townhome with multiple private outdoor spaces nestled on a quiet side street. Close to the Webster, Armitage, Halsted and Clybourn retail districts and surrounded by a number of city parks and a stone's throw from Lakeshore Athletic Club, DePaul U and the CTA Fullerton el, this location is unbeatable. Oscar Mayer School District.











LINCOLN PARK RESIDENTS HAVE IT ALL - FROM THE ARTS TO ITS FAMED ZOO - RIGHT IN THEIR BACKYARD.

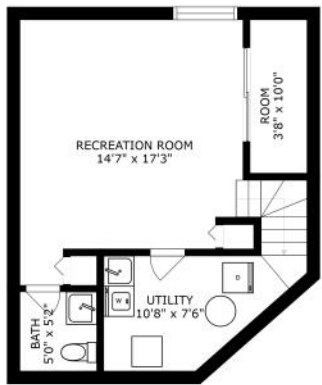
The neighborhood includes quiet tree-lined residential blocks, DePaul University, and two major museums in addition to the Lincoln Park Zoo, one of the country's oldest zoos. There's also a wide array of entertainment, eateries, and hotspots.

An evening in Lincoln Park might include seeing a play at the acclaimed Steppenwolf Theatre and dining at a Michelin-rated restaurant or a quaint neighborhood café. Sports fans will find as many dive bars with the game on as foodies will find fine-dining restaurants with al-fresco seating.

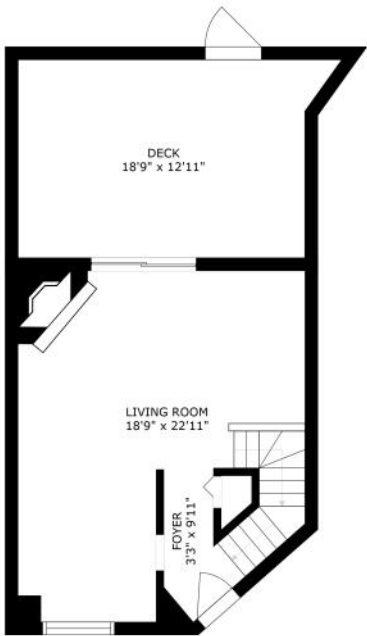
Lincoln Park is just as delightful by day. Residents are close to the lakefront and North Avenue Beach, parks, farmers markets, festivals, and countless shops, ranging from upscale boutiques on Armitage to larger retailers at the Clybourn Corridor.

Housing stock ranges from smaller townhomes and vintage condominiums to rehabs and new construction. Buyers around DePaul University can find loft condominiums in converted factories and warehouses. On its eastern edge, Lincoln Park features beautiful vintage brownstones along with high-rises with breathtaking views of the lake, park, North Pond Nature Sanctuary, and city skyline.

Located just two miles from downtown, Lincoln Park offers residents a quick commute to work. Public transportation abounds, with the CTA's Brown and Red lines serving the neighborhood in addition to several bus routes and Lake Shore Drive.



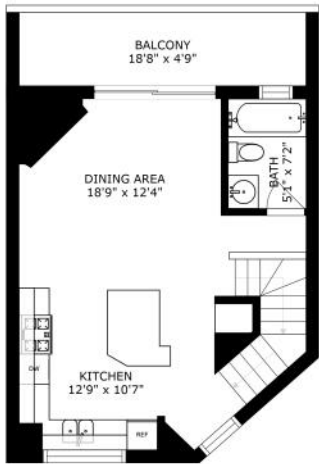
FLOOR 1



FLOOR 2

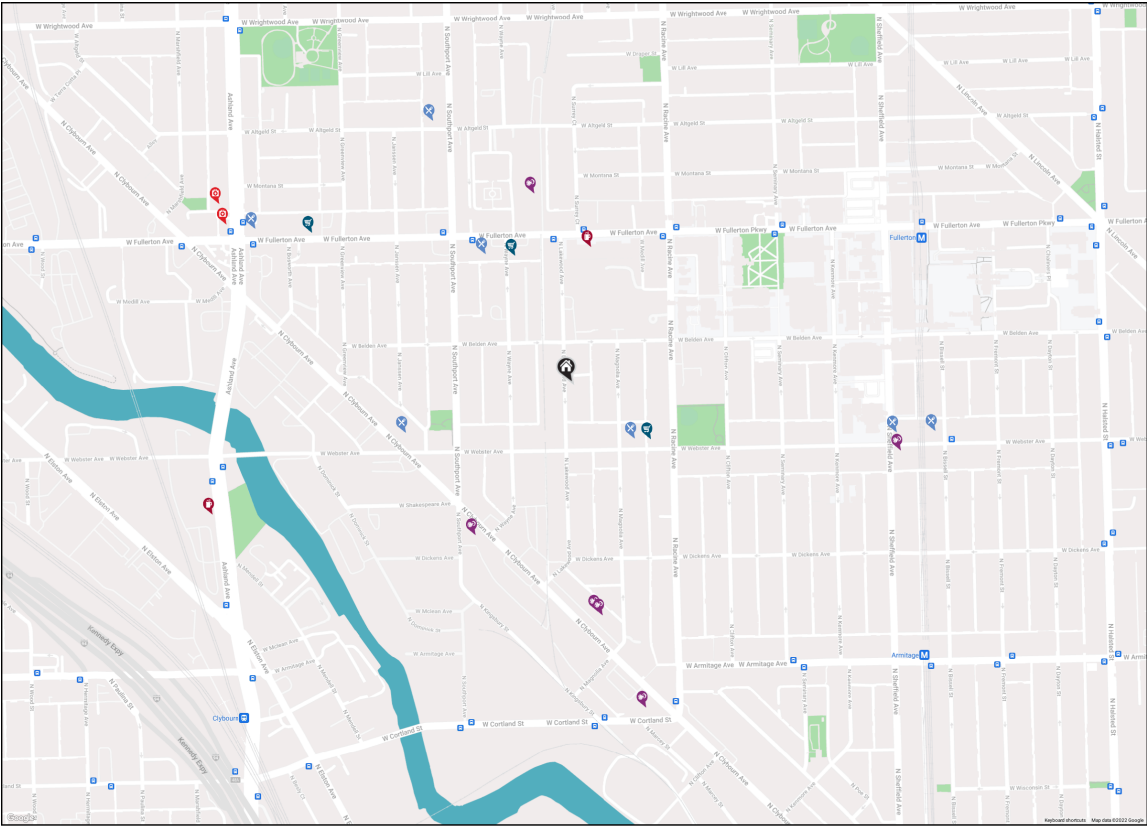


FLOOR 4



FLOOR 3

SIZES AND DIMENSIONS ARE APPROXIMATE, ACTUAL MAY VARY.



- RESTAURANTS**
- Floriole Cafe & Bakery
1220 WEST WEBSTER AVENUE, 0.1 MI
 - Pequod's Pizza
2207 NORTH CLYBOURN AVENUE, 0.2 MI
 - Mo's Asian Bistro
1353 WEST FULLERTON AVENUE, 0.2 MI
 - Bird's Nest
2500 NORTH SOUTHPORT AVENUE, 0.3 MI
 - Homeslice
938 WEST WEBSTER AVENUE, 0.4 MI
 - Jam 'n Honey
958 WEST WEBSTER AVENUE, 0.4 MI

- COFFEE SHOPS**
- Vegan Plate
1550 WEST FULLERTON AVENUE, 0.4 MI
 - Starbucks
1245 WEST FULLERTON AVENUE, 0.2 MI
 - Vero Coffee & Gelato
2112 NORTH ASHLAND AVENUE, 0.4 MI
 - Sweet Mandy B's Bakery
1208 WEST WEBSTER AVENUE, 0.1 MI

SHOPPING

- HEALTH CLUBS**
- The UPS Store
1341 WEST FULLERTON AVENUE, 0.2 MI
 - Walgreens
1520 WEST FULLERTON AVENUE, 0.3 MI
 - Lakeshore Sport & Fitness
1320 WEST FULLERTON AVENUE, 0.2 MI
 - Shred415 Lincoln Park
2150 NORTH CLYBOURN AVENUE, 0.2 MI
 - Row House
2051 NORTH CLYBOURN AVENUE, 0.3 MI
 - Club Pilates
2047 NORTH CLYBOURN AVENUE, 0.3 MI

- HOSPITALS**
- CorePower Yoga
959 WEST WEBSTER AVENUE, 0.4 MI
 - Orangetheory Fitness
2000 NORTH CLYBOURN AVENUE 115 D, 0.4 MI
 - Innovative Care
2400 NORTH ASHLAND AVENUE, 0.4 MI
 - Innovative Primary Care - Lincoln Park
2418 NORTH ASHLAND AVENUE, 0.5 MI



CAROLINE MOELLERING

(312) 320-9550

CAROLINEMOELLERING@ATPROPERTIES.COM

EXPERTISE + RESULTS + EXPERIENCE

CAROLINE MOELLERING

CITY HOMES *with style*



CHRISTIE'S
INTERNATIONAL REAL ESTATE

2235NLAKEWOODAVENUEDN.INFO