

**223 S GLENDALE AVENUE**  
BARRINGTON





4 BEDROOM  
2 BATH  
TAXES: \$12,137

## A WELCOMING HOME WITH ROOM TO GROW!

Just minutes from downtown Barrington, parks, Metra, and the award-winning District 220 schools, this 4-bedroom ranch offers a wonderful opportunity for first-time buyers or anyone looking for a special lot with long-term potential. Whether you imagine a stylish renovation, an addition, a pool, or a future new build, this property delivers endless possibilities in an unbeatable location.

- Quiet residential setting less than one mile to downtown Barrington.
- Enjoy single-level living with a spacious basement footprint, two wood-burning fireplaces, efficient boiler heat, a detached garage, and a separate shed for storage or hobbies.
- With its flat, deep backyard, this property offers privacy and endless options for play space, gardens, a future pool, addition, or even a new build down the road.
- If you're looking for a home you can personalize over time—or a prime Barrington Village address for your next vision—this property delivers comfort today and exciting potential for tomorrow.
- Rare opportunity to secure one of the largest residential parcels in the Village with room for a pool and outdoor kitchen, all in a desirable neighborhood close to everything Barrington has to offer.





















## THE VILLAGE OF **BARRINGTON** MAY HAVE THE LARGEST RESIDENTIAL HISTORIC DISTRICT IN THE STATE, BUT IT'S DEFINITELY NOT LIVING IN THE PAST

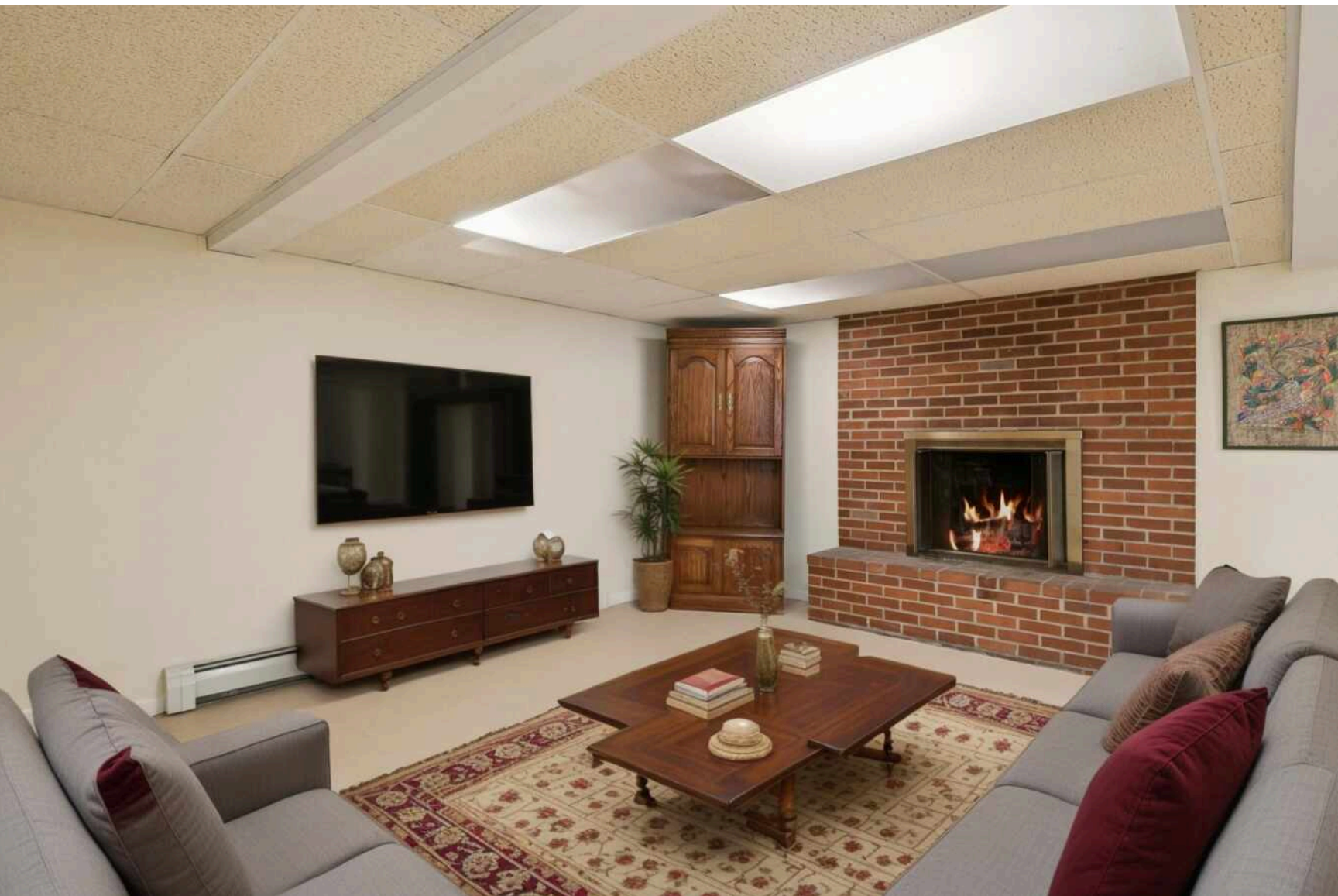
Many of the beautifully-restored Victorian, Gothic, and Queen Anne homes that line the village's main streets have been repurposed as unique shops and businesses. Meanwhile, homeowners have rehabbed and restored many historic homes back to their former glory with the addition of modern amenities. The village's historic theater opened in 1927 and still operates today.

Barrington also thrives when it comes to recreation. Citizens Park is one of the area's gems, offering wide-open spaces as well as tennis and basketball courts, cross-country ski trails, nature paths, an events pavilion, and a tree house.

The village's downtown center is filled with shoppers, diners, and residents enjoying one of the area's special events, whether it's an art festival, wine walk, or a farmers market. The nearby Barrington Metra station provides a convenient commute to downtown Chicago.

Barrington homes range from Victorians and Colonials to stunning new construction and sprawling mansions with large lots and water views.









## DAWN SULLIVAN

IL & WI BROKER

(815) 761-6504

DAWNSULLIVAN@ATPROPERTIES.COM



**DAWN SULLIVAN**  
GROUP

**@properties**

**CHRISTIE'S**  
INTERNATIONAL REAL ESTATE

All specifications, features, designs, price, assessments, taxes and materials are subject to change without notice. Depicted floor plans and architectural renderings are only an artist's impression.

