



225 E 1ST STREET HINSDALE



225 E 1ST STREET • HINSDALE
225E1ST.INFO



KATY PELLING LACROSSE BROKER

630.308.3692 mobile
630.230.0500 office
katyLaCrosse@atproperties.com

@properties | CHRISTIE'S
INTERNATIONAL REAL ESTATE

LP LUXURY
PORTFOLIO
INTERNATIONAL

225 E 1ST STREET • HINSDALE
225E1ST.INFO





225 E 1ST STREET

FEATURES

Rare opportunity to own one of the most magnificent properties in coveted Southeast Hinsdale! Just steps from town and train, this stunning home sits on almost one full acre with a private, park-like yard designed and maintained by Coventry Gardens. Home expansion in 2000 blends the home's original character and charm with today's luxuries. Voluminous two story great room with fireplace, wood beams, and floor to ceiling windows overlooking the 344 ft deep backyard. Light filled kitchen with island seating and breakfast nook opens to inviting screened in porch. Stunning brick paver patio and upper deck that wraps around the family room. First floor master suite with vaulted ceilings, cozy sitting area with fireplace, and custom, walk in his/hers closets. Convenience of laundry rooms on both first and second levels. First floor office with built in desks, cabinetry and shelving. Four generously sized bedrooms on 2nd level with custom closets and built ins. Don't miss this incredible opportunity to own one of the best locations in town!



KATY PELLING LACROSSE BROKER

630.308.3692 mobile
630.230.0500 office

katyLaCrosse@atproperties.com

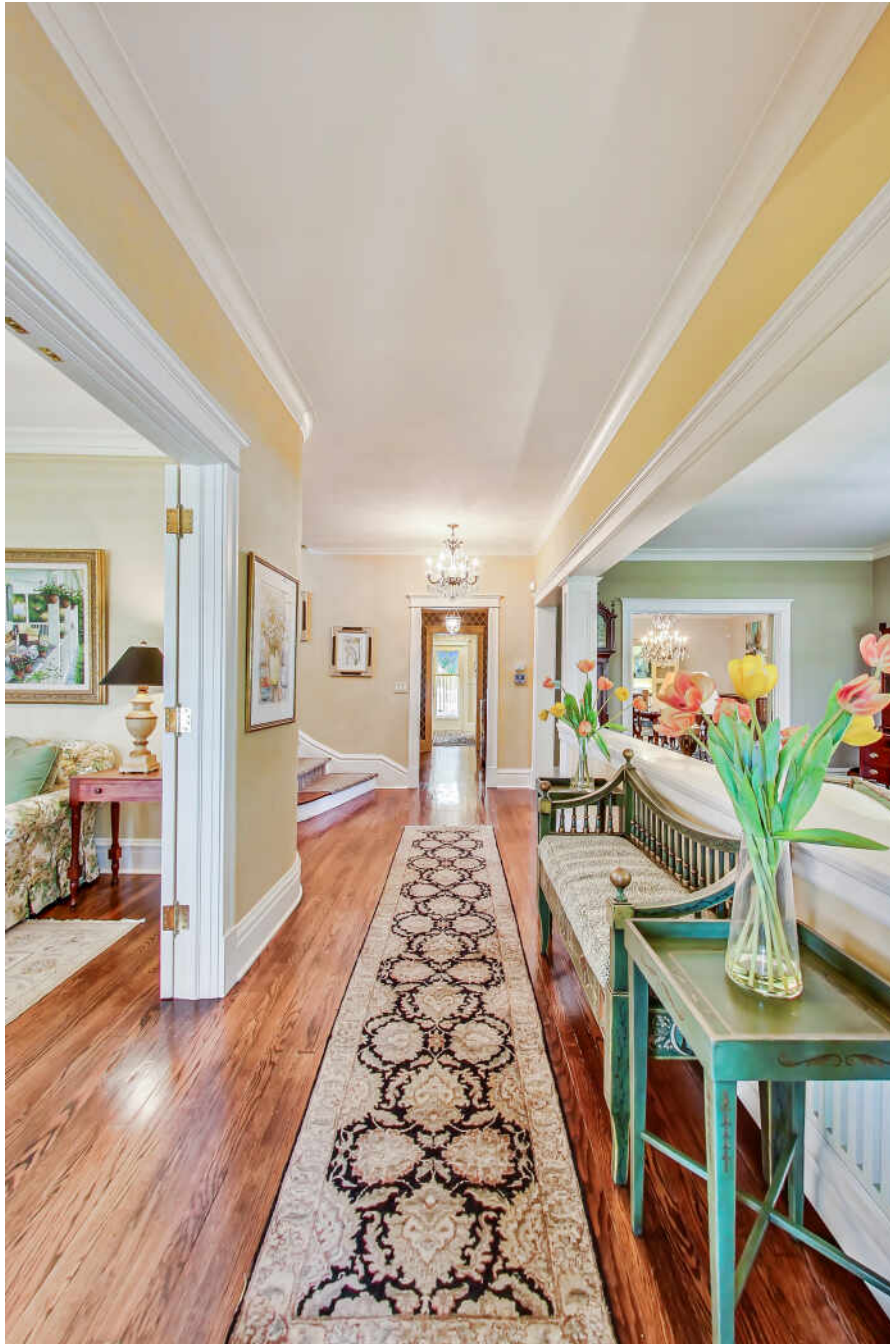






PORCH





FOYER







KITCHEN



FAMILY



OFFICE



PRIMARY BEDROOM

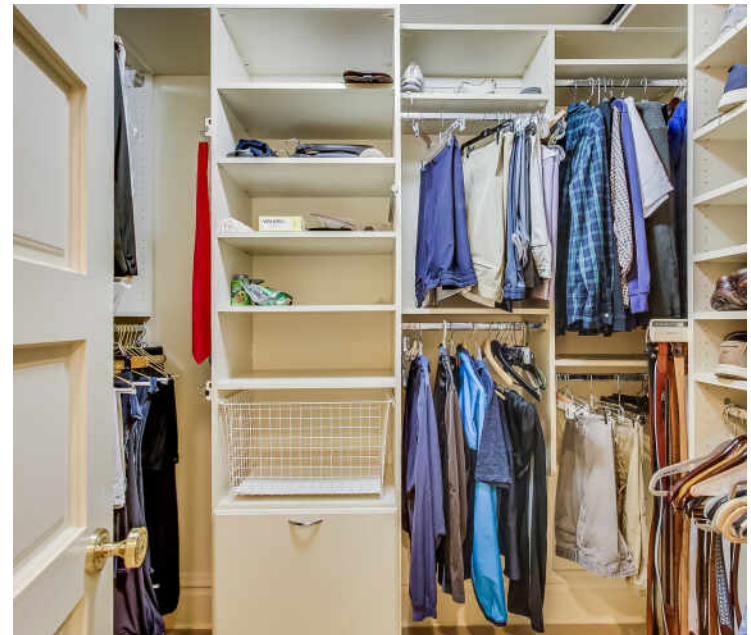




ENSUITE



WALK-IN CLOSET

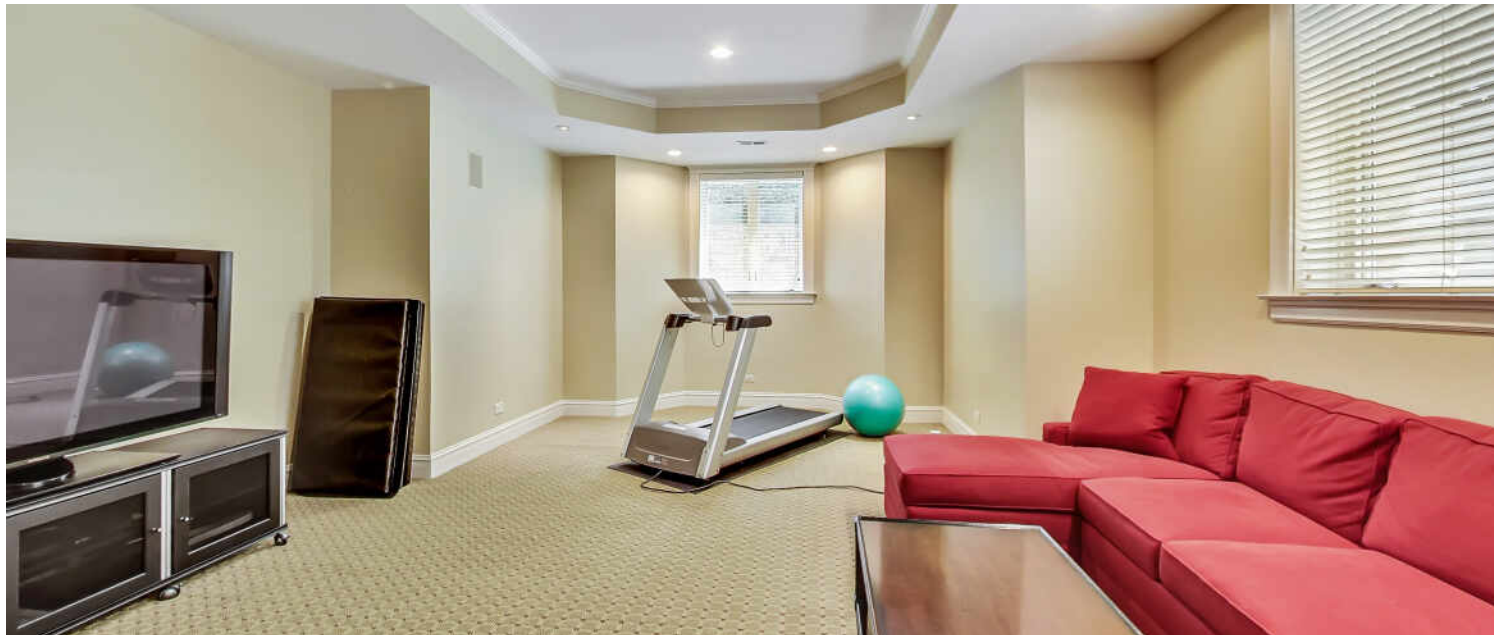






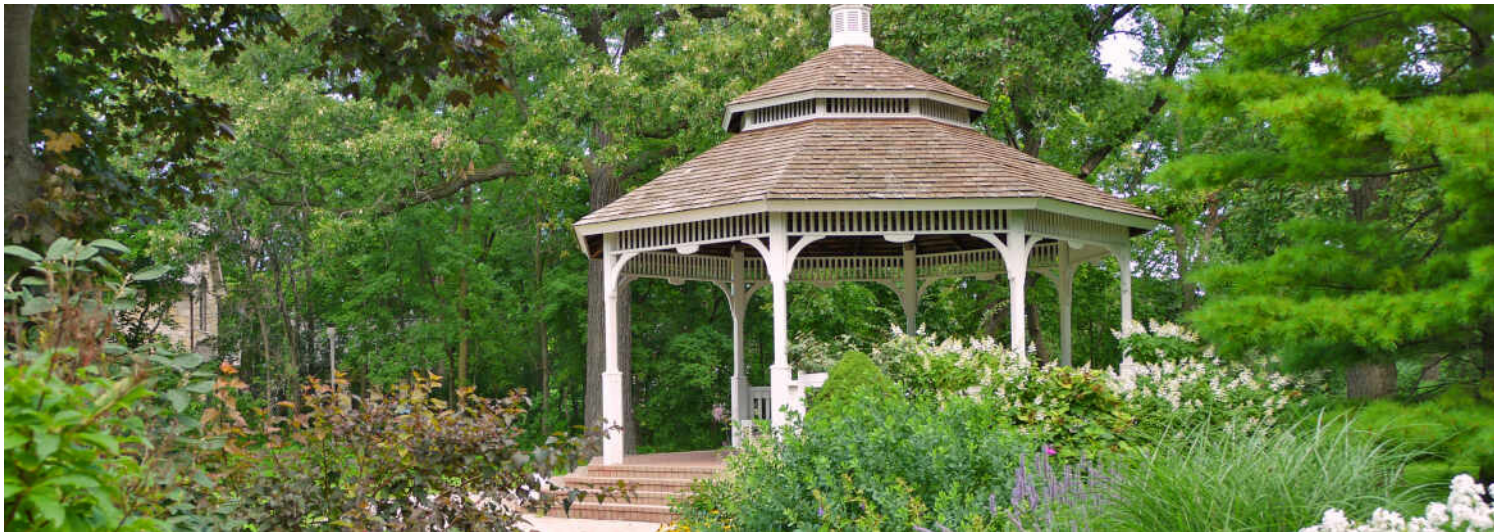


RECREATION





MUDROOM



HINSDALE’S HISTORIC DOWNTOWN AND BEAUTIFUL HOMES ATTRACT SOME OF THE STATE’S MOST AFFLUENT RESIDENTS, EARNING THE SUBURB ITS RANKING AS ONE OF THE WEALTHIEST ZIP CODES IN ILLINOIS.

Locals love the natural beauty and historic elegance of Hinsdale, which boasts a number of scenic parks and architectural landmarks.

Downtown Hinsdale offers a step back in time. The downtown district is on the National Register of Historic Places, with several historic buildings dating back to before the community was incorporated in the 1870s. Residents and visitors will also find award-winning restaurants that will satisfy any palate along with a variety of shops, from jewelry stores and upscale boutiques to craft shops and more.

The community has a wealth of amenities such as the Hinsdale Community Swimming Pool, Katherine Legge Memorial Park, and Burlington Park, which is home to various annual events including the farmers market, Fine Arts Festival, and Uniquely Thursdays concert series. There are also numerous parks and athletic facilities for those who enjoy sports like tennis, baseball, and soccer.

Hinsdale has easy access to the Tri-State Tollway, Stevenson Expressway, and three train stations along Metra’s BNSF Railway.

[illegible]

NEIGHBORHOOD GUIDE



RESTAURANTS

- Page's Restaurant
26 1/2 EAST HINSDALE AVENUE, 0.2 MI
- Fuller House
35 EAST 1ST STREET, 0.2 MI
- Il Poggiolo Ristorante
8 EAST 1ST STREET, 0.3 MI
- Vistro Prime
112 SOUTH WASHINGTON STREET,
0.3 MI
- Nabuki
18 EAST 1ST STREET, 0.3 MI
- Jade Dragon Restaurant
43 SOUTH WASHINGTON STREET, 0.3 MI
- Giuliano's Pizza
40 VILLAGE PLACE, 0.3 MI



COFFEE SHOPS

- Corner Bakery
42 EAST HINSDALE AVENUE, 0.2 MI
- Egg Harbor Cafe
29 EAST 1ST STREET, 0.2 MI
- Starbucks
33 SOUTH WASHINGTON STREET, 0.3 MI
- Toni Patisserie & Cafe
51 SOUTH WASHINGTON STREET, 0.3 MI
- Einstein Bros. Bagels
54 SOUTH WASHINGTON STREET, 0.3 MI
- Cafe La Fortuna
46 VILLAGE PLACE, 0.3 MI
- Casa Margarita
25 EAST HINSDALE AVENUE, 0.3 MI



SHOPPING

- FedEx Office Print & Ship Center
38 EAST 1ST STREET, 0.2 MI
- Sweet Ali's Gluten Free Bakery - Hinsdale
13 WEST 1ST STREET, 0.3 MI
- Stockholm Objects
39 SOUTH WASHINGTON STREET, 0.3 MI
- J.McLaughlin
53 SOUTH WASHINGTON STREET, 0.3 MI
- Bluemercury
21 EAST 1ST STREET, 0.3 MI
- Expression Gallery of Fine Art
10 EAST 1ST STREET, 0.3 MI
- My Sister Kate
48 SOUTH WASHINGTON STREET UNIT
1, 0.3 MI
- Fuller's Service Center
102 CHICAGO AVENUE, 0.4 MI



HEALTH CLUBS

- Hinsdale Fitness Club
35 EAST 1ST STREET, 0.2 MI
- PilatesByT
49 1/2 SOUTH WASHINGTON STREET,
0.3 MI
- Energie Pilates & Spa | Demi-Bar Pilates
18 WEST 1ST STREET, 0.4 MI



SCHOOLS

- Hinsdale Middle School
100 SOUTH GARFIELD ST, 0.3 MI



TRANSIT

- Hinsdale
METRA - BNSF RAILWAY, 0.3 MI

NO REPRESENTATIONS ARE MADE REGARDING THE ACCURACY OF THE INFORMATION PROVIDED.
ALL DATA IS SUBJECT TO CHANGE AND SHOULD BE VERIFIED WITH LOCAL SOURCES.

