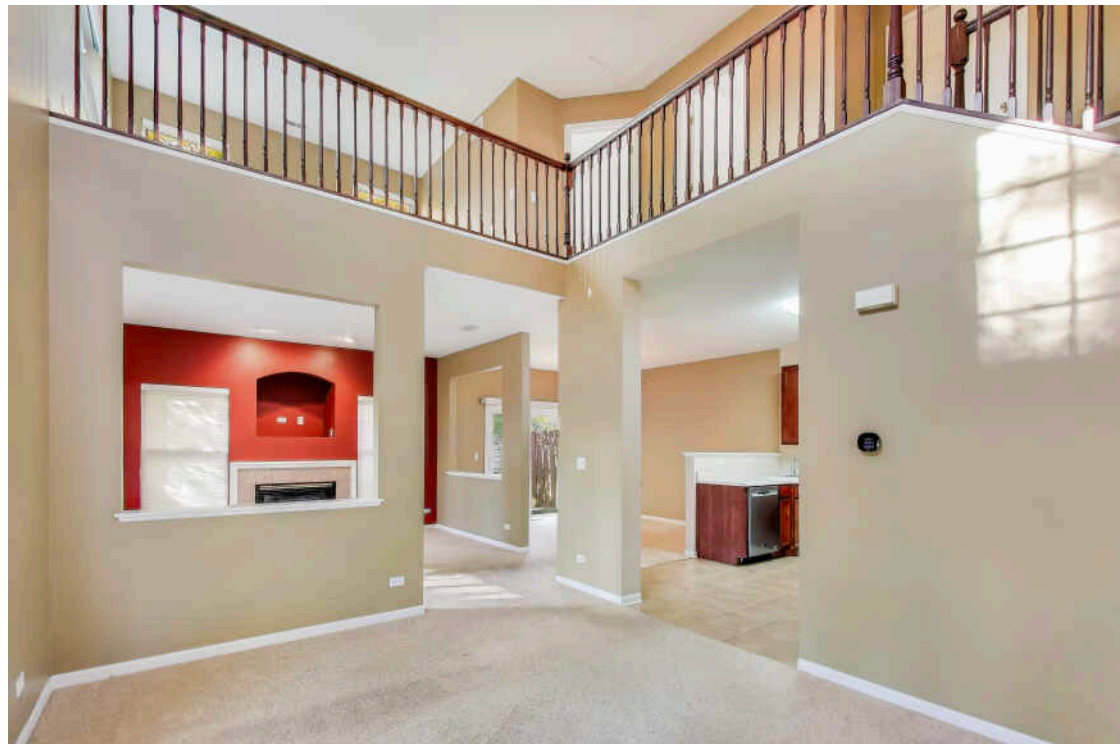


2271 STOUGHTON CIRCLE
AURORA

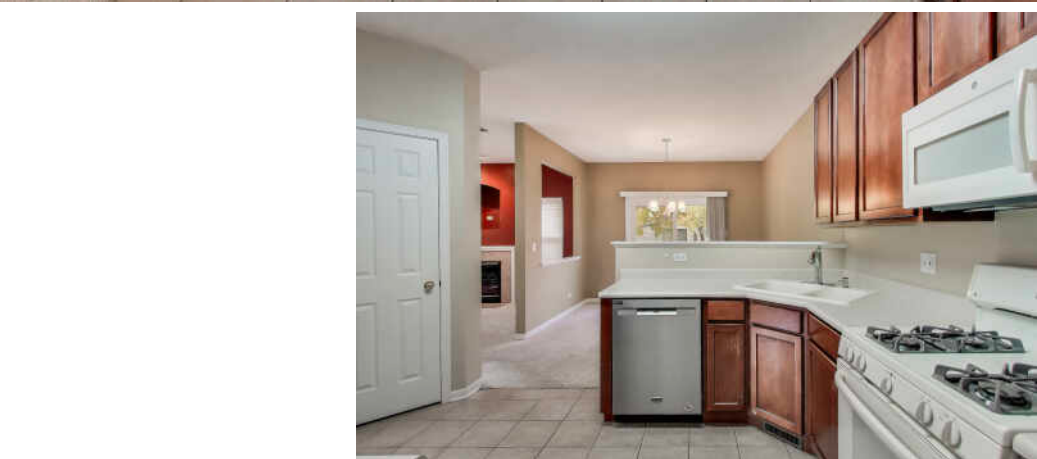


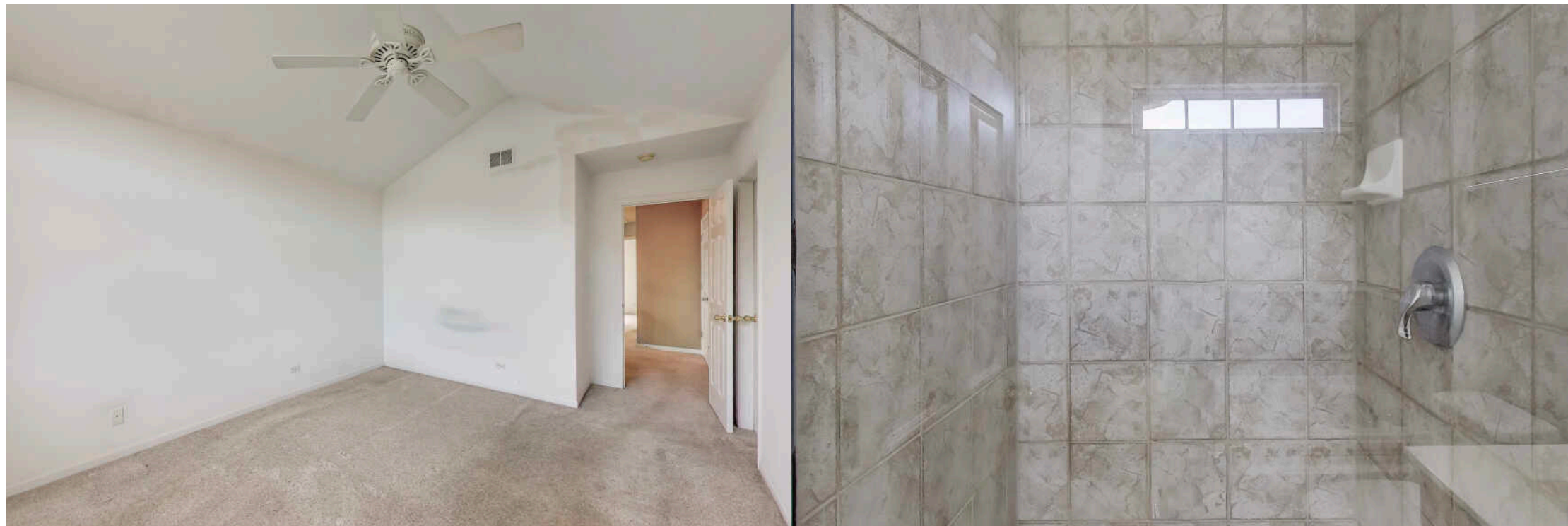


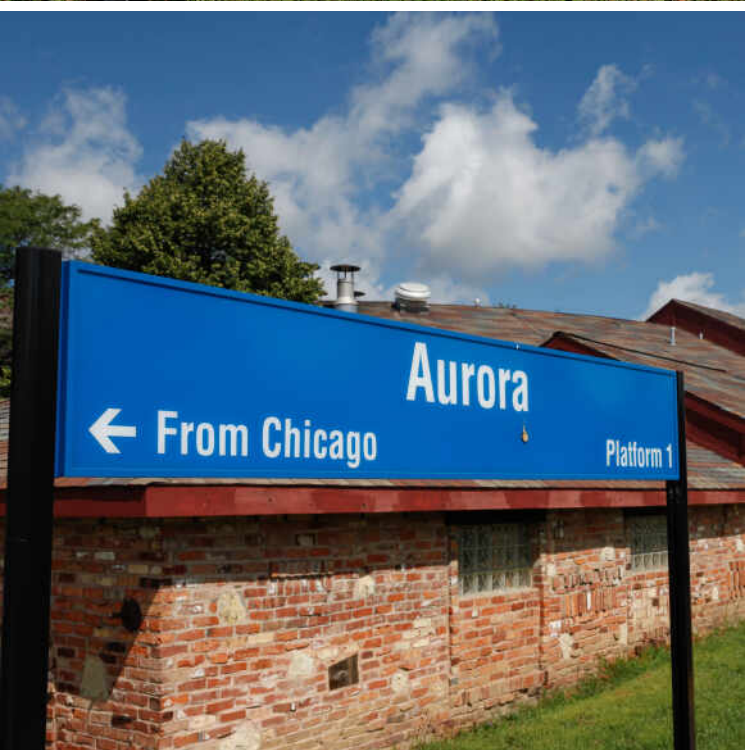
WELCOME HOME

Sun-Drenched Living in D204: End Unit Townhome with Loft! Don't miss this opportunity for private, spacious living in a Park Avenue end unit townhome within the top-rated Naperville School District 204. Ideally tucked away, this serene location is embraced by mature trees, offering a truly peaceful setting. Step inside and be greeted by soaring two-story ceilings and an open floor plan that fills the home with natural light. The well-appointed kitchen features ample cabinets and counter space, making meal prep a breeze. ~ The home offers 2 generous bedrooms and 2.1 baths, plus a massive, flexible loft/office space-ideal for working from home or creating a separate media room. Enjoy fresh updates, including freshly painted bedrooms and the primary bath. Practicality meets convenience with second-floor laundry and a 2-car attached garage.

2 BEDROOM
2.1 BATH







THE CITY OF **AURORA** IS ONE OF THE FASTEST GROWING COMMUNITIES IN THE COUNTRY.

Located along the Fox River, its historic downtown has a number of architectural landmarks including the Paramount Theatre, as well as several commercial buildings by George Grant Elmslie, a famed Prairie School architect. The city is also home to the Phillips Park Zoo, which offers free access to its visitors.

Aurora also has an impressive collection of structures by renowned architects such as Frank Lloyd Wright, Ludwig Mies van der Rohe, Bruce Goff, and Elmslie. The city also has a large collection of historic Sears Catalog Homes and Lustron all-steel homes.

Residents enjoy local city events including Downtown Alive, a festival with live music and food booths; Blues on the Fox with national blues artists; and the Aurora ArtWalk with food, art, live music, and theater.

Aurora has a long history as a regional transportation hub. It is the final stop on Metra's BNSF line. The city also has a stop at the Route 59 station, which borders Naperville.



NOTES

[illegible]



CRAIG DOHERTY

(630) 670-8334

CRAIGDOHERTY@ATPROPERTIES.COM



All specifications, features, designs, price, assessments, taxes and materials are subject to change without notice. Depicted floor plans and architectural renderings are only an artist's impression.

