

22915 MCGUIRE ROAD
WILMINGTON





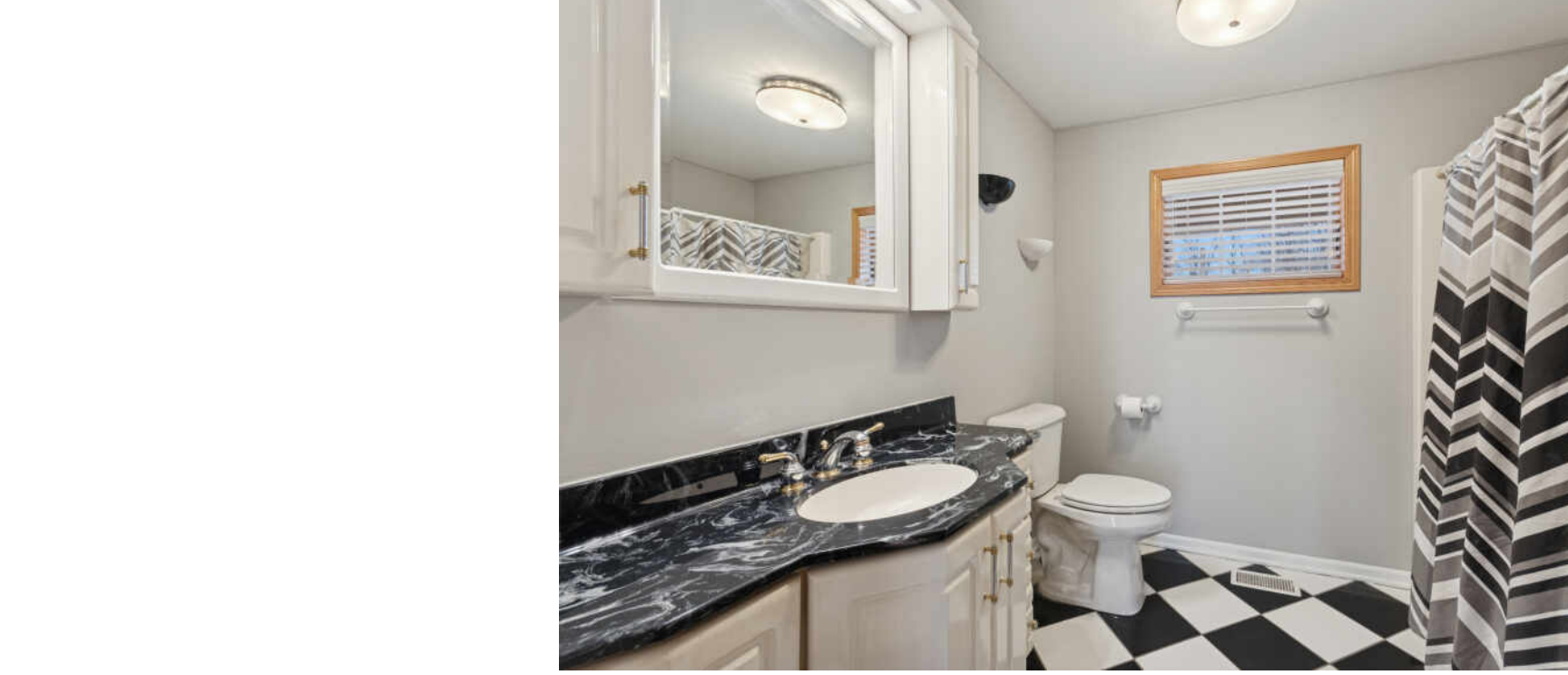
3 BEDROOM
3 BATH
TAXES: \$5,903

A HORSE lovers dream! A CAR LOVER'S workshop haven! A true country gem! 7 of the 10 acres are tillable! No details were overlooked when building this home. SOLID STEEL construction with 6 inch insulation, 18 inch footings with 4 ft concrete walls 8 inches thick. Entire property is equipped with radiant heat and 200 amp service. Attic holds 12 inches of insulation ****BUILDING FEATURES*-** 120x60 commercial grade building, one 10x10 & two 14x14 electric doors with openers, access16 ft steel lined ceilings with steel roof. Flooring is 6 inch concrete & commercial epoxy finish throughout. Spacious office includes a full bathroom and loft located above. Home and shop are seamlessly put together with a closed in breezeway. ***HOME FEATURES**-** Whole house fan and upgraded tray ceilings. Hardwood is a Brazilian walnut with maple inlay. 2 spacious bedrooms & 2 full bathrooms, gourmet kitchen with seamless custom hickory floor to ceiling cabinets, oversized island & granite countertops. ****OUTSIDE**** House portion boasts a wrap around porch with trex decking and gorgeous wrought iron fencing. 2 back up generators. Mature trees. The possibilities with this property are truly endless!

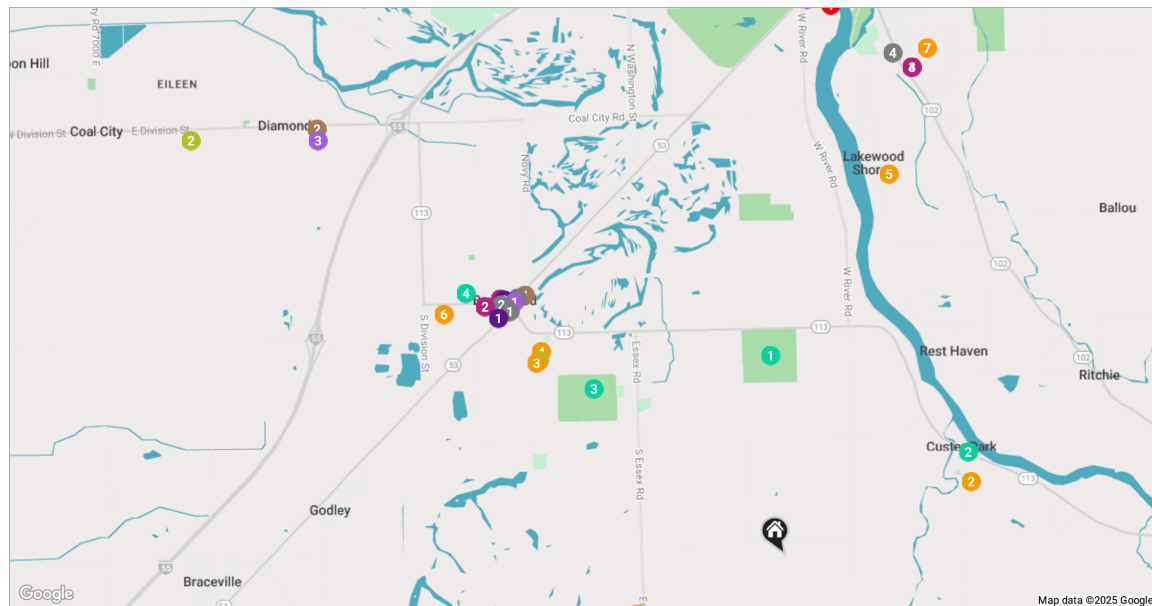












NOTES

[illegible]



LIZ PICCIOLI

(815) 715-7165

LIZPICCIOLI@ATPROPERTIES.COM



CHRISTIE'S
INTERNATIONAL REAL ESTATE

All specifications, features, designs, price, assessments, taxes and materials are subject to change without notice. Depicted floor plans and architectural renderings are only an artist's impression.

