

229 APPLEY AVENUE

LIBERTYVILLE





ROOM DIMENSIONS

LIVING ROOM : 16' x 15'

KITCHEN : 9' x 10'

PRIMARY BEDROOM : 16' x 14'

SECOND BEDROOM : 12' x 10'

THIRD BEDROOM : 12' x 10'

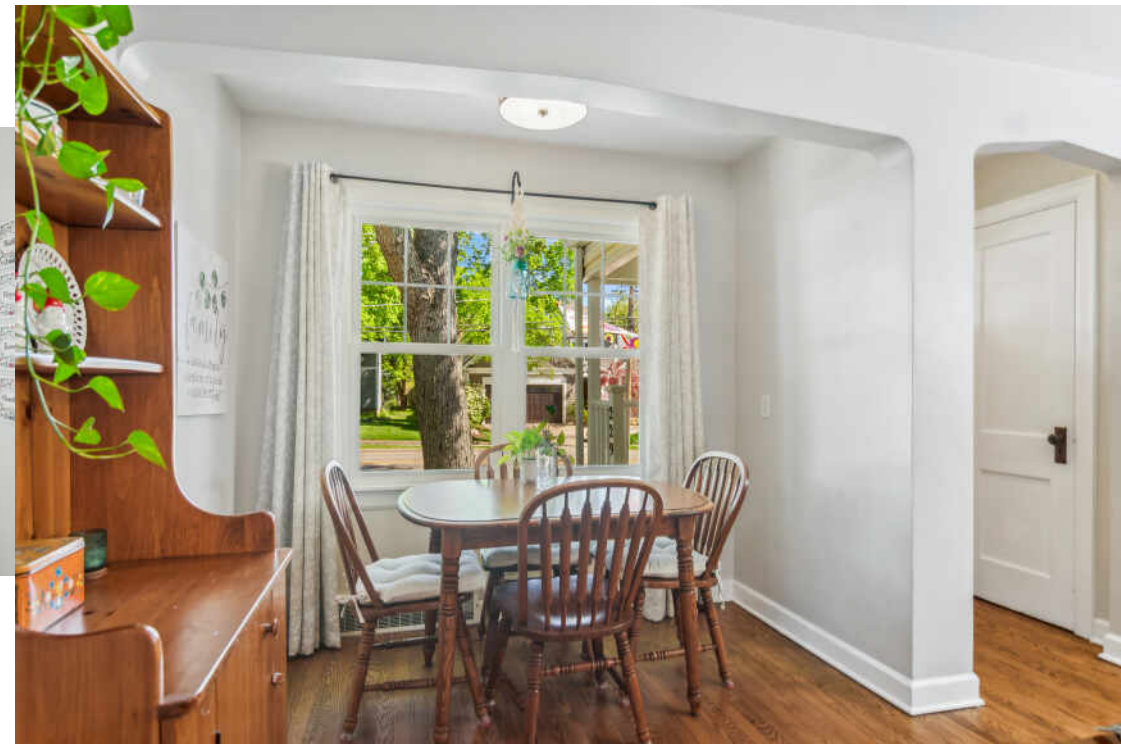
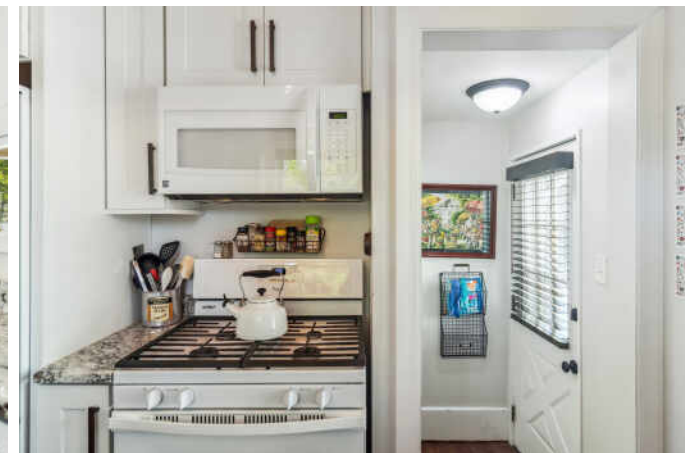
WHAT A LOCATION!!! Come and see this move in ready Charming cape cod within walking distance of downtown and the Metra train station. Enjoy the inviting living room with hardwood floors and shared dining area. NEWER Galley kitchen with newer appliances, granite counter tops and 42 inch cabinetry. Two first floor bedrooms, one could be an office as it has a door. Walk upstairs to the Primary suite with sitting area, remodeled full bath with large oversized shower and a walk in closet add to this delightful home. Basement offers loads of storage, and a 2 car barn garage with a ladder up to Storage. Newer Composite roof, newer windows, newer plumbing!! Lots of updates! Come and enjoy everything Libertyville has to offer. WELCOME HOME!!!!

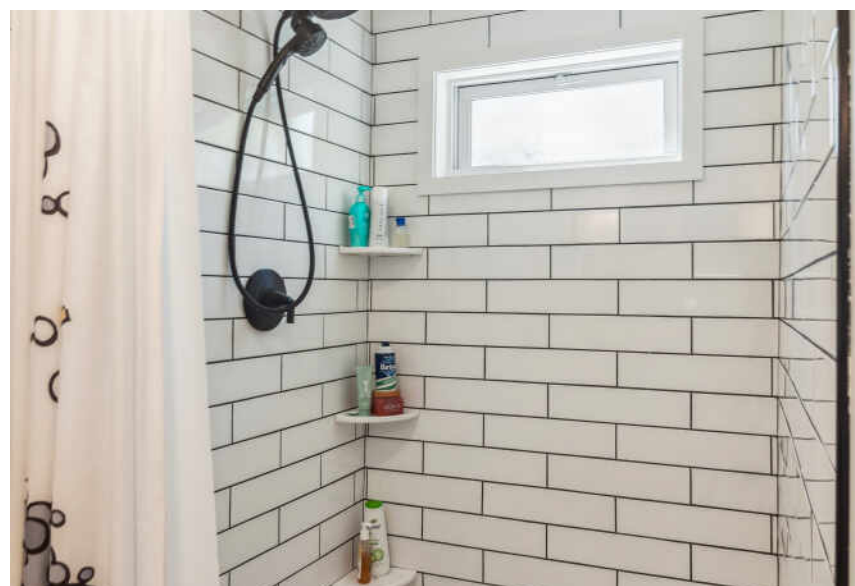


3 BEDROOM

2 BATH

TAXES: \$6,544







LIBERTYVILLE OWES MUCH OF ITS EARLY GROWTH TO THE RAILROAD.

A spur on the Milwaukee Road train line brought rapid growth to the area, which was incorporated in 1882.

Today the Metra rail system provides a convenient commute for residents of this vibrant community.

Libertyville's bustling downtown district received a Great American Main Street Award by the National Trust for Historic Preservation. The downtown was rebuilt after a fire in 1895 destroyed most of the buildings; they were rebuilt with mandated brick reconstruction, giving them a singular style.

The downtown area includes bakeries, gourmet coffee vendors, and a microbrewery. In spring and summer months, residents enjoy a farmers market that has been operating for more than three decades.

In addition to a variety of restaurants, there are upscale boutiques, antique shops, and gift stores along Milwaukee Avenue.

Residents have eight miles of bike paths and numerous parks to enjoy along with the annual Libertyville Days Festival, an outdoor concert series, and other community events.

Three Metra stations and the Tri-State Tollway make for a convenient commute to downtown Chicago, O'Hare International Airport, and suburban corporate headquarters.



NOTES _____



JULIE BROWN

(847) 975-2957

JULIEBROWN@ATPROPERTIES.COM

WWW.JULIEBROWNHOMES.COM



DENISE NABAT

847.414.4567

847-367-0500

DENISENABAT@ATPROPERTIES.COM

Denise Nabat
A HOUSE + ❤️ = HOME



CHRISTIE'S
INTERNATIONAL REAL ESTATE