

229 BALLANTRAE STREET
ABERDEEN ~ VALPARAISO





ROOM DIMENSIONS

LIVING ROOM : 20.0' × 17.0'

KITCHEN : 16.0' × 11.0'

DINING ROOM : 13' × 12'

FOUR SEASONS ROOM : 16.5' × 13.5'

PRIMARY BEDROOM : 17.0' × 13.0'

SECOND BEDROOM : 13.0' × 10.6'

THIRD BEDROOM : 18.0' × 11.0'

3 BEDROOM

2.1 BATH

TAXES: \$2,152

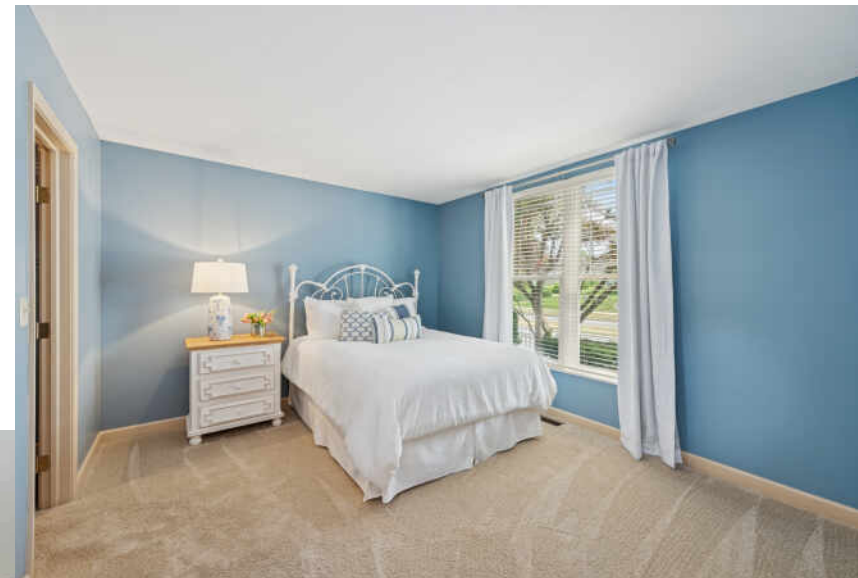
ASSESSMENTS: \$190 / MONTH

MAIN FLOOR LIVING AT ITS FINEST!

This cottage style home in Aberdeen must be seen to be appreciated! It offers main floor living at its finest! The spacious kitchen boasts quartz countertops, tiled backsplash and a commercial grade stove which makes cooking a delight! The corner sink faces windows overlooking flowering window boxes. The large (51" X 51") island provides great workspace and the perfect spot to set up buffet for gatherings. The living room features tray ceilings, transom windows and gas fireplace with custom built-ins on both sides and opens seamlessly to the bright 4 seasons with sliders to your own private oasis, perfect for enjoying your morning coffee or an evening drink. The brick patio is surrounded by beautiful landscaping, complete with an irrigation system. The Blackstone Natural Gas Grill makes grilling a breeze! You'll find the fountain offers a relaxing sound any time of day. The primary bedroom includes his and her walk-in closets and an ensuite bath with whirlpool tub, walk-shower and double sinks. A second bedroom with walk-in closet, powder room, and laundry room complete the main level. The bonus space above the garage includes a third bedroom, full bath and extra storage. Temperature in the upper area is controlled by a separate zone system for heating and cooling. Your guests will love it! Add to all of this, Aberdeen's amenities including pool, tennis courts, pickle ball courts, summer concerts, restaurants & sidewalks for walking! Aberdeen Golf Course minutes away!









NOTES

[illegible]



SUSIE JASKOWIAK

(219) 508-6690

SUSIEJASKOWIAK@ATPROPERTIES.COM

SUSIEJASKOWIAK.COM



All specifications, features, designs, price, assessments, taxes and materials are subject to change without notice. Depicted floor plans and architectural renderings are only an artist's impression.

