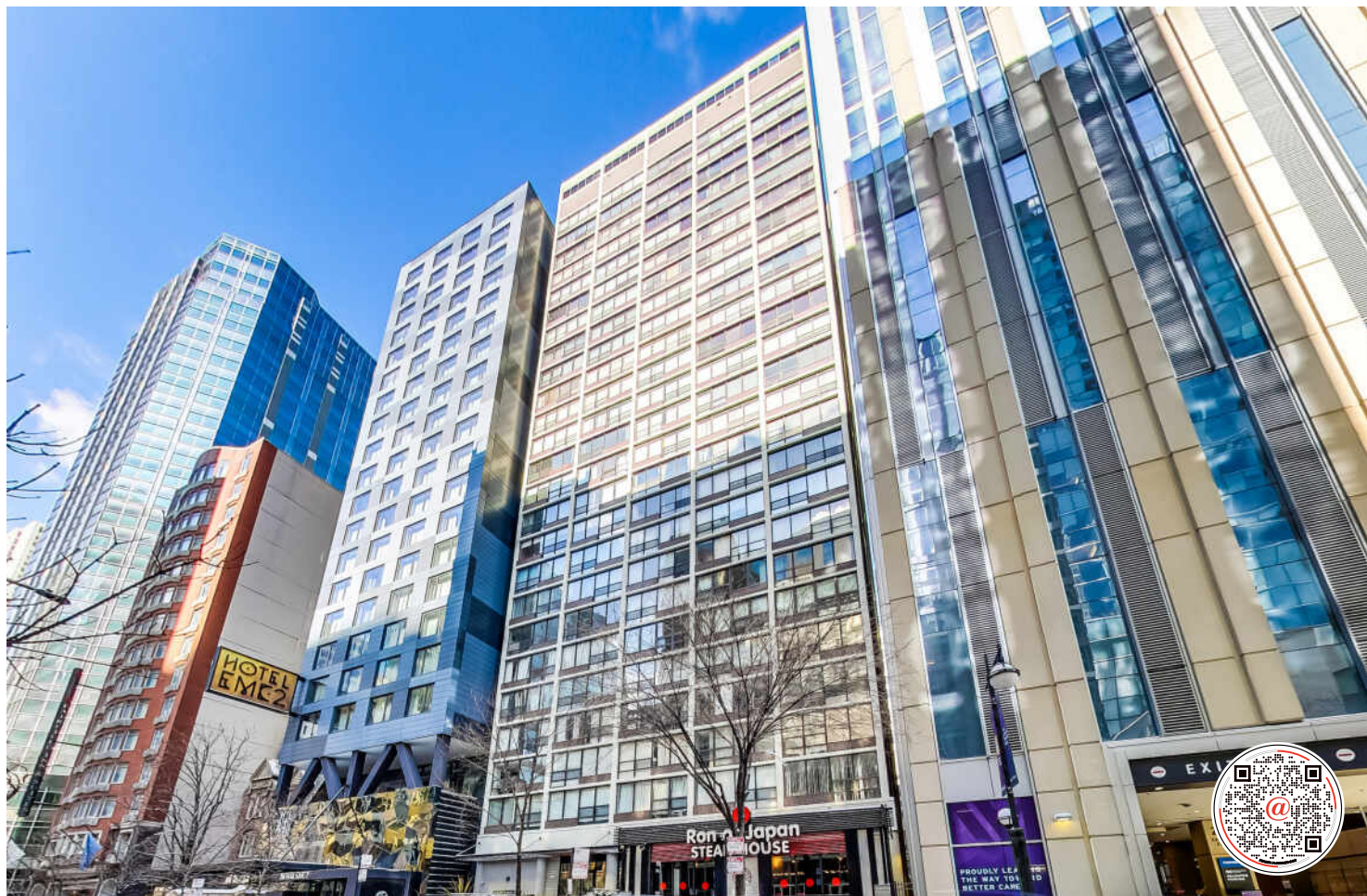
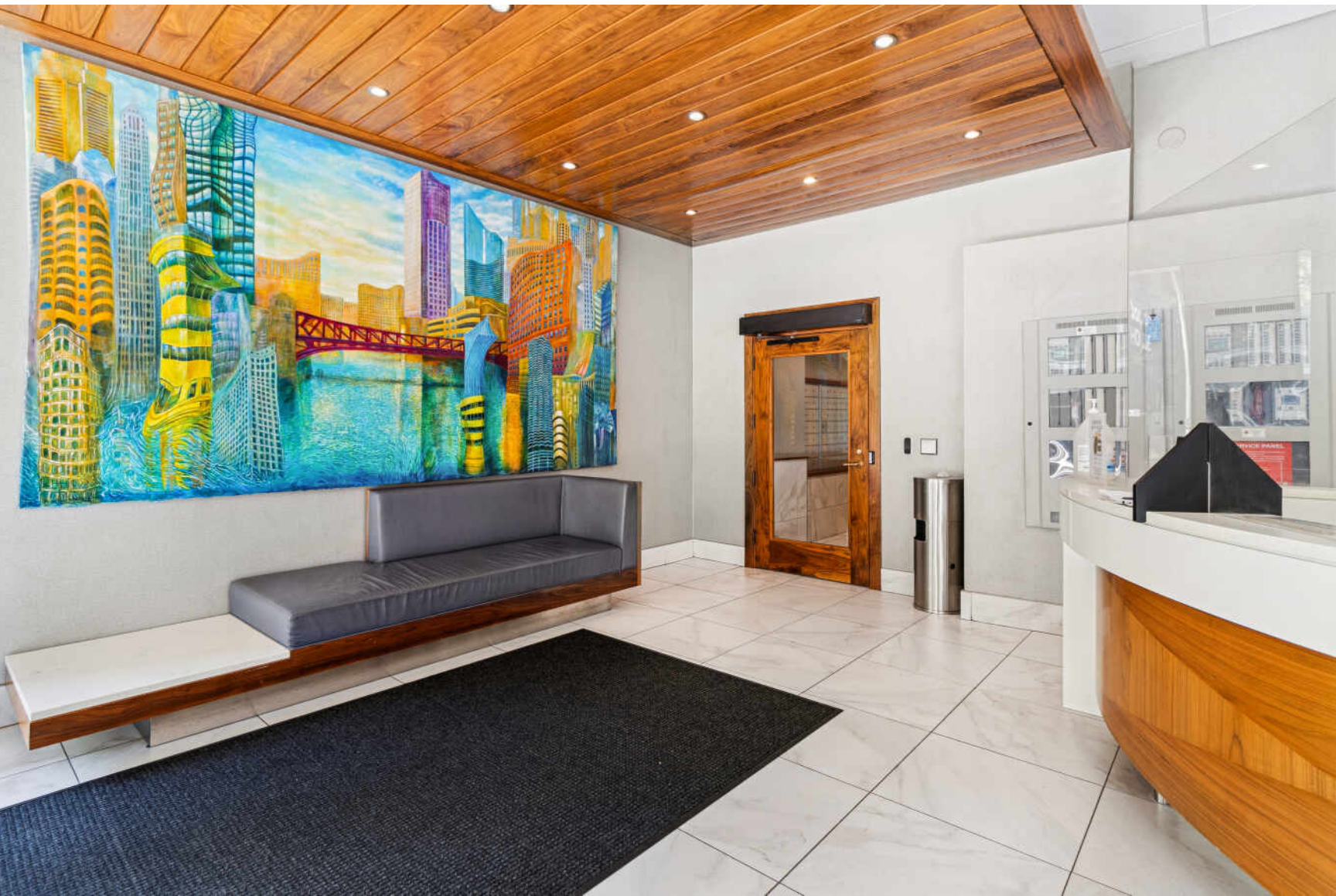


230 E ONTARIO STREET #2305
STREETERVILLE

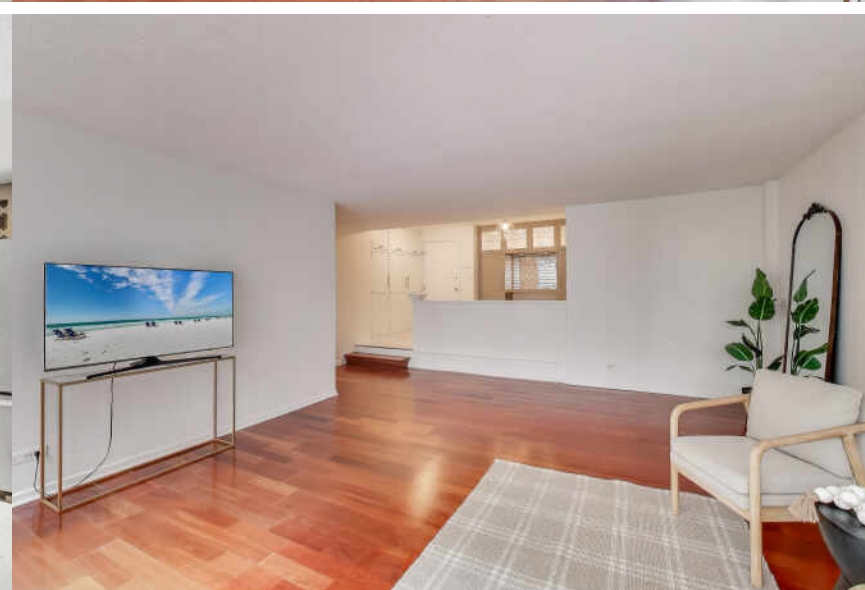
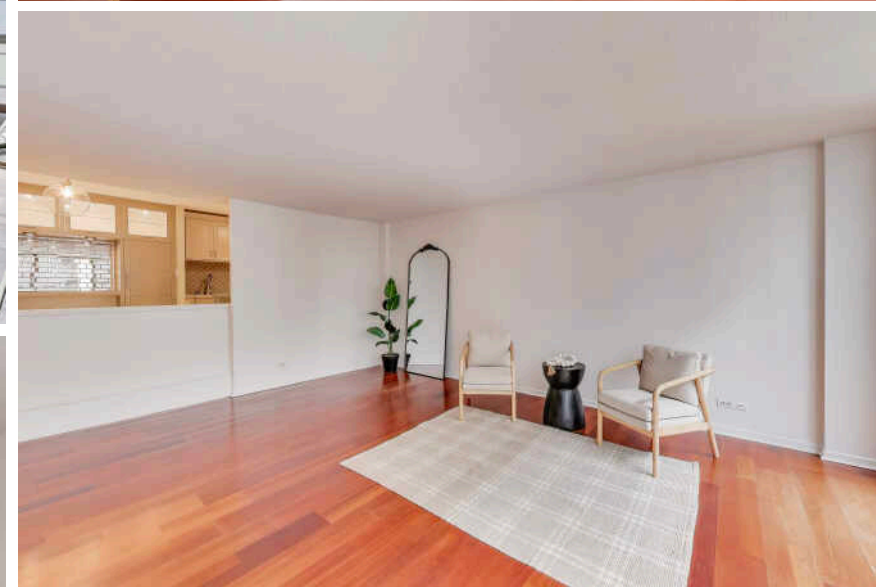
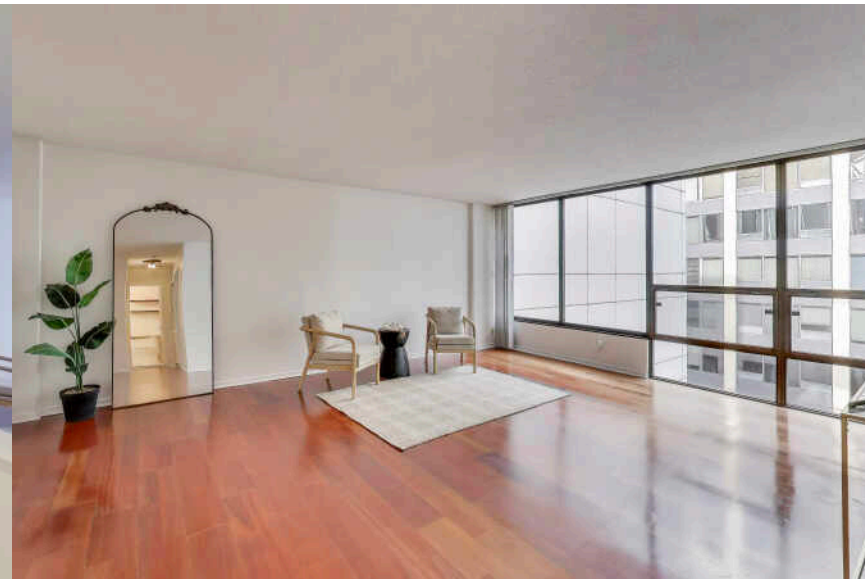
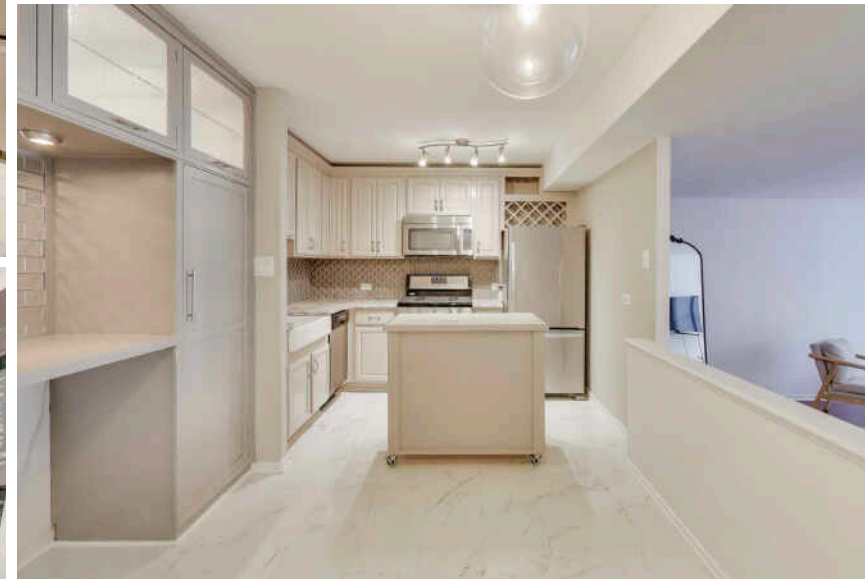
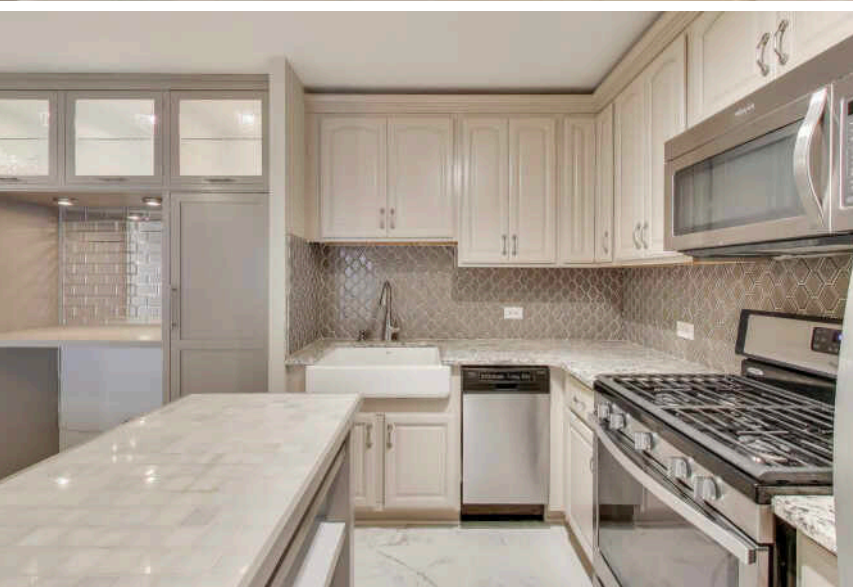


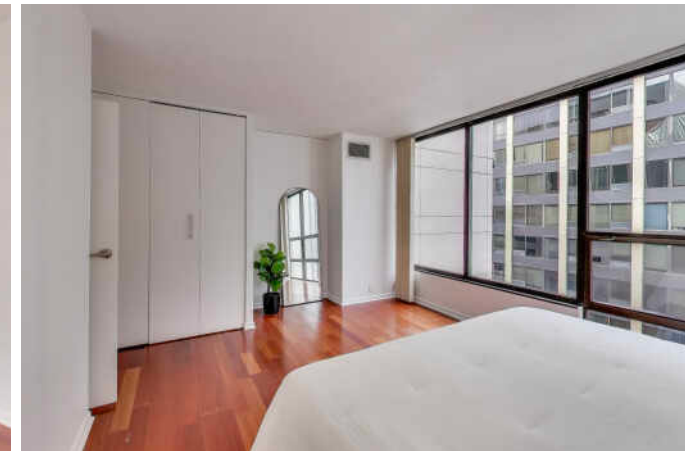
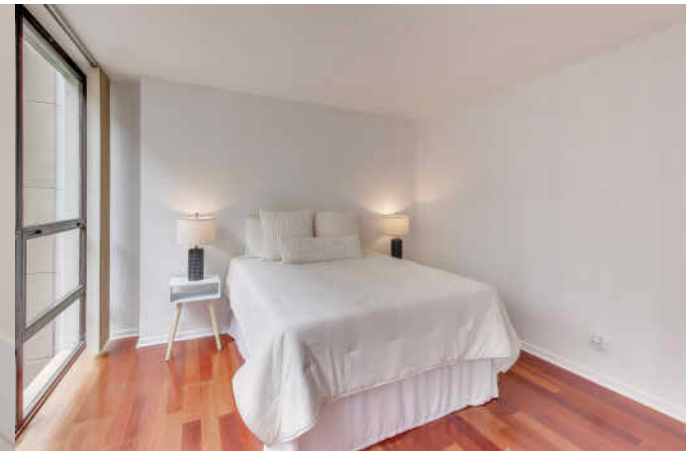
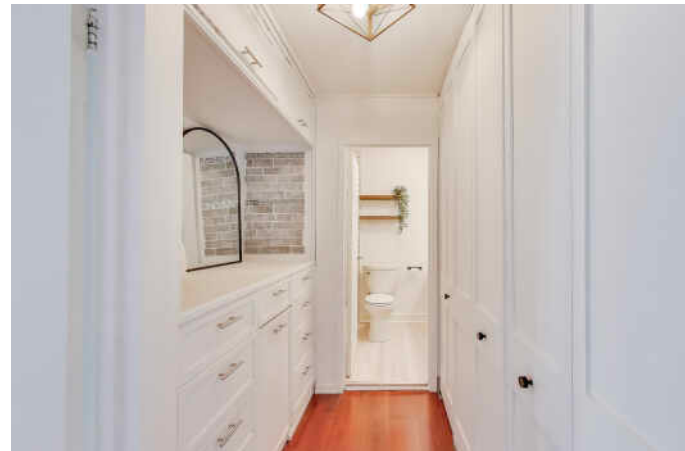


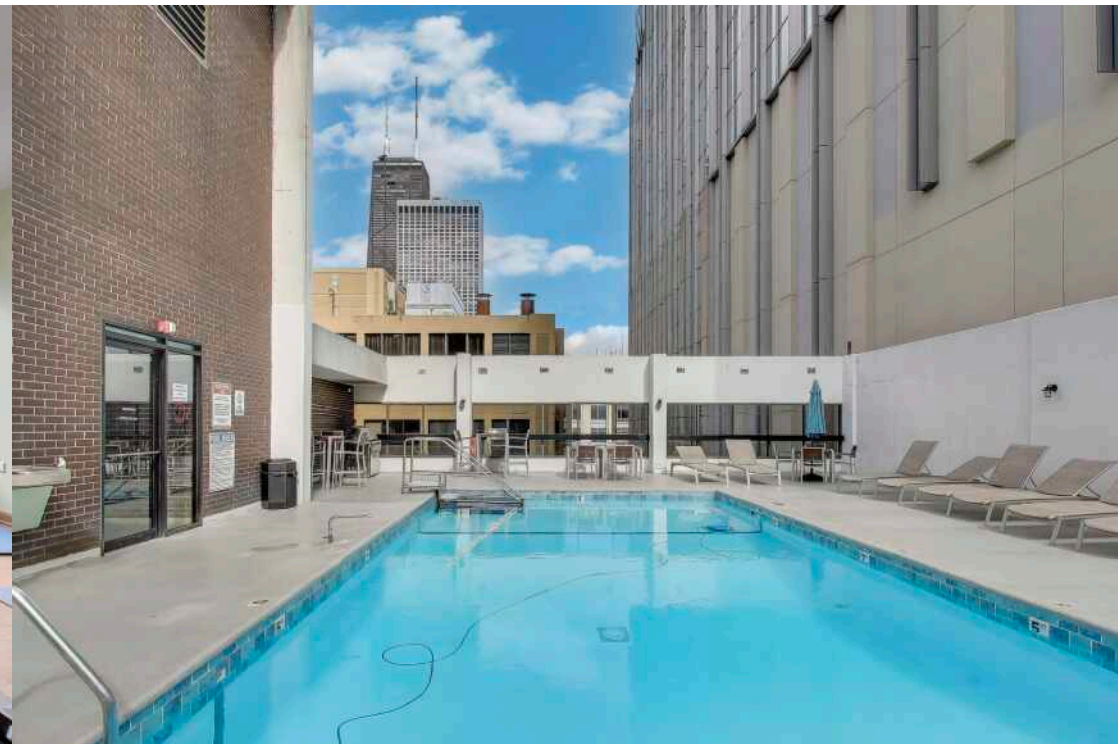
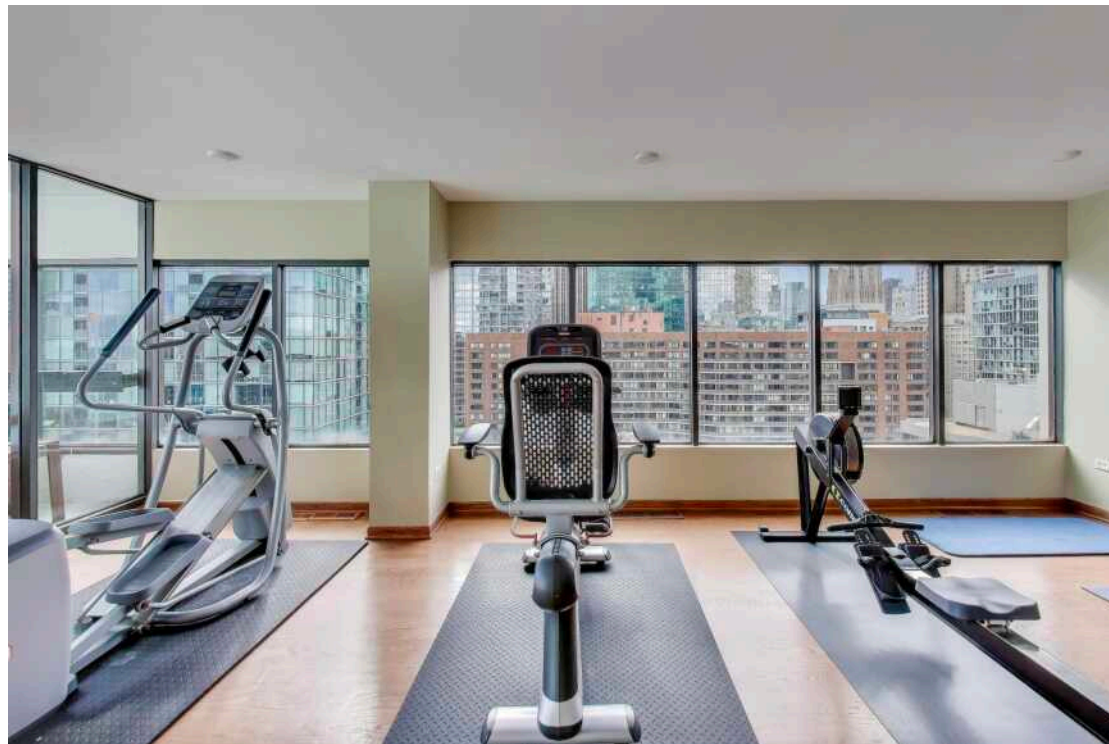
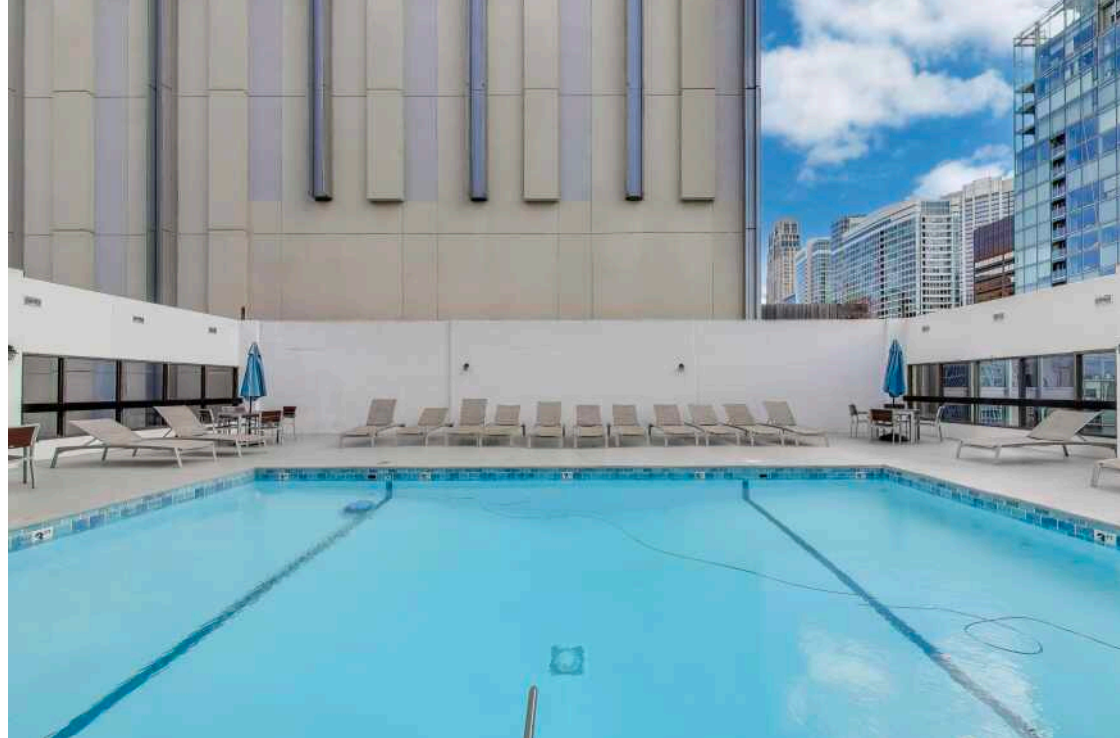
1 BEDROOM
1 BATH
TAXES: \$4,316.61
ASSESSMENTS: \$817

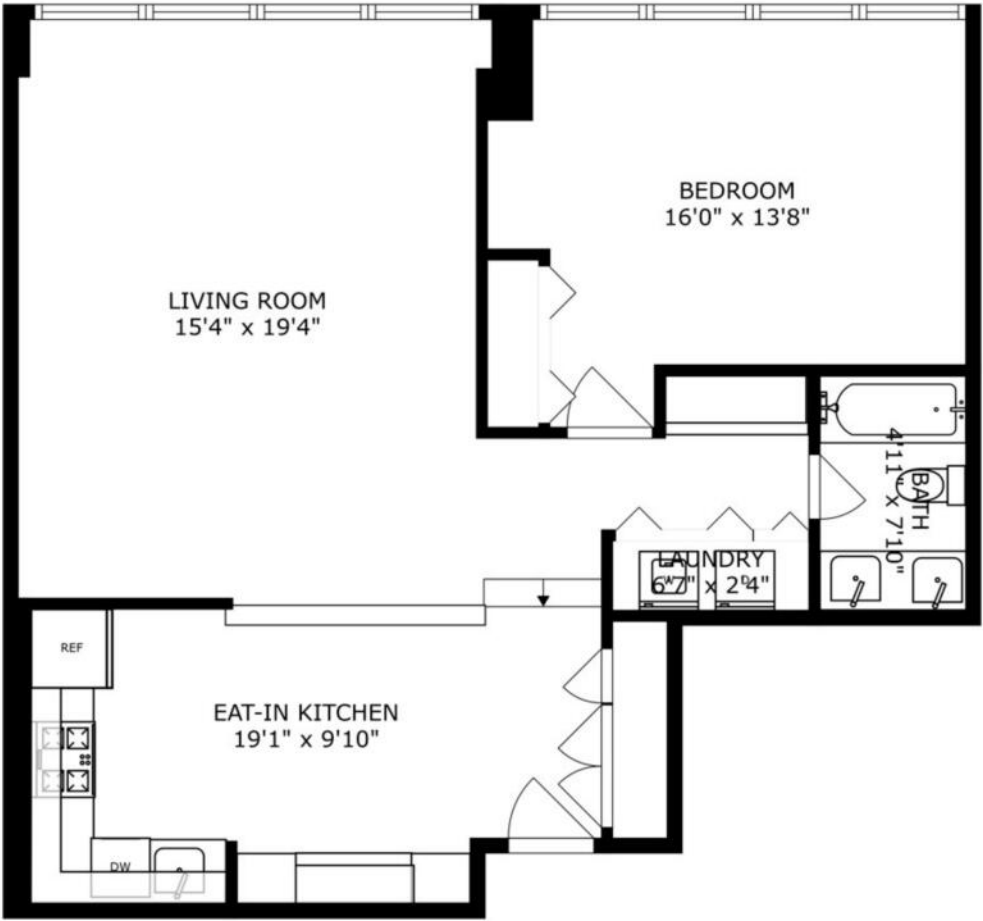
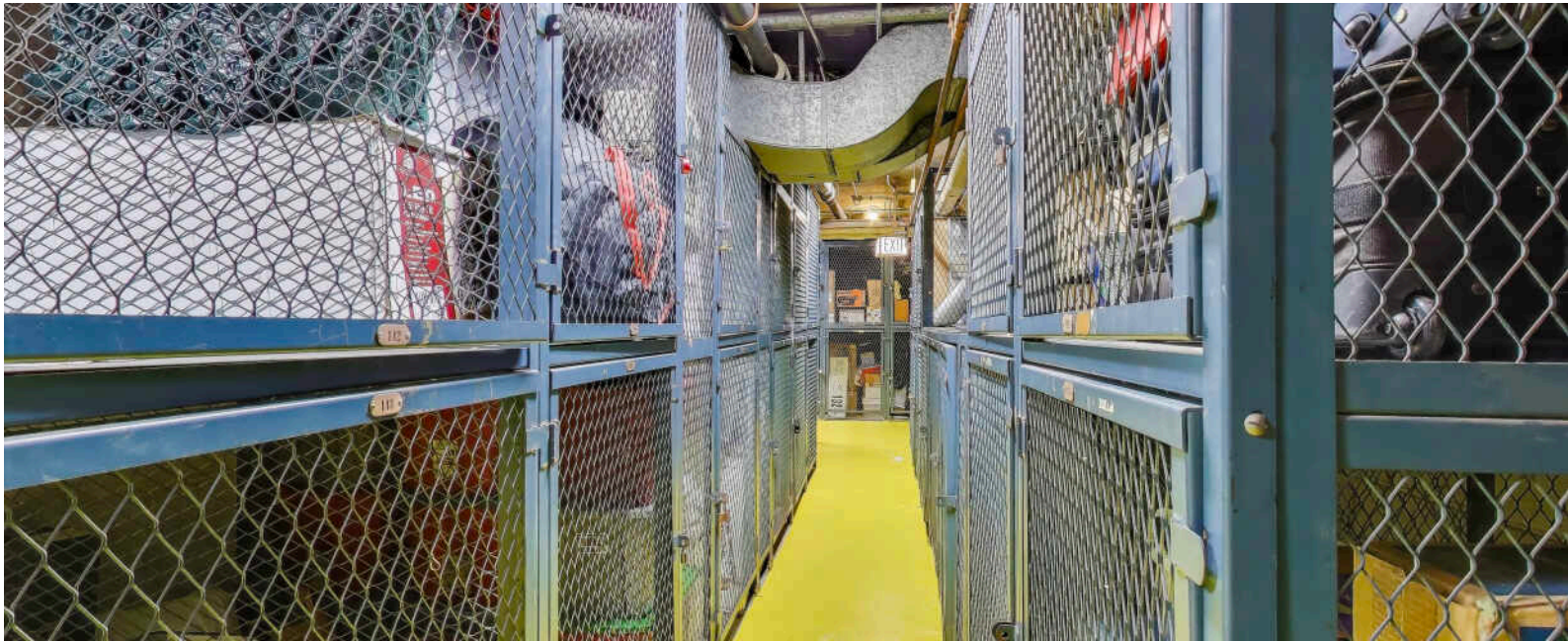
Steps from Northwestern Hospital, premier dining, shopping, the Lakefront, and Michigan Avenue. This spacious and beautifully updated 1-bedroom condo in the heart of Streeterville includes:

- in-unit washer and dryer
- an open-concept kitchen with ample cabinetry, a farmhouse sink, 5-burner stove, portable island, and space for a full dining table
- An oversized living room with floor-to-ceiling windows that flood the space with natural light
- A recently renovated bathroom with a double-sink vanity, subway tile tub/shower, and updated flooring and lighting
- Additional highlights include generous closet space throughout, built-in storage, and a spacious bedroom
- Full-amenity building with 24-hour door staff, rooftop pool, fitness center, and storage locker
- Parking options available in building and nearby









SIZES AND DIMENSIONS ARE APPROXIMATE, ACTUAL MAY VARY.



MAJOR DEVELOPMENT IN RECENT YEARS HAS PUT **STREETERVILLE** ON THE MAP.

In the past two decades alone, dozens of new buildings, high-rises, hotels, stores, and institutions have sprung up, bringing with them a flock of residents to the high-energy community.

A wide range of housing is available, the majority in high-rise buildings. The neighborhood's stunning array of architecture includes pre-war buildings, a collection of Mies van der Rohe buildings, and iconic buildings like 875 North Michigan Avenue (known as the John Hancock Center). New construction and smaller mid-rise buildings can be found throughout the neighborhood as well.

Streeterville is home to notable attractions such as The Magnificent Mile, Water Tower Place, and the Museum of Contemporary Art. It is also home to Northwestern Memorial Hospital's state-of-the-art medical campus and the downtown campuses of Northwestern University and the University of Chicago.

While the neighborhood offers a number of smaller "pocket" parks and playgrounds, the lakefront is the center of attention, and it's never more than a couple of blocks away. While dining out is easy, deciding where to go with so many great restaurant options is not.

Residents have easy access to surrounding areas via the CTA's Red Line and numerous buses that run up and down Michigan Avenue.



WENDY ANDRADE, PHARM.D

C: (312) 429-0314

WENDYA@ATPROPERTIES.COM

IG: @THE_WENDYCITY



All specifications, features, designs, price, assessments, taxes and materials are subject to change without notice. Depicted floor plans and architectural renderings are only an artist's impression.

