

**2315 S GOEBBERT ROAD**  
ARLINGTON HEIGHTS





#### ROOM DIMENSIONS

LIVING ROOM : 22' x 15'

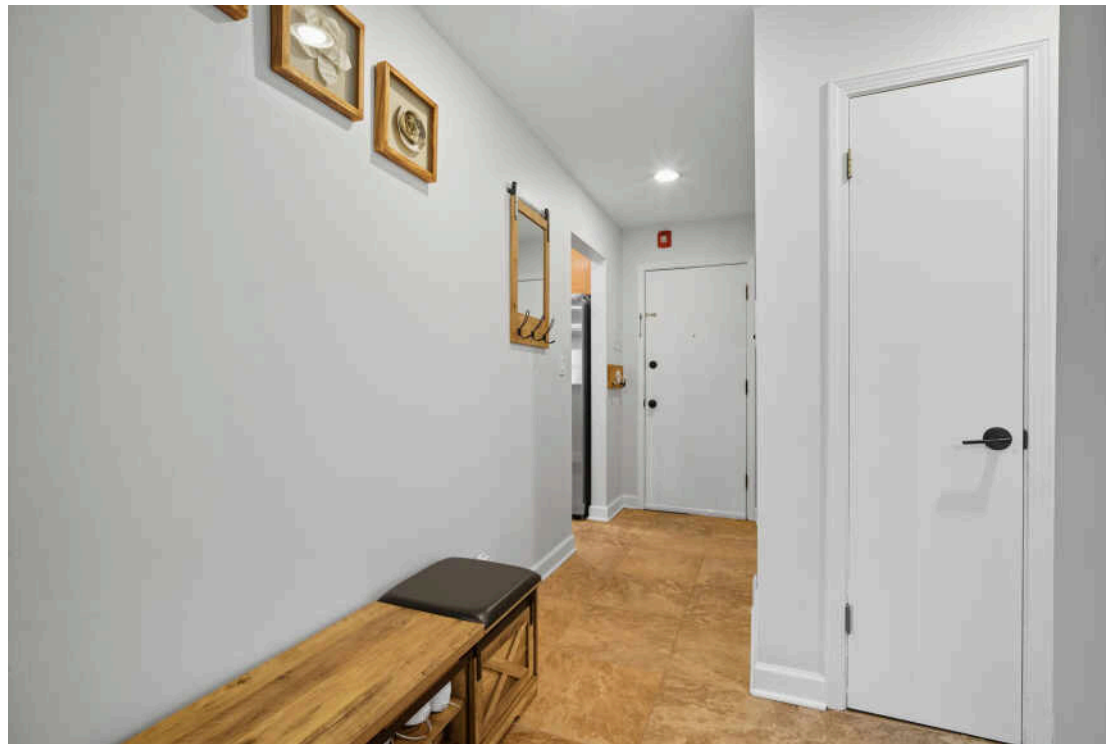
DINING ROOM : 21' x 15'

KITCHEN : 13' x 9'

PRIMARY BEDROOM : 16' x 11'

SECOND BEDROOM : 11' x 11'

Enjoy resort-style living in Brittany Place with this beautifully updated end unit, just steps from the sparkling pool. One of the largest homes in the community, it features a private patio that opens to a serene courtyard with two ponds and a charming gazebo - perfect for a quiet morning coffee or evening relaxation. 2 large bedrooms and 2 updated full baths - including a private, ensuite retreat. Inside, the remodeled eat-in kitchen with stainless steel appliances, hardwood cabinets, granite countertops, and ceramic tile flooring makes cooking a joy. (new Samsung refrigerator 2025) The dining room/den offers flexible living space, whether you're hosting friends or creating a cozy retreat. You'll also love the remodeled in-unit laundry room with modern washer and dryer (LG brand)- a rare convenience! Heat, water, pool access, and more are all included in the association, giving you a low-maintenance lifestyle. With I-90, Woodfield Mall, shopping, and dining just minutes away, comfort and convenience are right at your doorstep. Come home to everyday ease and elegance at Brittany Place!



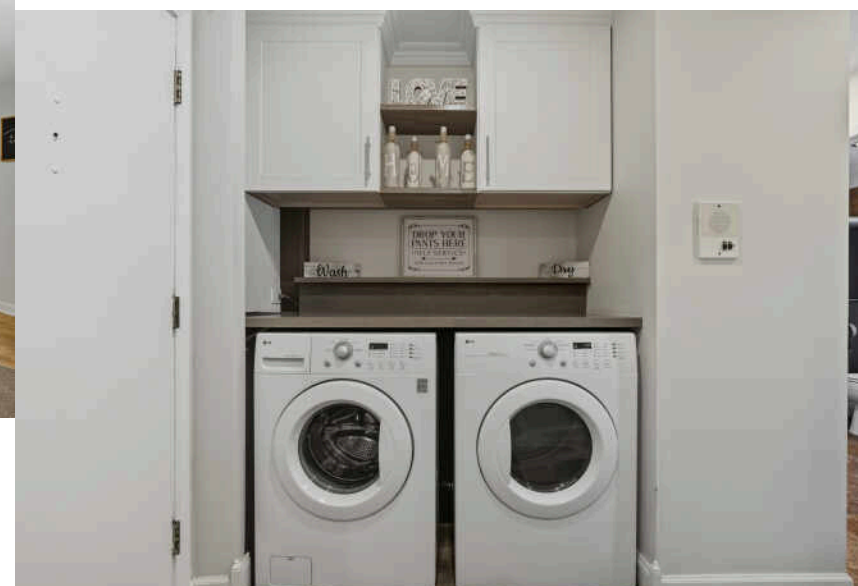
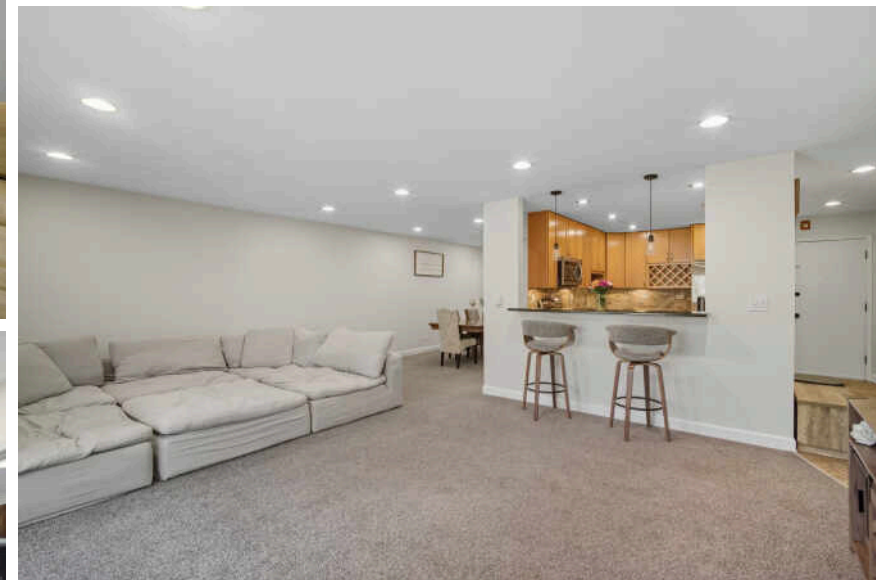
2 BEDROOM

2 BATH

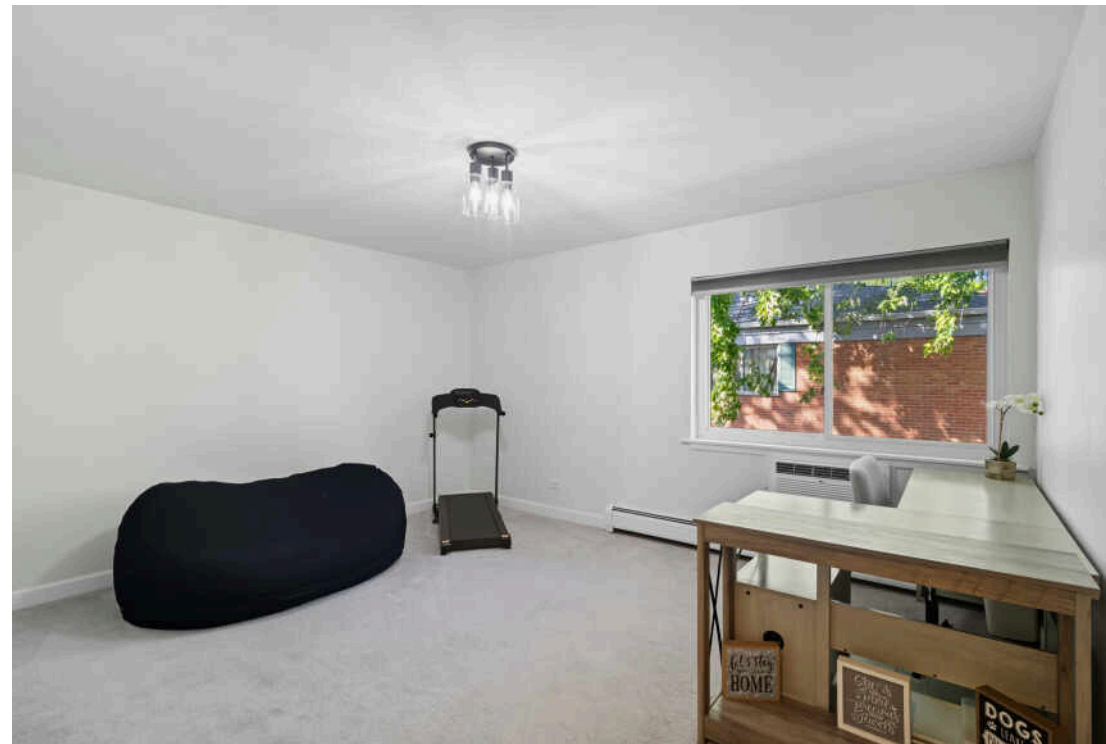
TAXES: 3159

ASSESSMENTS: 508













## WITH ALL THE AMENITIES YOU WOULD EXPECT TO FIND IN LARGER URBAN SETTINGS, **ARLINGTON HEIGHTS** GIVES MOST CITIES A RUN FOR THEIR MONEY

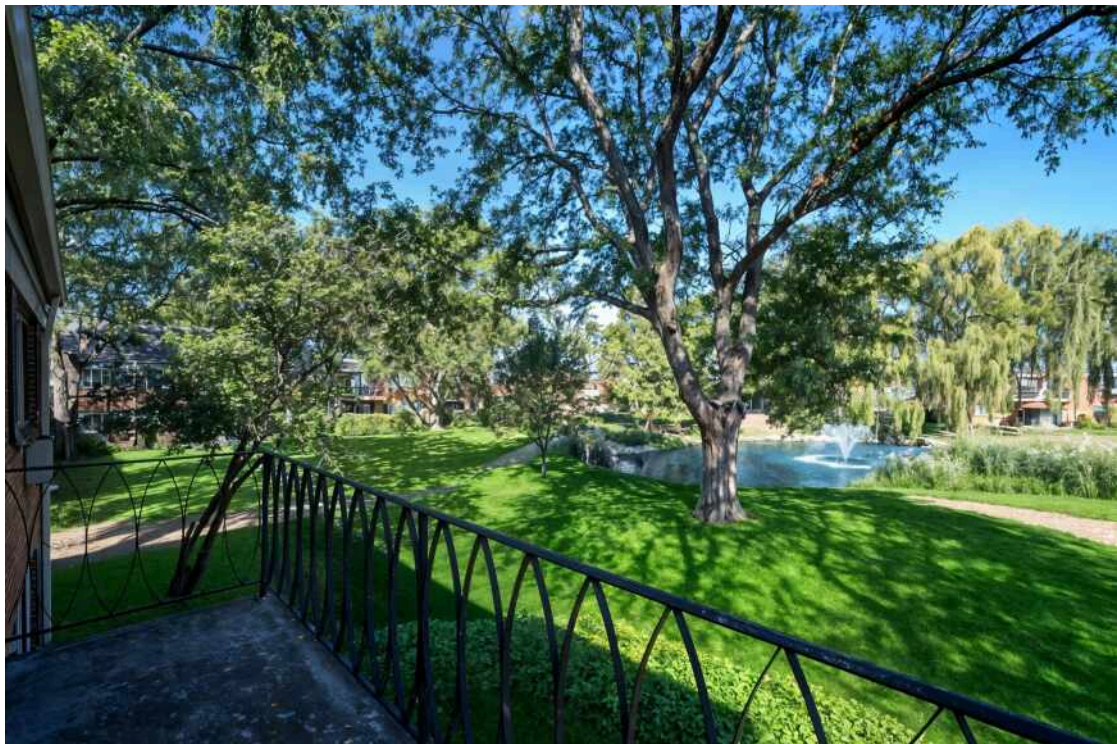
Located 25 miles northwest of Chicago, the community has a vibrant downtown area, theaters, restaurants, shopping, parks, recreation, and two commuter train stations. It's no wonder Arlington Heights tops the list of the highest-populated villages in the country.

Arlington Heights is home to more than 200 restaurants, many situated in its downtown area and offering something for every taste.

The village hosts outdoor festivals, parades, and its ever-popular Frontier Days. Residents have plenty of bike paths, picnic areas, golf courses, lakefront paths, and more to enjoy.

Commuting downtown is a convenient 30-minute trip with two Metra stations offering direct access to Chicago's Ogilvie Station. The village also has direct access to I-90 as well as Route 53, which links to several interstates.





NOTES \_\_\_\_\_

\_\_\_\_\_

\_\_\_\_\_

\_\_\_\_\_

\_\_\_\_\_

\_\_\_\_\_

\_\_\_\_\_

\_\_\_\_\_

\_\_\_\_\_

\_\_\_\_\_

\_\_\_\_\_

\_\_\_\_\_



## KAITLYN KRIEGER

(224)622-0314

DK@THEPLANKGROUP.COM

KAITLYNKRIEGER@ATPROPERTIES.COM

