

2321 S 60TH COURT
CICERO





ROOM DIMENSIONS

LIVING ROOM : 13' x 14'

FAMILY ROOM : 29' x 12'

DINING ROOM : 13' x 13'

KITCHEN : 13' x 14'

BREAKFAST ROOM : 12' x 7'

PRIMARY BEDROOM : 24' x 9'

SECOND BEDROOM : 9' x 12'

THIRD BEDROOM : 22' x 14'

FOURTH BEDROOM : 30' x 13'

LAUNDRY ROOM : 11' x 9'

UTILITY ROOM : 11' x 9'

THREE LEVELS OF LIVING SPACE PLUS A CHARMING BACKYARD RETREAT!

This spacious home offers 5 bedrooms and 2 full baths, with a fully finished basement featuring exterior access. Every detail has been considered to create a residence that blends timeless comfort with modern functionality, making it truly move-in ready for its next owner. Over the past 12 years, the home has been thoughtfully and lovingly updated with:

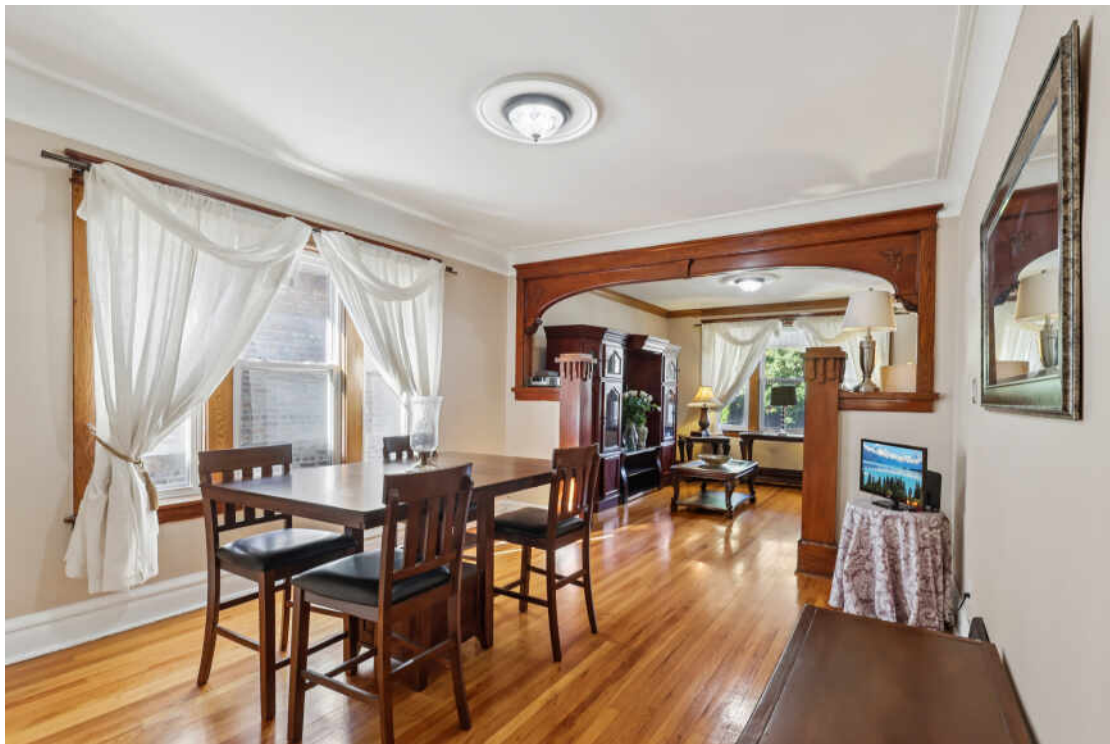
- New roof
- New electrical system
- New HVAC
- New windows
- Beautiful front door
- Totally redesigned kitchen
- Updated baths
- New garage
- New tuckpointing
- Location Highlights: * Within 1 mile of Cermak Road's fantastic shopping strip, *Within 1 mile of both elementary and high schools, * Just 1 mile to the CTA Pink Line, *Immediate access to I-290 at Austin.
- Come visit and see for yourself-this is an exceptional value and an opportunity not to miss!
- Call today.

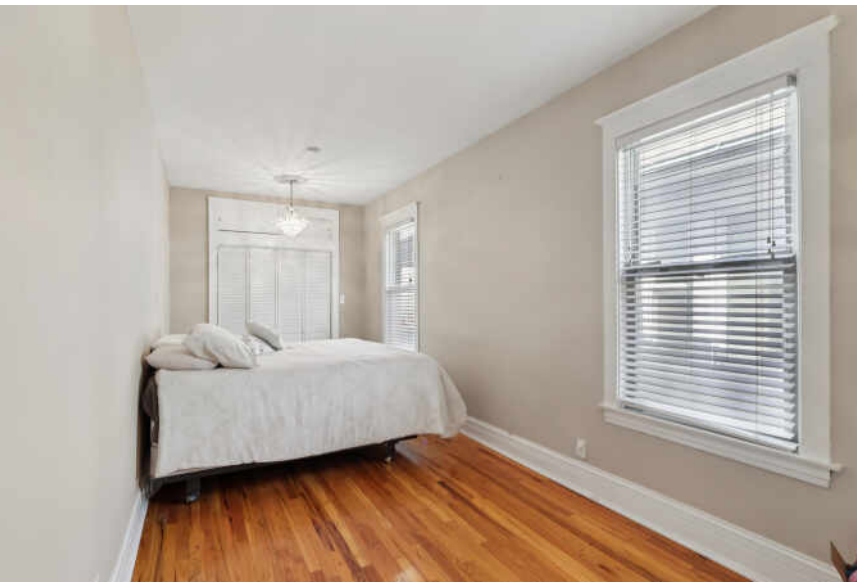
5 BEDROOM

2 BATH

TAXES: \$8,351







2321 S 60th Ct, Cicero, IL 60804

Floor plans/tour cannot be used for building or design purposes. Sizes and dimensions are approximate.



CICERO IS ONE OF THE OLDEST AND LARGEST TOWNS IN THE STATE.

Recent years have brought a revival of the city's commercial sector with an influx of businesses and large retail stores as well as condominium developments. The town includes eight distinctly different residential neighborhoods, each with their own name and characteristics: Boulevard Manor, Clyde, Drexel, Grant Works, Hawthorne, Morton Park, Parkholme, and Warren Park.

Among the area's top attractions is Hawthorne Race Course, the oldest continually run, family-owned thoroughbred racetrack in North America. The Hawthorne Park District includes parks and recreational areas with baseball and softball diamonds, soccer fields, basketball and tennis courts, volleyball courts, trails, and picnic areas.

The Cicero Metra station provides convenient service to Chicago and Aurora along the BNSF Railway.



[illegible]



EVA SANCHEZ, REALTOR

I LOVE TAKING YOU TO YOUR NEXT HOME!

(630) 561-8742

SEEYOURHOUSE@OUTLOOK.COM

WWW.SEEYOURHOUSERIGHTHERE.COM



CHRISTIE'S
INTERNATIONAL REAL ESTATE