

2333 W SAINT PAUL AVENUE #331
BUCKTOWN

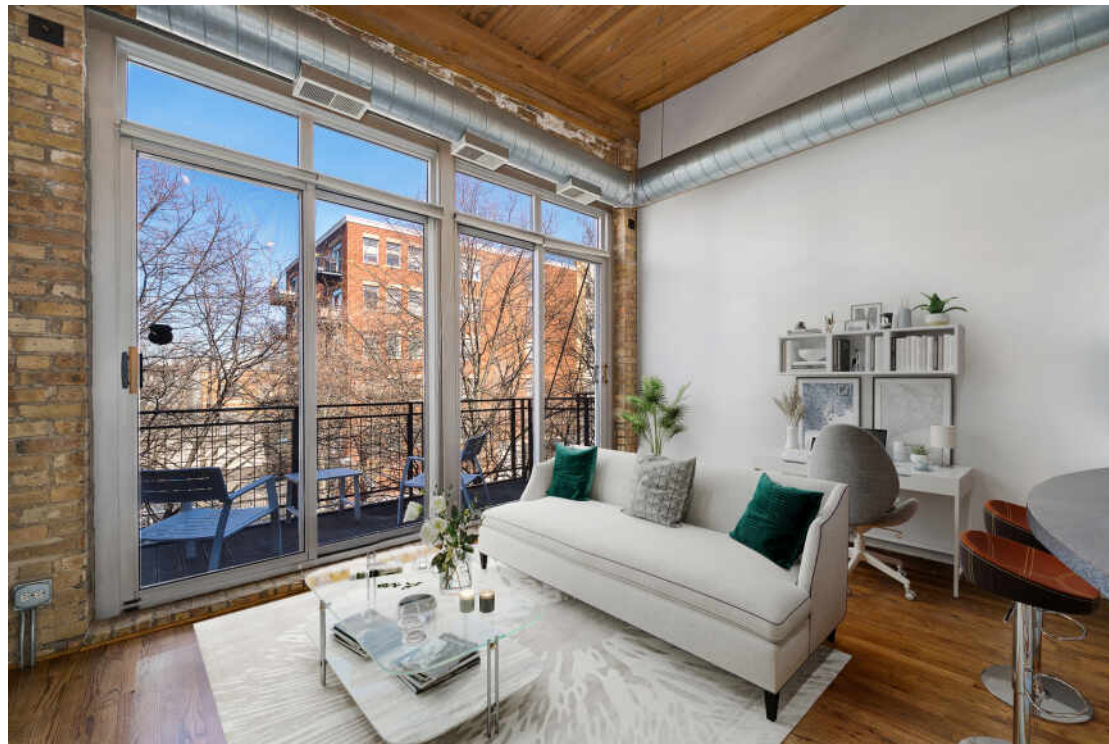




TOP-FLOOR 1 BED, 1 BATH IN SOUGHT-AFTER ST. PAUL LOFTS - PRIME BUCKTOWN LOCATION

Nestled on a picturesque, tree-lined street, this stunning timber loft offers 13-foot ceilings and dramatic floor-to-ceiling windows that flood the space with natural light. The spacious open living area features hardwood floors, exposed brick, and a cozy gas fireplace, blending industrial charm with modern comfort. The kitchen boasts stainless steel appliances and a large island—perfect for everyday living and entertaining. Step out onto the oversized balcony, ideal for grilling or relaxing outdoors. Additional highlights include in-unit laundry, deeded exterior parking in a gated lot (included in price), and a dedicated storage cage. Located in an impeccably managed elevator building with high reserves and no upcoming projects. Enjoy unbeatable access to The 606 Trail, the Blue Line, 90/94, and the vibrant shops and restaurants along Damen and Milwaukee Avenues.

1 BEDROOM
1 BATH
TAXES: \$4960
ASSESSMENTS: \$203







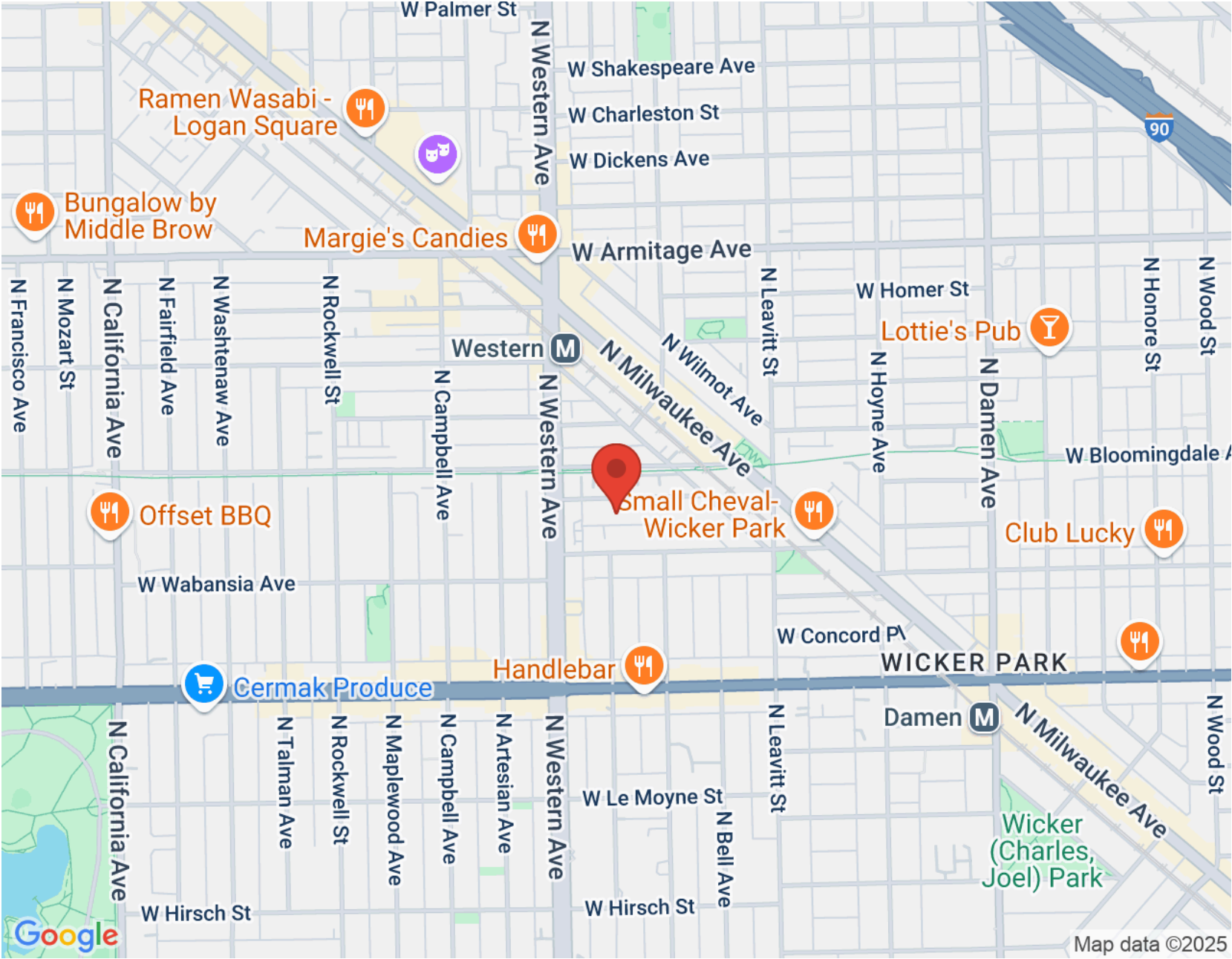
AS AN ARTISTS' COMMUNITY, NIGHTLIFE HOTSPOT, FOODIE DESTINATION, AND SHOPPING MECCA, **BUCKTOWN** IS UNDISPUTEDLY ONE OF CHICAGO'S TRENDIEST NEIGHBORHOODS.

Bucktown's restaurant scene is diverse and local friendly. Residents also enjoy a unique mix of independent bookstores, shops, bars, galleries, and theaters. Meanwhile, upscale retailers have made the neighborhood a designer destination.

Overlooking the six corners intersection, a stunning Art Deco skyscraper is now a modern boutique hotel with a rooftop bar and amazing views. A stately historic bank building on the corner is now home to a pharmacy with stunning archways and stained-glass ceilings.

Located a few miles northwest of The Loop, Bucktown has a variety of housing including modern new construction, stately brownstones, and loft apartments and condominiums.

Between the CTA's Blue Line, the 606 Trail, and numerous bus routes, it's easy for residents to get to surrounding neighborhoods. Likewise, drivers appreciate being able to hop on the expressway just east of the community.



NOTES _____



NERINGA NORTHCUTT

REAL ESTATE BROKER

CELL: 312 919 7070

NERINGA@ATPROPERTIES.COM

WWW.NERINGANORTHCUTT.COM



CHRISTIE'S
INTERNATIONAL REAL ESTATE