



2334 CENTRAL PARK AVENUE EVANSTON

2334 CENTRAL PARK AVENUE · EVANSTON



@properties | CHRISTIE'S
INTERNATIONAL REAL ESTATE

LP LUXURY
PORTFOLIO
INTERNATIONAL



MICHAEL AND LENE THOMAS BROKER

847.322.6968 mobile
info@thethomasteamonline.com
www.TheThomasTeamOnline.com

2334 CENTRAL PARK AVENUE • EVANSTON





2334 CENTRAL PARK AVENUE

FEATURES

Stunning, Fully Updated, and Move-In Ready - Thoughtfully and extensively renovated throughout, this brick home sits on one of Evanston's most charming tree-lined streets and beautifully balances modern amenities with timeless character. Step into the spacious living room and adjoining sunroom, where original moldings and a handsome wood-burning fireplace provide a warm, inviting atmosphere. The formal dining room flows seamlessly into a professionally designed kitchen boasting custom cabinetry, Carrara marble countertops, pantry cabinets, a Wolf dual-fuel range, Sub-Zero refrigerator, Bosch dishwasher, convection microwave built into an expansive island - every detail has been curated for beauty and function. Just off the kitchen, the cozy family room features a second fireplace and opens to a serene, screened porch through French doors. Stylish built-in mudroom cubbies and a powder room with designer wallpaper complete the first floor. Upstairs, the luxurious primary suite - redesigned by Benvenuti & Stein - includes two walk-in closets, a private water closet with hand sink, and a spa-like bath with a walk-in shower, soaking tub, and double vanity. Bedroom #2, currently used as a second-floor family room or den, offers custom built-ins and a spacious closet. Bedroom #3 is generously sized and sits beside the newly renovated hall bath, also designed by Benvenuti & Stein. The third-floor bedroom en-suite is a hidden gem - perfect for guests - complete with a private bath and thoughtful designer touches.



MICHAEL AND LENE THOMAS BROKER

847.322.6968 mobile

info@thethomasteamonline.com
www.TheThomasTeamOnline.com

FEATURES (CONTINUED)

The finished basement includes a workout area, recreation space, a separate office/bonus room, abundant storage, and a light-filled laundry room. Outdoors, enjoy a large, fenced backyard with a deck, stone patio, and expansive green space - ideal for entertaining, gardening, or relaxing. Additional highlights include a two-car brick garage, zoned central AC, stunning ebony-stained hardwood floors, recessed lighting, and numerous recent updates (ask listing agent for the full list). Impeccably maintained and filled with character, this is truly an exceptional home.

Love where you live!

































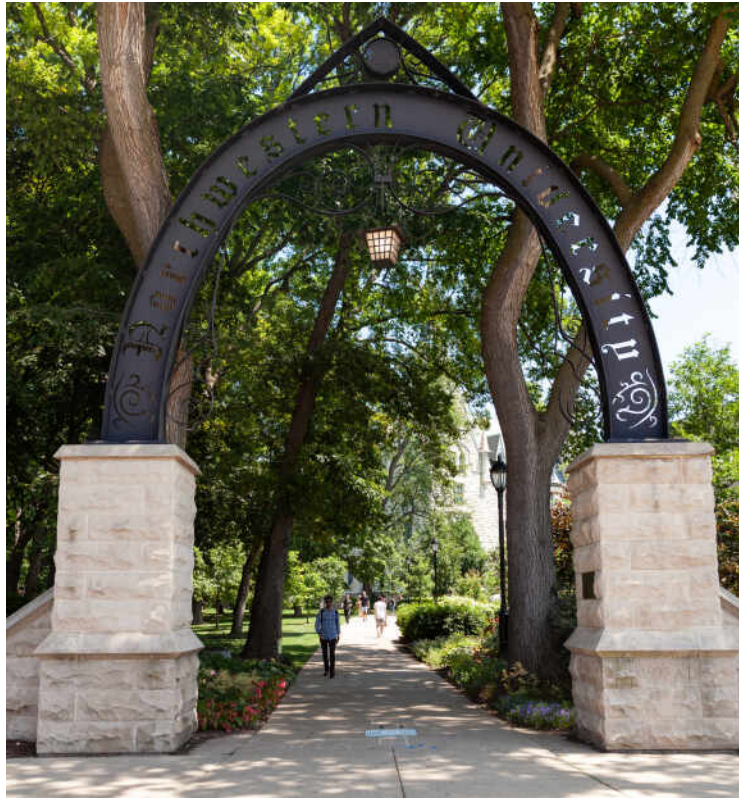












LOCATED JUST NORTH OF CHICAGO, **EVANSTON** OFFERS A BEAUTIFUL NATURAL SETTING ON THE SHORES OF LAKE MICHIGAN.

Locals love having the conveniences of city living in a beautiful suburban setting. The community has a bustling downtown business district and offers easy access to Chicago, making it a popular place to call home.

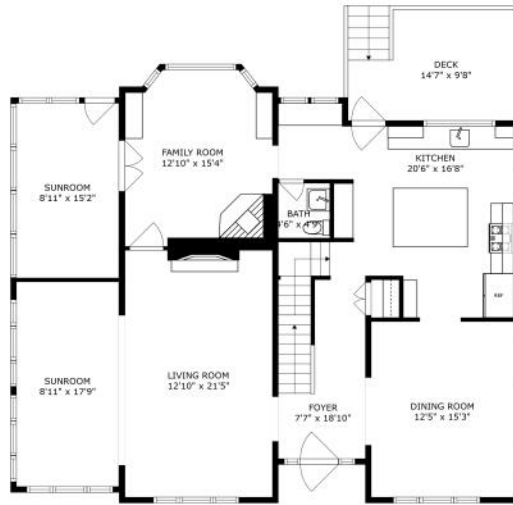
Its historic homes, tree-lined streets, and sprawling beaches may be the first things that catch your eye, but there's a lot more to love here.

Home to world-class Northwestern University, Evanston residents have plenty to cheer about – from watching Big Ten sports and enjoying cultural events to exploring academic pursuits.

The thriving downtown district includes bookstores, boutiques, galleries, theaters, and restaurants that attract city dwellers and suburbanites alike, while outdoor enthusiasts enjoy the many nature paths, parks, and public beaches the community offers.

Evanston boasts a variety of homes in a wide range of styles and price points. You can find everything from stately historic mansions along the lakefront and well-maintained single-family homes on tree-lined streets, to contemporary townhomes and newer high-rises that are near local shops and restaurants.

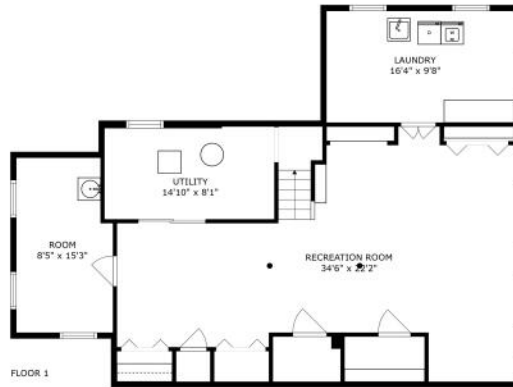
Residents have several convenient options to commute to downtown Chicago including the CTA's Purple Line and bus routes, as well as Pace bus routes and three Metra stations



FLOOR 2



FLOOR 3



FLOOR 1



FLOOR 4

SIZES AND DIMENSIONS ARE APPROXIMATE, ACTUAL MAY VARY.



