

233 E 13TH STREET #2107
SOUTH LOOP





ROOM DIMENSIONS

LIVING ROOM : 20' × 11'

DINING ROOM : 17' × 15'

KITCHEN : 13' × 9'

PRIMARY BEDROOM : 20' × 13'

SECOND BEDROOM : 15' × 11'

2 BEDROOM

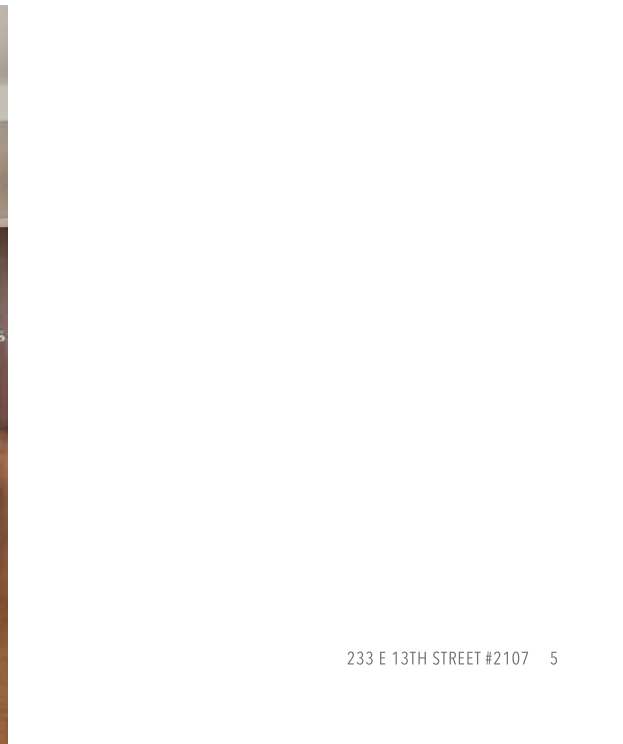
2 BATH

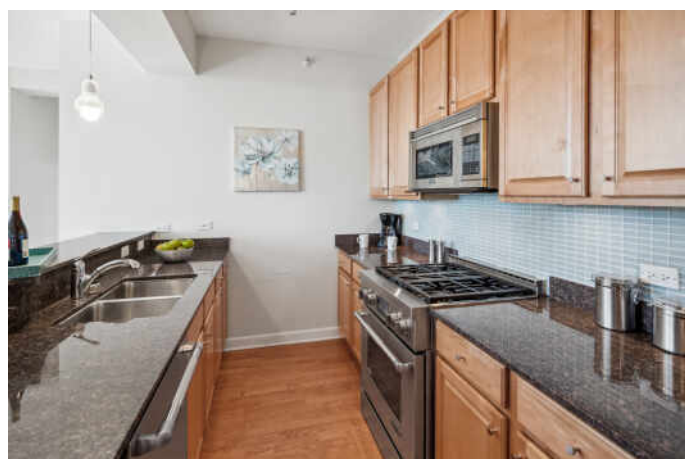
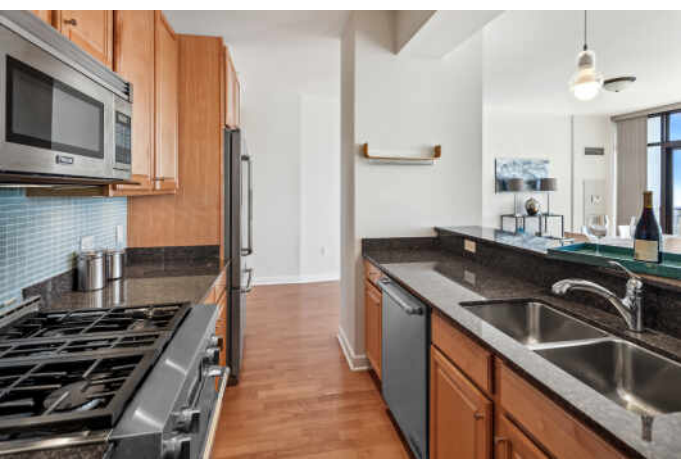
TAXES: \$8,415

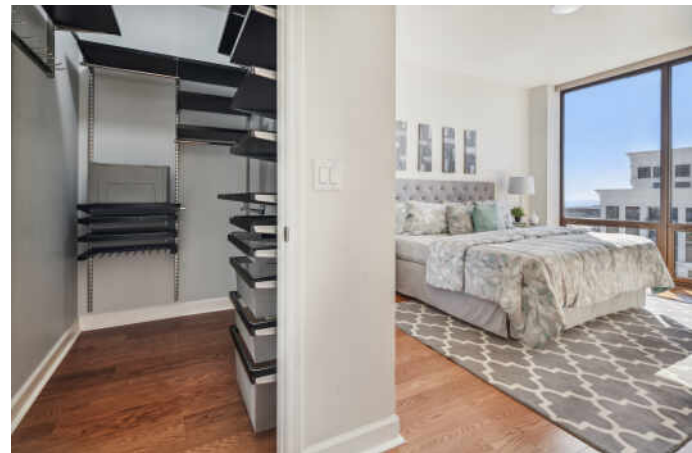
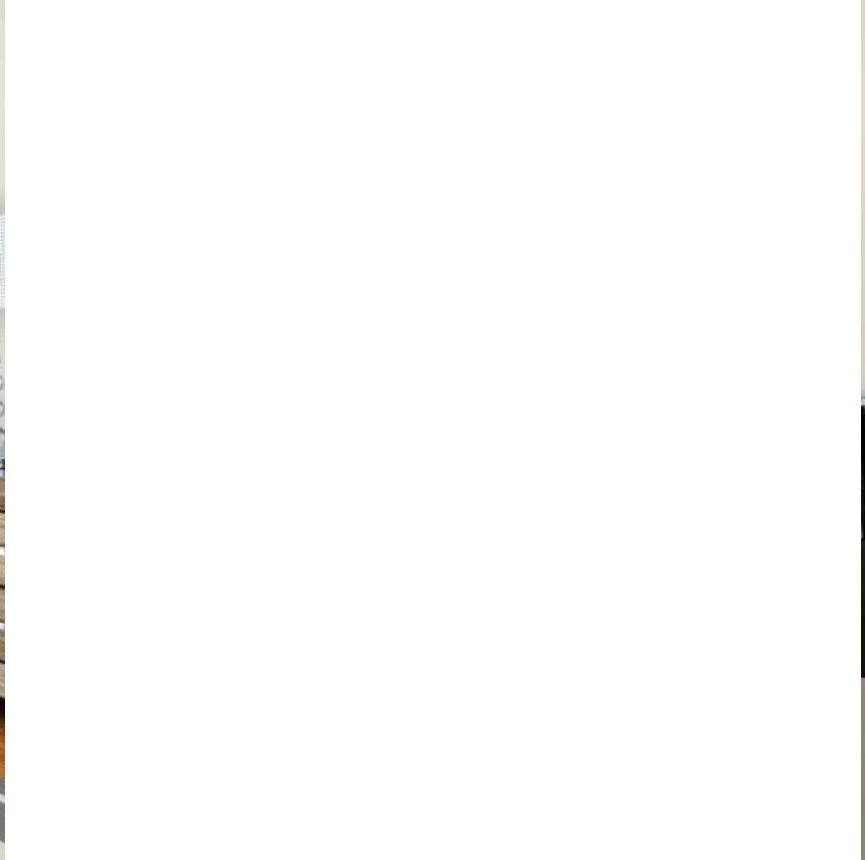
ASSESSMENTS: \$699 / MONTH

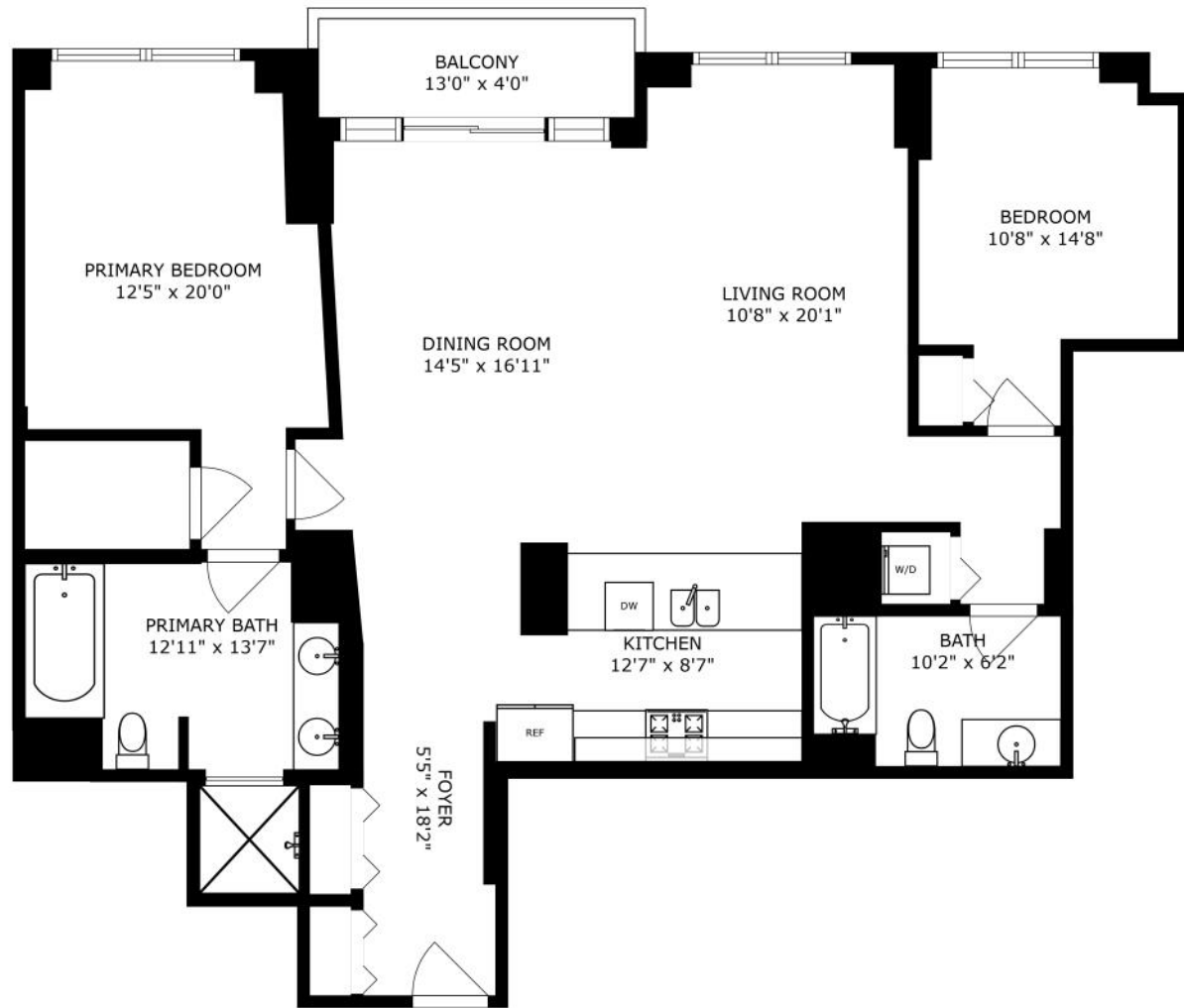
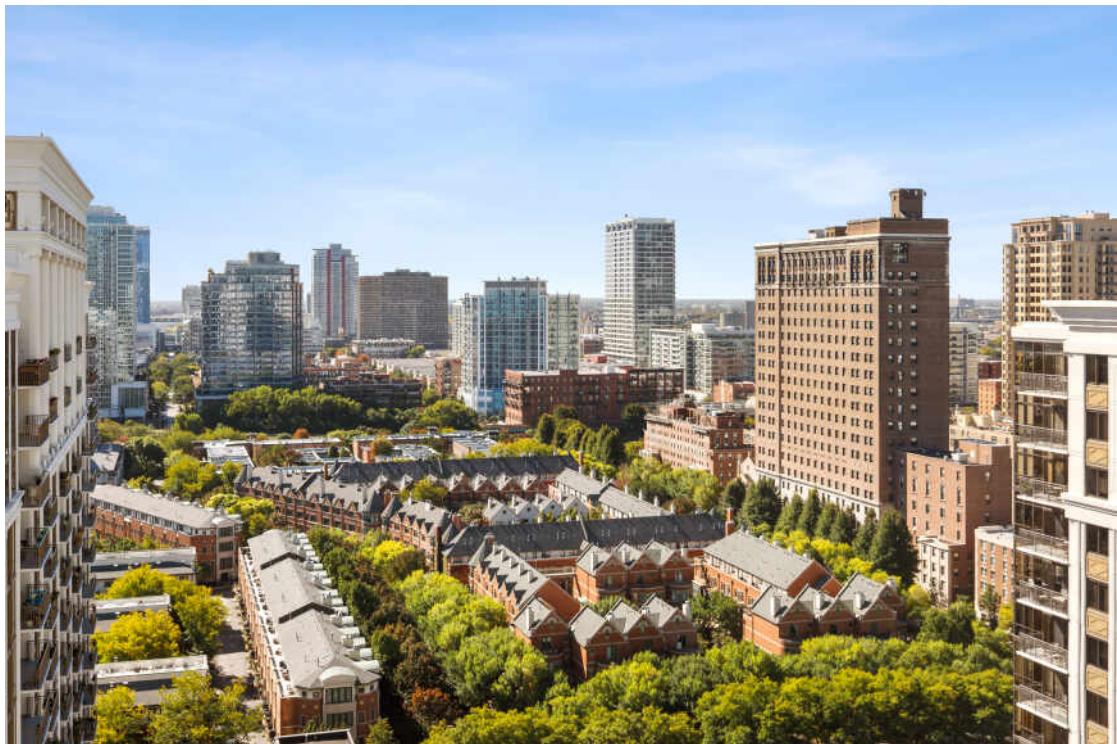
MUSEUM POINTE

2 bed/2 bath high-floor condo at the popular Museum Pointe. This beautiful home has a lot of desired features, including high ceilings, split floor plan, a large entry foyer, hdwd floors thru-out incl. the bedrooms. A large master suite with a walk-in closet, and a huge master bath. The kitchen has 42" cabinets & granite counters with a large breakfast bar, SS appls, (Jenn-Air & Viking) & Ann Sacks tile backsplash. Balcony with fabulous south views of Lake Michigan and Soldier Field. Elfa closets in the entire home. Full amenity building with 24-hour doormen, fitness room, penthouse level party room, a rooftop deck, outdoor swimming pool & clubhouse. Easy access to the lake, museum campus, Grant Park, El trains, and grocery stores (Trader Joe's, Whole Foods, Jewel). Heated garage parking #45 is available for \$30,000.

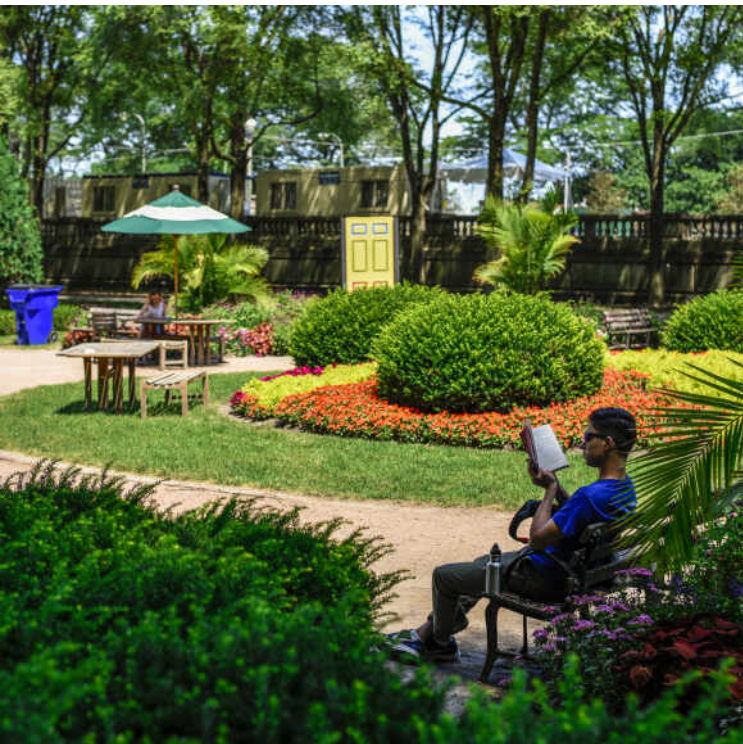
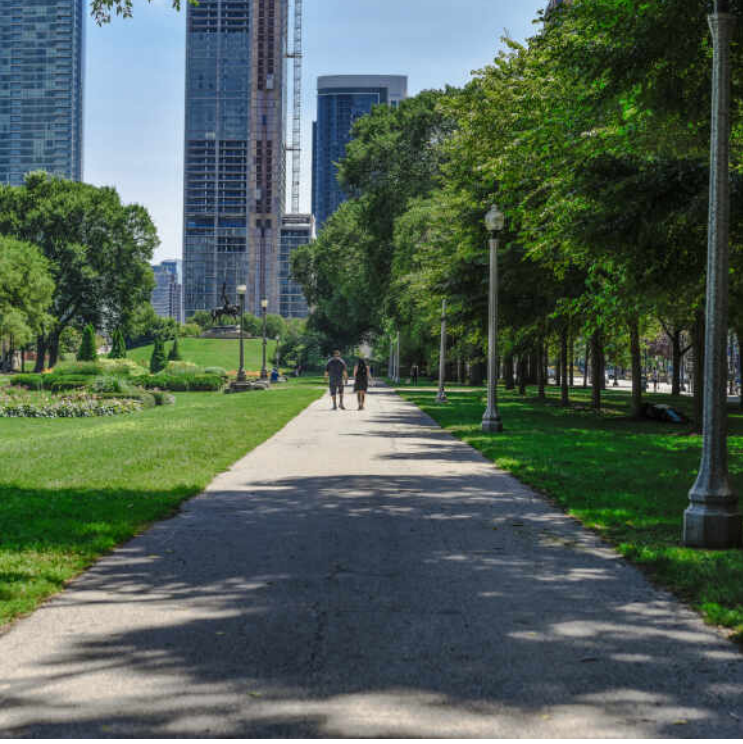








SIZES AND DIMENSIONS ARE APPROXIMATE, ACTUAL MAY VARY.



CHARACTERIZED BY TOWERING HIGH
RISES AND HISTORIC POCKETS THAT
REFLECT THE AREA'S STORIED PAST, THE
SOUTH LOOP IS A DISTINCTIVE CHICAGO
NEIGHBORHOOD.

Chicago's original Gold Coast in the late 19th century, the South Loop was once home to the likes of Marshall Field, George Pullman, and Philip Armour. Today the vibrant neighborhood is known for its access to the lakefront, shops, restaurants, parks, Museum Campus, and The Loop.

The South Loop is comprised of several historic areas including Printer's Row, which features a number of buildings that have been converted into residential lofts, along with Motor Row District and Prairie Avenue District. Meanwhile, several apartment and condominium buildings are under construction, bringing thousands of new residences to the neighborhood.

The South Loop's housing boom has brought with it an influx of retailers along with eateries and nightlife on South Michigan Avenue. The Roosevelt Collection is a popular destination featuring a movie theater and an assortment of retailers.

Museum Campus is the cultural hub of the South Loop featuring attractions including the Field Museum, Shedd Aquarium, Adler Planetarium, and Soldier Field. Residents also enjoy being in close proximity to Northerly Island and public transportation including the CTA's Roosevelt station.



NOTES _____



CHRISTINE HANCOCK

(312) 296-9300

CHANCOCK@ATPROPERTIES.COM

CHRISTINEHANCOCK.COM

3D VIDEO - [HTTPS://BIT.LY/233E133D](https://bit.ly/233E133D)



CHRISTIE'S
INTERNATIONAL REAL ESTATE

233E13TH2107.INFO