

**236 N GRACE STREET, LOMBARD**  
KATIE CHIVILO



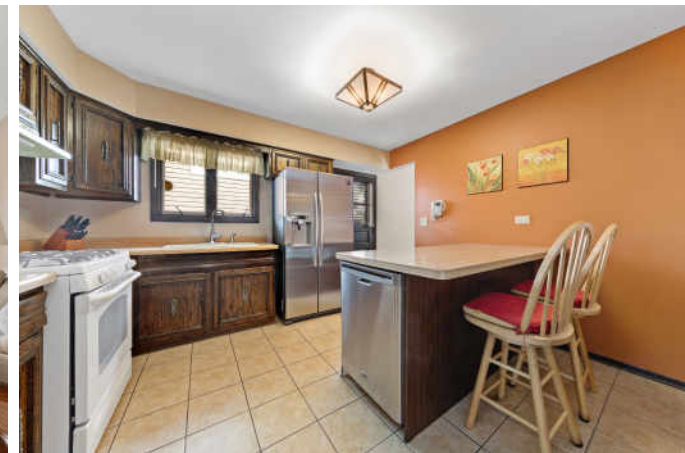
**@properties®**



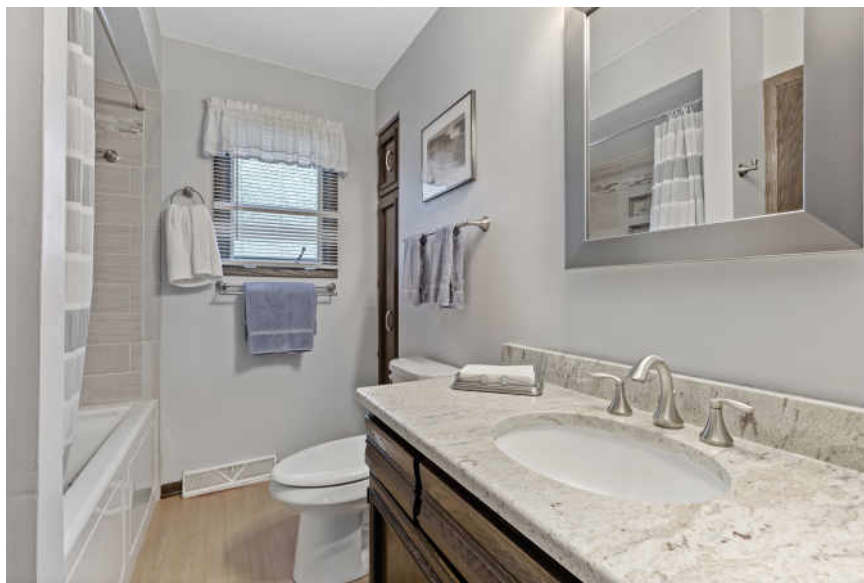


Don't miss this home located near downtown Lombard! 2nd owner of this impeccably maintained home, 1st owner was the builder. Fully fenced yard with a gas line to the barbecue pit. New stainless steel refrigerator(2019) in the kitchen with an island. 2nd floor bath was remodeled in 2015 with a whirlpool tub and ceramic tile surround. New roof on the house and garage in 2019. New A/C in 2018. Freshly painted lower level with a gas/woodburning fireplace for those crisp fall nights. Double closet in the master bedroom. Concrete crawl space. Bay window in the living room. This home has it all. Walking distance to downtown Lombard, elementary school, Metra, Lilacia Park, the library, Great Western Trail, the list goes on.













DESIGNATED THE "LILAC VILLAGE," **LOMBARD** IS CHARACTERIZED BY ITS QUAIN, TREE-LINED STREETS AND CLOSE-KNIT COMMUNITY.

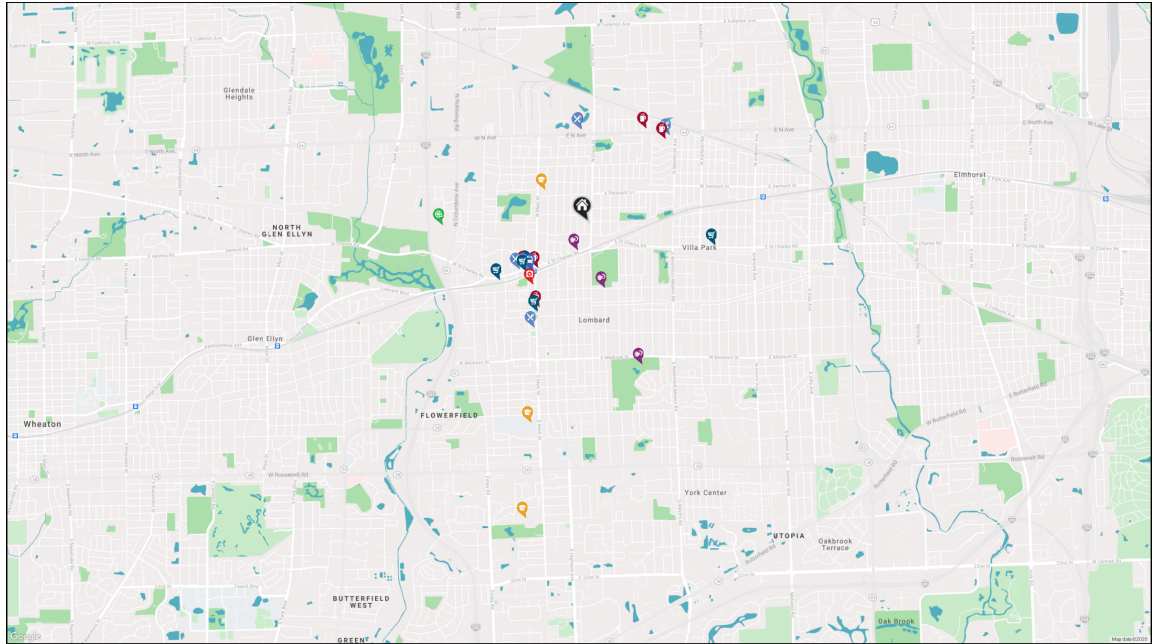
Lombard residents are proud of the Village's rich history, diverse entertainment opportunities, and unique seasonal events, such as Saturday night Cruise Nights with vintage vehicles on display throughout the summer.

Since 1930, the village has hosted an annual lilac festival and parade in May. Lilac Time is Lombard's famed 16-day horticultural festival. Many lilac-themed events take place throughout the year, including a formal ball, concerts, wine and beer tastings in the park, a Mother's Day brunch, and an arts and crafts fair.

Lombard students are served by two elementary and middle school districts. High school students attend Glenbard schools, named for the district that is shared with the Village of Glen Ellyn.

Metra's Union Pacific West Line railway stops in Lombard, providing commuter transportation to downtown Chicago.





#### RESTAURANTS

Shannon's Deli  
11 SOUTH PARK AVENUE, 0.7 MI

Babcock's Grove House  
101 WEST SAINT CHARLES ROAD, 0.7 MI

Bricks Wood Fired Pizza -  
Downtown Lombard  
132 WEST SAINT CHARLES ROAD, 0.8 MI

Starbucks  
332 EAST NORTH AVENUE, 0.9 MI

Portillo's Hot Dogs  
635 1/2 NORTH AVENUE, 1.1 MI

Gianorio's Pizza & Pasta  
434 SOUTH MAIN STREET, 1.1 MI

#### COFFEE SHOPS

Dunkin'  
1 EAST SAINT CHARLES ROAD, 0.6 MI

The Corner House  
100 WEST SAINT CHARLES ROAD, 0.7 MI

The Prairie Club  
12 WILLOW STREET EAST UNIT A, 0.9 MI

McDonald's  
410 WEST NORTH AVENUE, 1.0 MI

Cafe A  
VILLA PARK, 1.1 MI

#### SHOPPING

FairyTales Inc  
28 WEST SAINT CHARLES ROAD, 0.7 MI

Bob James Magic, Antiques, and  
Oddities  
19 WEST SAINT CHARLES ROAD, 0.7 MI

Paradiso  
6 S PARK AVE, 0.7 MI

Tropi-Quatics Pet Center  
337 SOUTH MAIN STREET, 0.9 MI

Walgreens  
309 WEST SAINT CHARLES ROAD, 1.0 MI

J & R Cycle & Ski  
240 WEST SAINT CHARLES ROAD, 1.2 MI

#### HEALTH CLUBS

All Day Fitness  
376 EAST SAINT CHARLES ROAD SUITE 6,  
0.3 MI

Lombard Commons Tennis  
Courts and Frisby Golf Course  
LOMBARD, 0.6 MI

Anytime Fitness  
338 EAST NORTH AVENUE, 0.9 MI

Lombard skatepark  
LOMBARD, 1.4 MI

#### HOSPITALS

Edward-Elmhurst Health Center -  
Lombard  
130 SOUTH MAIN STREET, 0.8 MI

#### SCHOOLS

Pleasant Lane Elementary  
School  
401 NORTH MAIN ST, 0.5 MI

Glenbard East High School  
1014 SOUTH MAIN ST, 1.9 MI

Glenn Westlake Middle School  
1514 SOUTH MAIN ST, 2.8 MI

#### ENTERTAINMENT

Great Western Trail  
223 CIMARRON RD E, 1.4 MI

#### TRANSIT

Lombard  
METRA - MILWAUKEE DISTRICT WEST,  
0.7 MI





**KATIE CHIVILO**

(630) 373-4392

KCHIVILO@ATPROPERTIES.COM



**236NGRACEST.INFO**

All specifications, features, designs, price, assessments, taxes and materials are subject to change without notice. Depicted floor plans and architectural renderings are only an artist's impression.

