

**237 WESTMINSTER DRIVE**  
BLOOMINGDALE





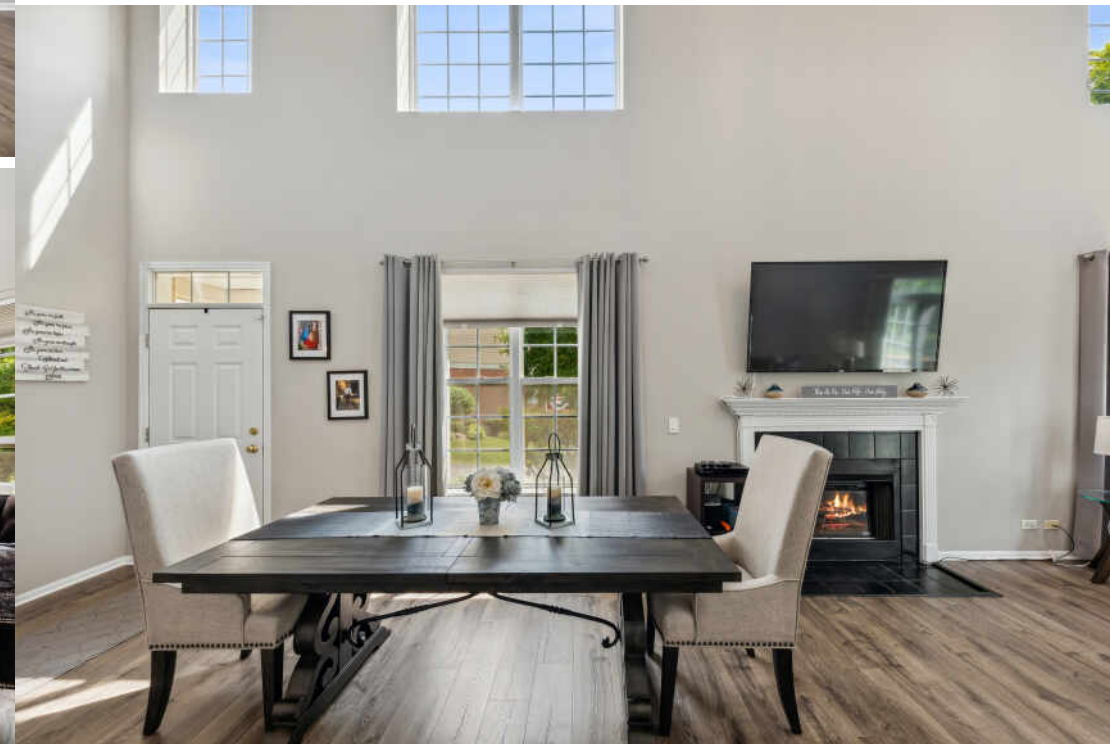
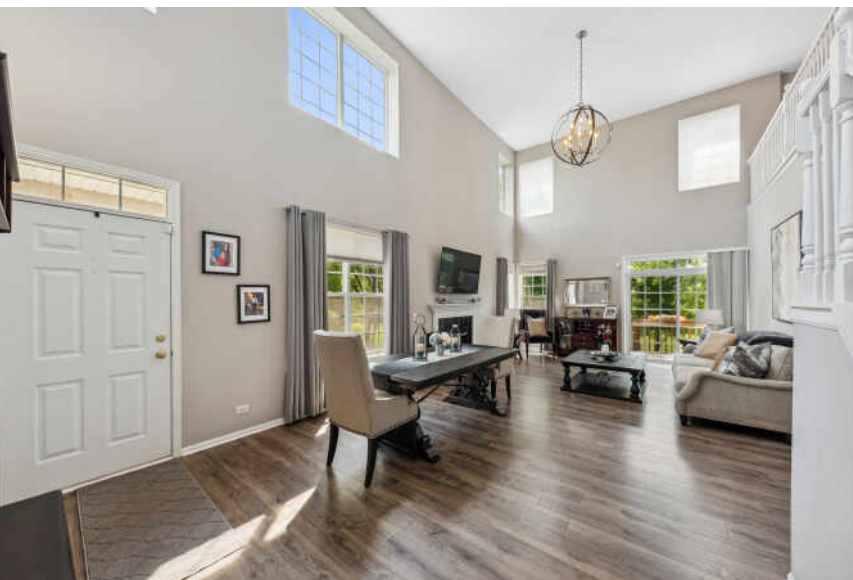


## PROPERTY DETAILS

LOCATION LOCATION LOCATION!! Welcome home to your very desired end unit townhome, sitting over a beautiful view of the park, bike/walking trail, and pond. This unit has a First Floor Master Suite. You heard right, a First Floor Master Suite; These are hard to find. It features a walk-in closet, 2 additional closets, plus a private bath with double bowl vanity, large soaker tub & separate shower. In addition, on the main level, you have a beautiful, spacious kitchen for maneuvering all over while cooking your gourmet meals. This kitchen has 42-inch cabinets, all stainless-steel appliances and Corian counters, not to mention it is equipped with an eating area which has a beautiful Bay Window and can fit a nice table and your whole family. The kitchen then opens up to your beautiful 2 story living room with a fireplace and two tiered windows. It is light and bright and has a patio door opening up to your deck, where you can drink your coffee or tea and relax as you watch the serene views. Laundry is on the main level for your convenience which leads to your two-car garage. There is also a half bath for your guests. The entire first floor has been updated with new floors, light fixtures and new doors. Upstairs you have an additional two large bedrooms, a full bath and large loft that looks over Springfield Park. You can use the extra space for an office, kids' play area, reading nook, whatever you would like. Wait, there is more. A full English basement. It has a full bath, an office and large rec room. The amount of storage is amazing. New Roof and New Hot Water Heater. Conveniently located near expressways and shopping and dining. All you have to do is come and see it. Your search will be over!!

3 BEDROOM  
3.1 BATH  
TAXES: \$9,166  
ASSESSMENTS: \$290 / MONTH



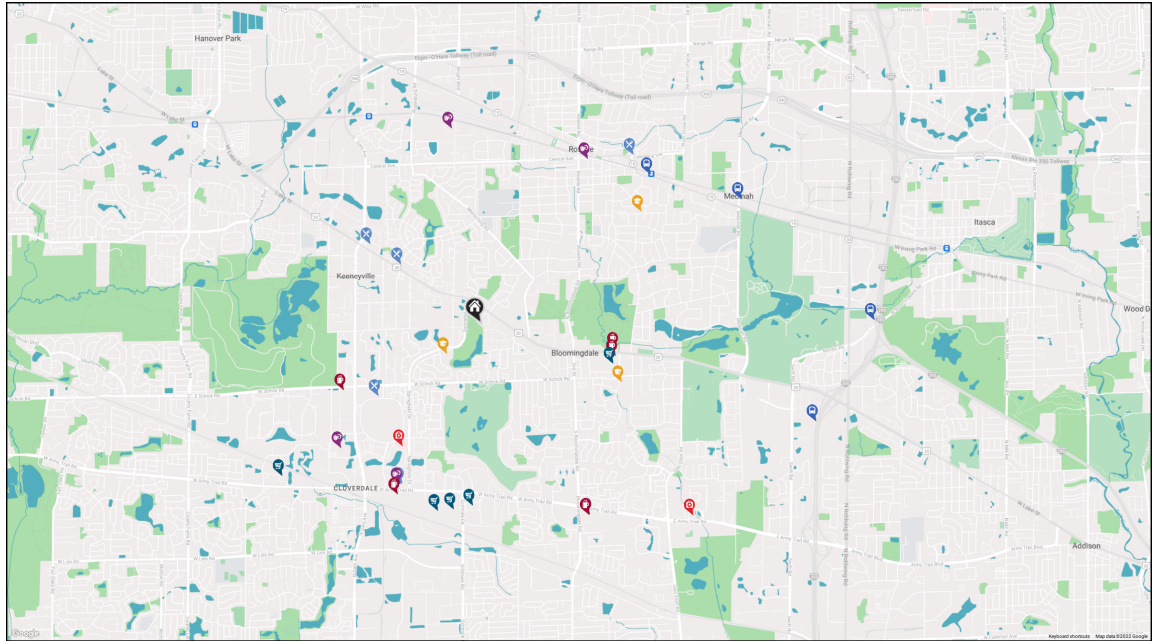












#### RESTAURANTS

Villaggio Ristorante  
1242 WEST LAKE STREET, 0.9 MI

Jameson's Charhouse  
94 STRATFORD DRIVE, 1.2 MI

Brunch Cafe-Roselle  
1500 WEST LAKE STREET, 1.3 MI

Bloomington - Lou Malnati's  
Pizzeria  
369 WEST ARMY TRAIL ROAD, 1.6 MI

Sushi Bar & Japanese Restaurant  
369 WEST ARMY TRAIL ROAD, 1.6 MI

Bulldog Ale House  
394 IRVING PARK ROAD, 2.1 MI

#### COFFEE SHOPS

Starbucks  
170 EAST LAKE STREET, 1.3 MI

Dino's Cafe  
171 EAST LAKE STREET, 1.3 MI

Dunkin'  
142 SOUTH GARY AVENUE, 1.4 MI

Panera Bread  
370-420 WEST ARMY TRAIL ROAD SUITE  
420, 1.7 MI

FITFRESH Juicebar Glendale  
Heights  
265 EAST ARMY TRAIL ROAD, 2.0 MI

#### SHOPPING

Angelo Caputo's Fresh Markets -  
Bloomington  
166 EAST LAKE STREET, 1.3 MI

Target  
175 WEST ARMY TRAIL ROAD, 1.7 MI

Walmart Supercenter  
314 WEST ARMY TRAIL ROAD, 1.7 MI

DICK'S Sporting Goods  
328 WEST ARMY TRAIL ROAD, 1.8 MI

Costco Wholesale  
505 WEST ARMY TRAIL ROAD, 2.3 MI

#### HEALTH CLUBS

Body & Brain Yoga Tai Chi  
369 WEST ARMY TRAIL ROAD STE 20,  
1.6 MI

Life Time  
455 SCOTT DRIVE, 1.7 MI

Orangetheory Fitness  
39 MAIN STREET, 1.8 MI

CrossFit Roselle  
200 NORTH GARDEN AVENUE, 1.8 MI

LA Fitness  
265 EAST ARMY TRAIL ROAD, 2.0 MI

#### HOSPITALS

Dupage Medical Group  
220 SPRINGFIELD DRIVE, 1.3 MI

AMITA Health Medical Group  
Allergy & Immunology  
Bloomington  
303 EAST ARMY TRAIL ROAD STE. 403,  
2.6 MI

#### SCHOOLS

Erickson Elementary School  
277 SPRINGFIELD DR, 0.4 MI

Westfield Middle School  
149 FAIRFIELD WAY, 1.4 MI

Lake Park High School  
500 WEST BRYN MAWR AVE, 1.8 MI

#### TRANSIT

Roselle  
METRA - MILWAUKEE DISTRICT WEST,  
2.1 MI

Medinah  
METRA - MILWAUKEE DISTRICT WEST,  
2.7 MI

I-355  
I-355, 3.2 MI

I-290  
I-290, 3.6 MI

## NOTES



## JULIE PRESTA

@PROPERTIES

630-440-8869

JULIEPRESTA@ATPROPERTIES.COM



CHRISTIE'S  
INTERNATIONAL REAL ESTATE

237WESTMINSTER237.INFO

All specifications, features, designs, price, assessments, taxes and materials are subject to change without notice. Depicted floor plans and architectural renderings are only an artist's impression.

