

238 N GREENWOOD AVENUE  
PALATINE



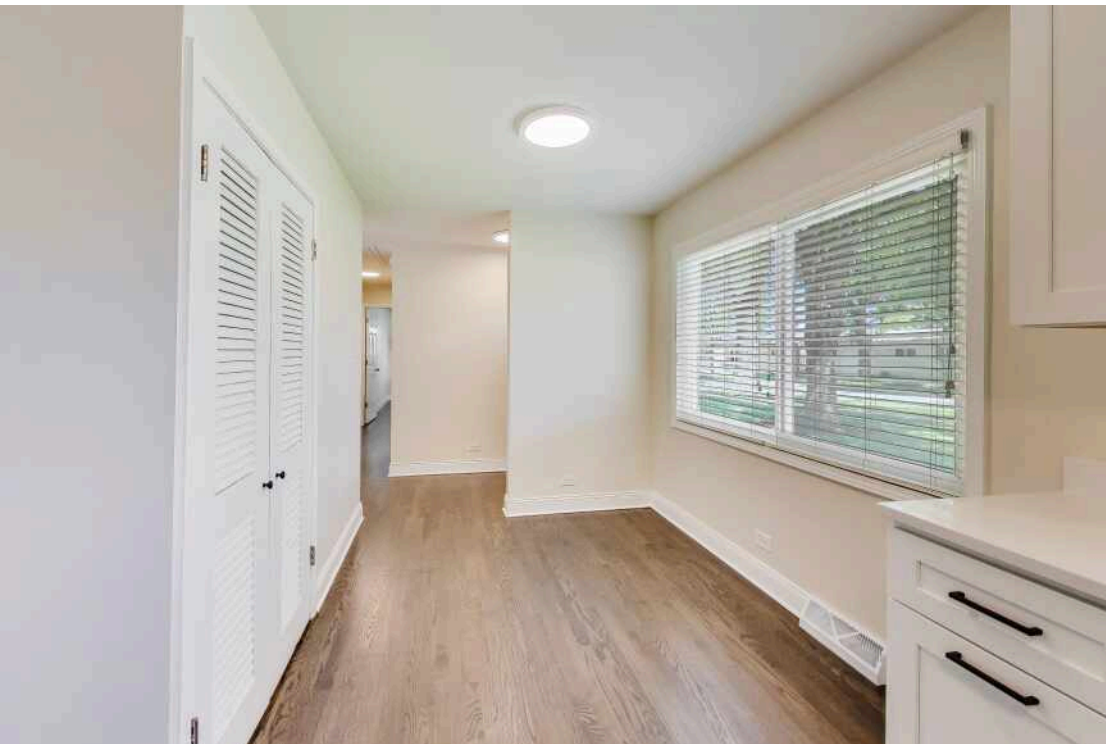


**3 BEDROOM**  
**1 BATH**  
**TAXES: \$7,824**

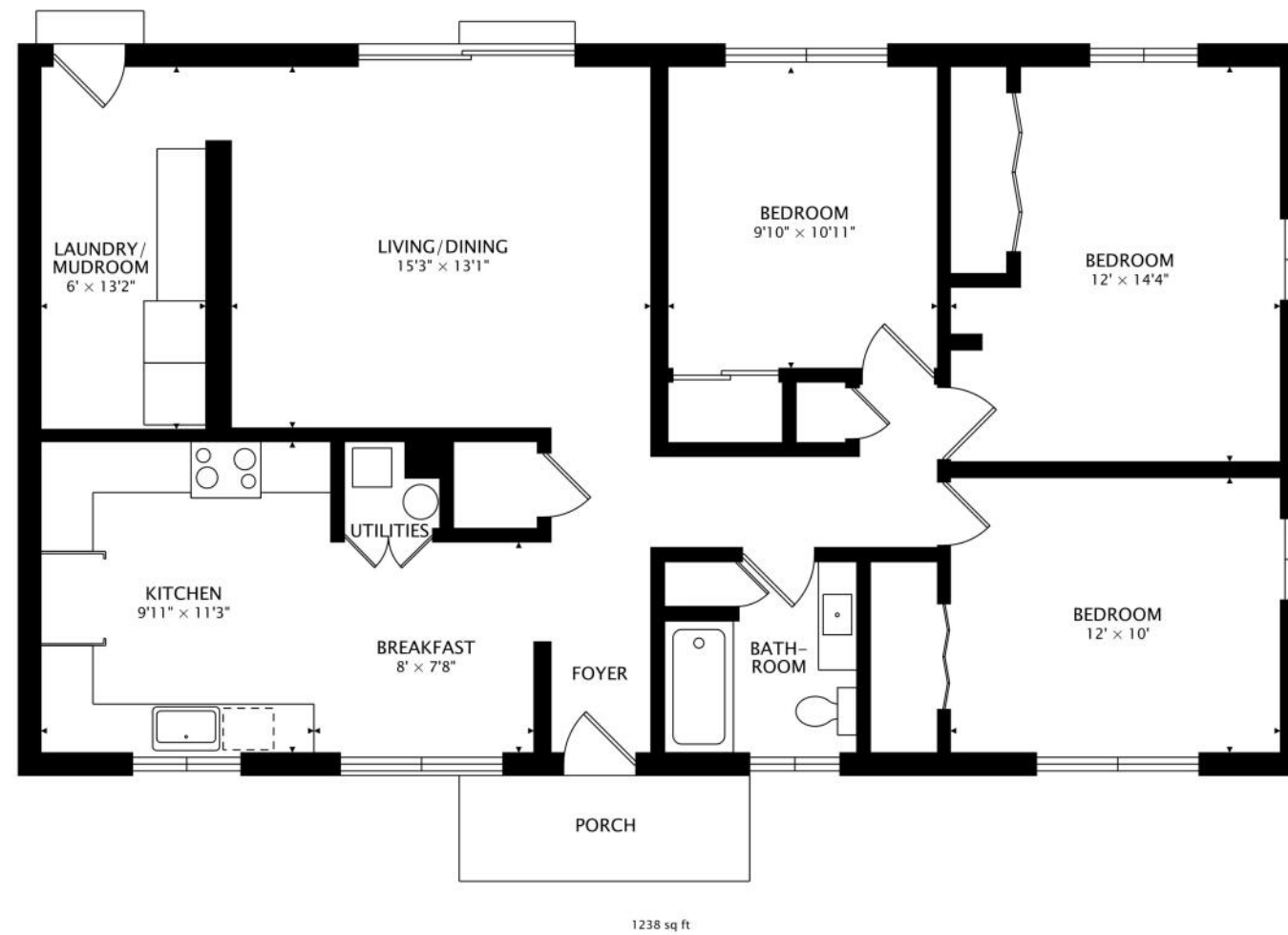
## **PALATINE GEM!**

**LOCATION! MINUTES TO METRA AND DOWNTOWN PALATINE!** Completely updated and truly move-in ready, this beautifully renovated one-story ranch blends modern style with timeless comfort. From the moment you arrive, you'll appreciate the exceptional curb appeal featuring new LP siding on the home, new vinyl siding on the garage, a new driveway, updated exterior lighting, fresh landscaping, and a new mailbox. Inside, gleaming oak hardwood floors have been professionally sanded and refinished, complemented by fresh paint throughout, all new trim and base molding, updated lighting, new outlets, switches, and registers. The stunning remodeled kitchen offers brand-new cabinetry, elegant quartz countertops, new sink and faucet, updated lighting, and abundant workspace perfect for everyday living and entertaining. The mudroom has also been thoughtfully updated with new cabinetry and countertops for added style and functionality. Three spacious bedrooms and beautifully refreshed living spaces create a warm, inviting layout filled with natural light. The updated bathroom features a new vanity, mirror, light fixtures, shower head, towel bar, and toilet paper holder. Additional improvements include new wood flooring in the mudroom, kitchen, and hallway, a new sliding glass door, and new mudroom door. Step outside to a private, landscaped yard ideal for entertaining, gardening, or relaxing outdoors, complete with a detached two-car garage offering extra storage and flexibility. Major mechanical updates include updated electrical service, a hot water heater approximately 5 years old, furnace and central air approximately 20 years old, gutters and fascia approximately 9 years old, and roof approximately 10 years old. Wood fence installed in 1997. A rare turnkey opportunity with impressive upgrades throughout - simply unpack and enjoy!











## THE VILLAGE OF **PALATINE** HAS MASTERED THE ART OF BALANCE.

The growing community has a healthy mix of residents who enjoy its friendly suburban lifestyle and businesses that fuel the local economy.

The village embraces growth to support a wealth of amenities and services. The Palatine Park District has 28 parks, an 18-hole golf course, and a variety of classes from fitness and sports to arts and crafts. Palatine offers scenic views with winding trails, beautiful residential areas, and nearby Deer Grove Forest Preserve.

Palatine's downtown business district is both charming and self-sufficient for residents. Restaurants include a mix of local favorites from classic eateries to upscale breweries, as well as a variety of local bars. The village hosts several street festivals and a popular farmers market.

Commuters have access to the Chicago Loop with the Palatine Metra station and I-90. The nearby Chicago Executive Airport offers private and corporate aircraft services.





## CYNDY HASS

1 8477072224

847-367-0500

CHASS@ATPROPERTIES.COM



 | 