

23 TRYON FARM LANE  
MICHIGAN CITY







#### ROOM DIMENSIONS

LIVING ROOM : 15.7' × 15.7'

DINING ROOM : 18.0' × 11.9'

KITCHEN : 11.3' × 15.7'

PRIMARY BEDROOM : 14.0' × 15.7'

SECOND BEDROOM : 10.9' × 13.1'

THIRD BEDROOM : 11.4' × 15.7'

3 BEDROOM

2 BATH

ASSESSMENTS: \$295 / MONTH

Don't miss this opportunity to live in the highly coveted and conservation-minded community of Tryon Farm. This 3 bed / 2 bath modern interpretation of a traditional farmhouse offers peace & tranquility with beautiful views across the nearby meadow. Inside, the craftsman-inspired wood finishes exude warmth and charm while a cathedral ceiling and ample windows provide lots of natural sun light. There is plenty of space to spread out including an open concept living/dining area, a large eat-in country kitchen, a lofted workspace, and a separate lofted library / sleeping area. There is also a screened-in porch with a Nana wall allowing the living/dining room to be combined with the porch, and a private deck with a newly refinished pergola for open-air enjoyment. Further, you can stroll along Tryon's many trails spread over 100 acres of shared and preserved woodlands, pasture, meadowlands and pond; or swim in the eco-friendly pool. (Separate membership required.) Located only 65 miles from Chicago's loop and a few miles to the beaches of Lake Michigan, this is the perfect getaway.

Book your showing today!

- 3 Bedrooms / 2 Bath
- Open Concept Living Room / Dining Room
- Eat-in Country Kitchen
- Screened-In Porch with a Nana wall
- Woodburning Fireplace
- Office
- Reading Nook along the Staircase
- Pergola Covered Deck













**TOTAL: 1907 sq. ft**  
FLOOR 1: 1450 sq. ft. FLOOR 2:

FLOOR 1: 1159 sq. ft, FLOOR 2: 748 sq. ft  
EXCLUDED AREAS: SCREENED PORCH: 103 sq. ft, DECK: 176 sq. ft, OPEN TO BELOW: 170 sq. ft,  
WALLS: 175 sq. ft

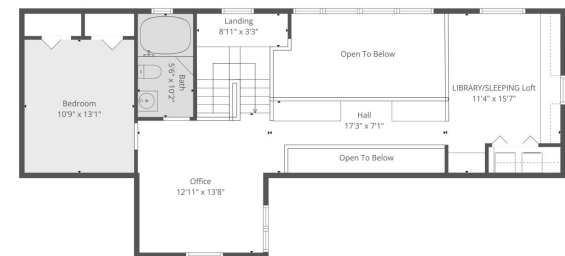
Floor Plan Created By Cubicool App. Measurements Deemed Highly Reliable But Not Guaranteed.



**TOTAL: 1907 sq. ft**

FLOOR 1: 1159 sq. ft. FLOOR 2: 748 sq. ft.  
EXCLUDED AREAS: SCREENED PORCH: 103 sq. ft. DECK: 176 sq. ft. OPEN TO BELOW: 170 sq. ft.  
WALLS: 175 sq. ft.

© 2000 by John Wiley & Sons, Inc.



**TOTAL: 1907 sq. ft**

FLOOR 1: 1159 sq. ft, FLOOR 2: 748 sq. ft  
EXCLUDED AREAS: SCREENED PORCH: 103 sq. ft, DECK: 176 sq. ft, OPEN TO BELOW: 170 sq. ft,  
WALLS: 175 sq. ft



[illegible]



## MICHAEL JEFVERT

(312) 316-9151

MJEFVERT@ATPROPERTIES.COM

111 FRANKLIN ST.

MICHIGAN CITY, IN, 46360



All specifications, features, designs, price, assessments, taxes and materials are subject to change without notice. Depicted floor plans and architectural renderings are only an artist's impression.

