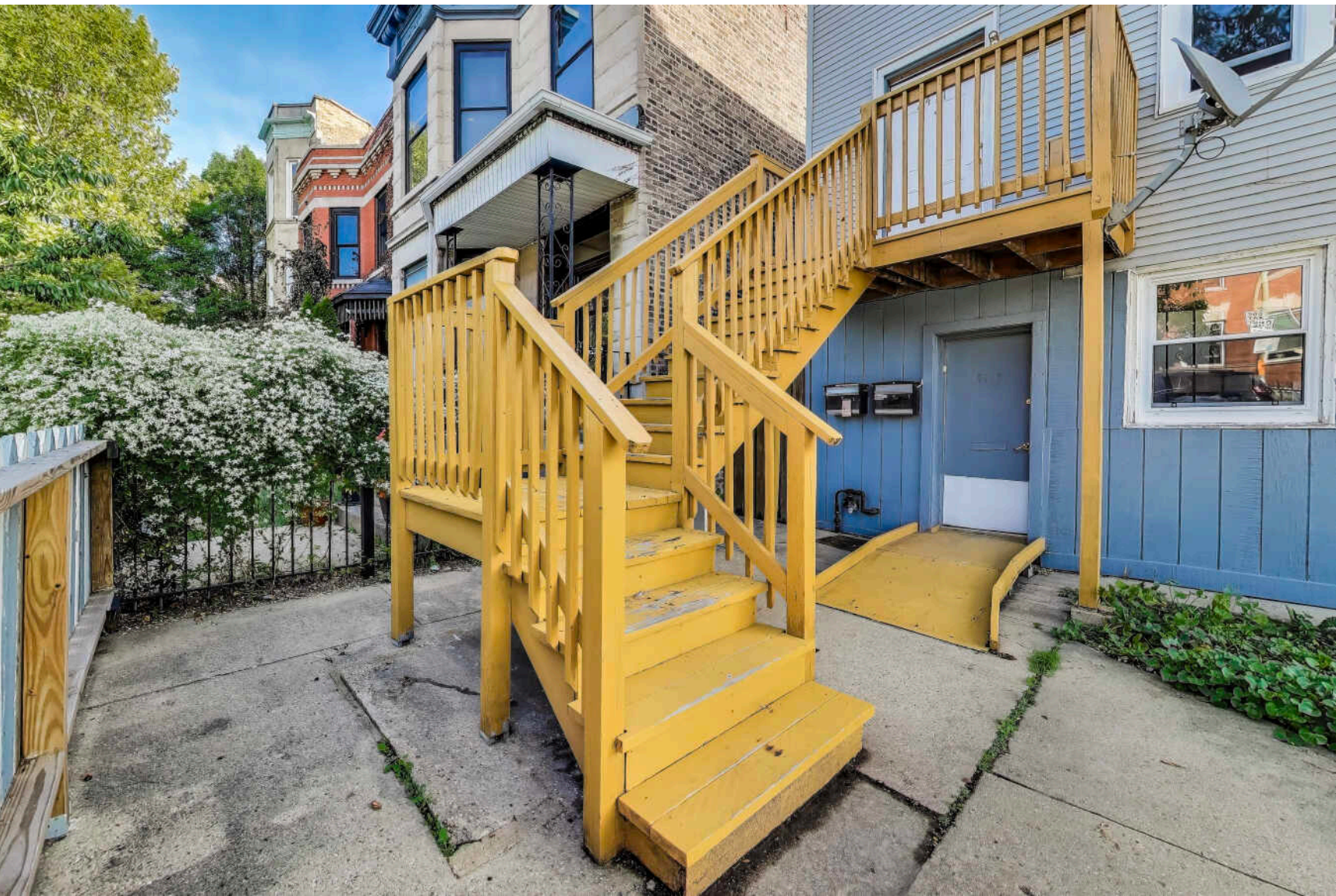


2417 N WASHTENAW AVENUE
LOGAN SQUARE





ROOM DIMENSIONS

BEDROOM : 12' × 10'

BEDROOM : 9' × 7'

LIVING ROOM : 17' × 13'

6 BEDROOM

3 BATH

TAXES: \$9,317

2417 N WASHTENAW, CHICAGO IL

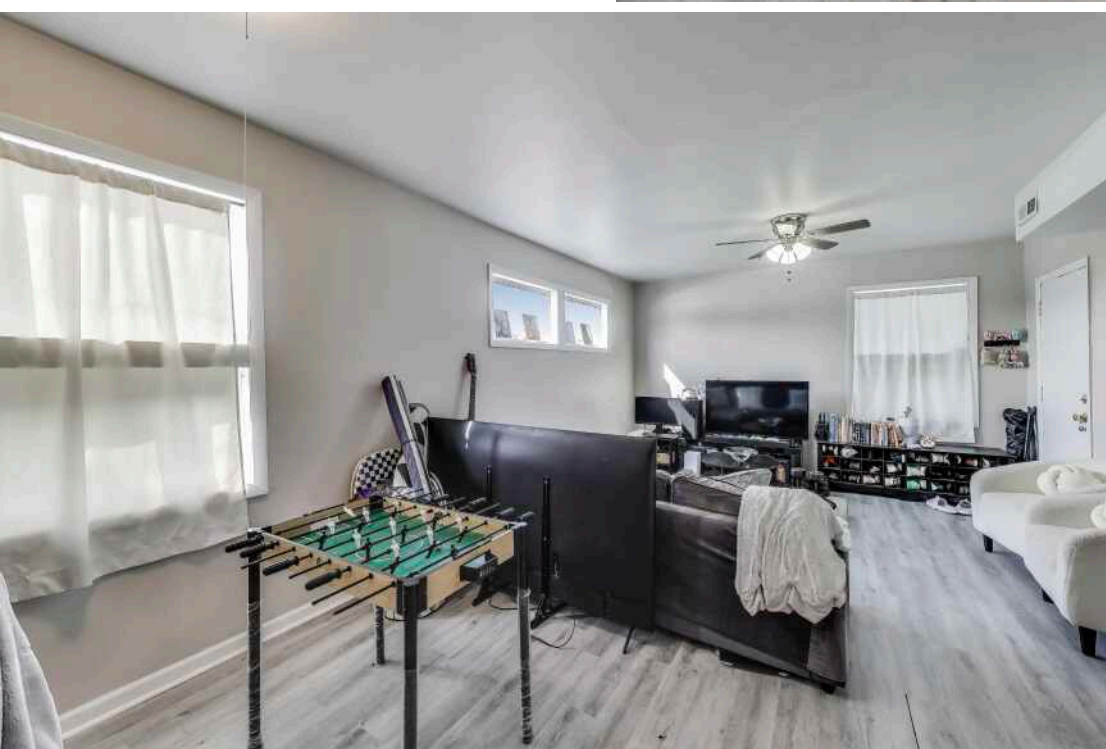
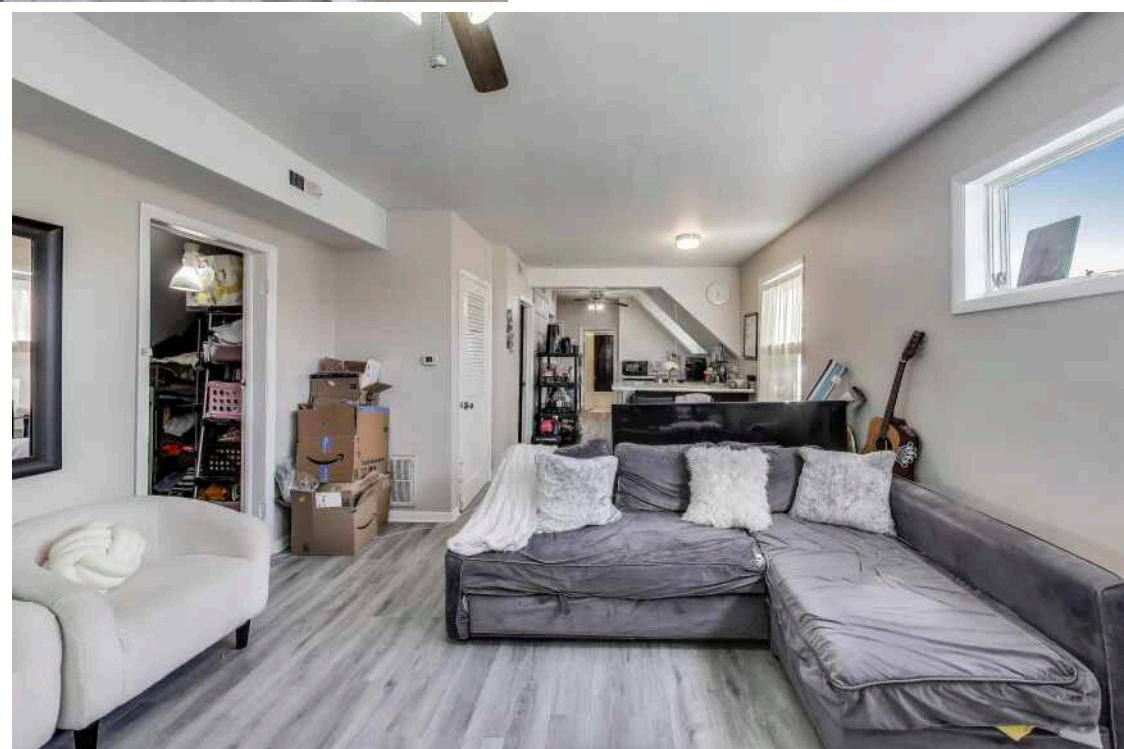
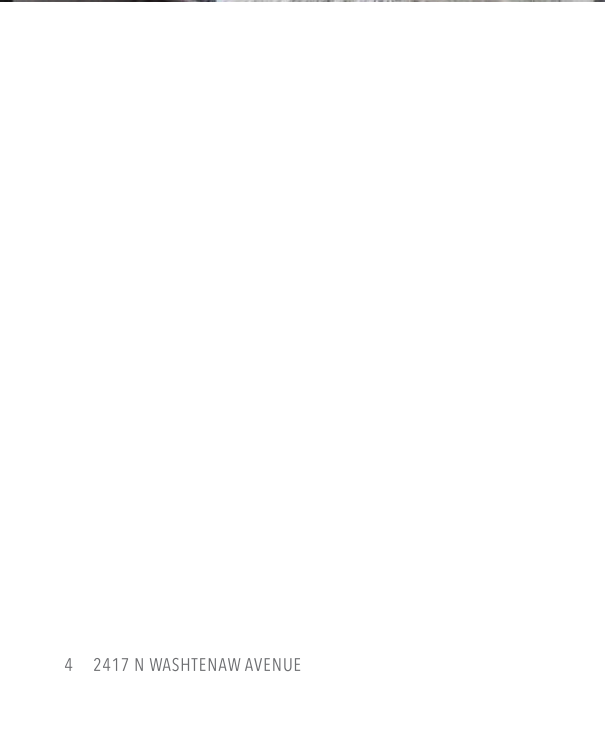
FABULOUS LOGAN SQUARE LOCATION!

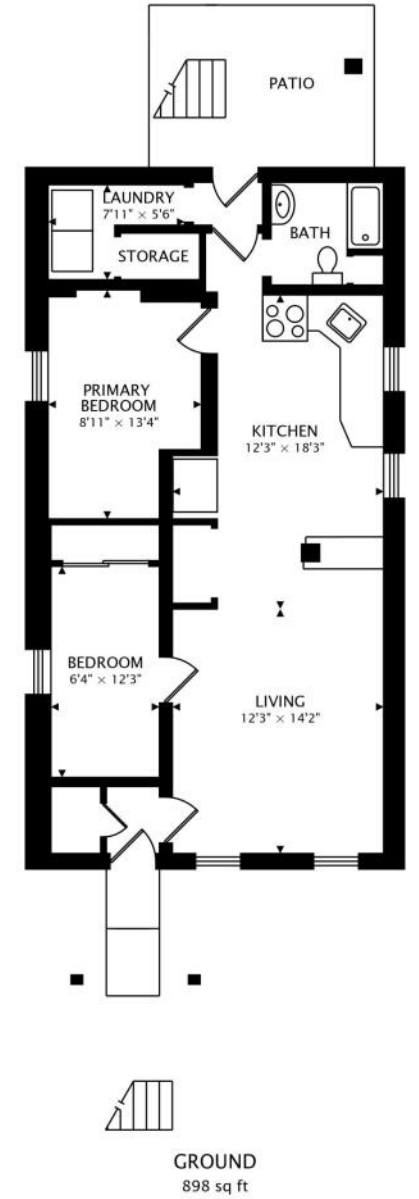
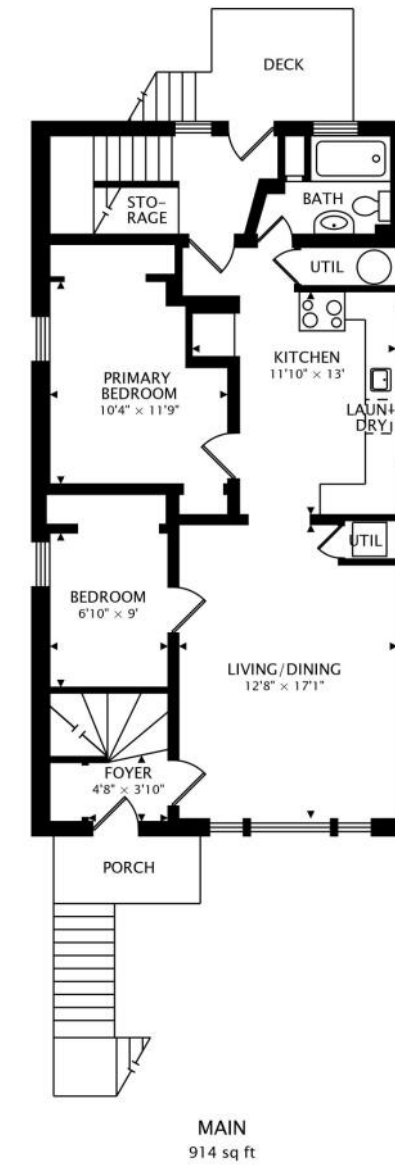
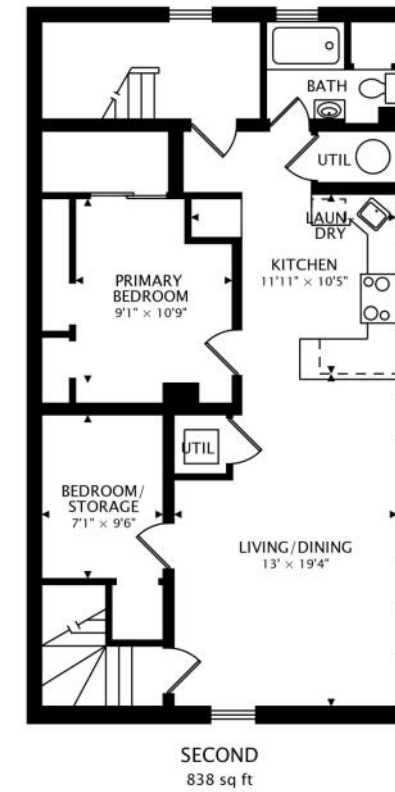
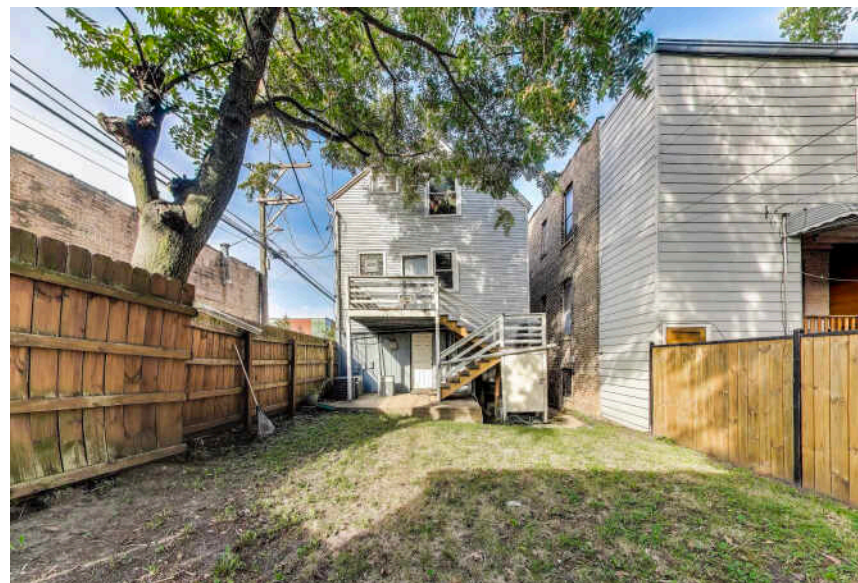
3 units, 6 bedrooms, 3 baths, and 2 car garage.

Leased building, Do NOT disturb tenants! Being sold as is. Contact listing Agent with any questions. Long time owners selling property in an estate.

3 Units, 6 Bedrooms, 3 Bathrooms, 2 Car garage, Excellent transportation.

- 3 Units
- 6 Bedrooms
- 3 Bathrooms
- 2 Car garage
- Excellent transportation







LOGAN SQUARE PROVES THAT IT IS HIP TO BE SQUARE AFTER ALL.

The neighborhood attracts residents with its artistic vibe, park-like boulevards, and thriving dining scene.

The Logan Square Boulevards District, lined with beautiful homes and mature trees, is a designated Chicago landmark.

Although it's surrounded by some of Chicago's trendiest areas for nightlife, the neighborhood definitely holds its own. Logan Square is home to locally-owned restaurants, bars, and bistros, including hotspots noted by *Bon Appétit* as among Chicago's best. Artists and musicians live and work in the neighborhood, performing and displaying their art at local coffee shops, cafes, and theaters.

Known for its historic greystones, large bungalows, and stately mansions, Logan Square has seen a boom of residential development, including condominiums, lofts, townhomes, three-flats, and single-family homes. While there is ample new construction, the community still retains its historic charm by repurposing and preserving its landmarks.

The neighborhood's easy access to the CTA Blue Line is another draw for residents along with The 606 trail.



NOTES

[illegible]



ERICH MUELLNER

847.361.7100

ERICHMUELLNER@ATPROPERTIES.COM



All specifications, features, designs, price, assessments, taxes and materials are subject to change without notice. Depicted floor plans and architectural renderings are only an artist's impression.

