



243 N WALNUT STREET  
ELMHURST

243 N WALNUT STREET · ELMHURST  
243NWALNUT.INFO



@properties | CHRISTIE'S  
INTERNATIONAL REAL ESTATE

LUXURY  
PORTFOLIO  
INTERNATIONAL



MARIA GRACIK BROKER

630.306.7882 mobile  
mariagracik@atproperties.com

MARIA  
GRACIK

DANA STEINECKER BROKER

847.804.2966 mobile  
630.530.0900 office  
dsteinecker@atproperties.com

**243 N WALNUT STREET • ELMHURST**  
243NWALNUT.INFO



@properties | CHRISTIE'S  
INTERNATIONAL REAL ESTATE

LP LUXURY  
PORTFOLIO  
INTERNATIONAL



# 243 N WALNUT STREET

## ROOM DIMENSIONS

Living Room .....	12'x11'
Family Room .....	21'x15'
Dining Room .....	14'x12'
Kitchen .....	15'x15'
Breakfast Room .....	15'x7'
Library .....	11'x11'
Foyer .....	9'x6'
Primary Bedroom .....	21'x18'
Second Bedroom .....	15'x13'
Third Bedroom .....	15'x14'
Fourth Bedroom .....	15'x12'
Laundry Room .....	14'x11'
Family Room .....	35'x26'
Bar .....	9'x6'

## FEATURES

Impeccable 4-5 bedroom just a short stroll from the heart of downtown Elmhurst. This meticulously maintained 2013 McGovern built home impresses the moment you approach the front door. Covered porch and a front patio welcome you, perfect for watching the kids play in the front while enjoying an evening beverage. The floorpan is wonderful for entertaining. Open concept kitchen and family room leading out to the private backyard oasis boasting patio with multiple seating areas, grill station and a fire pit. Work from home options include first floor office and a 5th bedroom in lower level currently used as workout room . Each of the 4 bedrooms on the second floor attached to a bathroom. Volume ceilings in all bedrooms. Primary bedroom is spacious with a luxury primary bath and large walk in closet with custom closet system. Walk to Hawthorne Elementary and Immaculate Conception. Elmhurst Library and Wilder Park just a few blocks away. Not just a home, this is a lifestyle.

- Lot Size 50 x 148
- 2022 property taxes \$23,519.06
- 3,519 square feet (above grade) finished basement 1,498 additional square footage.



**MARIA GRACIK** BROKER

630.306.7882 mobile  
mariagracik@atproperties.com

**DANA STEINECKER** BROKER

847.804.2966 mobile  
630.530.0900 office  
dsteinecker@atproperties.com













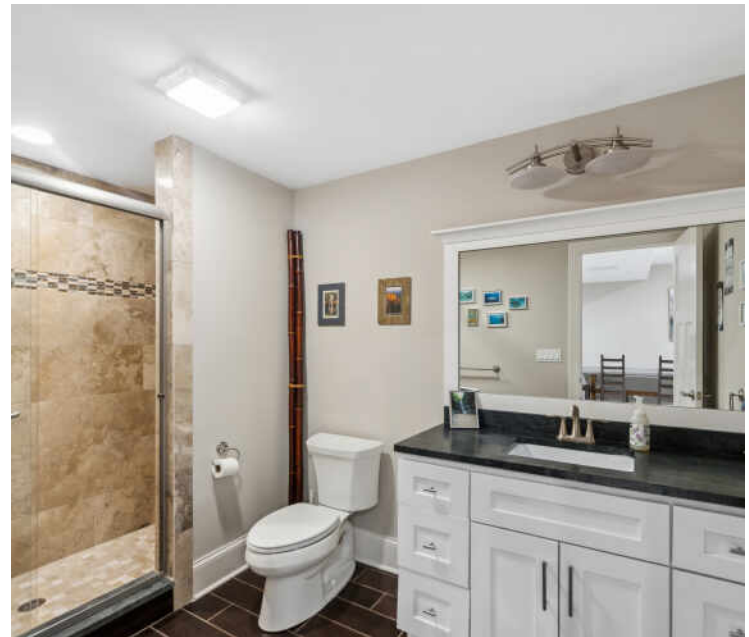








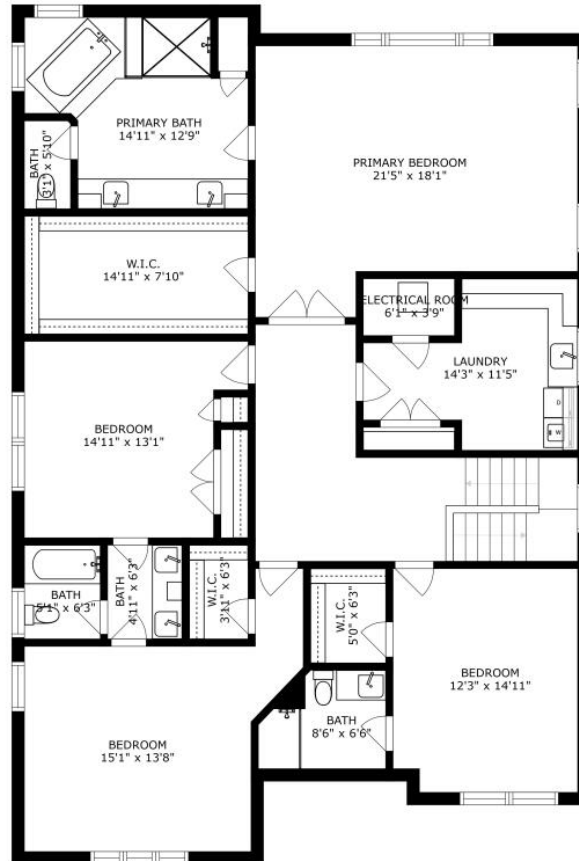




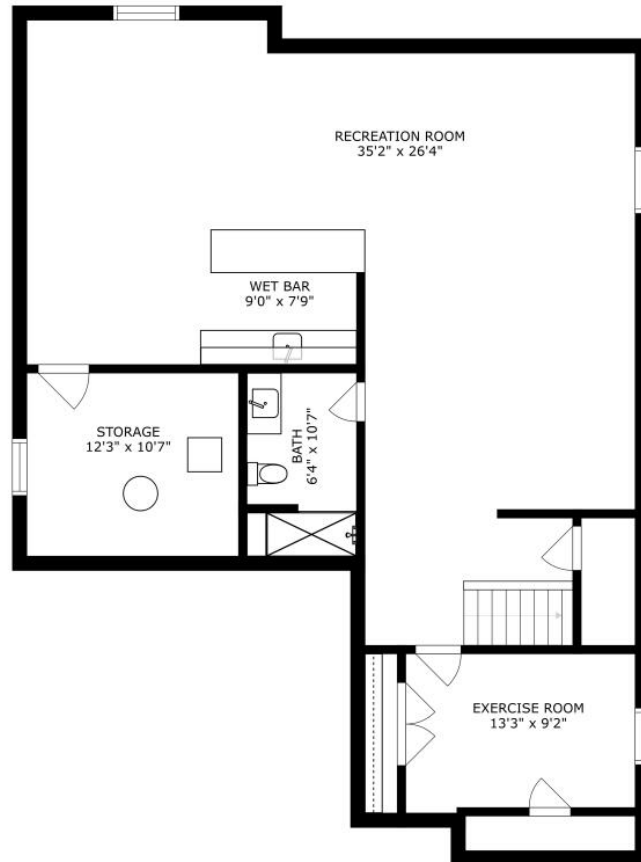




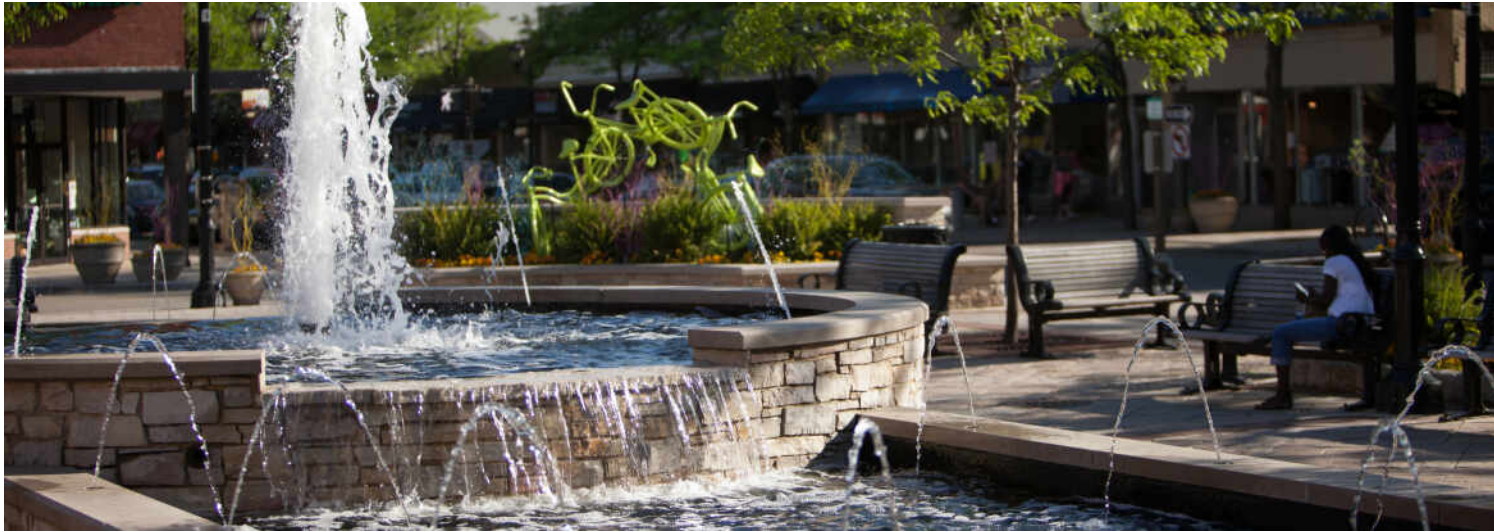
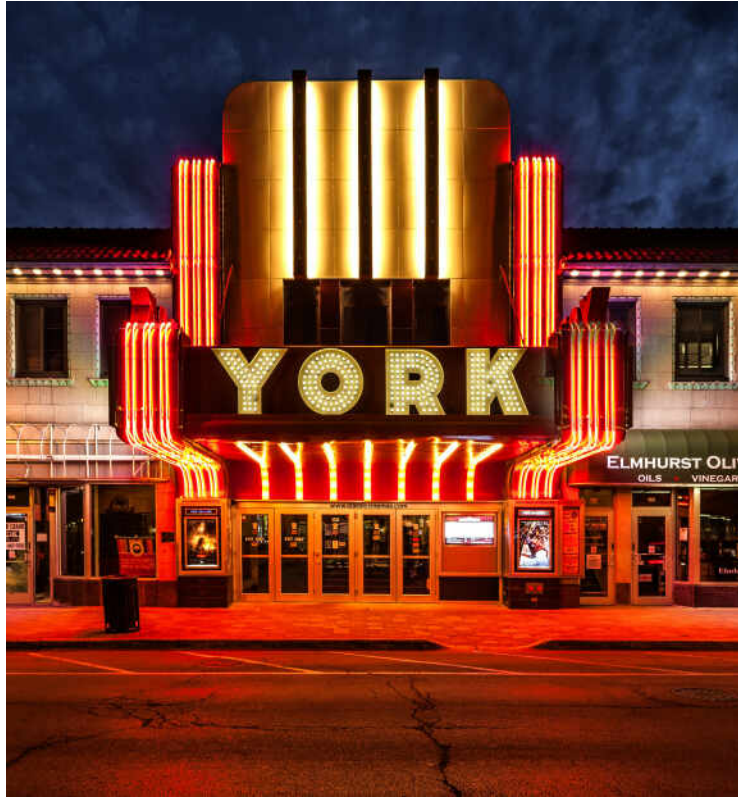
SIZES AND DIMENSIONS ARE APPROXIMATE, ACTUAL MAY VARY.



SIZES AND DIMENSIONS ARE APPROXIMATE, ACTUAL MAY VARY.



SIZES AND DIMENSIONS ARE APPROXIMATE, ACTUAL MAY VARY.



WITH A WEALTH OF SHOPS, RESTAURANTS, AND ARTS AND CULTURE, **ELMHURST** IS HOME TO MORE THAN 40,000 RESIDENTS WHO ENJOY EVERYTHING THIS VIBRANT COMMUNITY HAS TO OFFER.

*Locals love the esteemed museums, schools, and arts and culture that make Elmhurst a desirable place to call home. Downtown Elmhurst also beckons residents with an assortment of shopping and fine dining, a movie theater, and engaging community events.*

Elmhurst's award-winning park district maintains nearly 30 parks as well as trails, playgrounds, and athletic facilities. At the center of town is Wilder Park, where locals will also find the community's public library, Wilder Mansion, the Wilder Park Conservatory, and the Elmhurst Art Museum. The museum has been named the "Best Suburban Art Museum in Chicago" by *Chicago* magazine and is adjacent to the McCormick House, a rare single-family home designed by Mies van der Rohe.

Elmhurst is also home to the Elmhurst History Museum, Elmhurst Symphony Orchestra, GreenMan Theatre Troupe, Elmhurst Choral Union, and Elmhurst Children's Theatre.

In addition to its many cultural offerings, the city is known for its bustling shopping and dining scene. Elmhurst's City Centre boasts a movie theater, an assortment of eateries and boutiques, and community events such as the annual Rock the Block Party. The Elmhurst Express Trolley connects downtown Elmhurst with the community's other shopping areas, including the Spring Road and York & Vallette business districts. The Trolley is free and runs during the summer and holiday season.

Residents come together for dozens of community events that are held throughout the year. The Memorial Day Parade has taken place every year since its start in 1918 and the annual St. Patrick's Day Parade is the third largest in the Chicagoland area.

With its proximity to O'Hare International Airport, the Tri-State Tollway, and the Eisenhower Expressway, Elmhurst offers convenient transportation options. A Metra train station is also located in town, providing easy access to downtown Chicago.





@properties® | CHRISTIE'S  
INTERNATIONAL REAL ESTATE

*Leading* REAL ESTATE  
COMPANIES  
OF THE WORLD®

LP  
LUXURY  
PORTFOLIO  
INTERNATIONAL

