

244 ELM STREET
GLENVIEW

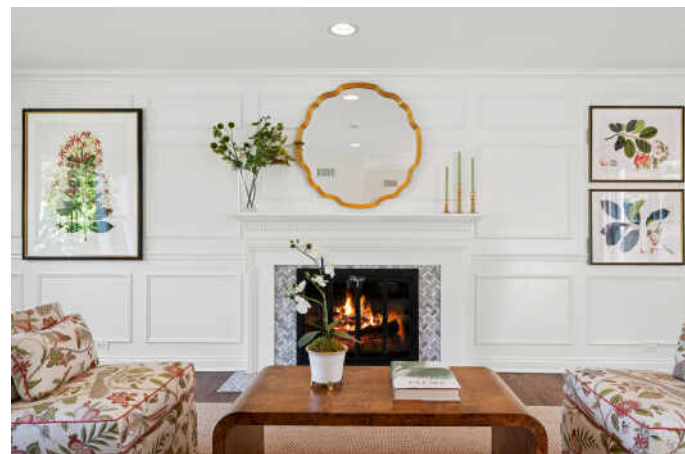


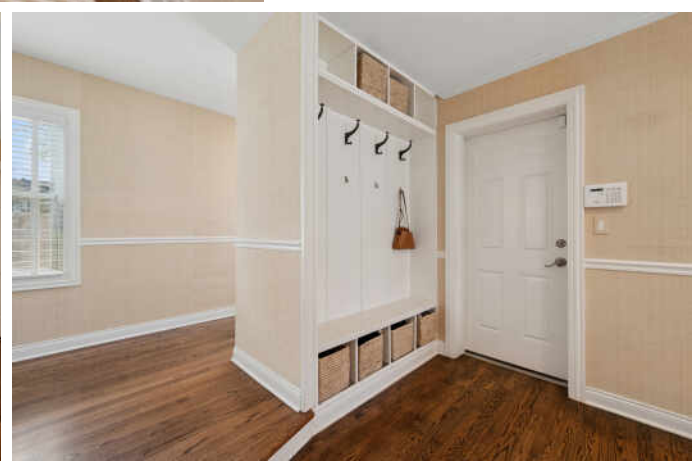
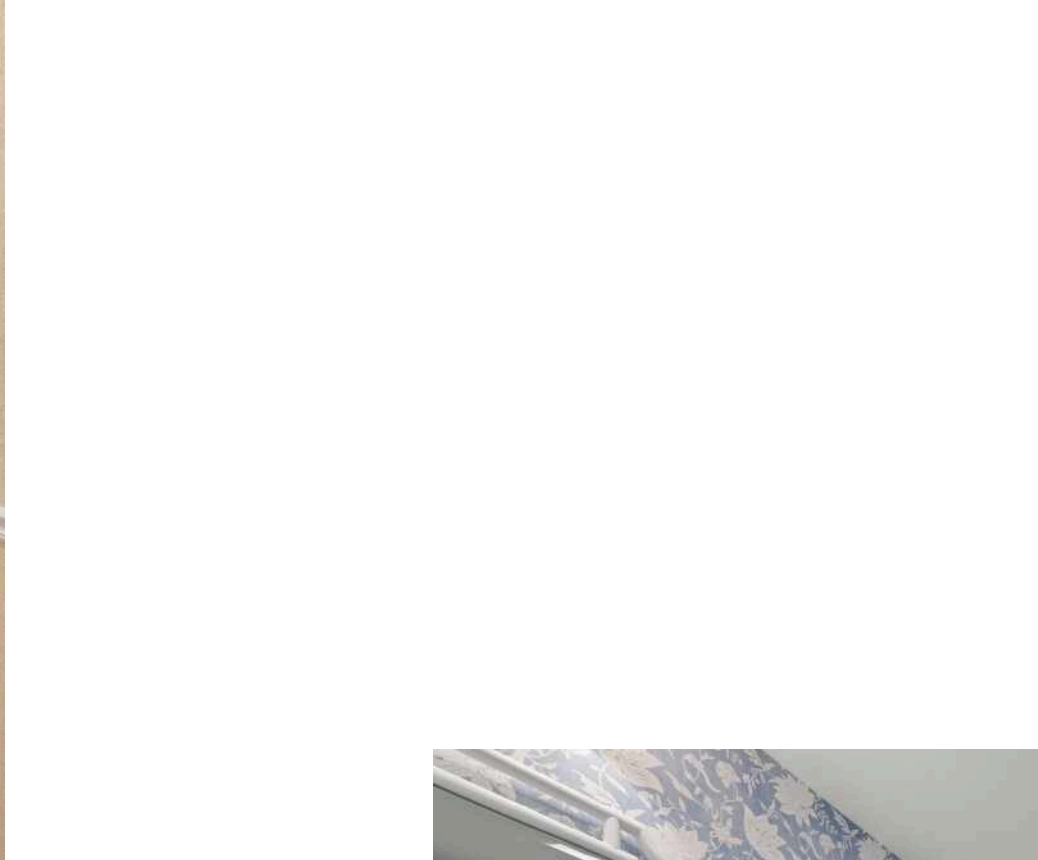


5 BEDROOM
3 BATH
TAXES: 15,952

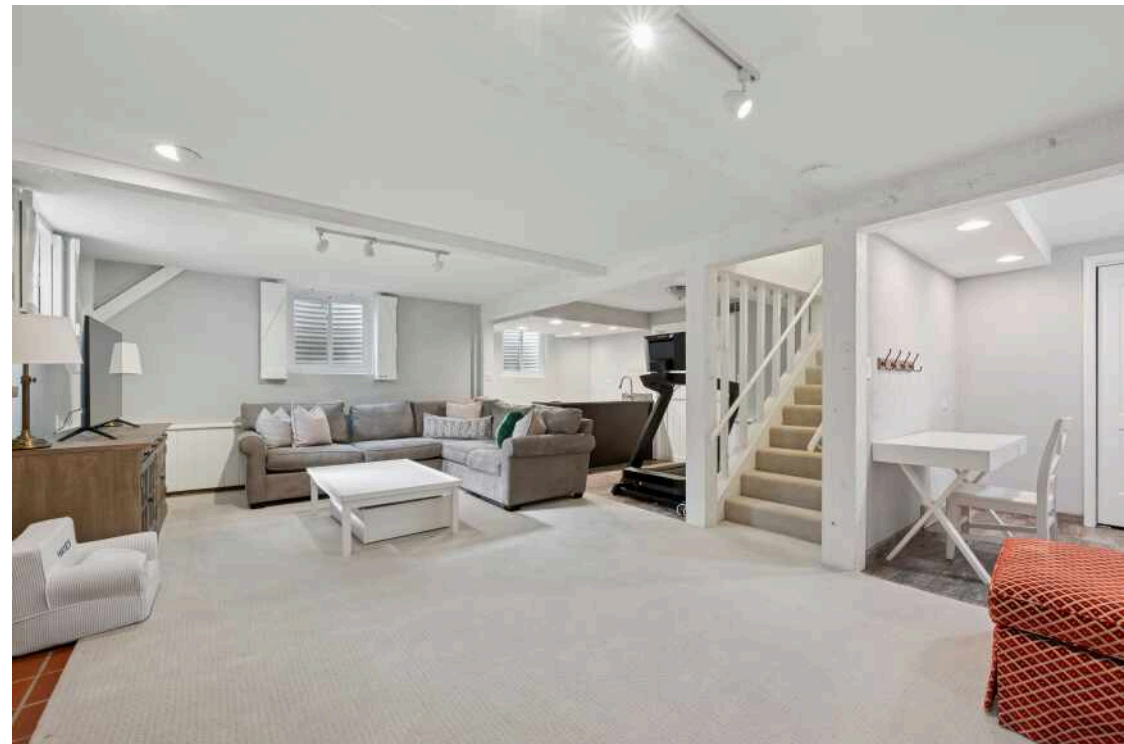
GLENVIEW GEM ON ELM

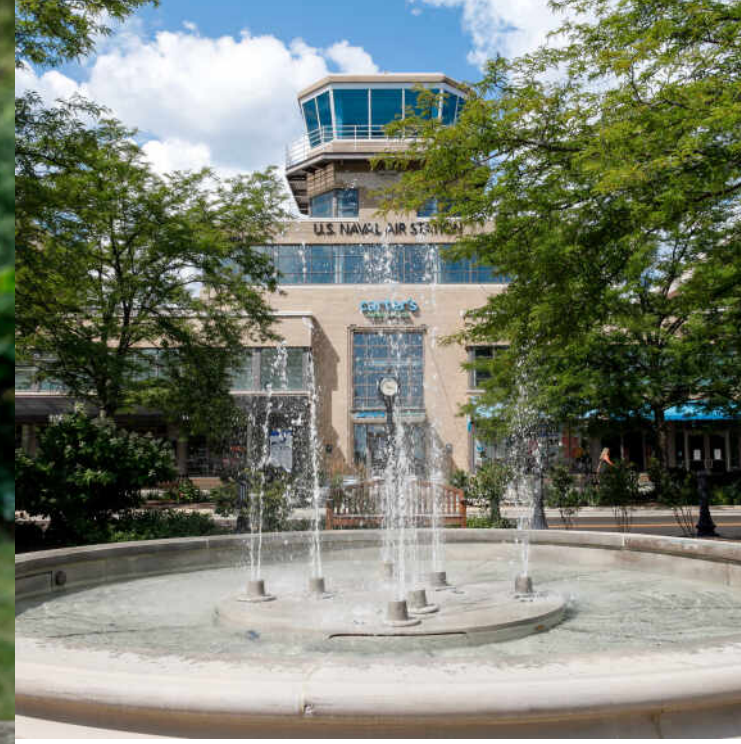
Welcome to 244 Elm Street in Glenview - a beautifully updated Cape Cod that combines thoughtful design with modern convenience. This meticulously maintained home features designer finishes throughout along with major updates, including a new roof, new sewer line, and newer windows. The flexible floor plan includes a main-level bedroom or office with a full bath, perfect for guests or remote work. A spacious living room with wood-burning fireplace and an adjacent dining area provide comfortable entertaining space. The updated kitchen and family room feature grasscloth wallpaper, custom window treatments, and built-ins, creating a cozy, inviting atmosphere. A mudroom with direct access to the attached garage and easy walkout to the spacious porch and backyard add convenience and functionality. Upstairs you'll find four well-appointed bedrooms and two full baths, including a primary suite with a private bath, walk-in closet, and additional closet space. The finished basement offers a large recreation area with fireplace and wet bar, new carpet, and abundant storage. Additional highlights include entire exterior brick painted, refinished hardwood flooring, two sets of washer/dryers, updated kitchen hardware, new light fixtures, refreshed carpet, and fresh paint throughout. Situated in the heart of Glenview, this home offers easy access to top-rated schools, parks, shopping, and transportation.











JUST 20 MILES FROM DOWNTOWN CHICAGO, **GLENVIEW** IS A DESTINATION IN ITS OWN RIGHT.

The scenic North Shore town has expanded rapidly thanks to its established neighborhoods, convenient access to transportation, and array of amenities.

More than 45,000 people call Glenview home, with properties ranging from townhomes and condominiums to luxury custom homes featuring the latest amenities. Newer homes can also be found at The Glen, a large development on the site of the former Glenview Naval Air Station that offers an assortment of shops and restaurants, a movie complex, the Kohl Children's Museum, and access to one of the town's two Metra stations.

Glenview is served by a number of public and private schools, including Glenbrook South High School, ranked among the top in the nation according to Business Insider.

The Glenview Park District offers indoor and outdoor pools, golf courses, soccer fields, nature trails, an ice center, tennis club, and multi-purpose community center.

In addition to modern development, Glenview celebrates and preserves its early days with two notable attractions: Wagner Farm and The Grove. A 20-acre working farm, Wagner Farm has hands-on programs - horseback riding, tractor driving, and other activities - that reflect a day in the life of a 1920s farmer. The Grove, a National Historic Landmark, includes a prairie, nature trails, historic buildings, and a log cabin that dates back to the 1850s.



© VHT STUDIOS

NOTES



ANNIE FLANAGAN

(847) 867-9236

847-881-0200

ANNIEFLANAGAN@ATPROPERTIES.COM



MADELINE FLANAGAN

312-543-7853

(847) 881-0200

MADDIEFLANAGAN@ATPROPERTIES.COM

