



245 MEADOWBROOK LANE HINSDALE



245 MEADOWBROOK LANE • HINSDALE



**BRYAN BOMBA** BROKER

630.286.9242 mobile  
 bryan@bryanbomba.com  
 www.hinsdalearearealestate.com



245 MEADOWBROOK LANE • HINSDALE





**245 MEADOWBROOK LANE** THE PERFECT BLEND OF PRIVACY, PLAY, AND PROXIMITY  
—RIGHT IN THE HEART OF HINSDALE

**ROOM DIMENSIONS**

Foyer .....	9'x13'
Living Room .....	15'x17'
Dining Room .....	13'x15'
Kitchen .....	13'x22'
Breakfast Nook .....	12'x22'
Sun Room .....	25'x13'
Family Room .....	20'x21'
Office .....	12'x11'
Primary Bedroom .....	24'x22'
Bedroom Two .....	11'x12'
Bedroom Three .....	19'x13'
Bedroom Four .....	14'x26'
Bedroom Five .....	13'x14'
Recreation Room .....	36'x29'
Exercise Room .....	25'x19'

**FEATURES**

Tucked away on one of the few cul-de-sacs in Hinsdale. An easy one block walk to Elm school-on sidewalks all the way. Very walkable to Hinsdale Central High School. This is an impressively large home, with 4400+-square feet of above ground area plus another 2000+- finished lower level space totaling 6400SF in all. Three car attached garage. Five second floor bedrooms. A mud room so large you thought it only existed in your dreams. First floor laundry. First floor office. This lot is unique in that it is very uncommon to get this much privacy, play and recreation space-all of this is the result of an atypically wide lot (120 feet - the typical lot in Hinsdale is 50 feet wide).

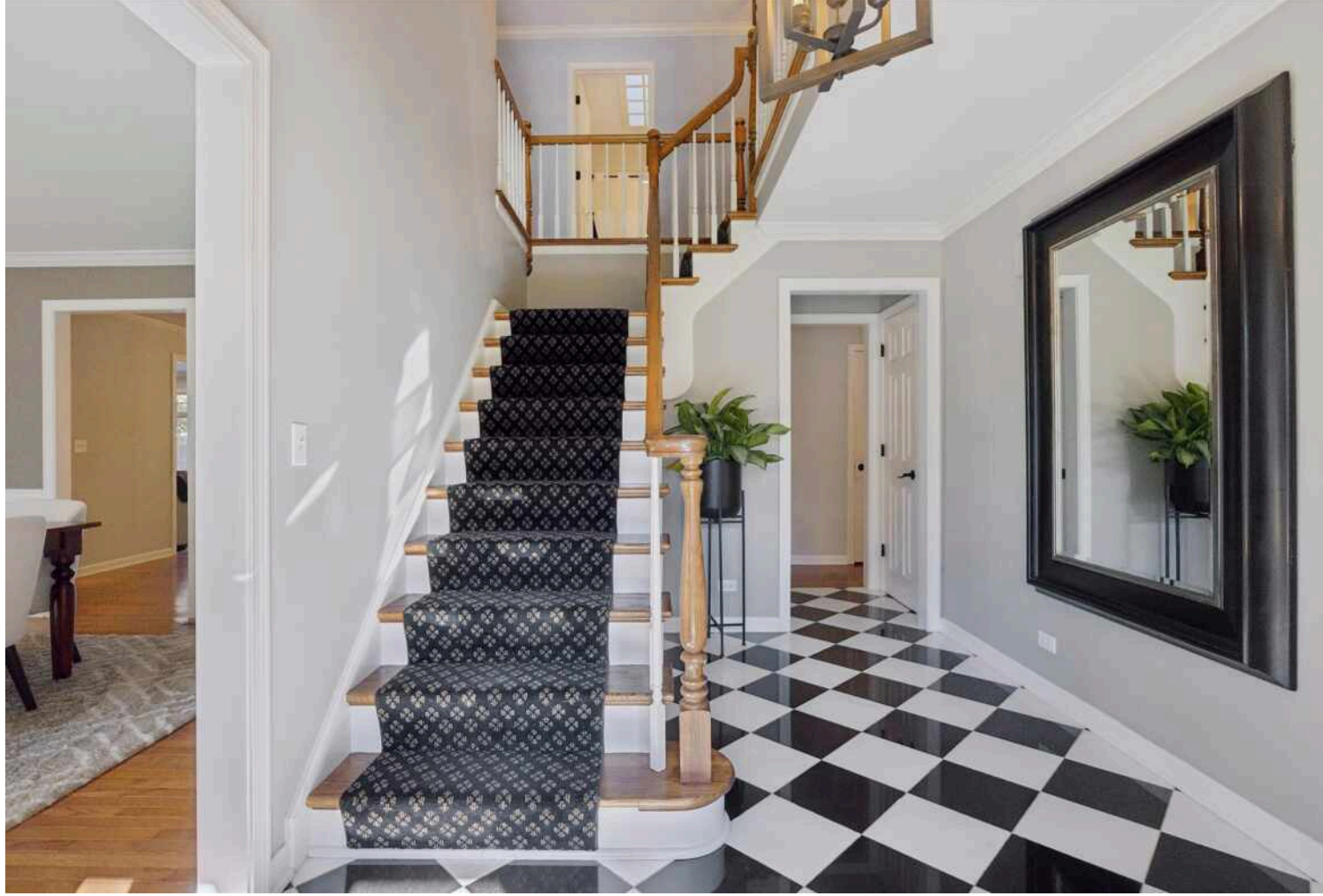


**BRYAN BOMBA** BROKER

630.286.9242 mobile

bryan@bryanbomba.com  
www.hinsdalearearealestate.com











































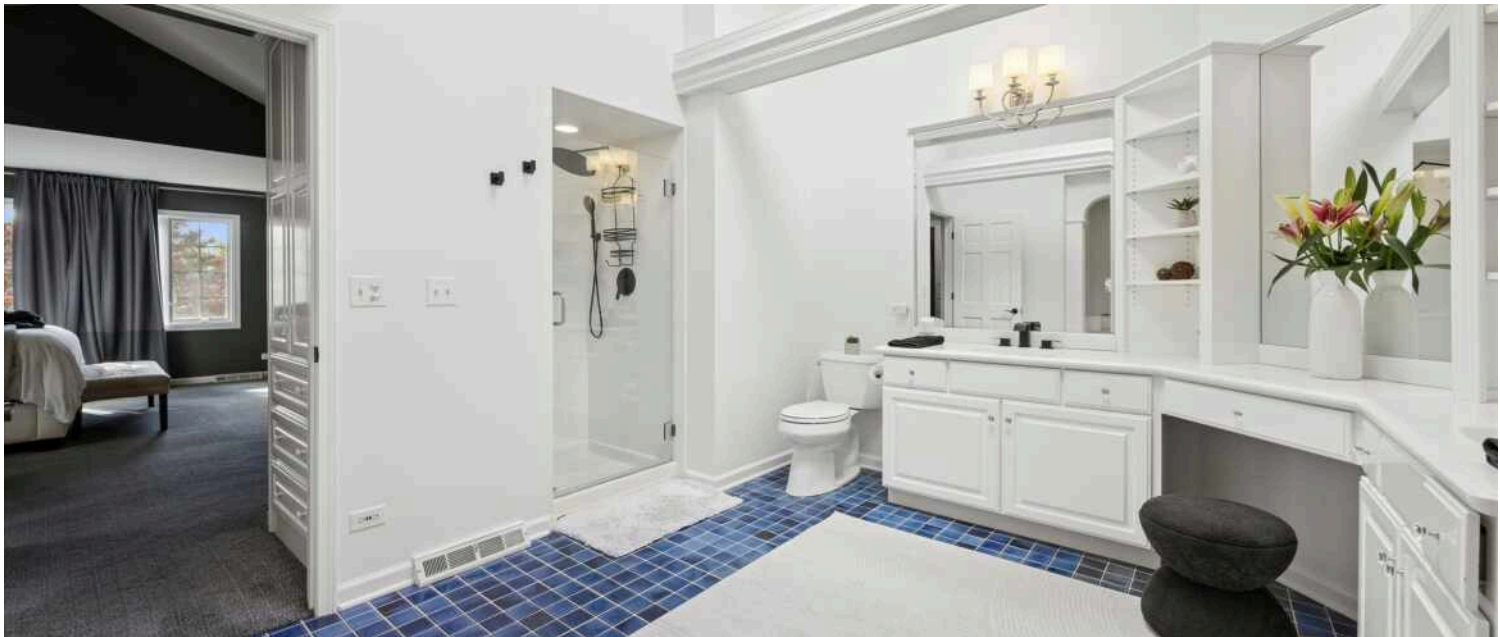
























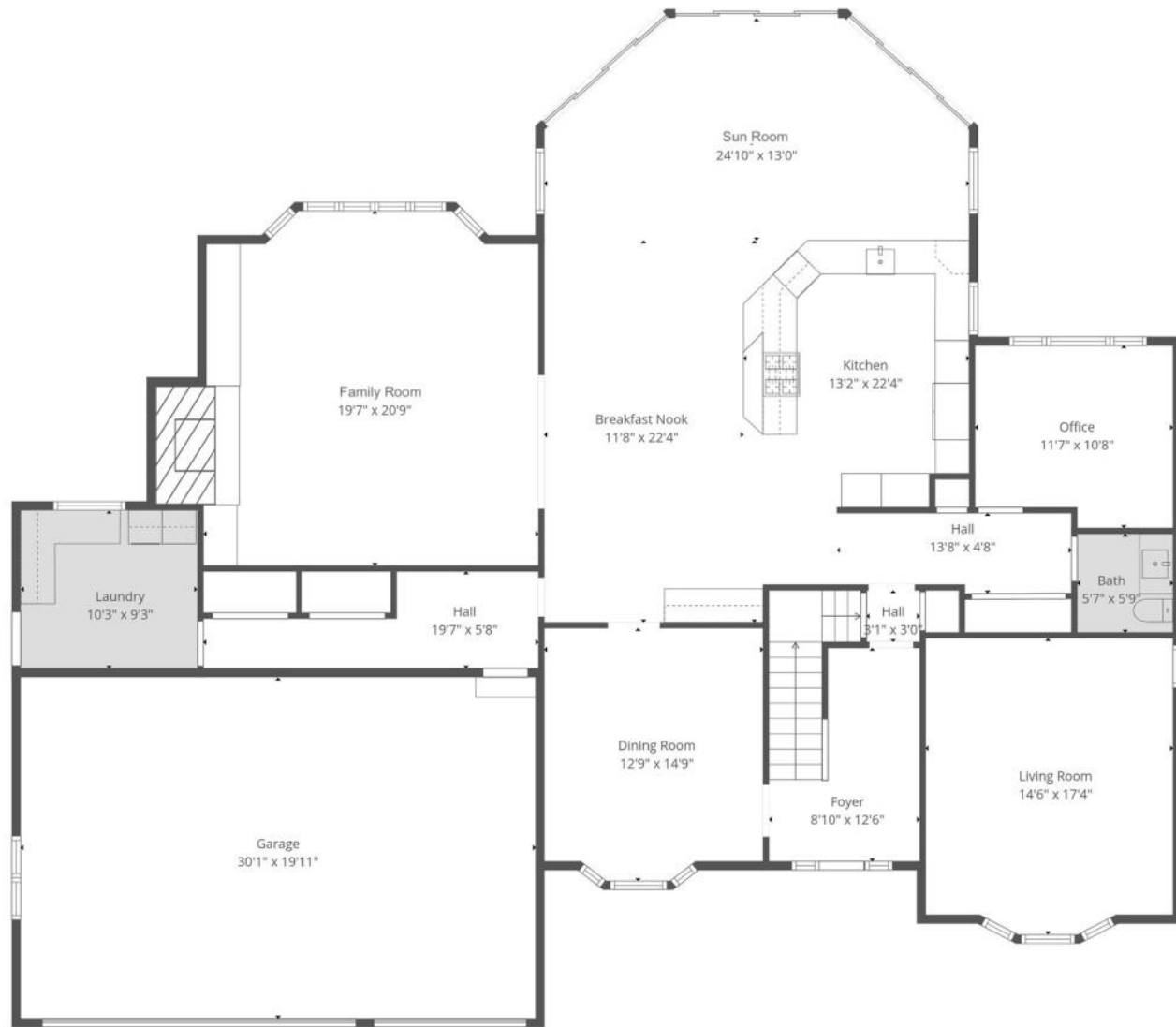




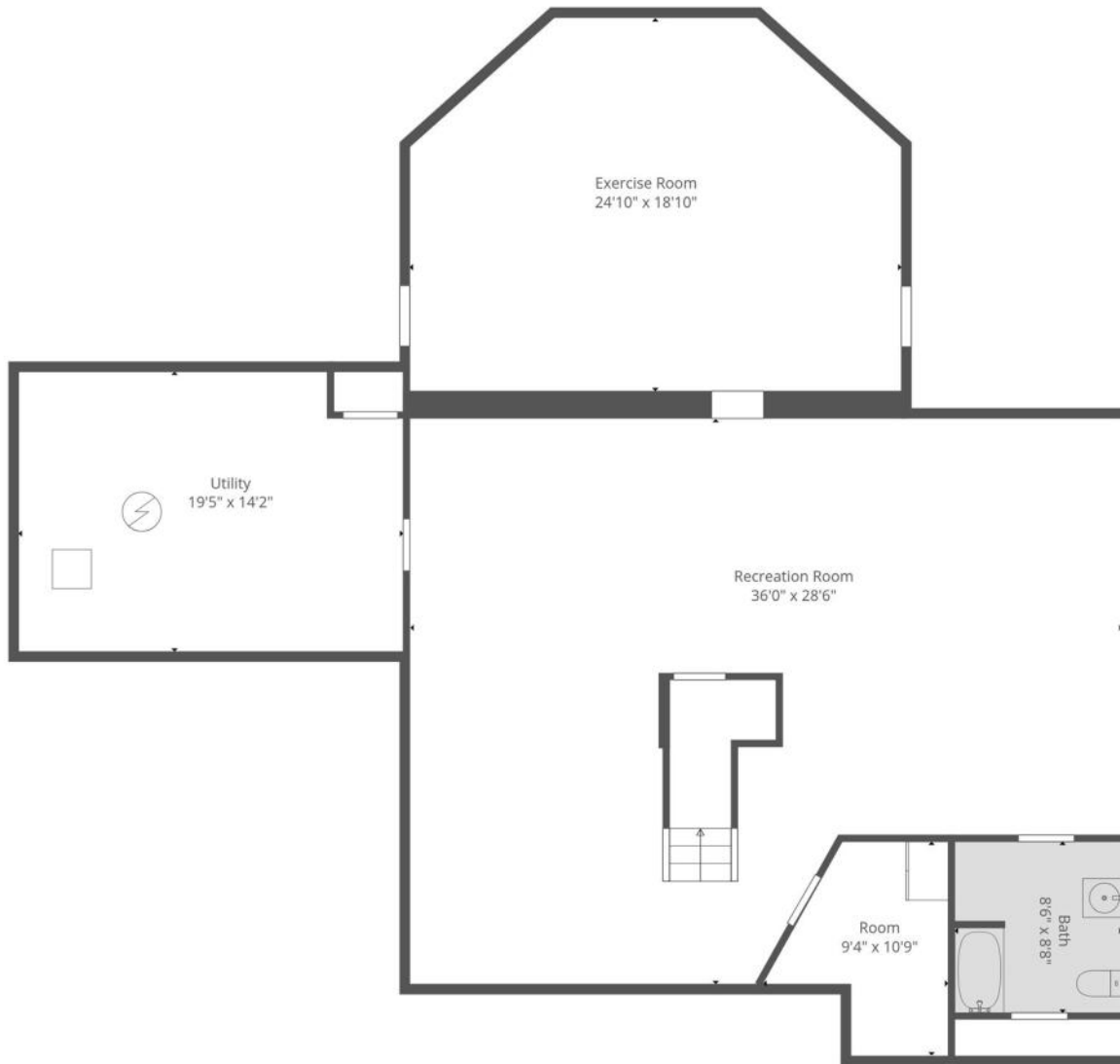




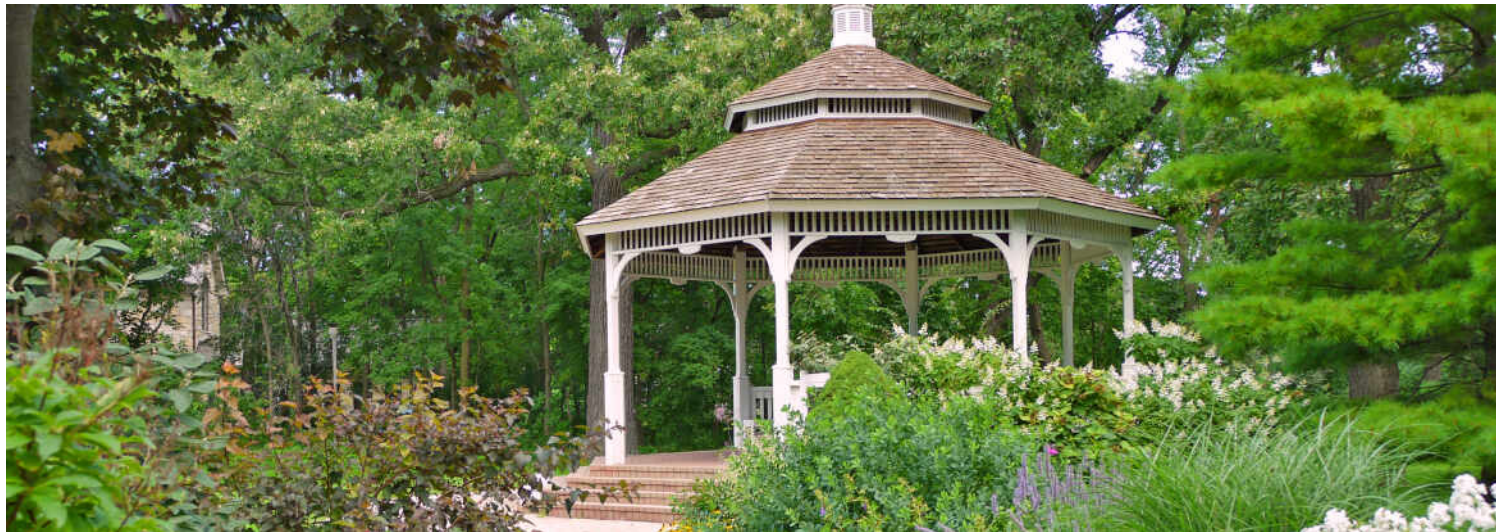












**HINSDALE'S** HISTORIC DOWNTOWN AND BEAUTIFUL HOMES ATTRACT SOME OF THE STATE'S MOST AFFLUENT RESIDENTS, EARNING THE SUBURB ITS RANKING AS ONE OF THE WEALTHIEST ZIP CODES IN ILLINOIS.

*Locals love the natural beauty and historic elegance of Hinsdale, which boasts a number of scenic parks and architectural landmarks.*

Downtown Hinsdale offers a step back in time. The downtown district is on the National Register of Historic Places, with several historic buildings dating back to before the community was incorporated in the 1870s. Residents and visitors will also find award-winning restaurants that will satisfy any palate along with a variety of shops, from jewelry stores and upscale boutiques to craft shops and more.

The community has a wealth of amenities such as the Hinsdale Community Swimming Pool, Katherine Legge Memorial Park, and Burlington Park, which is home to various annual events including the farmers market, Fine Arts Festival, and Uniquely Thursdays concert series. There are also numerous parks and athletic facilities for those who enjoy sports like tennis, baseball, and soccer.

Hinsdale has easy access to the Tri-State Tollway, Stevenson Expressway, and three train stations along Metra's BNSF Railway.









@properties® | CHRISTIE'S  
INTERNATIONAL REAL ESTATE

*Leading* REAL ESTATE  
COMPANIES  
OF THE WORLD®

LP  
LUXURY  
PORTFOLIO  
INTERNATIONAL®

