

2462 BRUNSWICK CIRCLE #A  
WOODRIDGE





3 BEDROOM  
1.1 BATH  
TAXES: \$4,558  
ASSESSMENTS: \$266 / MONTH

Secluded updated 3 Bedroom, 1.1 Bathroom Townhome

Open space concept inviting bright living room fireplace and custom mantels A separate dining room , updated kitchen 42" cabinetry. with ample storage throughout,

Large 3 bedrooms great sizes, have custom closet organizers,

Bathroom is fantastic, with an extra deep heated jet tub, and custom lighting.

Enjoy evening entertaining, endless summer nights your private back deck.

This home has an attached single car garage and also has additional storage under the stairs & a pull down attic in the attached garage

We are in the Downers Grove North High School district.

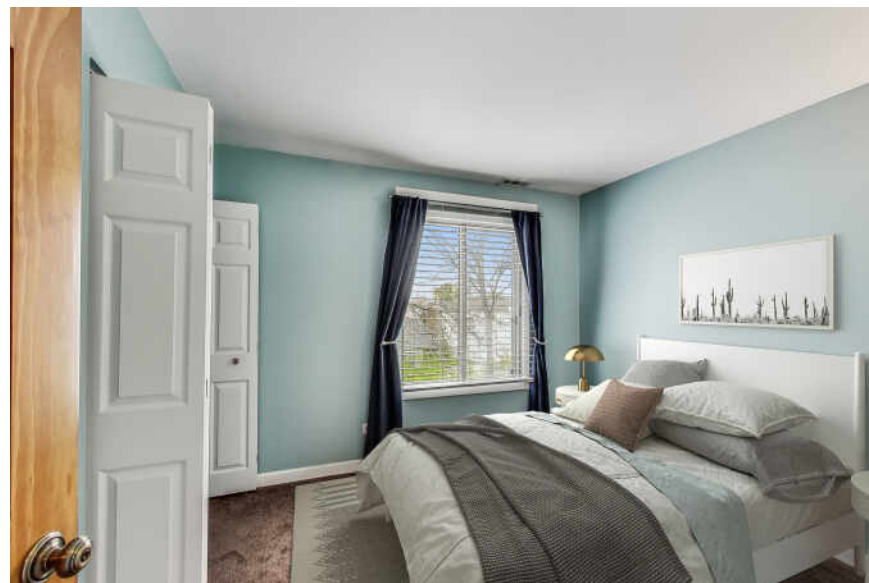
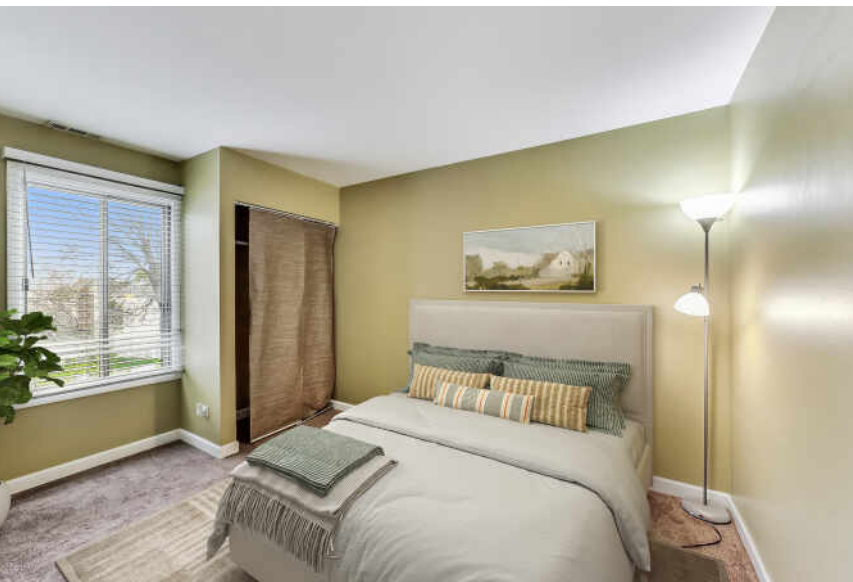
A MUST SEE!! Enjoy your living in Woodridge and the surrounding suburbs, close to restaurants, park district, shopping, and 10 mins drive to METRA for commuting.

No rental allowed in complex.

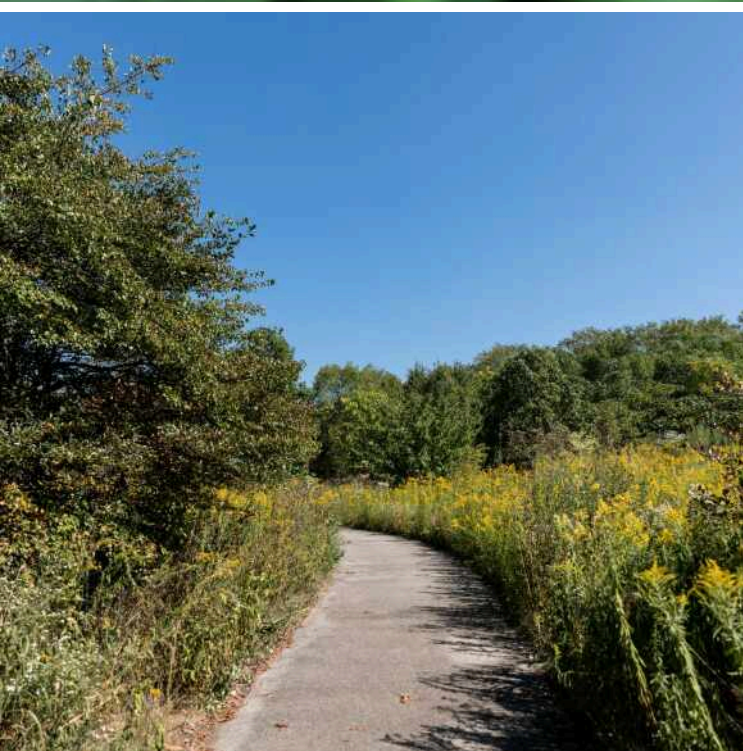












RICH IN NATURAL BEAUTY, **WOODRIDGE** IS A GROWING AND VIBRANT COMMUNITY LOCATED IN THE SOUTHWEST SUBURBS OF CHICAGO.

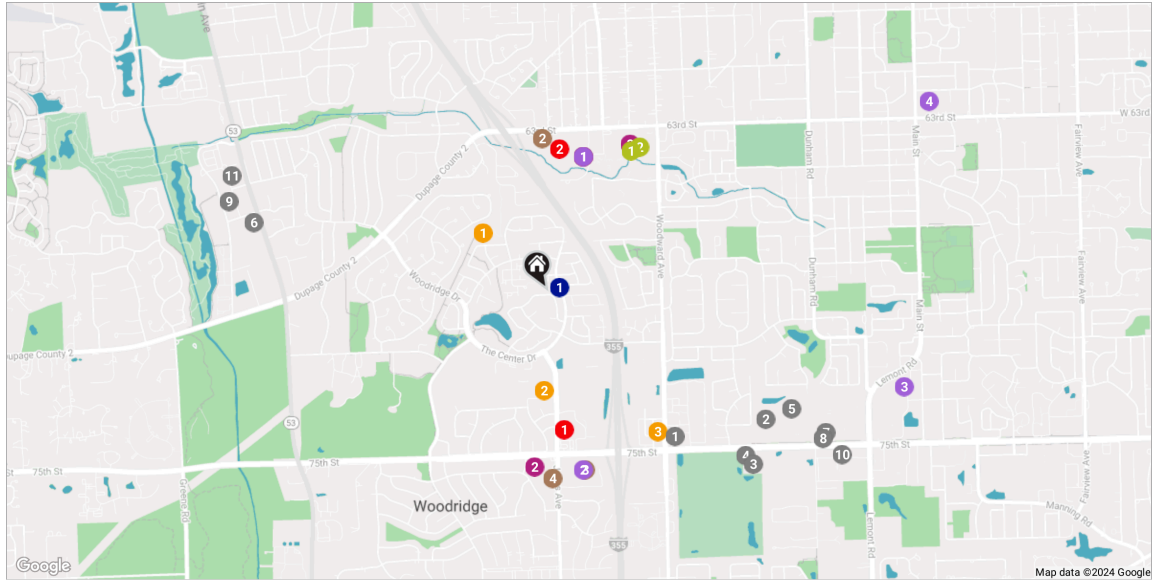
Residents enjoy several parks and wide-open spaces, including a water park, 18-hole golf course, skate park, recreation center, as well as various bike paths, picnic facilities, and sports fields.

Woodridge is also home to several corporate headquarters. Since the late 70s, it has continued to thrive as a business community.

Two interstates run through Woodridge, including the Veterans Memorial Tollway (I-355) and the Stevenson Expressway (I-55). Commuter rail service is accessible in nearby Lisle and Downers Grove.

The majority of Woodridge secondary school students are served by Community High School District 99 schools, including Downers Grove North or South High Schools. Some students are served by Lemont District 210 or Naperville schools in District 203.





#### RESTAURANTS

- 1 Pizza Hut  
7451 WOODWARD AVENUE STE 107,  
0.9 MI
- 2 Shikara Restaurant  
1620 75TH STREET, 1.2 MI
- 3 Bowlero Woodridge  
1555 75TH STREET, 1.2 MI
- 4 Nonnies Pizza  
1565 75TH STREET, 1.2 MI
- 5 Sushi City  
1510A 75TH STREET, 1.3 MI
- 6 Clara's  
6550 ILLINOIS 53, 1.4 MI
- 7 Gong Ho Restaurant  
1338 75TH STREET, 1.4 MI
- 8 Chili's Grill & Bar  
1330A 75TH STREET, 1.4 MI
- 9 Cinemark Seven Bridges  
and IMAX  
6500 ILLINOIS 53, 1.5 MI
- 10 Carrabba's Italian Grill  
1001 75TH STREET, 1.6 MI

- 11 Jam n' Jelly Cafe  
6435 MAIN STREET, 1.6 MI

#### COFFEE

- 1 Starbucks  
2333 63RD STREET, 0.6 MI
- 2 Thorntons  
2401 63RD STREET, 0.7 MI
- 3 Starbucks  
2317 75TH STREET, 0.8 MI
- 4 UNIKOKO Dessert & Bubble  
Tea  
7526 JANES AVENUE, 0.9 MI

#### SHOPPING

- 1 Target  
2333 63RD STREET, 0.6 MI
- 2 Walgreens  
2501 75TH STREET, 0.8 MI
- 3 Bombay Bazar  
2093 63RD STREET, 0.8 MI

#### GROCERY

- 1 Target Grocery  
2333 63RD STREET, 0.6 MI
- 2 Jewel-Osco  
2317 75TH STREET, 0.8 MI
- 3 Shop & Save Market  
7241 LEMONT ROAD, 1.7 MI
- 4 Jewel-Osco  
6215 MAIN STREET, 2.0 MI

#### GYM

- 1 Counterstrike MMA  
Academy  
2081 63RD STREET, 0.8 MI
- 2 Planet Fitness  
2055 63RD STREET, 0.8 MI

#### MEDICAL

- 1 Woodgrove Medical  
Professional Center  
7425 JANES AVENUE, 0.6 MI

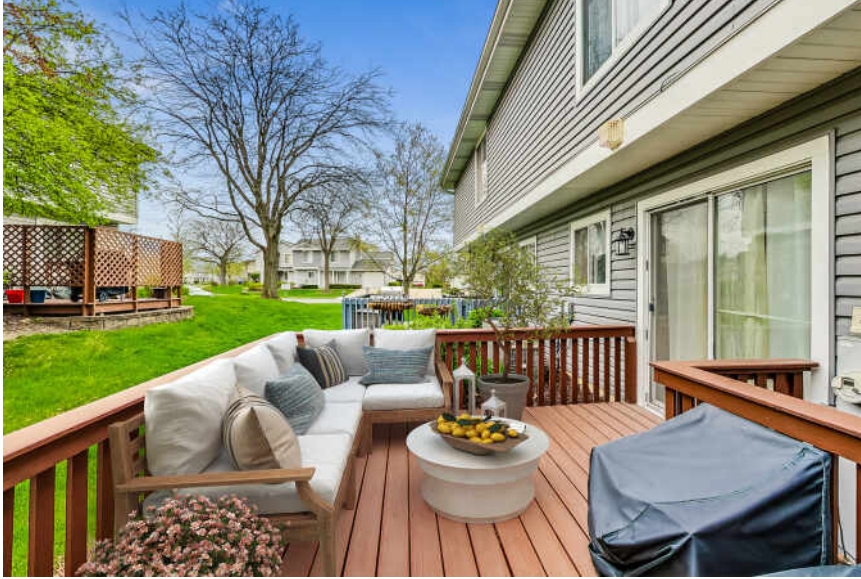
- 2 UChicago Medicine  
AdventHealth Medical  
Group Behavioral Health at  
Woodridge  
2363 63RD STREET, 0.7 MI

#### SCHOOLS

- 1 Meadowview Elementary  
School  
2525 MITCHELL DRIVE, 0.4 MI
- 2 Thomas Jefferson Junior  
High School  
7200 JANES AVENUE, 0.5 MI
- 3 Woodridge South  
KinderCare  
7450 WOODWARD AVENUE, 0.8 MI

#### TRANSIT

- 1 Janes/Goldfinch  
UNITED STATES, 0.1 MI





**JOHN MCHATTON**

(312) 497-2918

JOHNMCHATTON@ATPROPERTIES.COM



All specifications, features, designs, price, assessments, taxes and materials are subject to change without notice. Depicted floor plans and architectural renderings are only an artist's impression.

