



24 LONGMEADOW ROAD WINNETKA



24 LONGMEADOW ROAD · WINNETKA

@properties | CHRISTIE'S  
INTERNATIONAL REAL ESTATE

LP LUXURY  
PORTFOLIO  
INTERNATIONAL

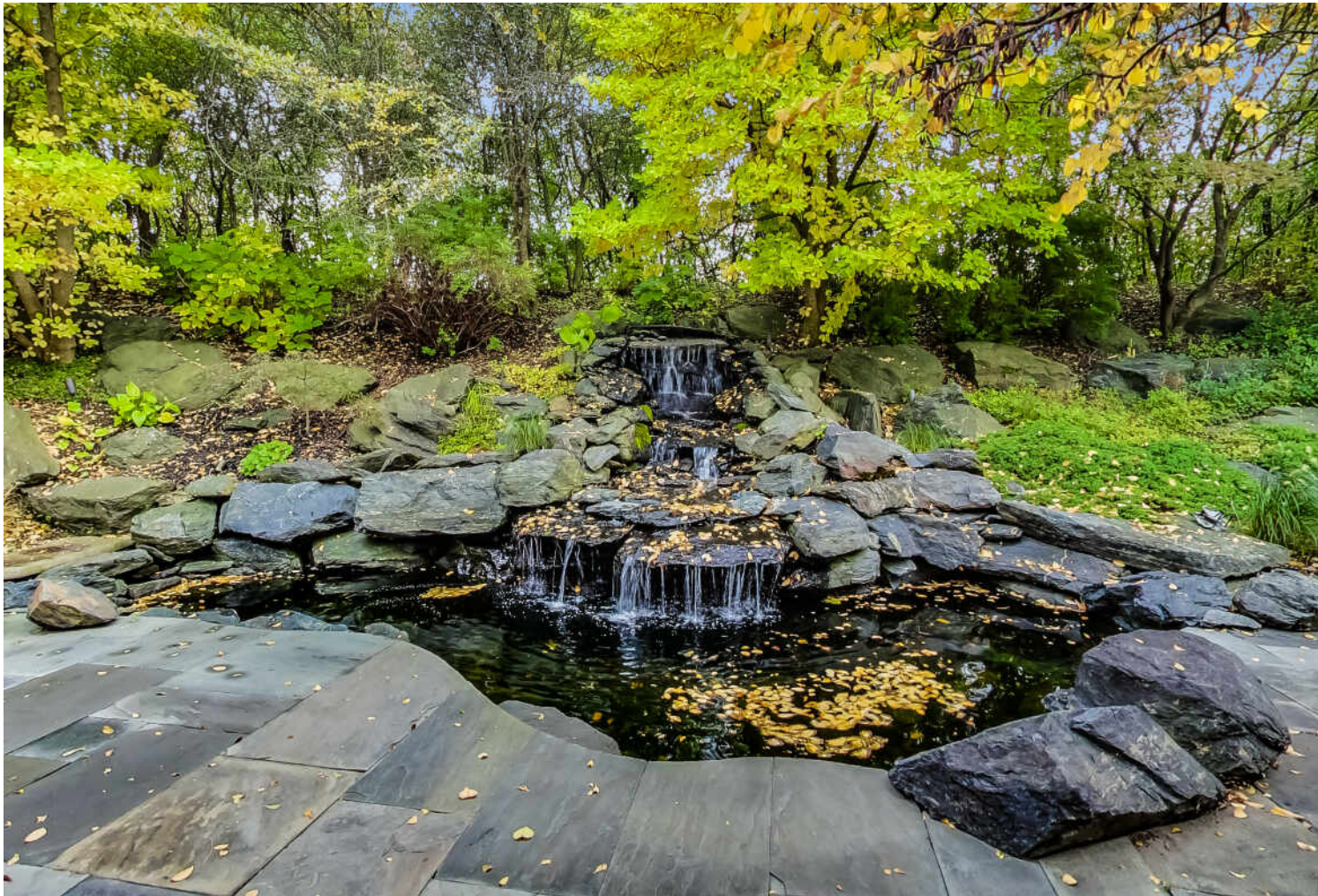


JANET EMMERMAN BROKER

847.612.1584 mobile  
847.881.0200 office  
janetemmerman@atproperties.com

24 LONGMEADOW ROAD • WINNETKA





## 24 LONGMEADOW ROAD FEATURES

### FEATURES

Nestled on a private cul-de-sac, & surrounded by nearly an acre of manicured grounds, this timeless custom built home is a classic inside & out.

It is enhanced with landscape lighting & lush plantings that encompass a blue stone boulder scaped waterfall, koi pond & patio.

Large rooms & excellent floor plan assure a fabulous home for entertaining but also very comfortable for everyday living.

The professionally designed kitchen includes 2 sinks, cabinet disguised freezer drawers, grill, professional hood, steamer, excellent storage & island with pendant lighting.

Living Room has marble mantle and tumbled marble tile surround, custom display shelving, & plantation shutters.

Main floor has oak flooring and "pickled" paneling, marble floors, granite wet bars, pecky cypress paneled storage and many other luxury features.

Unique Primary Suite with designer decor & lighting, custom built-in cabinetry, & two ensuite spa-like bathrooms!

A new roof from the rafters to shingles and a heated garage for those winter days!



**JANET EMMERMAN** BROKER

847.612.1584 mobile  
847.881.0200 office

janetemmerman@atproperties.com

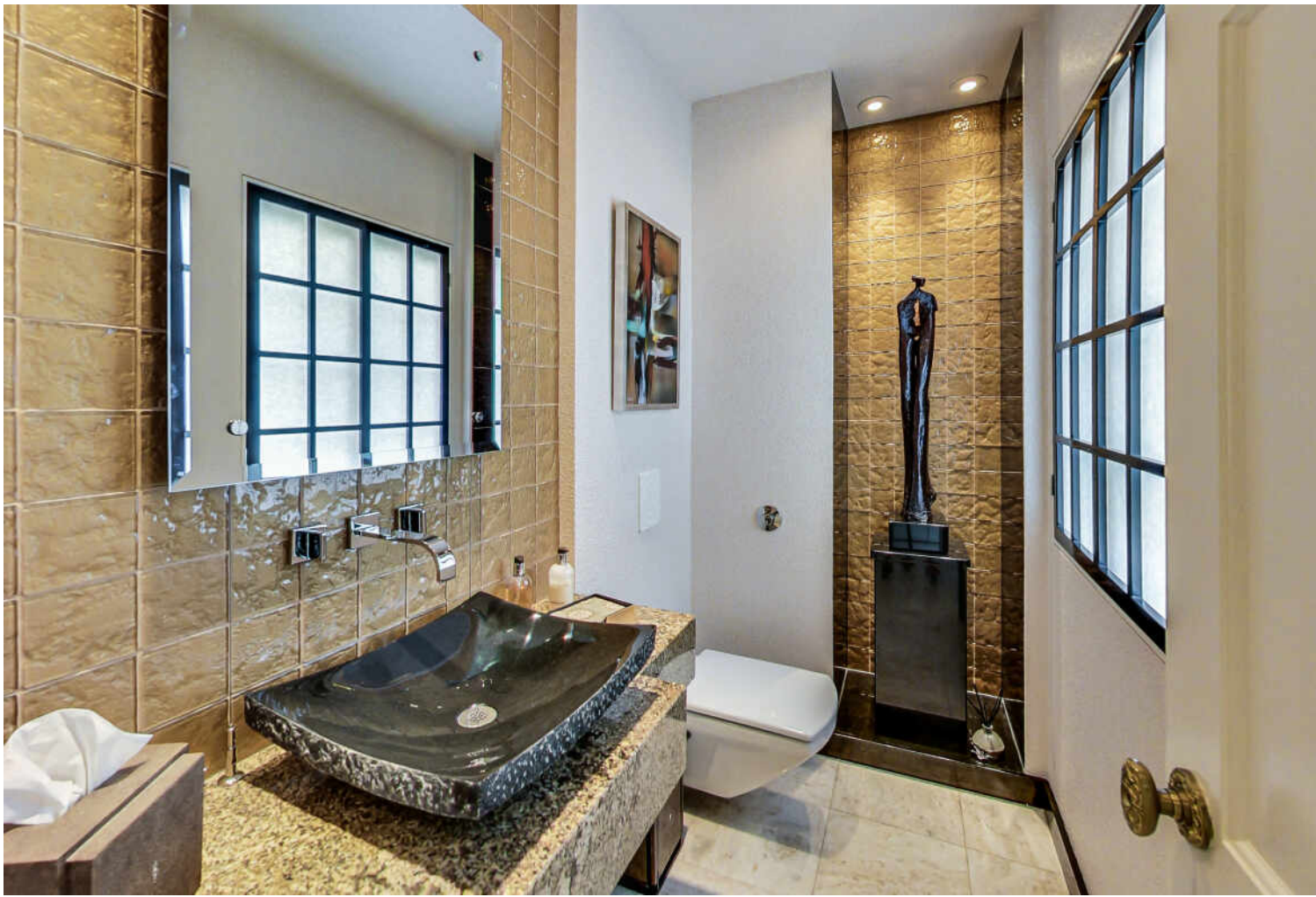




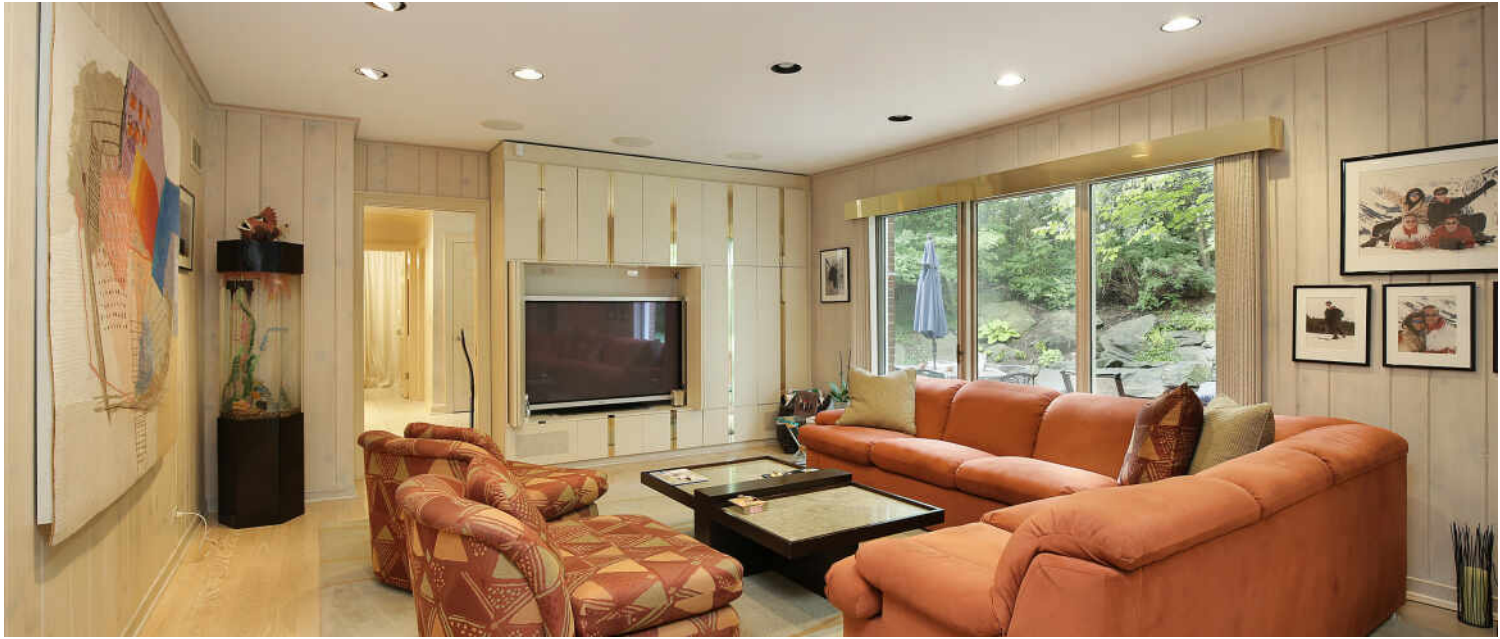






























## WINNETKA IS BEAUTIFUL INSIDE AND OUT – FROM ITS PICTURESQUE DOWNTOWN AND SCENIC BEACHES TO HOMES DESIGNED BY RENOWNED MASTERS OF ARCHITECTURE.

*Locals love the tree-lined neighborhoods and charming business districts that offer everything from upscale shops and grocery stores to popular dining spots. With three Metra stations, Winnetka is also convenient for commuters.*

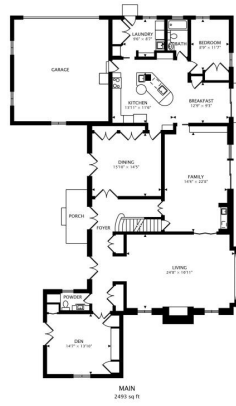
Gorgeous neighborhoods surround the village's downtown business district, putting residents near a variety of boutique shops and eateries. Three Metra stations are also located throughout the community, providing convenient commuting options to downtown Chicago. With Winnetka's beautiful beaches, golf courses, A.C. Nielsen Tennis Center, Ice Arena, and numerous parks, you may never want to leave.

Public schools in Winnetka include New Trier High School, which consistently ranks among the best in the country.

Winnetka's housing choices range from multimillion-dollar lakefront mansions to in-town condominiums and townhomes. Victorians, Colonials, and Tudors are interspersed with contemporary and new construction homes on graceful tree-lined streets. Neighborhoods feature homes by some of the most distinguished architects of their day including George Maher, Howard Van Doren Shaw, and David Adler.

For all of its beauty, residents will tell you it's what's on the inside that counts. They love Winnetka's close-knit feeling and sense of community, with neighbors coming together for block parties, parades, and fireworks.





@properties® | CHRISTIE'S  
INTERNATIONAL REAL ESTATE

*Leading* REAL ESTATE  
COMPANIES  
OF THE WORLD®

LP  
LUXURY  
PORTFOLIO  
INTERNATIONAL®

