

2520 DOROTHY DRIVE  
AURORA





## STYLE & SPACE FOR TODAY'S LIVING!

Step inside to a charming living-dining room...love the 2 story turned staircase!

The home is centered by an eat-in kitchen. The spacious mudroom is truly a rear foyer with laundry area, pantry, powder room and tons of storage space.

The VAULTED family room can host a crowd. PLUS there is a versatile sunroom graced by glass French doors...office, playroom, craft room...up to you. Love this floorplan where the family room and sunroom span the back of the home. The views of the open backyard are simply beautiful!

Upstairs are 4 bedrooms where the Master suite spans from the front of the home to the rear with an amazing sitting area and walk-in closet. A full bath serves the other 3 bedrooms.

The full basement is finished for fun...home office spot, exercise room, overflow entertaining AND ANOTHER FULL BATH! Adding the basement this home is OVER 2,800 sq. ft..

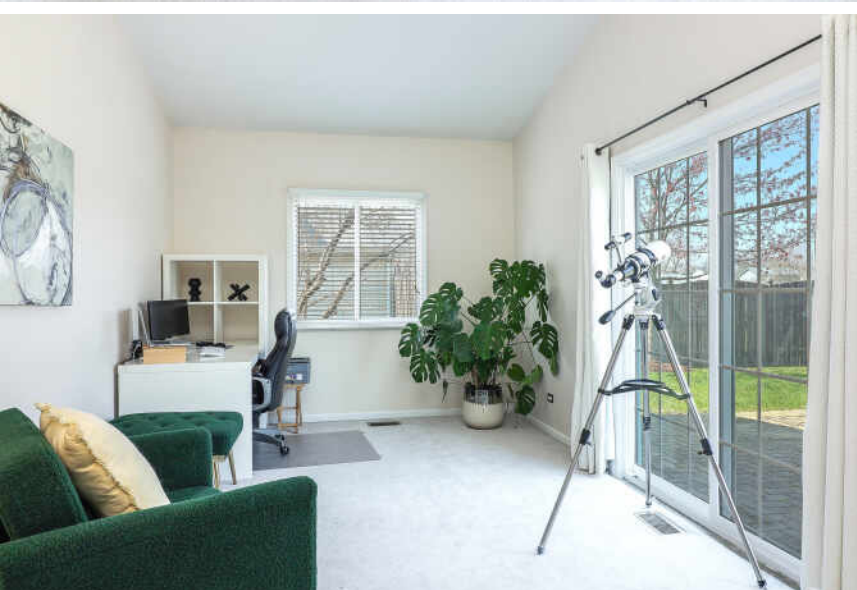
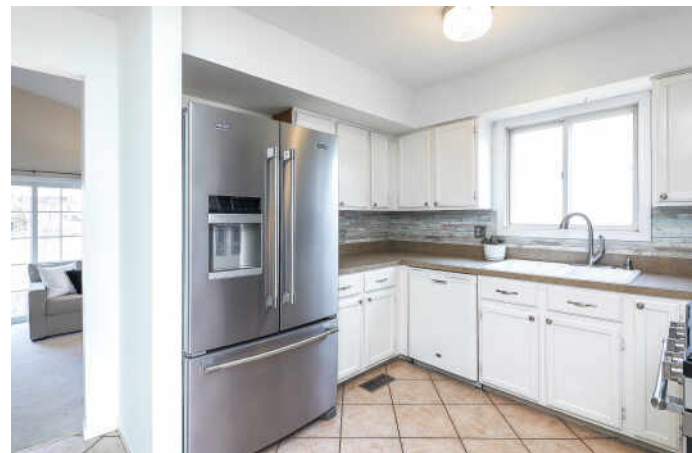
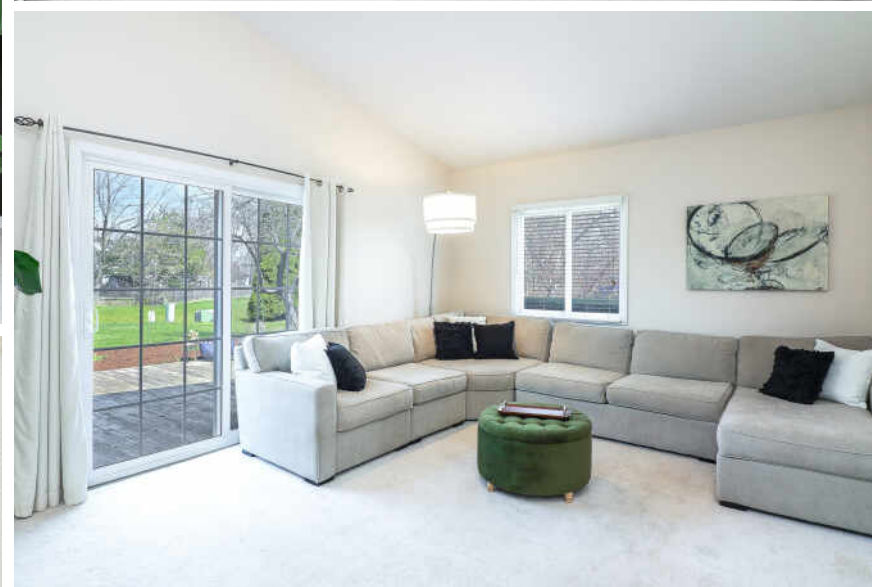
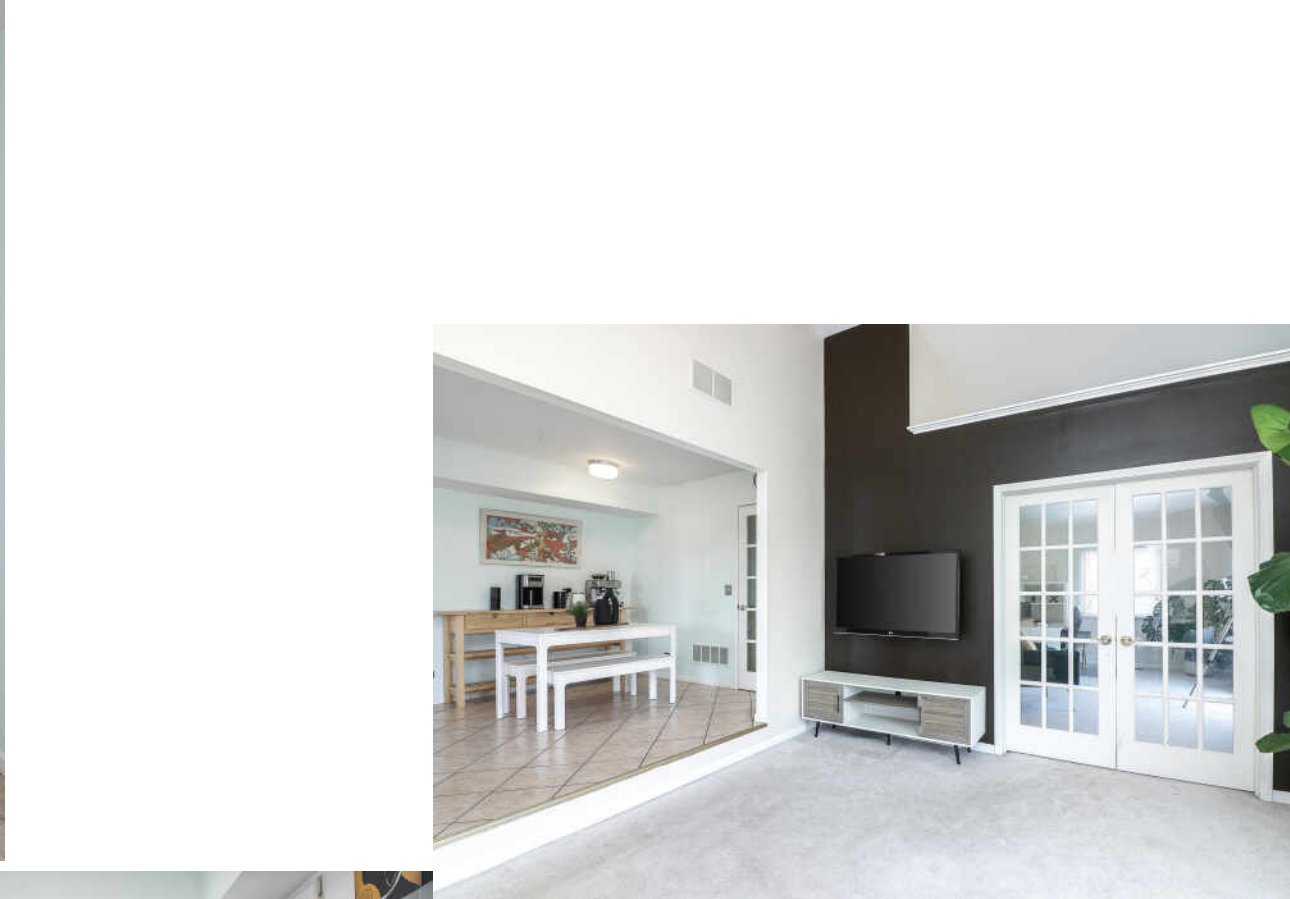
The yard is simply wonderful, flat and sunny, get ready to enjoy the outdoor months and the open views thru-out every season.

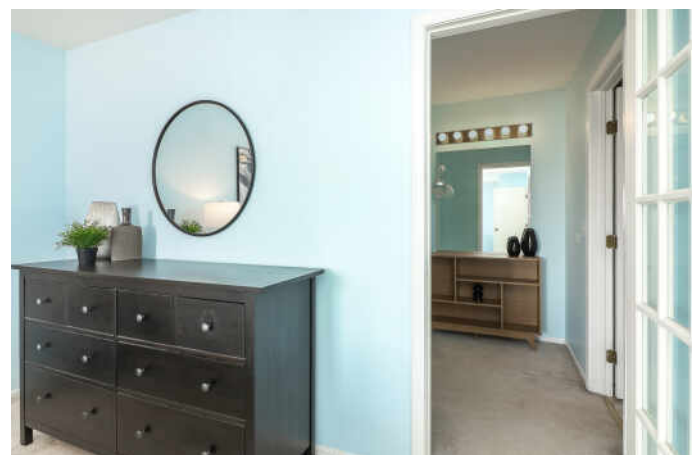
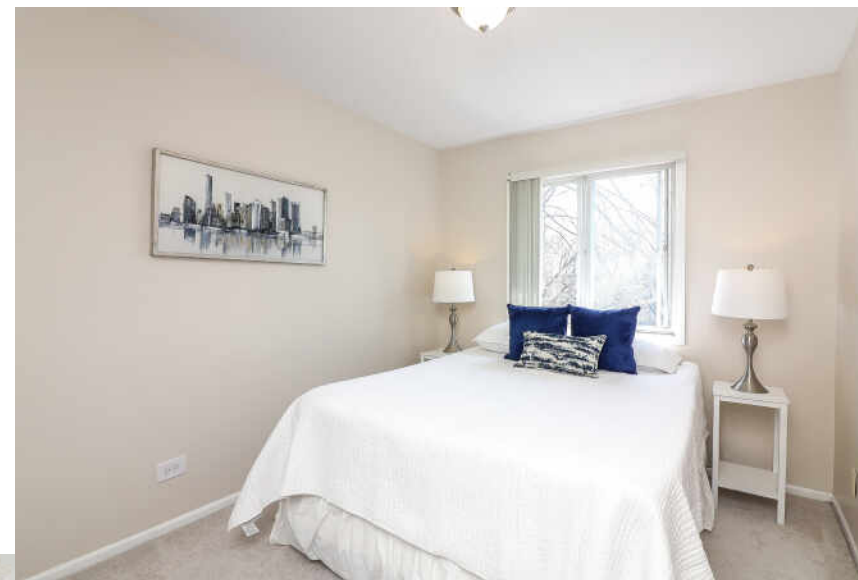
Additionally, this location provides many conveniences with the Fire Department and Rush Copley Hospital less than 1.5 miles away, easy access to I-88. Minutes away from shopping and dining to meet all your needs.

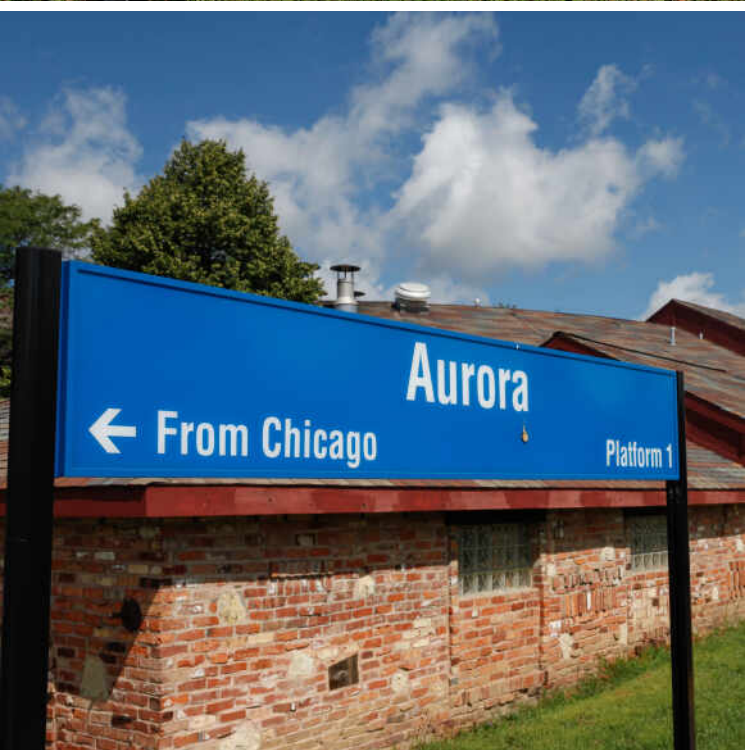
Naperville 204 schools.

Welcome Home!

**4 BEDROOM**  
**3.1 BATH**  
**TAXES: \$8,048**  
**ASSESSMENTS: \$250 / YEAR**







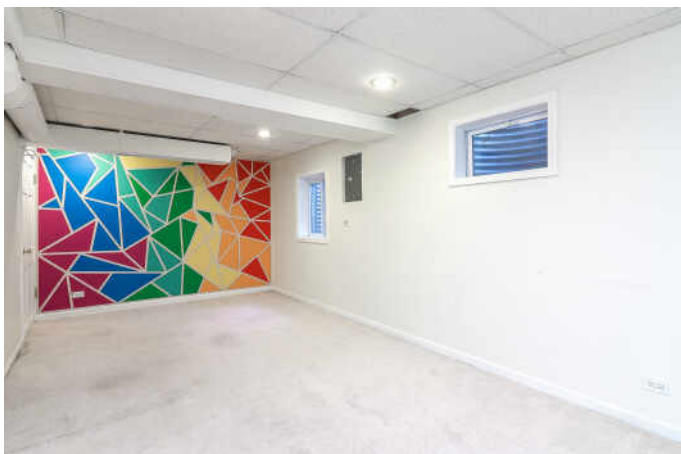
THE CITY OF **AURORA** IS ONE OF THE  
FASTEST GROWING COMMUNITIES IN THE  
COUNTRY.

Located along the Fox River, its historic downtown has a number of architectural landmarks including the Paramount Theatre, as well as several commercial buildings by George Grant Elmslie, a famed Prairie School architect. The city is also home to the Phillips Park Zoo, which offers free access to its visitors.

Aurora also has an impressive collection of structures by renowned architects such as Frank Lloyd Wright, Ludwig Mies van der Rohe, Bruce Goff, and Elmslie. The city also has a large collection of historic Sears Catalog Homes and Lustron all-steel homes.

Residents enjoy local city events including Downtown Alive, a festival with live music and food booths; Blues on the Fox with national blues artists; and the Aurora ArtWalk with food, art, live music, and theater.

Aurora has a long history as a regional transportation hub. It is the final stop on Metra’s BNSF line. The city also has a stop at the Route 59 station, which borders Naperville.



## NOTES

[illegible]



## CAROL GAVALICK

(630) 244-4422

CAROLGAVALICK@ATPROPERTIES.COM



All specifications, features, designs, price, assessments, taxes and materials are subject to change without notice. Depicted floor plans and architectural renderings are only an artist's impression.

