

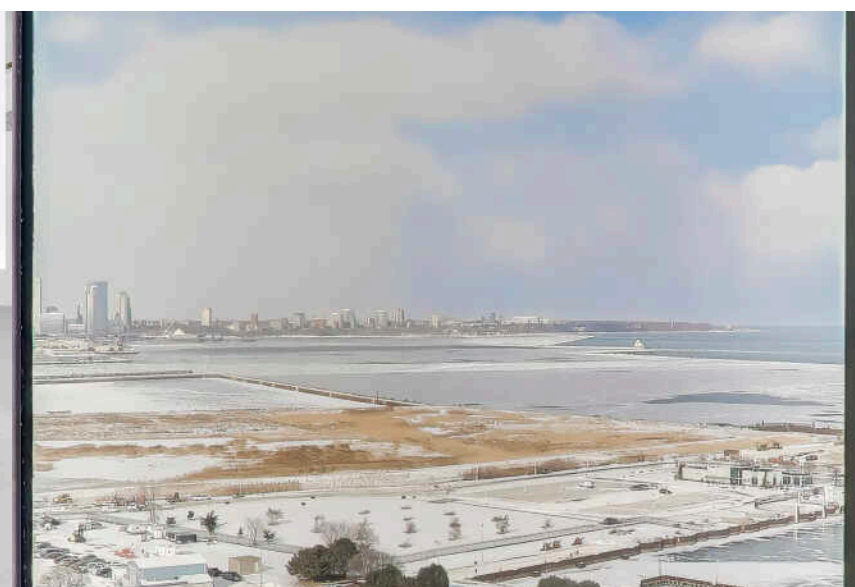
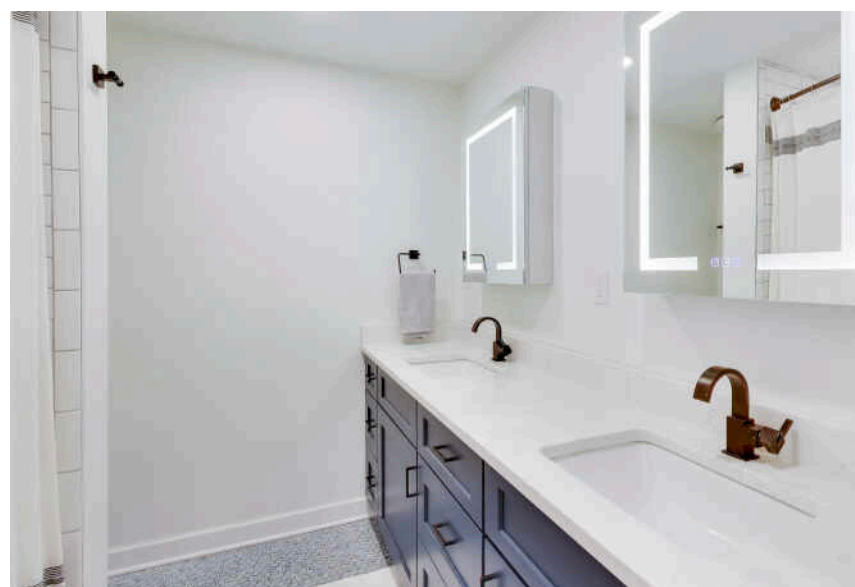
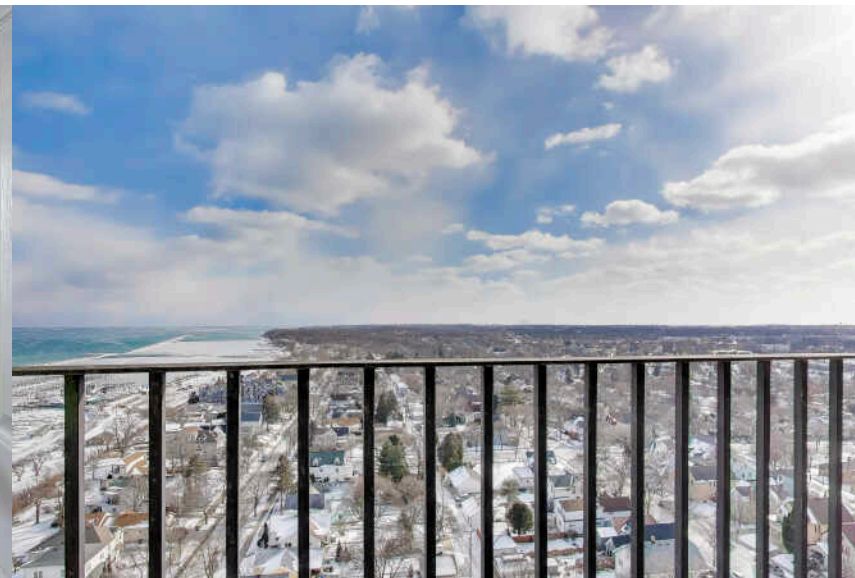
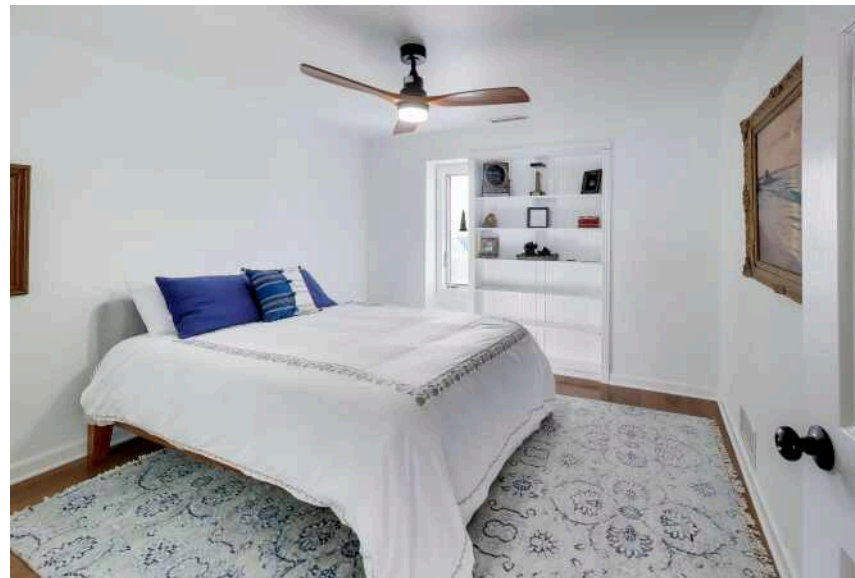
2525 S SHORE DR #20D
MILWAUKEE

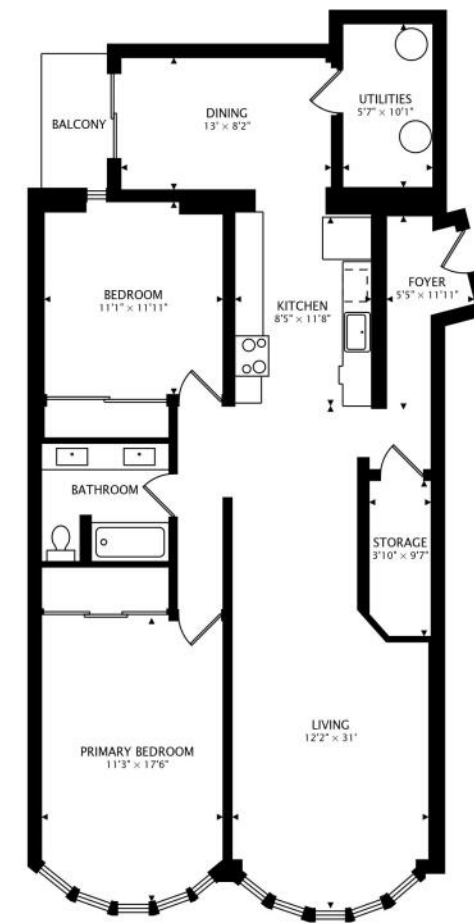
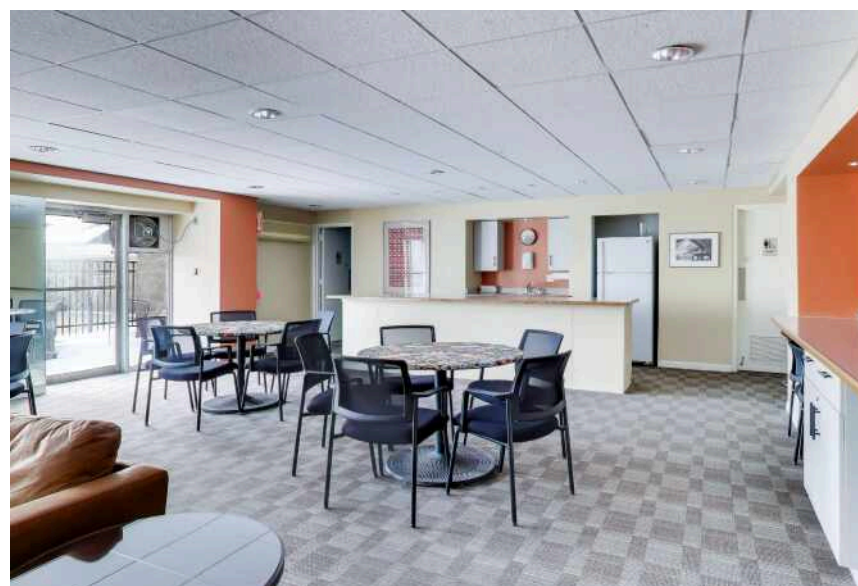




Soak in elevated lakefront living from this 20th-floor corner unit offering breathtaking panoramic views of Lake Michigan, the Milwaukee skyline, and the South Shore Yacht Club. The well-appointed kitchen features stainless steel appliances and solid surface countertops, flowing into a dedicated dining room ideal for entertaining. The spa-inspired bathroom is filled with natural light and designed in calming lake-life hues, featuring a double vanity and tiled shower for a bright, airy feel. The primary bedroom is a private retreat with spectacular city and water views. Enjoy a south-facing balcony overlooking the shoreline and pool deck. Impeccably maintained and move-in ready.

2 BEDROOM
1 BATH
TAXES: \$7,316
ASSESSMENTS: \$725





1301 sq ft + 34 sq ft BALCONY



AS THE LARGEST CITY IN WISCONSIN, LOCATED ALONG THE SHORES OF LAKE MICHIGAN, **MILWAUKEE** HAS PLENTY OF APPEAL.

Since the mid-19th century, the city has been known for its beer-making tradition and is now home to more than 30 breweries. It's no wonder Milwaukee has earned the nickname "Brew City."

Beyond breweries, Milwaukee has garnered a reputation as the "City of Festivals," with everything from small street fests to large-scale events all year round. Summertime brings outdoor music festivals and events like Summerfest – an 11-day music festival at Henry Maier Festival Park. Over 800 acts hit the stage with genres ranging from alternative to rock to pop. Autumn welcomes hundreds of national and international movies to be viewed by over 70,000 attendees at the Milwaukee Film Festival, which features movies from over 50 countries.

The events may slow down in the winter, but the locals don't. When the temperature drops, residents go ice skating or visit the Mitchell Park Horticultural Conservatory to see tropical flowers and plants from around the world. Five times a year, the conservatory's Show Dome is transformed to display unique themes with references to history, culture, or fantasy.

Milwaukee also boasts a thriving art scene, giving locals and visitors the opportunity to explore collections at art museums and galleries.

The city is just a quick 90-minute drive from downtown Chicago and a little over an hour away from Wisconsin's capital, Madison. Residents also have access to nearby Mitchell International Airport.



NOTES _____



JAKE HANSEN

262.705.4907

JMHHOMES@ATPROPERTIES.COM

JMHHOMESWI.COM



All specifications, features, designs, price, assessments, taxes and materials are subject to change without notice. Depicted floor plans and architectural renderings are only an artist's impression.

