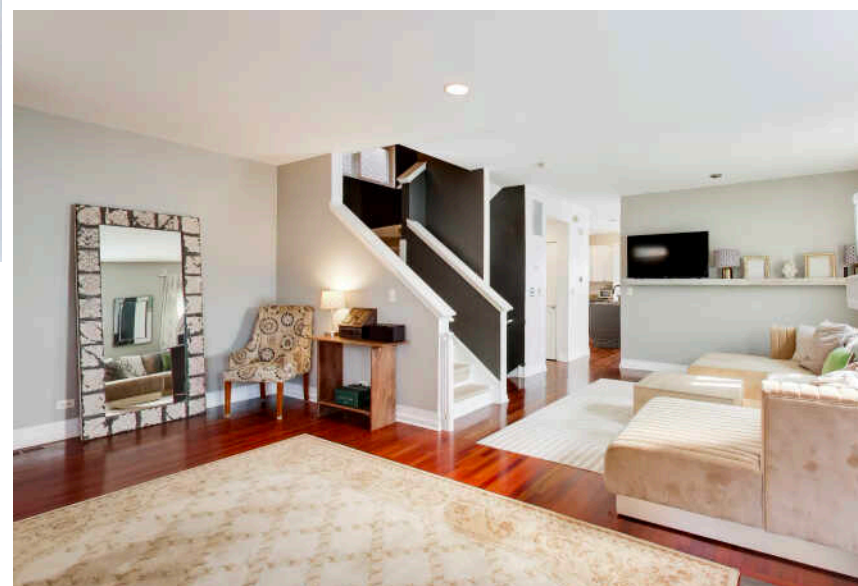


2533 S STARK STREET  
BRIDGEPORT



@properties®

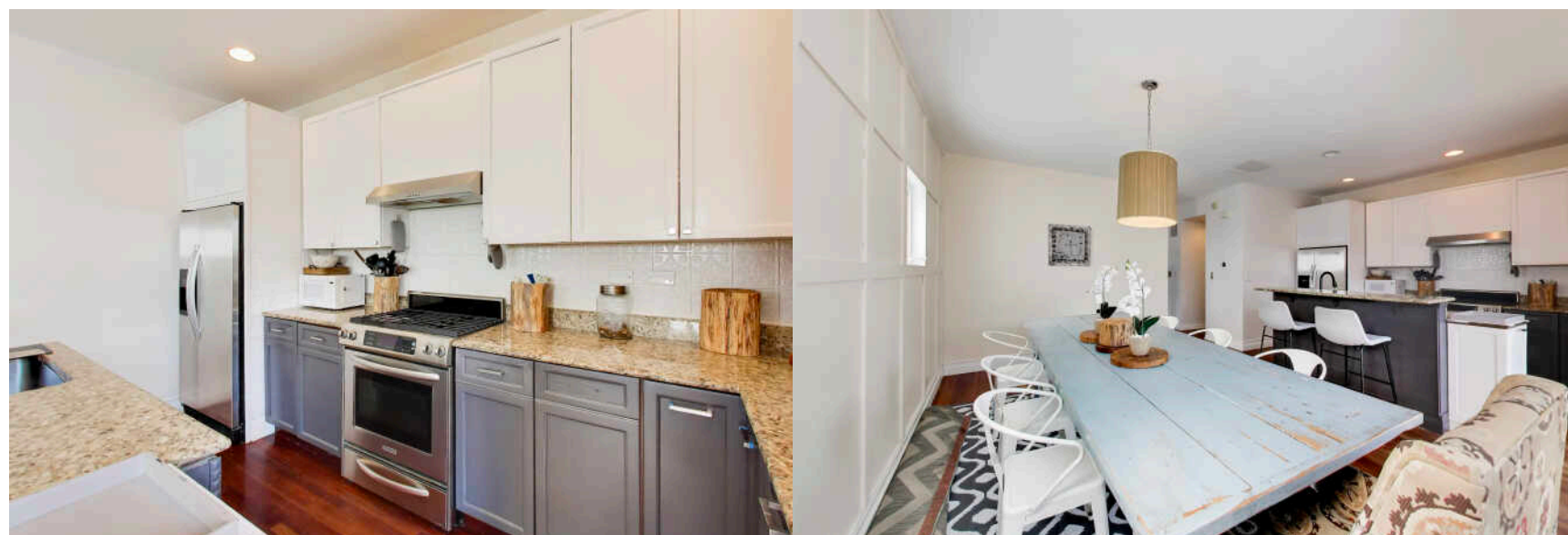
CHRISTIE'S  
INTERNATIONAL REAL ESTATE

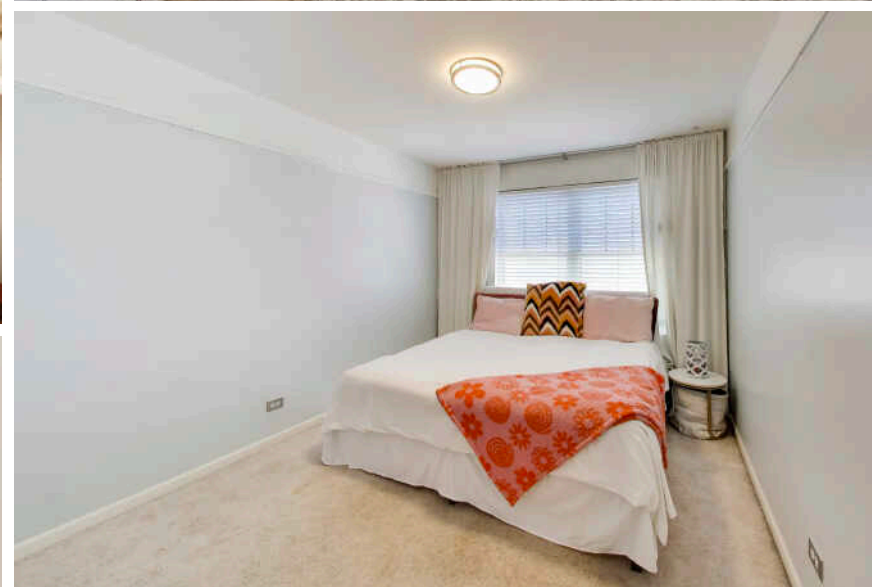
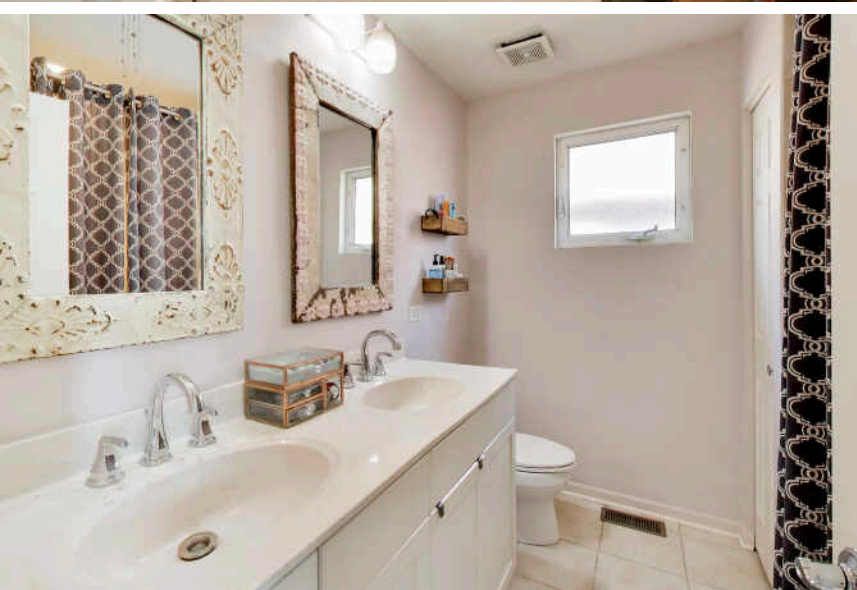
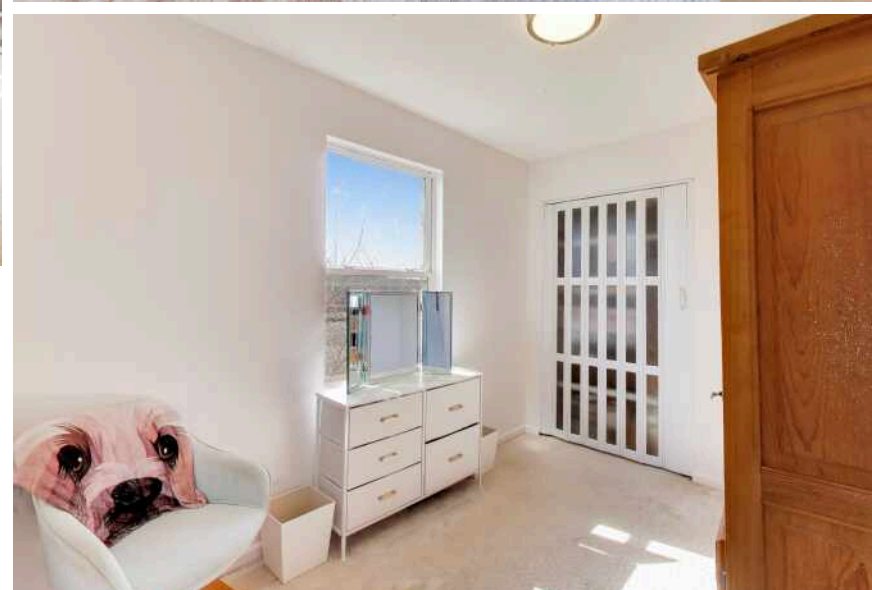
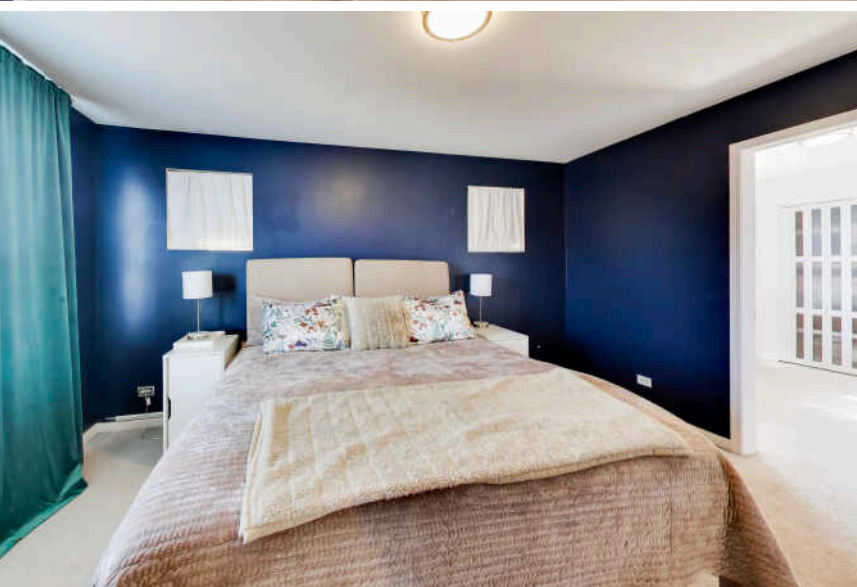
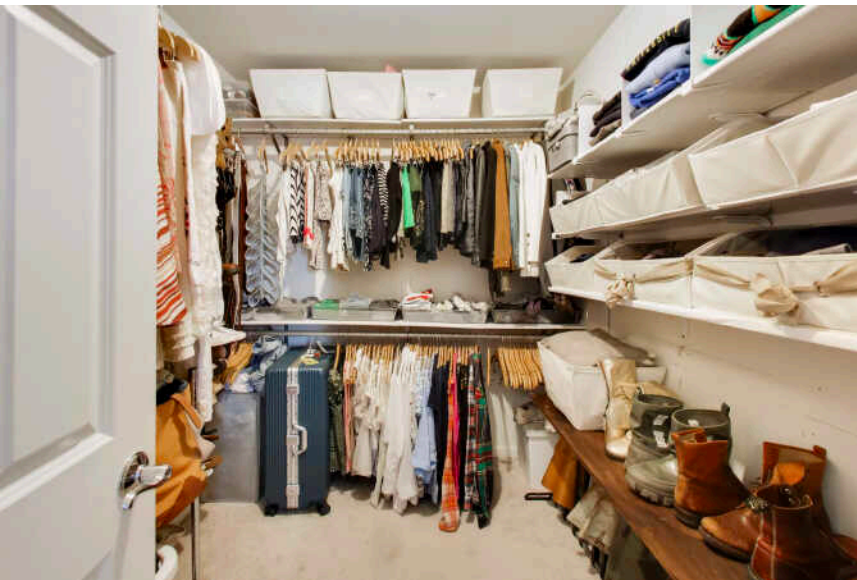


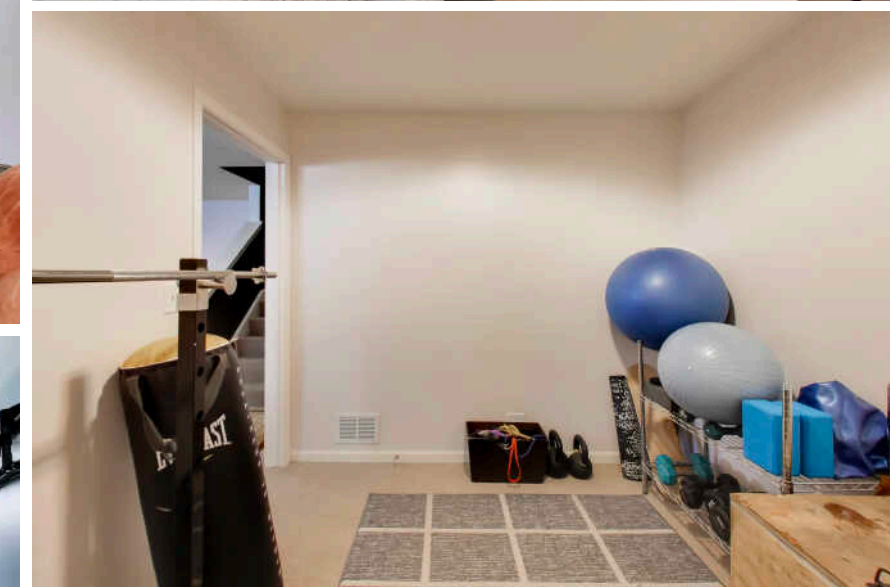
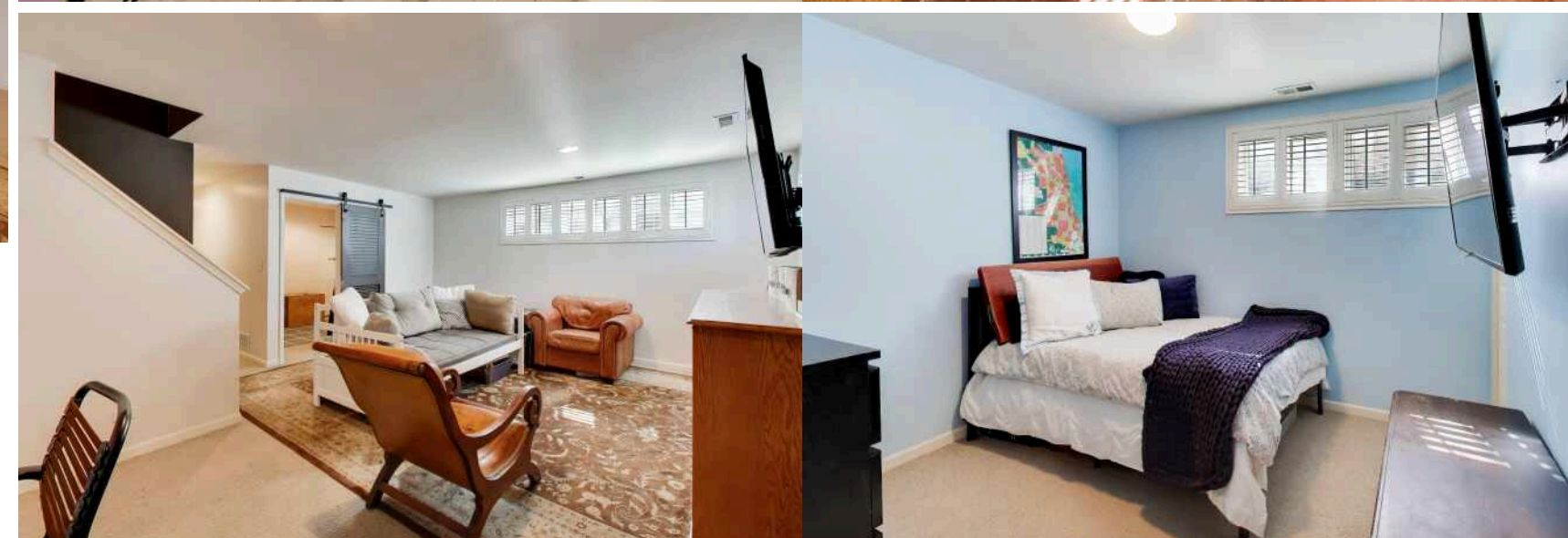
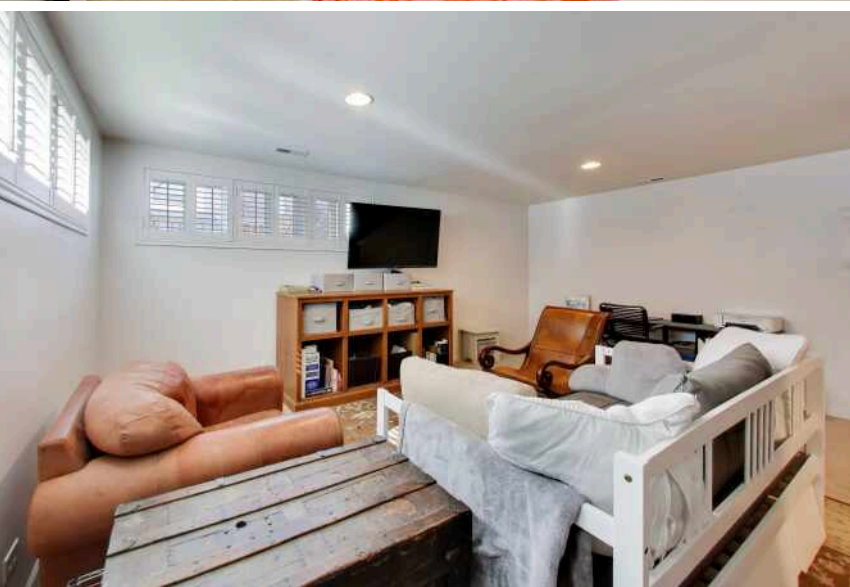
## SPACIOUS 5-BEDROOM, 3.5-BATH HOME SITS AT THE END OF A BRIDGEPORT CUL-DE-SAC

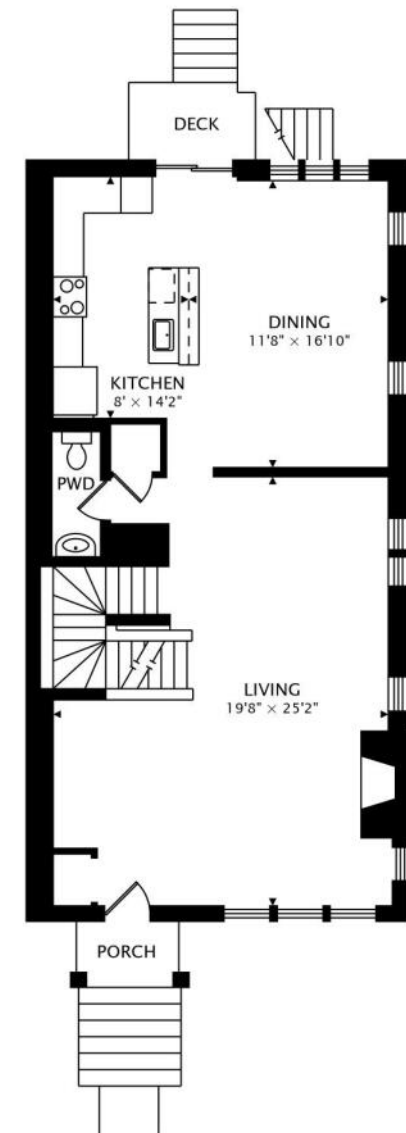
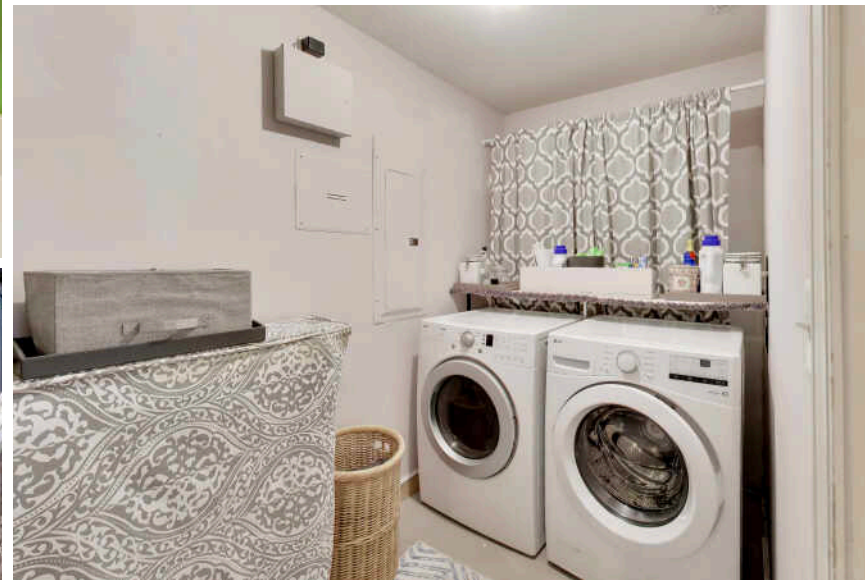
Welcome to 2533 S. Stark St. in a unique and desirable pocket of Bridgeport. This spacious 5-bedroom, 3.5-bath home sits at the end of a cul-de-sac on a larger-than-standard lot, offering additional yard space along the side and rear of the property. The main level features a thoughtfully designed layout with distinct living and kitchen spaces. The expansive living room, anchored by a fireplace, is perfect for entertaining guests, enjoying conversation, or settling in with a good book. The kitchen, located at the rear of the home, includes a center island and provides convenient access to the back patio-ideal for grilling and outdoor dining-with ample space for a large dining table. A powder room completes the first floor. The second level includes the primary suite with an ensuite bathroom and walk-in closet. A unique highlight of this suite is an additional adjoining room that can serve as a nursery, sitting room, dressing room, home office, or an oversized walk-in closet. It could also potentially be converted into a sixth bedroom with hallway access. Two additional well-appointed bedrooms, a full bathroom, and a linen closet round out the second floor. The finished basement offers a comfortable family room-perfect for movie nights, gaming, a playroom, or relaxed lounging. This level also includes two additional bedrooms, a full bathroom, a laundry room, and a utility room. The furnace was replaced in 2025. Additional features include a detached two-car garage. Ideally located in desirable Bridgeport, positioned between Chinatown and Pilsen, the home offers convenient access to the Halsted Orange Line CTA station and the 62 Archer bus. Nearby green spaces include South Halsted Riverwalk, Palmisano (Henry) Park, and Park #571, which features a fishing area.

**5 BEDROOM**  
**3.5 BATH**  
**TAXES: \$10,187.16**

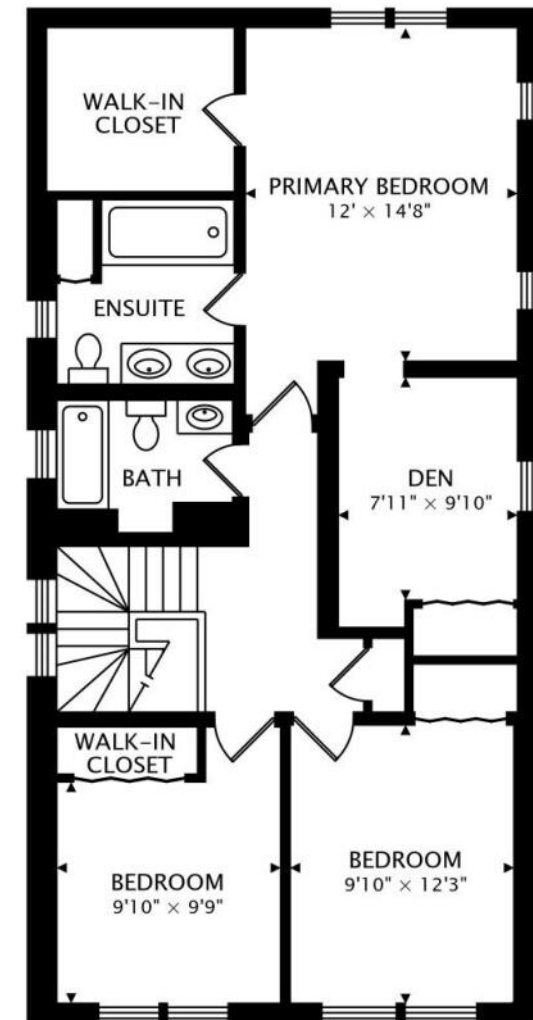




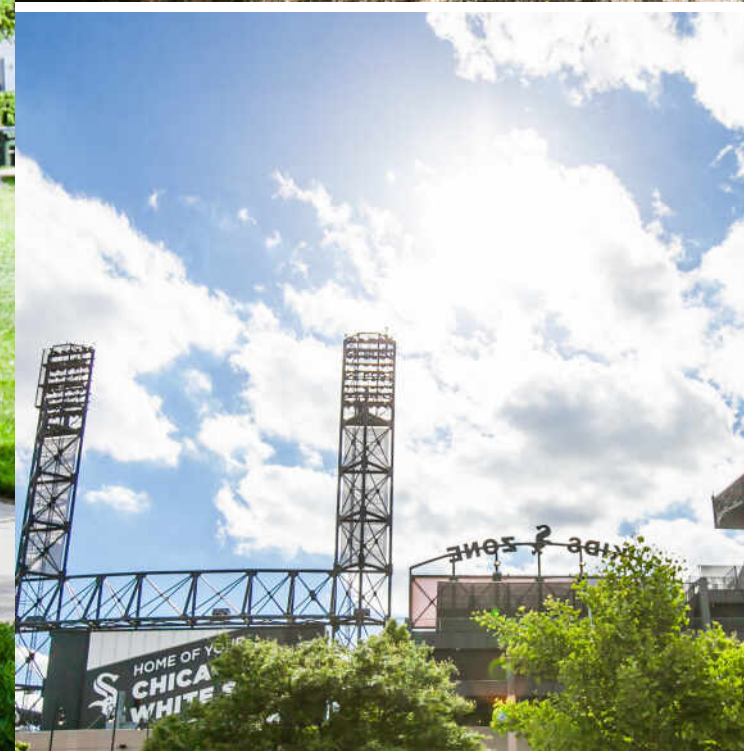




MAIN  
999 sq ft



SECOND  
999 sq ft



**BRIDGEPORT IS THE BIRTHPLACE OF FIVE CHICAGO MAYORS AND THE HOME OF THE CHICAGO WHITE SOX. BUT THAT'S ONLY PART OF ITS STORY.**

Today, the close-knit neighborhood is experiencing a renaissance of sorts. In recent years, residential developers have jumped on opportunities to convert older warehouses and manufacturing plants into loft homes. In addition to converted warehouses, new construction single-family homes and three-flat walk-up condominiums are springing up alongside Bridgeport's historic bungalows.

Bridgeport has become a thriving artists' community with multiple galleries, the Zhou B Art Center, and neighborhood art festivals. The Bridgeport Art Center, occupying the former 500,000-square-foot Spiegel Catalog Warehouse, provides a stunning creative space with incredible views for artists and events.

For the sports-minded, the excitement of a Major League Baseball game is right up the street when the White Sox play at Guaranteed Rate Field. Getting to the ballpark is as easy as taking the Red Line, which is located along the eastern side of the community.

Residents also enjoy being in close proximity to a popular brewery as well as local restaurants that offer a variety of cuisines.





## BRETT PECHTER

847-858-5464

BRETTPECHTER@ATPROPERTIES.COM