

2546 JEFFERSON DRIVE
STEVENSVILLE





ROOM DIMENSIONS

MASTER BEDROOM : 13' × 25'

2ND BEDROOM : 12' × 12'

3RD BEDROOM : 15' × 11'

4TH BEDROOM : 11' × 11'

LIVING ROOM : 19' × 15'

DINING ROOM : 15' × 15'

KITCHEN : 21' × 13'

FAMILY ROOM : 21' × 24'

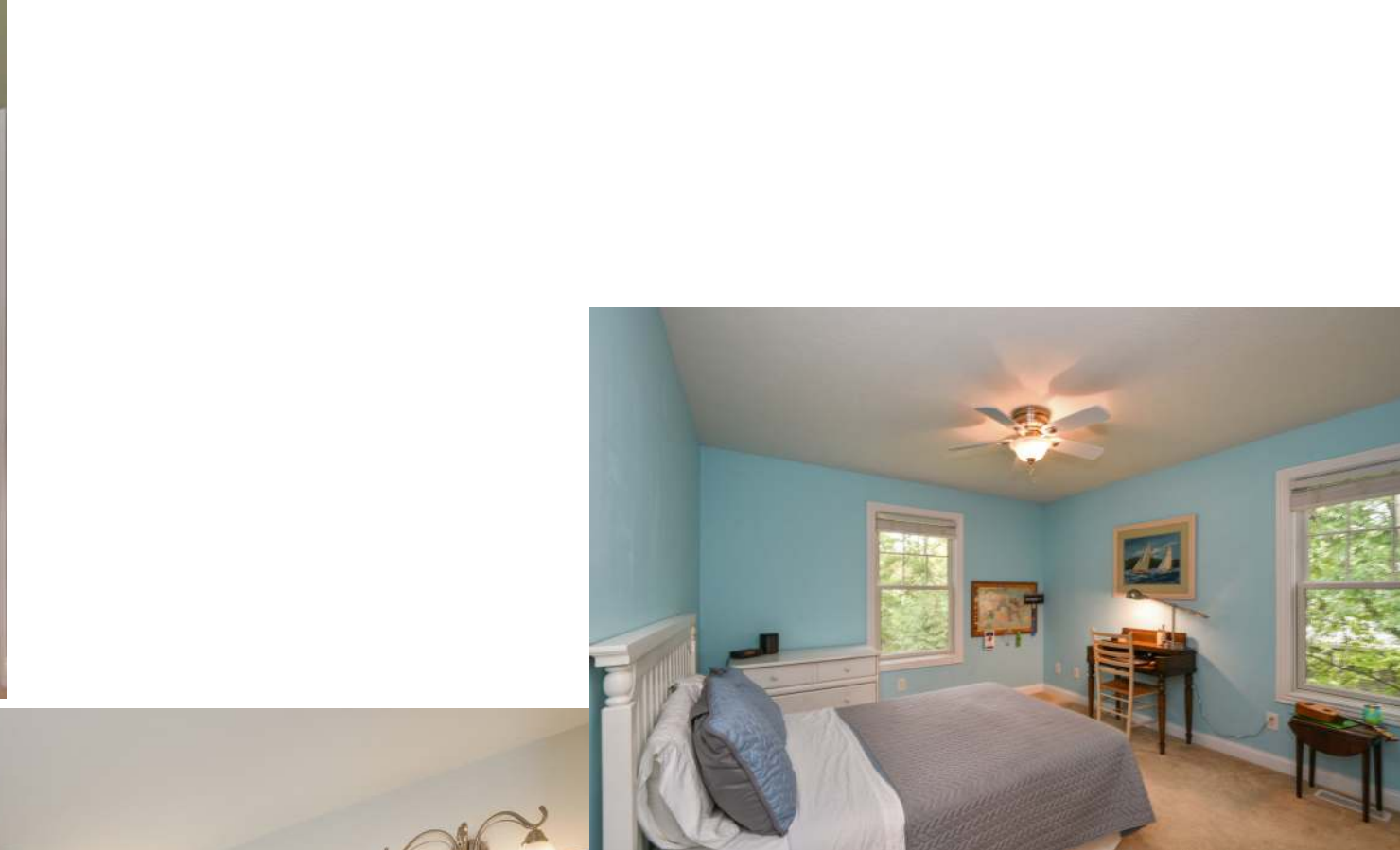
FABULOUS HOME ON PRIVATE WOODED LOT IN DESIRABLE HERITAGE SUBDIVISION

Beautiful architectural detail thru-out including columns, crown molding & wide trim. Open Great Room with gas fireplace & wall of windows accenting the picturesque exterior hardwoods. Custom eat-in kitchen with center island, granite counters, wine cooler, walk-in pantry & hardwood floors. Spacious formal dinning perfect for entertaining.

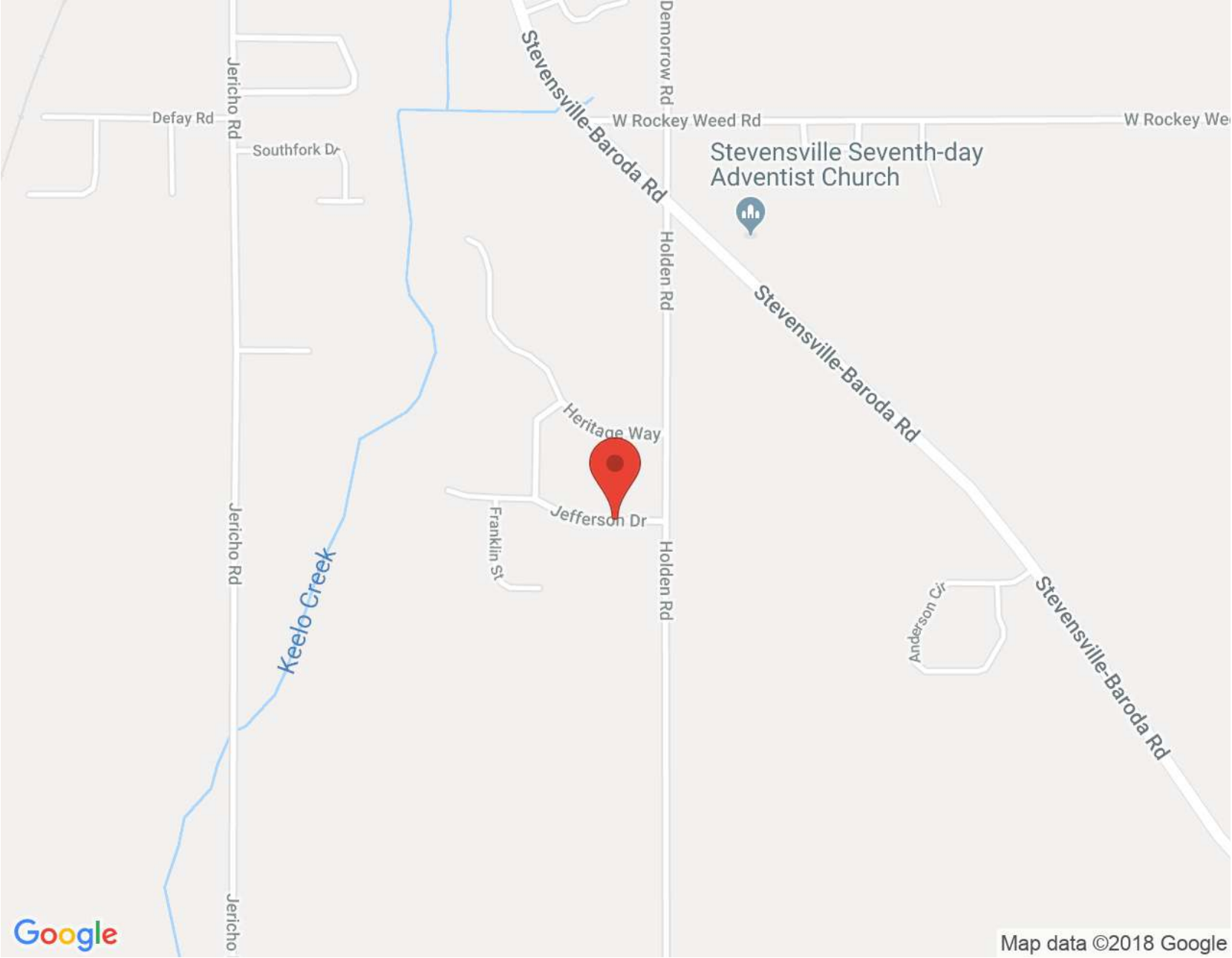
2nd Story offers 4 Bedrooms including spacious master suite with sitting area, tray ceilings, 2 walk-in closets, soaking tub & walk in shower. Lower level offers Rec Room & newly added full bath. Enjoy the serene back yard on brick paver patio with built-in fire pit. The Heritage includes sidewalks, walking trails, clubhouse & tennis courts. What a wonderful place to call HOME.

TAXES: \$5,153









NOTES _____



MICHELE KAISER

(269) 449-0413

MICHELEKAISER@ATPROPERTIES.COM



2546JEFFERSONDRIVE.INFO