

2550 W 112TH STREET #D
KENNEDY PARK/MORGAN PARK





ROOM DIMENSIONS

LIVING ROOM : 23' x 12'

DINING ROOM : 12' x 11'

KITCHEN : 9' x 8'

EATING AREA : 10' x 8'

PRIMARY BEDROOM : 16' x 12'

SECOND BEDROOM : 12' x 12'

THIRD BEDROOM : 12' x 11'

FAMILY ROOM : 23' x 18'

UTILITY ROOM : 14' x 11'

Impeccably maintained and move-in ready townhouse in desirable Maplewood Manor! Pride of ownership is evident throughout this exceptionally clean and meticulously cared-for property, with numerous updates already completed for you. Gleaming hardwood floors, and crown moulding greet you as you enter this 3 bedroom, 2.5 bath home. The updated kitchen offers granite countertops, quality cabinetry, stainless steel appliances, a bright eat-in space and pantry closet. A spacious living room with a gas fireplace, formal dining room and powder room are all located on the main level! The layout flows beautifully from the living room to the screened-in patio, making it easy to relax, entertain, and enjoy indoor-outdoor living. Upstairs, you'll find three generously sized bedrooms, including a primary suite with a walk-in closet featuring a custom organization system. Both the primary and guest bathrooms have been tastefully updated in recent years to include new ceramic tile, fixtures, lighting and skylights. The full finished basement offers additional living space with recessed lighting and upgraded carpeting. Additional storage space can be found in the large utility room. This townhome comes complete with a detached, private 2 car garage and is located in a well-maintained and very well-run HOA community in Morgan Park. Major improvements include updated windows, patio door, entry and storm door, light fixtures, and more! Big-ticket items are already done with a new HVAC (2025), and water heater (2025), along with roof, siding, and fencing updates completed by the association. This home truly checks all the boxes; there's nothing to do but move in!



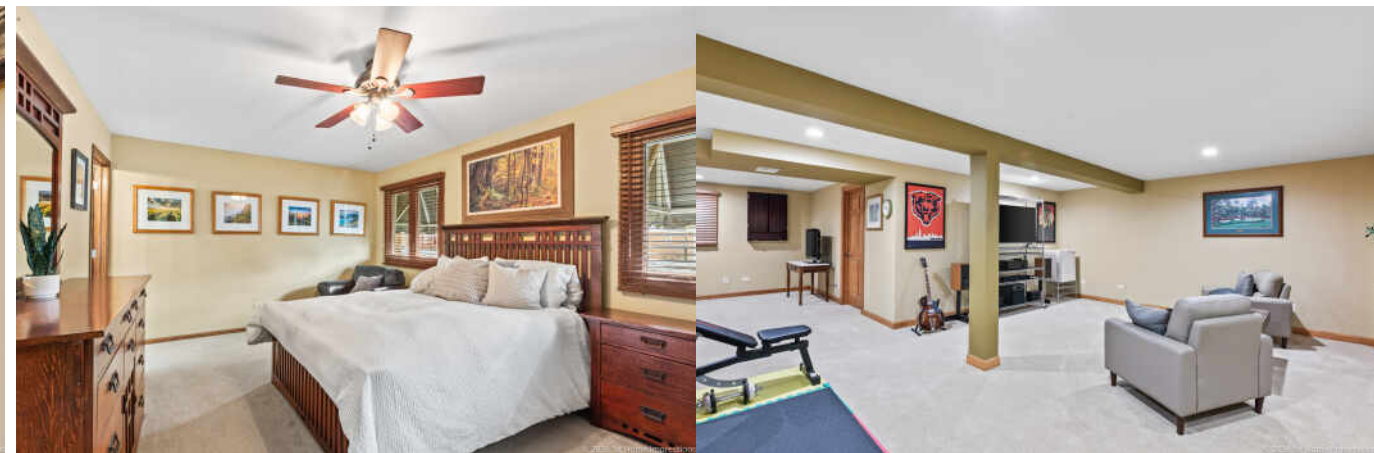
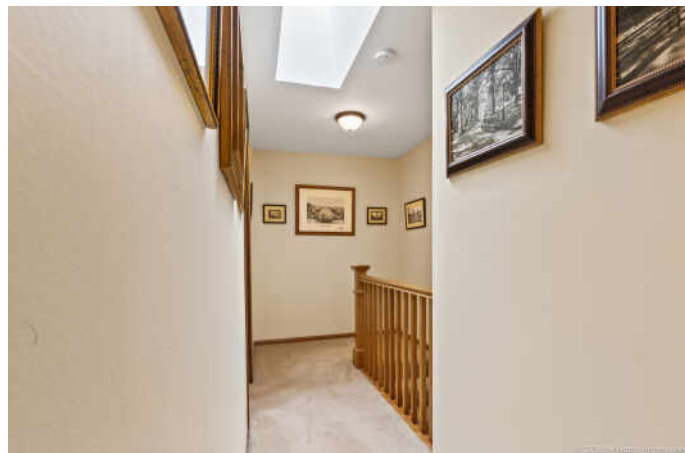
3 BEDROOM

2.1 BATH

TAXES: \$4573.69

ASSESSMENTS: \$250









MOLLY MANN

708.774.4672

MOLLYMANN@ATPROPERTIES.COM

MOLLYMANNHOMES.COM

molly  mann

@properties® | CHRISTIE'S
INTERNATIONAL REAL ESTATE