

2554 HONELEE COURT
VALPARAISO





©VHT STUDIOS

LARGE RANCH ON CORNER LOT IN EMERALD RIDGE!

Beautiful large 2600+ SF ranch on a third acre corner lot in Emerald Ridge Subdivision. 3 bed, 2 bath. Two of the bedrooms each have dual walk in closets. Den with wood beams and fireplace. Main level laundry with 2 storage closets. Unfinished basement with lots of storage. Covered front porch and rear patio. Kitchen with Corian counters and all appliances stay! This home has been well maintained by the original owner. Schedule your showing today!

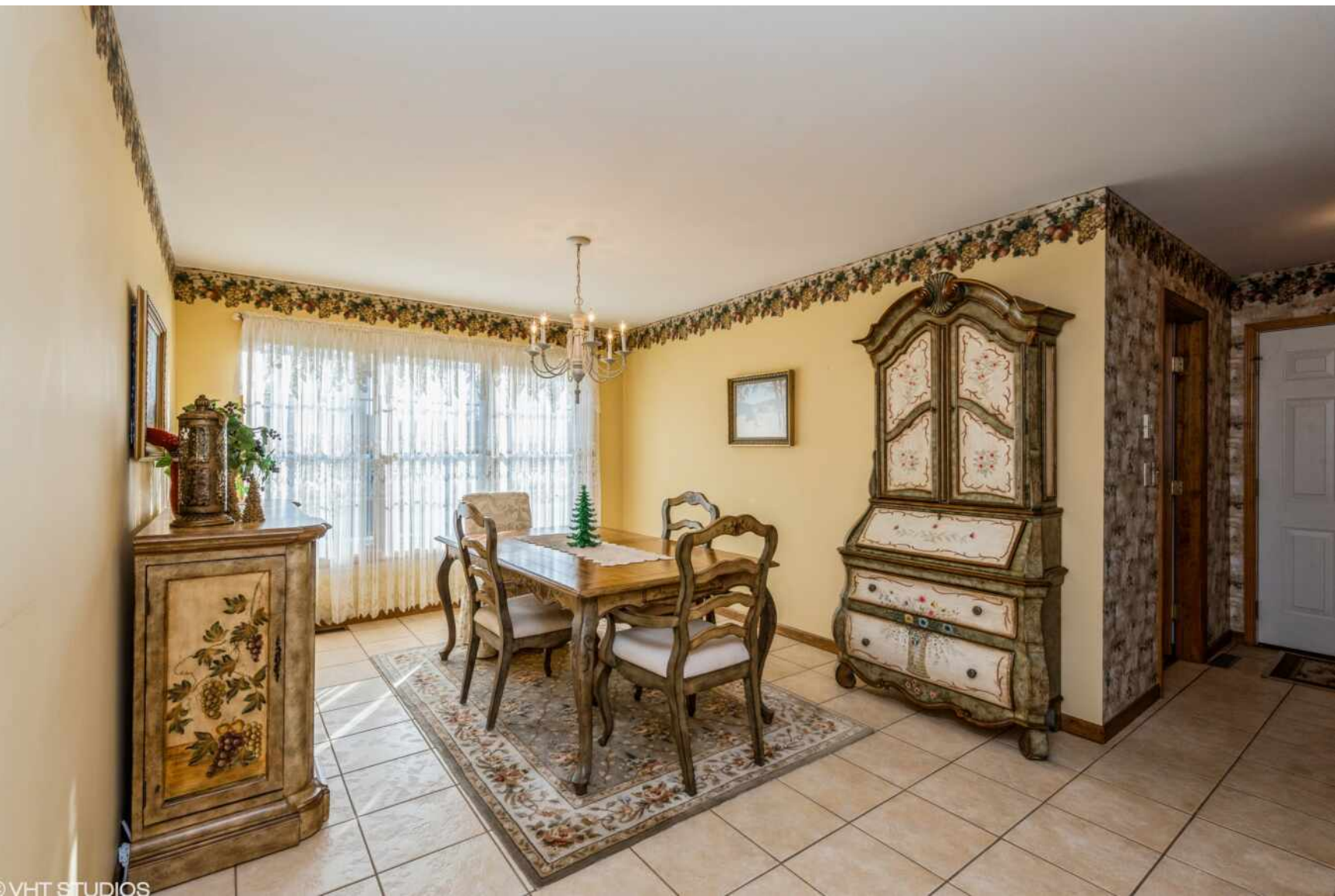
3 BEDROOM
2 BATH



©VHT STUDIOS



©VHT STUDIOS



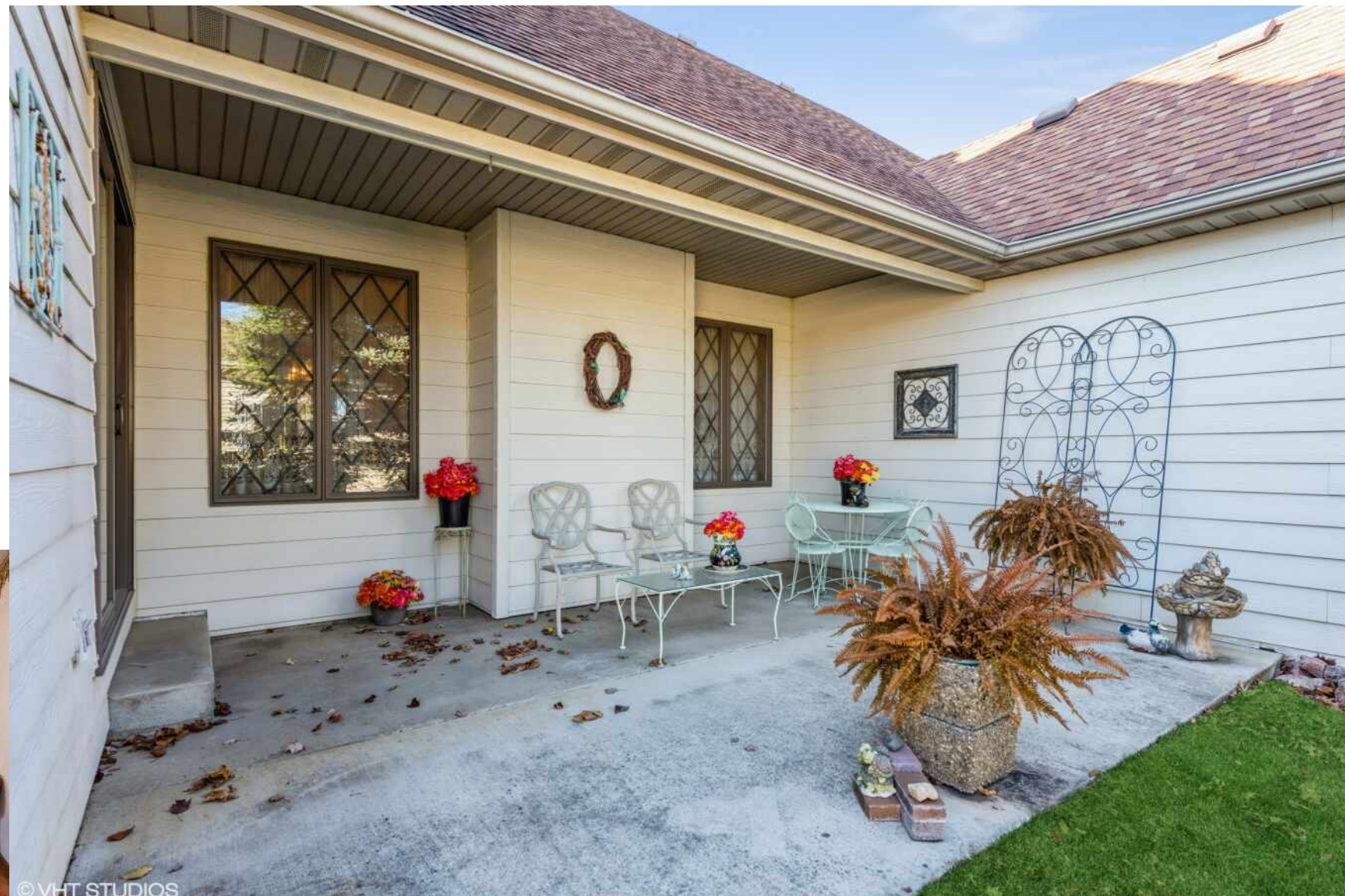
©VHT STUDIOS



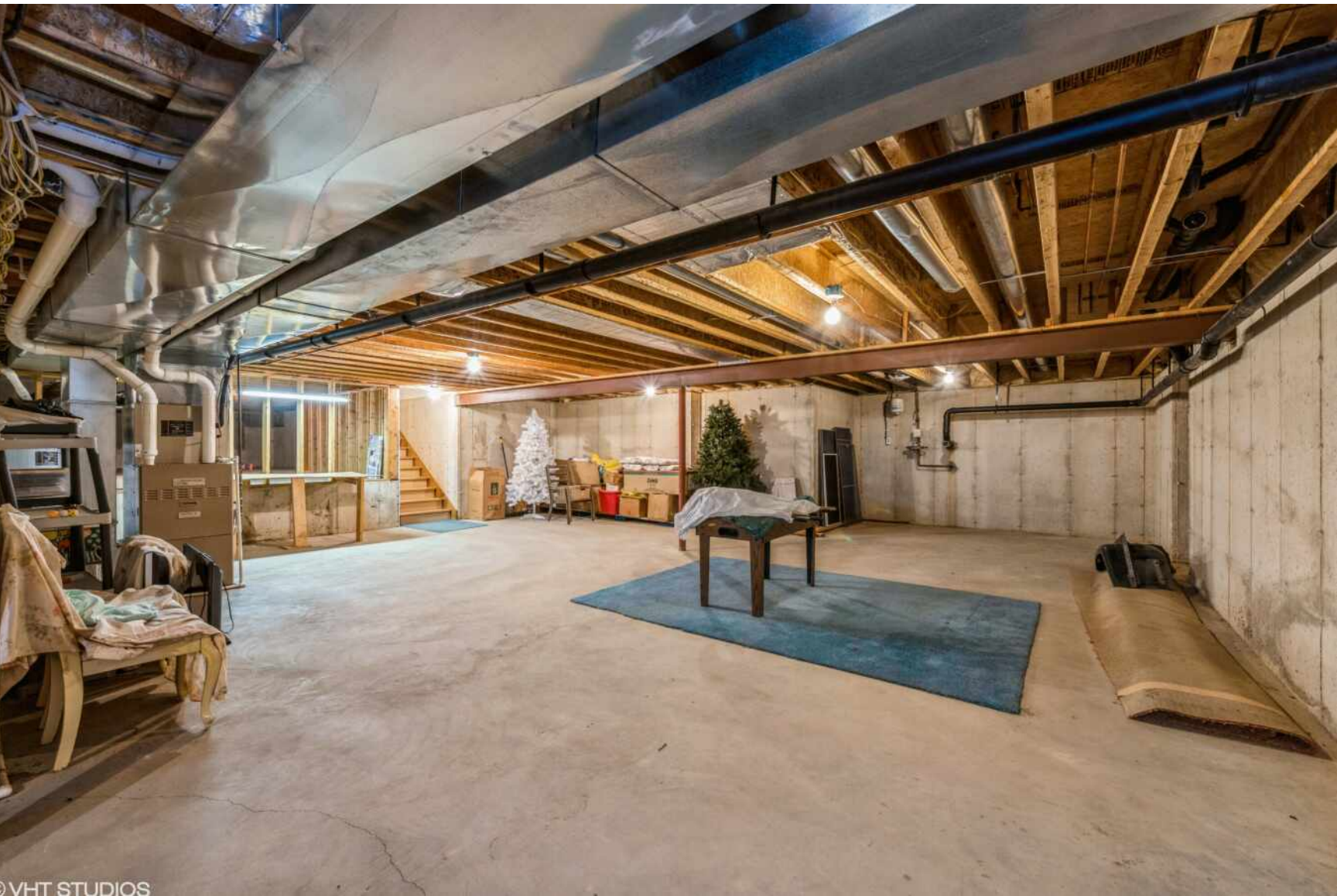
©VHT STUDIOS



VHT STUDIOS



© VHT STUDIOS



©VHT STUDIOS



©VHT STUDIOS



KNOWN AS THE “VALE OF PARADISE,” **VALPARAISO** IS A BURGEONING CITY WITH AN ENGAGED COMMUNITY.

One of Valparaiso’s main attractions is its downtown area. The site of year-round events and local happenings, downtown Valparaiso is home to Central Park Plaza, Porter Health Amphitheater, and Urschel Pavilion, as well as several locally owned shops and restaurants. Among the community’s noteworthy events are the Chocolate Walk, Valparaiso Wine Festival, Valpo Brewfest, Fall Harvest Festival, Porter County Fair, and Valparaiso Popcorn Festival, which honors former resident Orville Redenbacher. Residents are also treated to a farmers market and a summer concert series.

Boasting 238 acres, Sunset Hill Farm County Park is a hub of activity offering trails, camps, field trips, fitness programs, birdwatching, and gardening. Another park that locals frequent is Rogers-Lakewood Park. The 122-acre park offers hiking, biking, fishing, boating, and picnicking.

Valparaiso’s thriving residential market features newly established subdivisions and historic downtown neighborhoods. The city’s 15-plus parks and 20 miles of pathways find their way throughout these neighborhoods, giving residents ample opportunity to spend time outdoors.

When it comes to public transportation, Valparaiso has it covered. The ChicaGO Dash provides express bus service from downtown Valparaiso to downtown Chicago. Meanwhile, the Valpo South Shore Connect takes bus riders from downtown to the Dune Park South Shore train station, which provides service to South Bend and Chicago. Within the city, residents can travel throughout Valparaiso on one of five V-Line bus routes.

[illegible]



BRIGITTE SNEMIS

(219) 405-5745

219.531.2288

BRIGITTE@ATPROPERTIES.COM

BUILDSNEMIS.COM



CHRISTIE'S
INTERNATIONAL REAL ESTATE

2554HONELEE.INFO