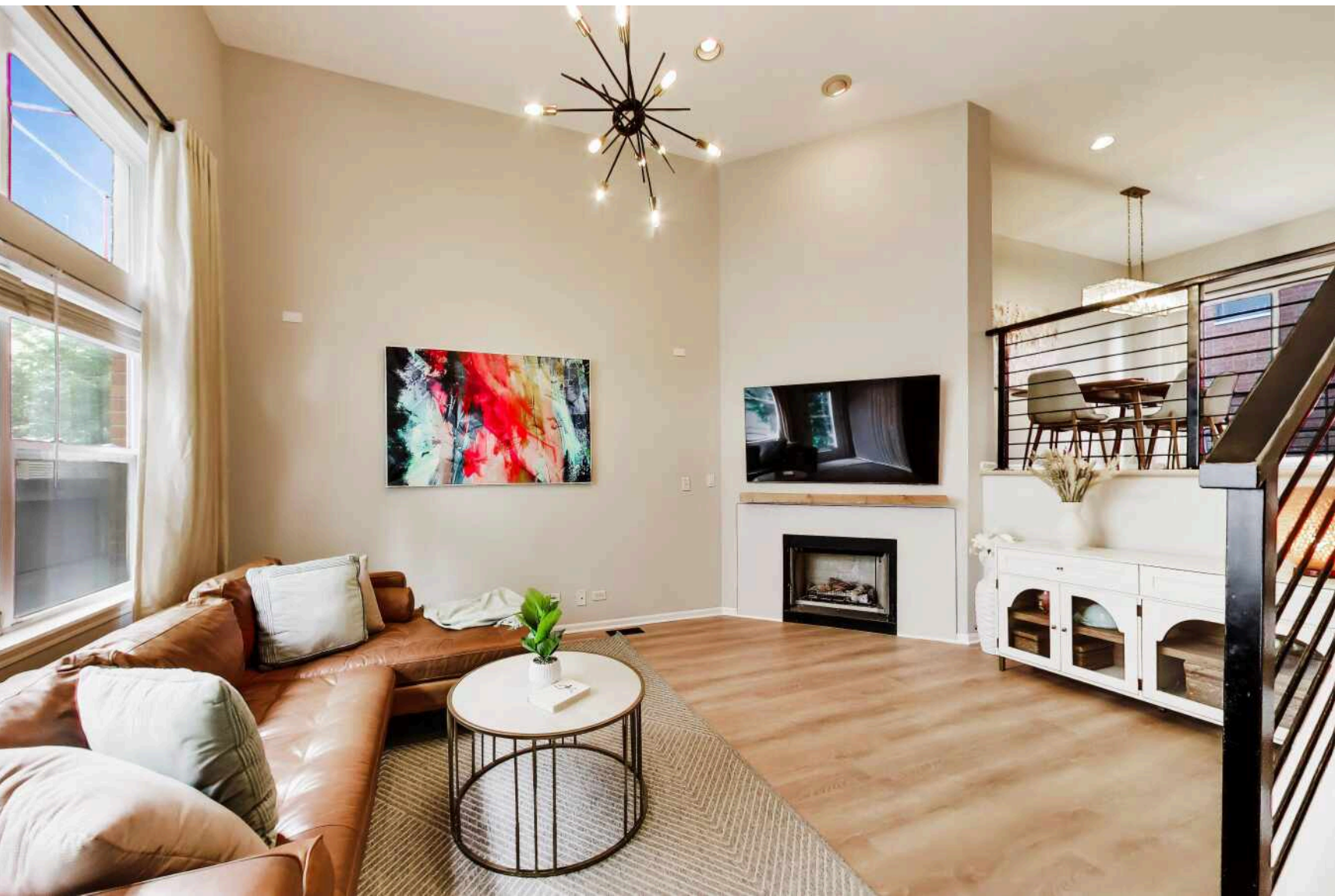


2555 W MOFFAT STREET #D
LOGAN SQUARE

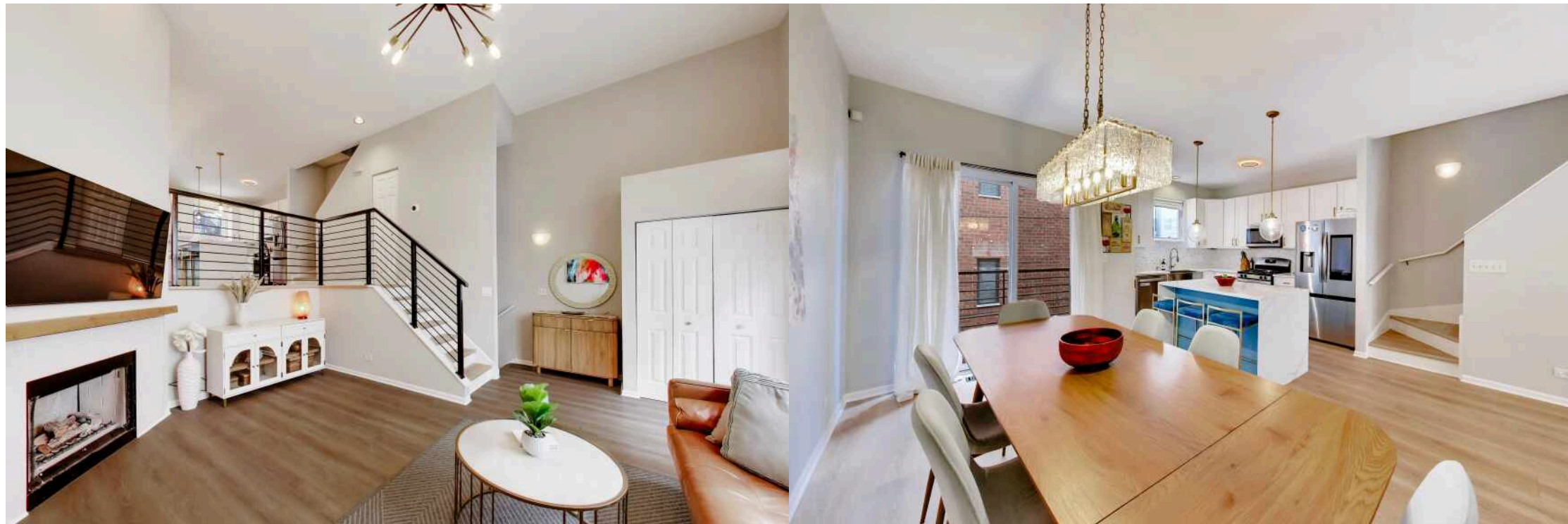


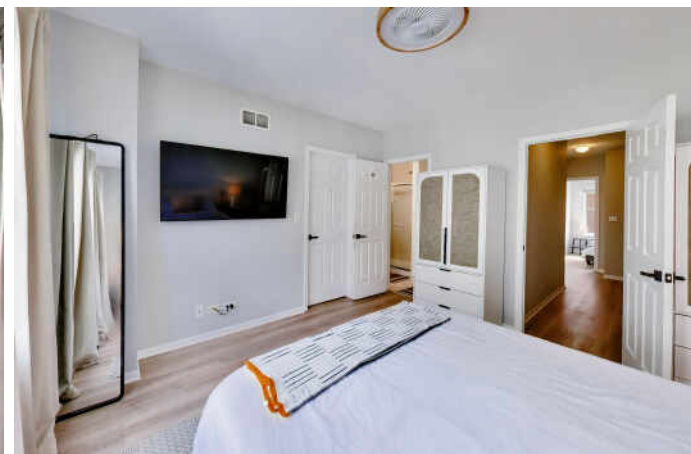
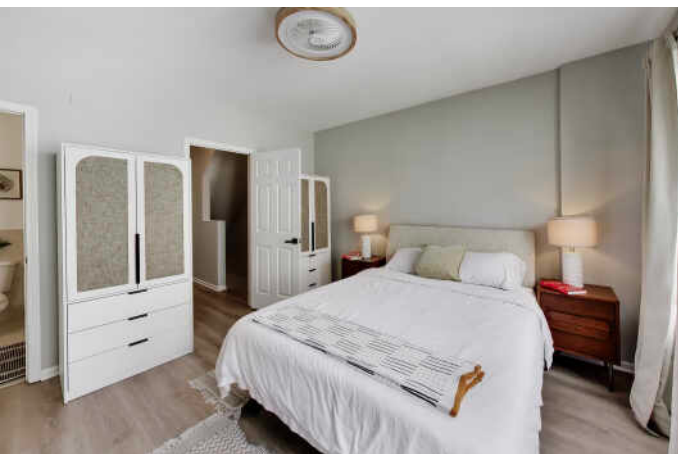
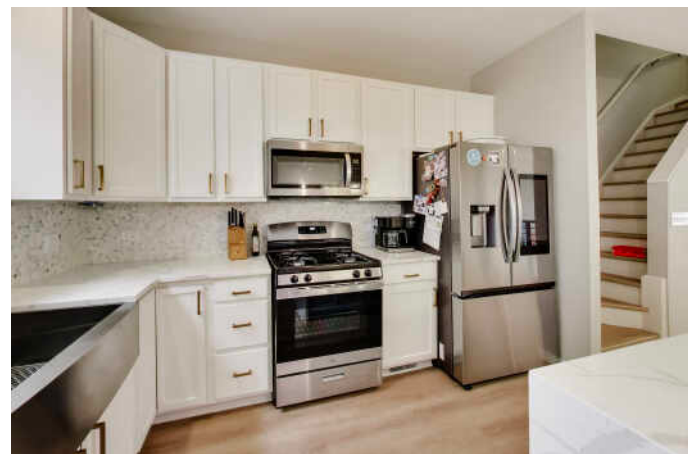


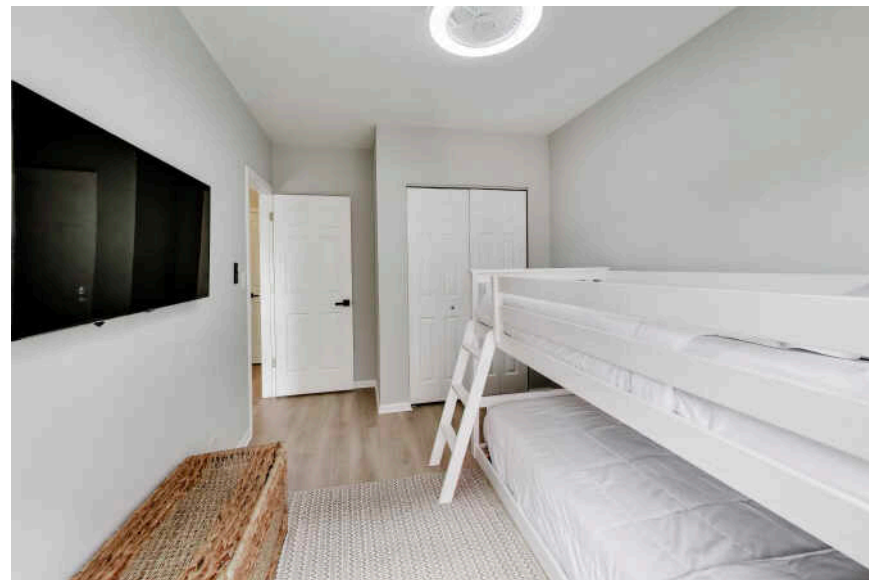
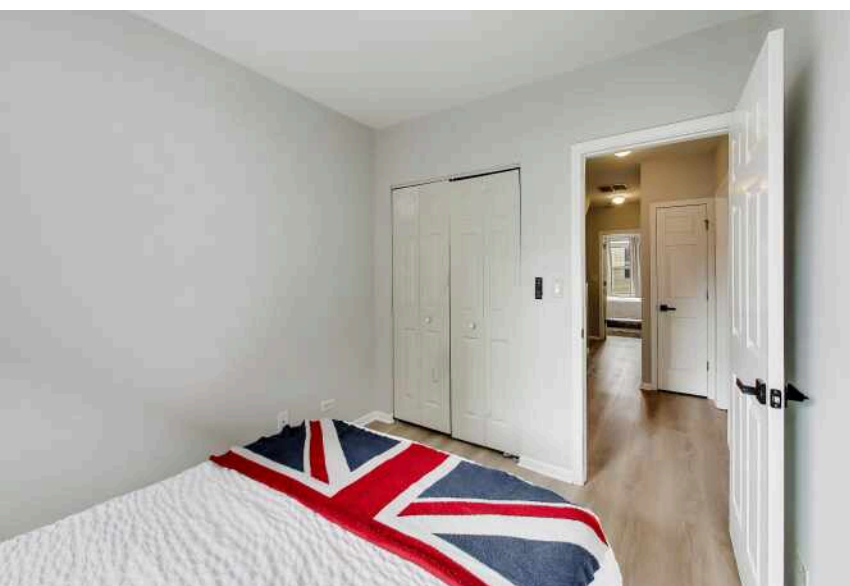
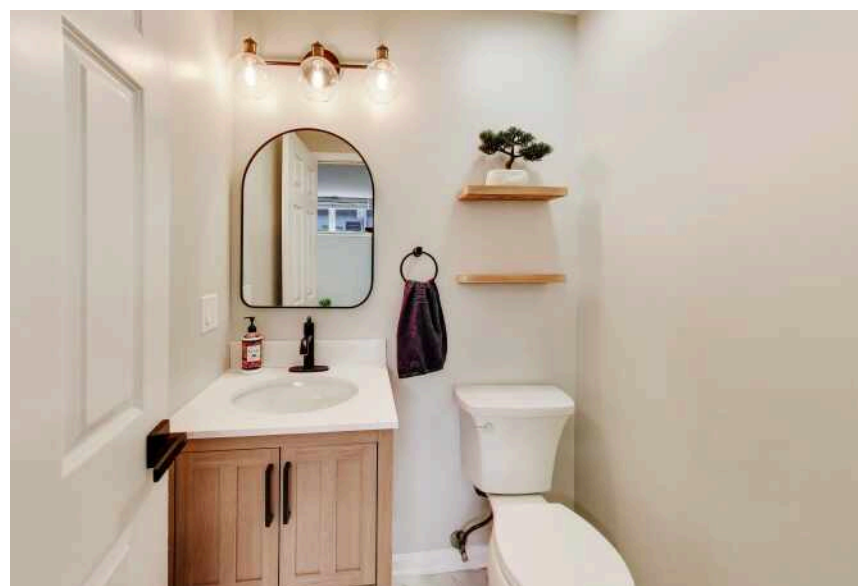
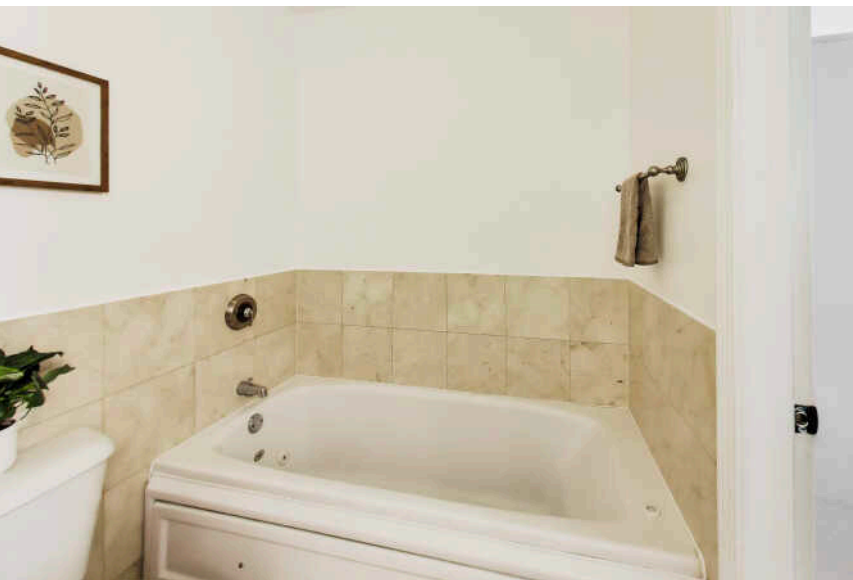
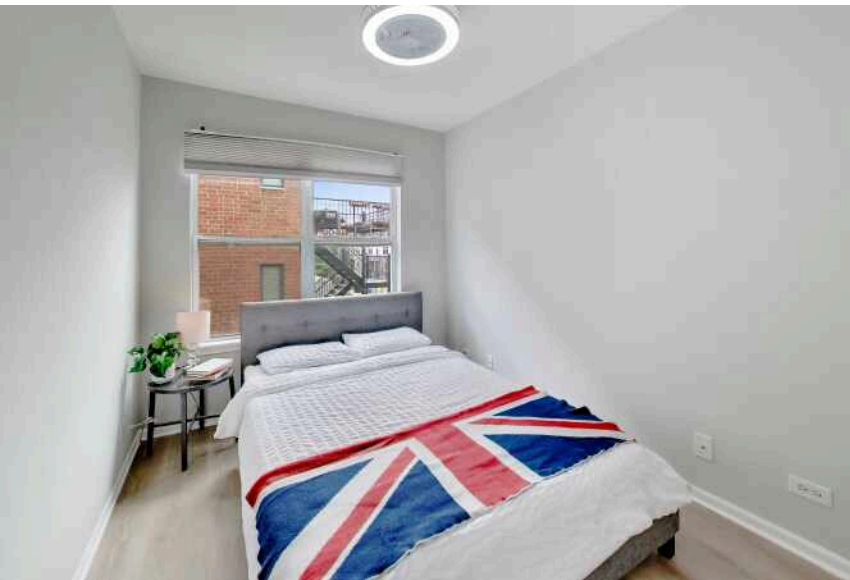
3 BEDROOM
2.5 BATH

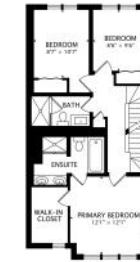
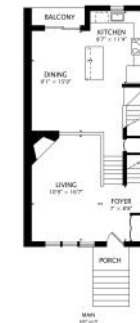
WELCOME HOME

- Prime Logan Square location just steps from Lucy Flower Park, The 606, and less than an 8-minute walk to the Blue Line. This spacious home lives like a single-family residence and offers an incredible private rooftop deck spanning almost the full footprint of the home with beautiful city views. Great opportunity for hosting and relaxing under the sun. The fully finished basement provides valuable additional living space and includes a convenient half bath. Thoughtfully updated throughout with new flooring, fresh paint, new appliances, a fully renovated kitchen, and two beautifully remodeled bathrooms. Truly turnkey and move-in ready, with all the major updates already done for you.











LOGAN SQUARE PROVES THAT IT IS HIP TO BE SQUARE AFTER ALL.

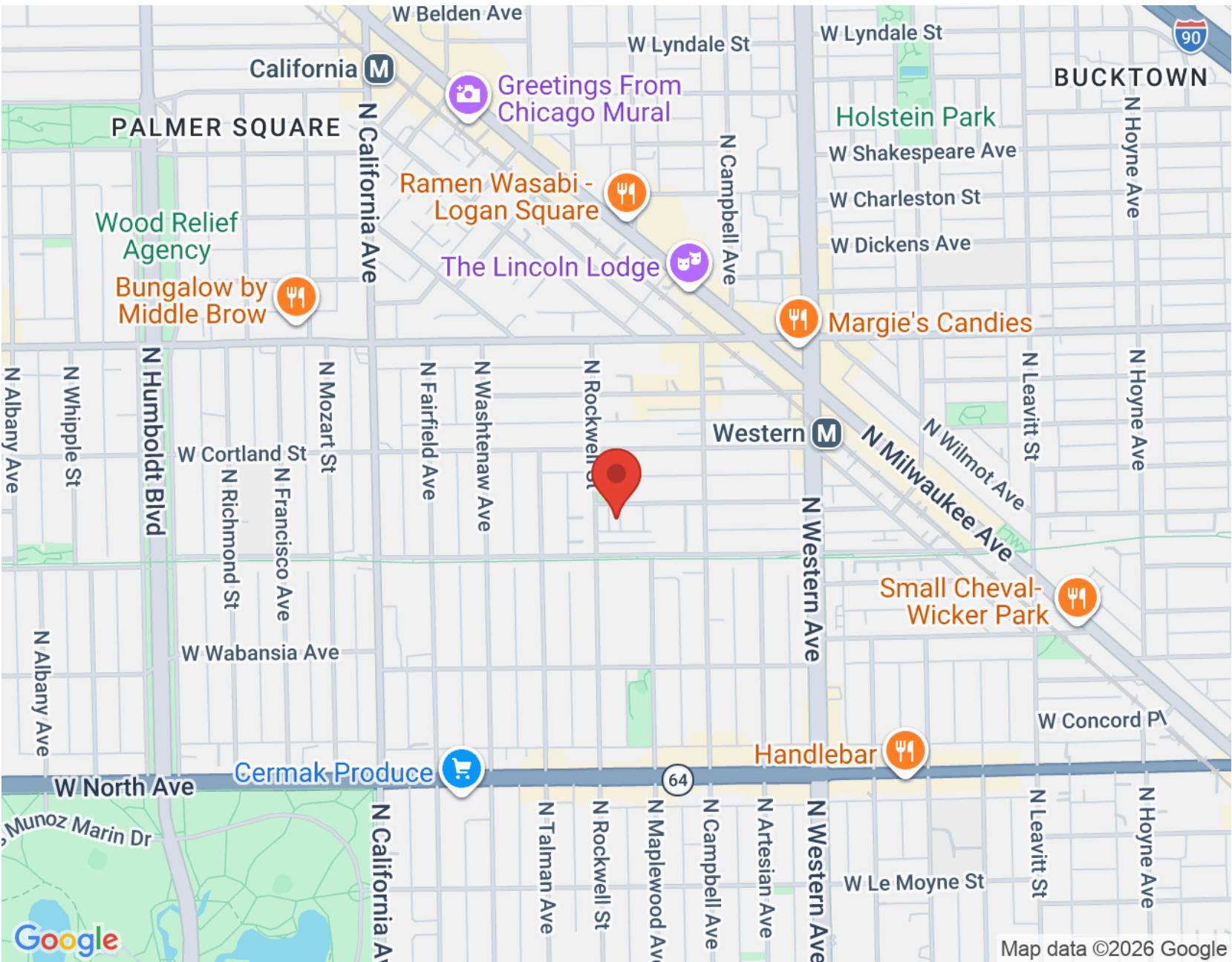
The neighborhood attracts residents with its artistic vibe, park-like boulevards, and thriving dining scene.

The Logan Square Boulevards District, lined with beautiful homes and mature trees, is a designated Chicago landmark.

Although it's surrounded by some of Chicago's trendiest areas for nightlife, the neighborhood definitely holds its own. Logan Square is home to locally-owned restaurants, bars, and bistros, including hotspots noted by *Bon Appétit* as among Chicago's best. Artists and musicians live and work in the neighborhood, performing and displaying their art at local coffee shops, cafes, and theaters.

Known for its historic greystones, large bungalows, and stately mansions, Logan Square has seen a boom of residential development, including condominiums, lofts, townhomes, three-flats, and single-family homes. While there is ample new construction, the community still retains its historic charm by repurposing and preserving its landmarks.

The neighborhood's easy access to the CTA Blue Line is another draw for residents along with The 606 trail.



NOTES _____



KIVA WENIG

1 2195751602

KIVA@ATPROPERTIES.COM

WWW.ATPROPERTIES.COM/SITE/KIVAWENIG