



25 CLAY COURT  
LAKE BLUFF

25 CLAY COURT · LAKE BLUFF



@properties | CHRISTIE'S  
INTERNATIONAL REAL ESTATE

LP LUXURY  
PORTFOLIO  
INTERNATIONAL



LISA TRACE BROKER

1 7087104104 mobile  
847.295.0700 office  
lisatrace@atproperties.com



SAMANTHA TRACE BROKER

1 8475710537 mobile  
847.295.0700 office  
samanthatrace@atproperties.com

◆ TRACE TEAM ◆

25 CLAY COURT · LAKE BLUFF



@properties | CHRISTIE'S  
INTERNATIONAL REAL ESTATE

LP LUXURY  
PORTFOLIO  
INTERNATIONAL



## 25 CLAY COURT

### FEATURES

Built in 2015, this exceptional 5,037-square-foot brick and stone estate sits on over an acre in a quiet cul-de-sac in Wimbledon Estates, offering privacy, elegance, and modern comfort. The home features soaring ceilings, hardwood floors, and beautifully designed living spaces throughout. The gourmet eat-in kitchen includes custom cabinetry, an oversized quartzite island, high-end stainless steel appliances, and a walk-in pantry, while a wet bar connects seamlessly to the dining room with custom millwork. The living room features plantation shutters, and the family room showcases a dramatic two-story beamed ceiling and gas fireplace. Enjoy a south-facing backyard with a paver patio, gas fire pit, and hot tub—perfect for entertaining. A mudroom and laundry room sit just off the four-car garage with epoxy flooring. A first-floor bedroom or office is adjacent to a full bath. Upstairs, two staircases lead to the expansive primary suite with a dressing room, wet bar, and two large walk-in closets. The luxurious bath includes a soaking tub, large shower, and double vanity. Three additional bedrooms complete the second level, including a Jack-and-Jill bath and an en-suite bedroom. The unfinished basement with tall ceilings is already plumbed for a bath and ready to be finished. Ideally located near downtown Lake Forest and Lake Bluff, this home offers space, style, and an exceptional location.



**LISA TRACE** BROKER

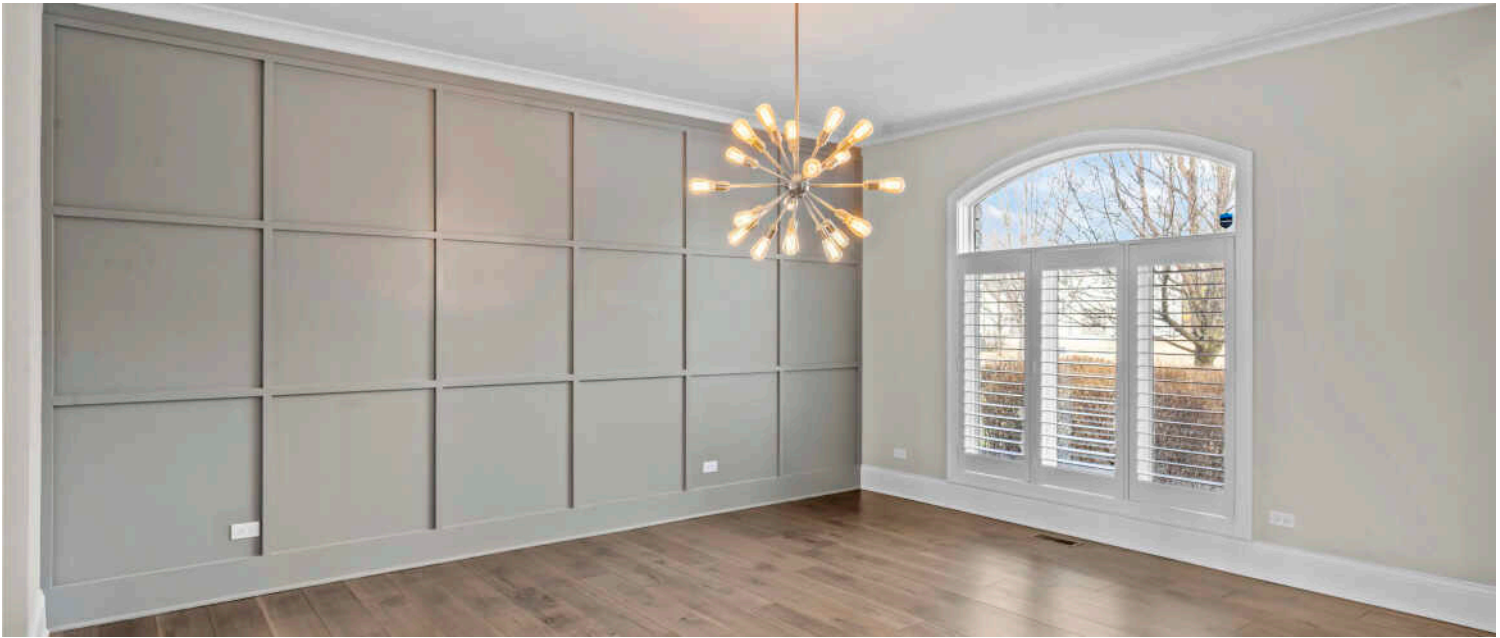
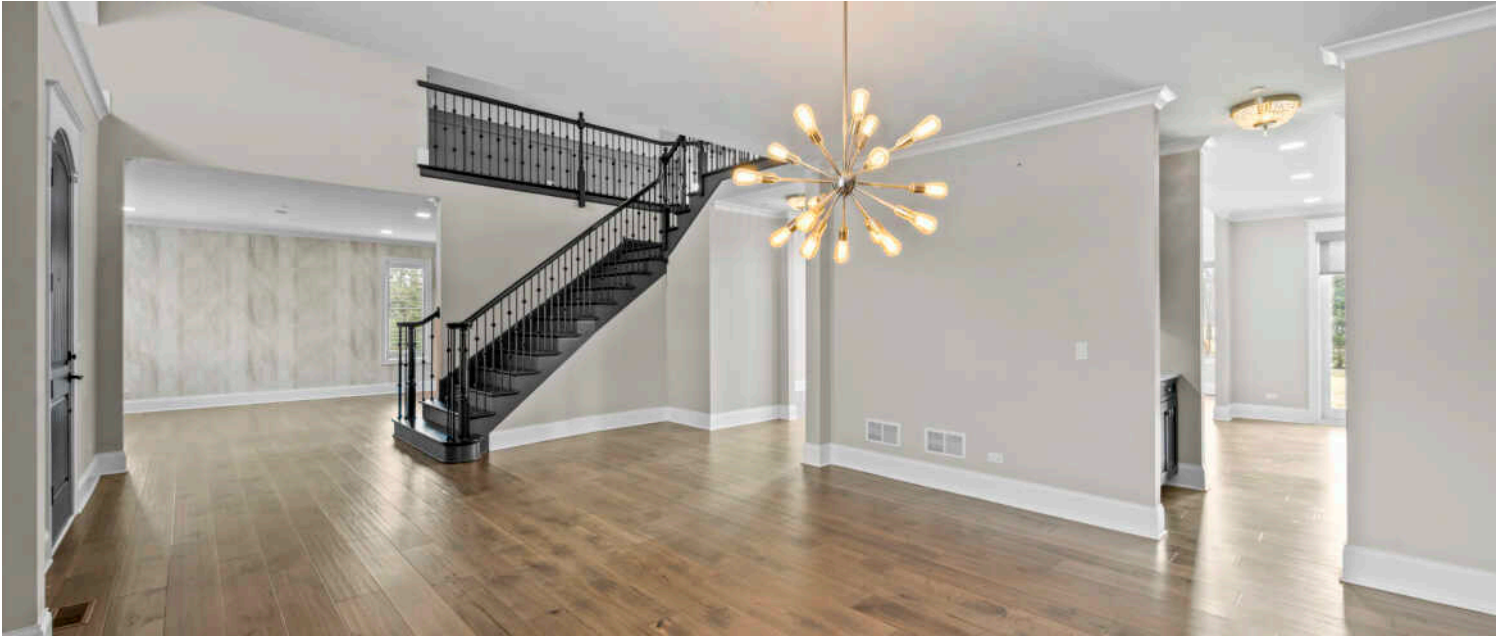
1 7087104104 mobile  
847.295.0700 office  
lisatrace@atproperties.com

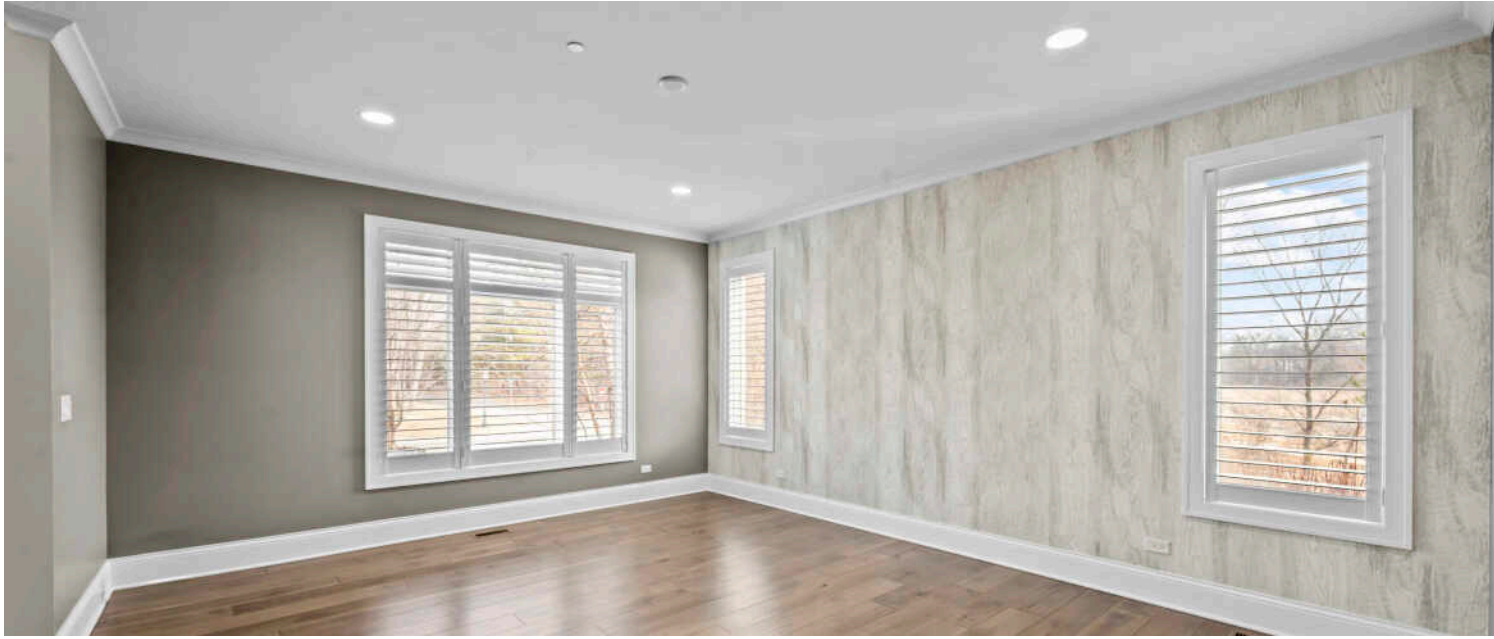


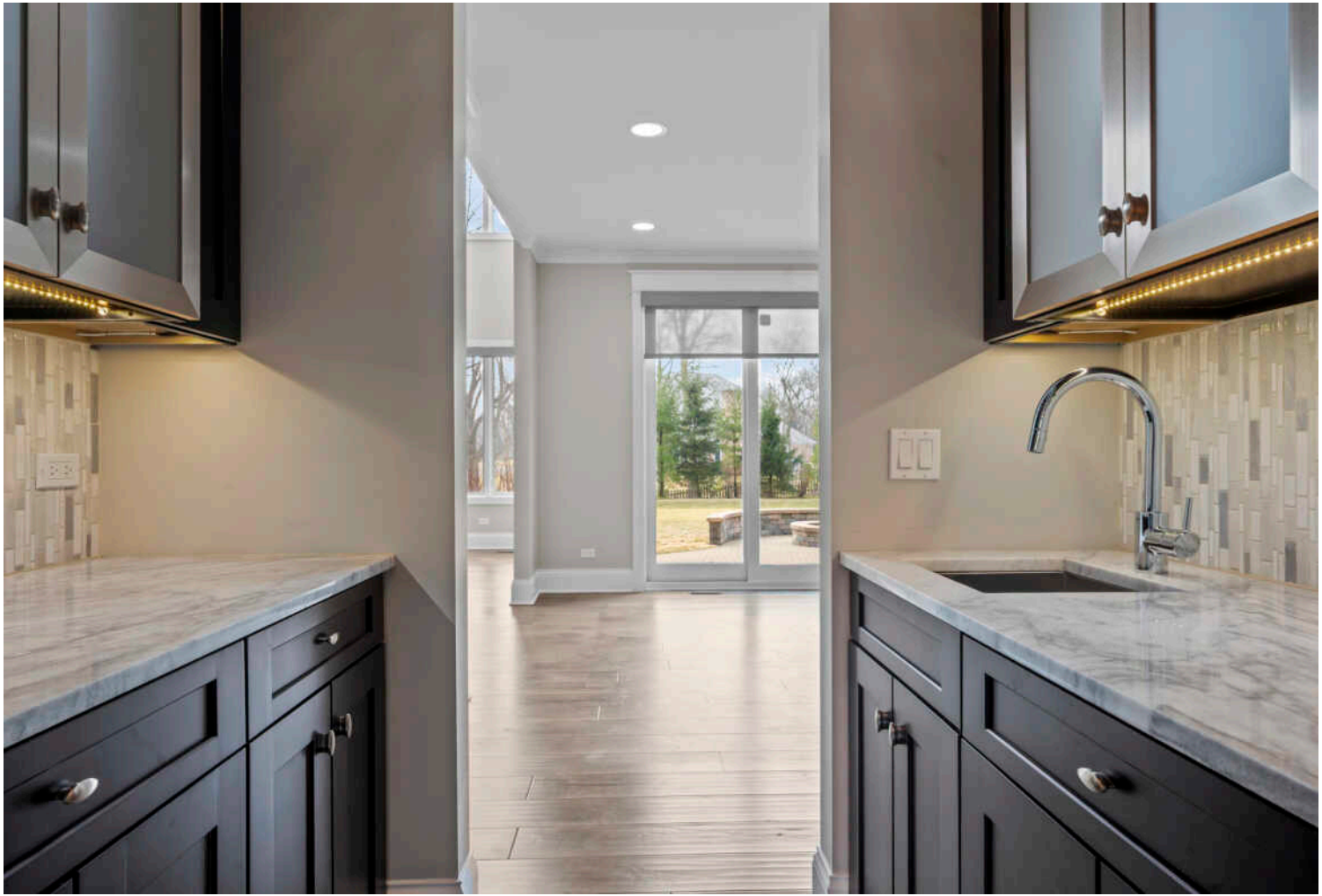
**SAMANTHA TRACE** BROKER

1 8475710537 mobile  
847.295.0700 office  
samanthatrace@atproperties.com





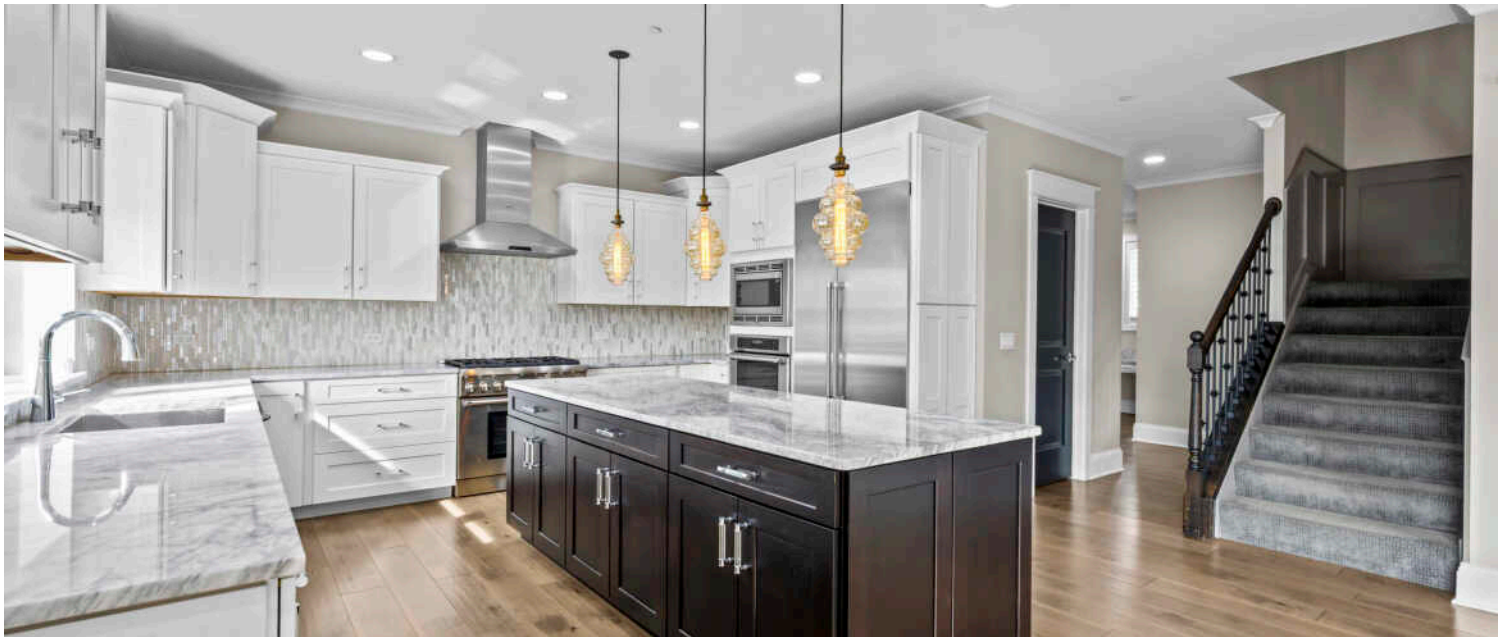














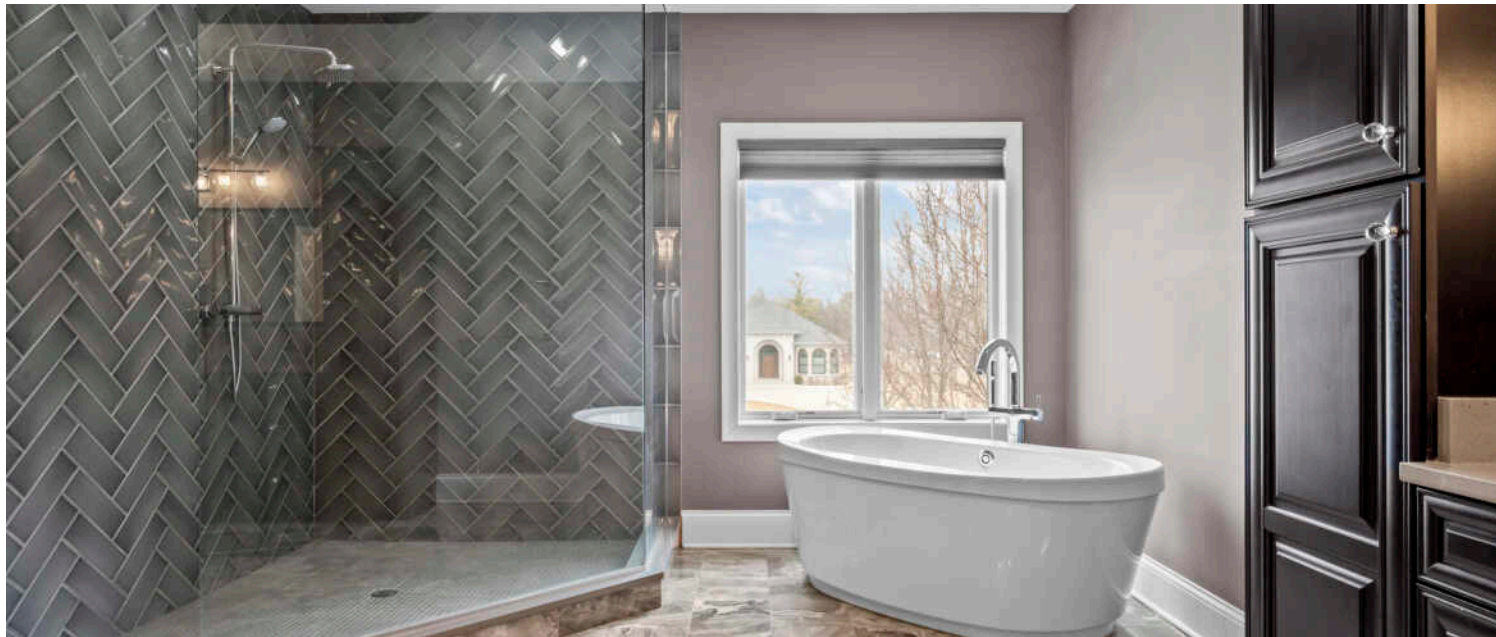


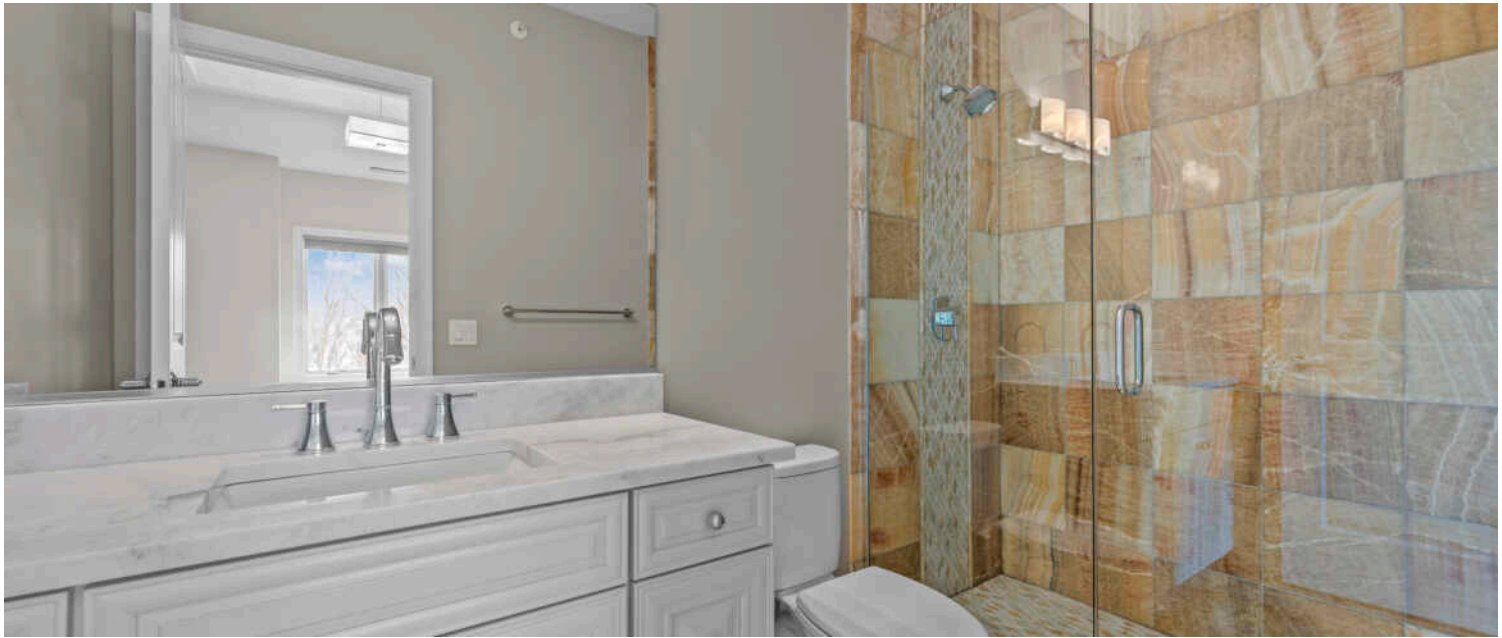






















**LAKE BLUFF** IS A RARE GEM. THE VILLAGE BOASTS A WELCOMING LAID-BACK LIFESTYLE, HISTORIC ARCHITECTURE, A THRIVING DOWNTOWN, AND A PRICELESS SENSE OF COMMUNITY.

*Locals love the annual community events that bring everyone together, from an outdoor concert series and farmers market to year-round celebrations and block parties.*

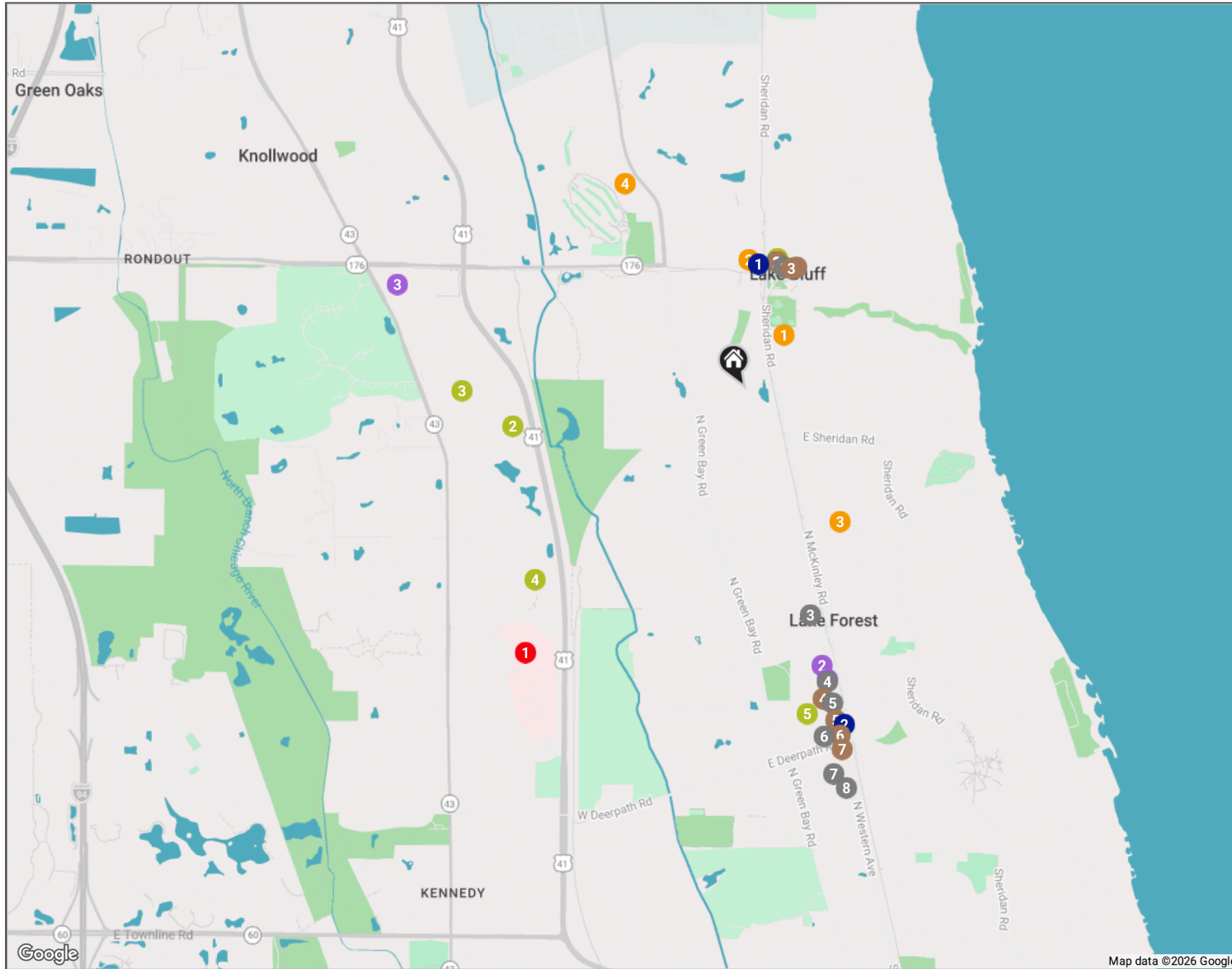
Each year, Lake Bluff hosts a number of special events – from art festivals and farmers markets to community barbeques, block parties, and a Fourth of July Parade. Its annual Halloween event brings out hundreds of ghouls and goblins, while the Bluffinia concert series brings residents together on the Village Green for a wide array of live music. Residents also enjoy scenic parks, recreational activities, an assortment of small boutiques and restaurants, and a beautiful lakefront with limited development.

A variety of architectural styles keep Lake Bluff interesting with Tudor, Colonial, Victorian, bungalow, and modern homes. Properties range from multi-million-dollar lakefront estates to condominiums and townhomes.

Residents find easy access to major interstates and U.S. Route 41, along with a Metra station that serves commuters headed to Chicago.

# NEIGHBORHOOD GUIDE MAP

25 CLAY COURT  
26



# NEIGHBORHOOD GUIDE

## RESTAURANTS \_\_\_\_\_

- 1 **Inovasi**  
28 EAST CENTER AVENUE, 0.5 MI
- 2 **Lake Bluff Brewing Company**  
16 EAST SCRANTON AVENUE, 0.5 MI
- 3 **Sophia Steak Lake Forest**  
181 E LAUREL AVE, 1.0 MI
- 4 **Ferentino's Pizzeria**  
842 NORTH WESTERN AVENUE, 1.2 MI
- 5 **Authentico Mexican Restaurant & Bar**  
770 NORTH WESTERN AVENUE, 1.3 MI
- 6 **Le Colonial Lake Forest**  
655 FOREST AVE, 1.5 MI
- 7 **Deer Path Inn**  
255 EAST ILLINOIS ROAD, 1.6 MI
- 8 **Egg Harbor Cafe**  
512 NORTH WESTERN AVENUE, 1.7 MI

## COFFEE \_\_\_\_\_

- 1 **Hansa Coffee and Wine Sellers**  
24 EAST SCRANTON AVENUE, 0.5 MI

## 2 **Bluffington's Cafe** 113 EAST SCRANTON AVENUE, 0.5 MI

## 3 **Reverie Petit Cafe** 91 EAST SCRANTON AVENUE, 0.5 MI

## 4 **Hometown Coffee & Juice** 231 EAST WISCONSIN AVENUE, 1.3 MI

## 5 **Gerhard's Elegant European Desserts** 720 NORTH WESTERN AVENUE #1820, 1.4 MI

## 6 **Starbucks Coffee Company** 672 NORTH WESTERN AVENUE, 1.5 MI

## 7 **Dunkin'** 620 NORTH WESTERN AVENUE, 1.5 MI

## GROCERY \_\_\_\_\_

## 1 **The Fresh Market** 850 NORTH WESTERN AVENUE, 1.2 MI

## 2 **Jewel-Osco** 890 NORTH WESTERN AVENUE, 1.2 MI

## 3 **Heinen's Grocery Store** 201 NORTH WAUKEGAN ROAD, 1.5 MI

## GYM \_\_\_\_\_

## 1 **Toned Yoga - Lake Bluff** 600 WALNUT AVENUE, 0.6 MI

## 2 **Quest Performance Training** 37 SHERWOOD TERRACE STE 132, 1.0 MI

## 3 **The Racquet Club of Lake Bluff** 945 NORTH SHORE DRIVE, 1.2 MI

## 4 **Northwestern Medicine Lake Forest Health & Fitness Center** 1200 NORTH WESTMORELAND ROAD, 1.2 MI

## 5 **BIRD barre** 188 EAST WESTMINSTER, 1.4 MI

## MEDICAL \_\_\_\_\_

## 1 **Northwestern Medicine Catherine Gratz Griffin Lake Forest Hospital** 1000 N WESTMORELAND RD, 1.4 MI

## SCHOOLS \_\_\_\_\_

## 1 **Lake Bluff Middle School** 31 EAST SHERIDAN PLACE, 0.3 MI

## 2 **Forest Bluff School** 8 WEST SCRANTON AVENUE, 0.5 MI

## 3 **Lake Forest High School** 1285 NORTH MCKINLEY ROAD, 0.7 MI

## 4 **Lake Bluff Elementary School** 350 WEST WASHINGTON AVENUE, 1.0 MI

## TRANSIT \_\_\_\_\_

## 1 **Lake Bluff** METRA - UNION PACIFIC NORTH, 0.5 MI

## 2 **Lake Forest** METRA - UNION PACIFIC NORTH, 1.4 MI

@properties® | CHRISTIE'S  
INTERNATIONAL REAL ESTATE

*Leading* REAL ESTATE  
COMPANIES  
OF THE WORLD®

LP  
LUXURY  
PORTFOLIO  
INTERNATIONAL

