

2605 ARLINGDALE DRIVE
PALATINE





ROOM DIMENSIONS

- FOYER : 12' × 7'
- LIVING ROOM : 21' × 15'
- FAMILY ROOM : 25' × 13'
- DINING ROOM : 13' × 12'
- KITCHEN : 26' × 19'
- PRIMARY BEDROOM : 18' × 16'
- WALK IN CLOSET : 10' × 8'
- SECOND BEDROOM : 17' × 12'
- THIRD BEDROOM : 16' × 12'
- FOURTH BEDROOM : 12' × 10'
- FIFTH BEDROOM : 12' × 12'
- RECREATION ROOM : 19' × 17'
- LAUNDRY ROOM : 8' × 8'

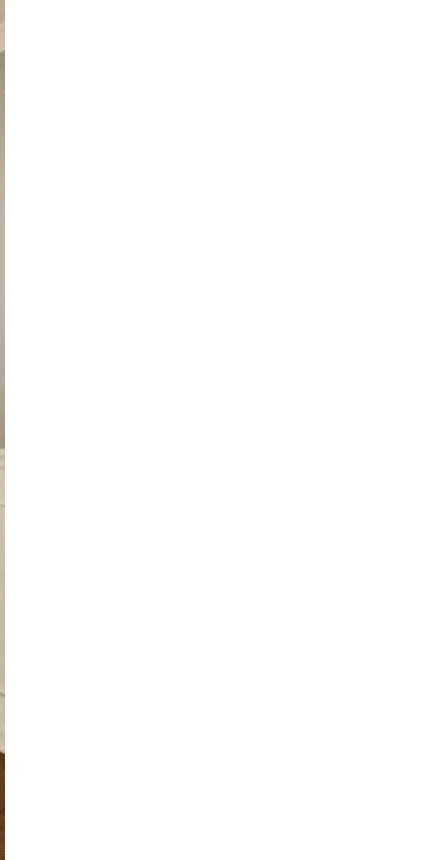
5 BEDROOM

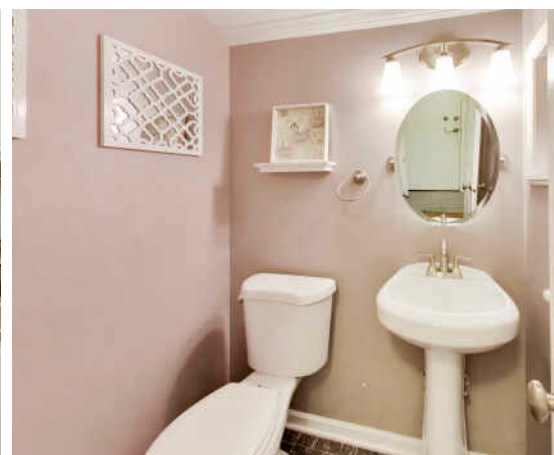
3.1 BATH

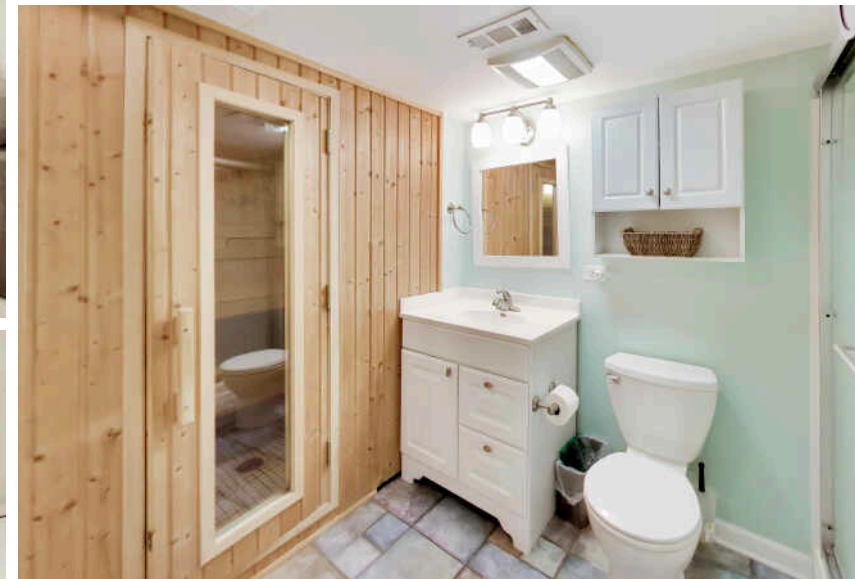
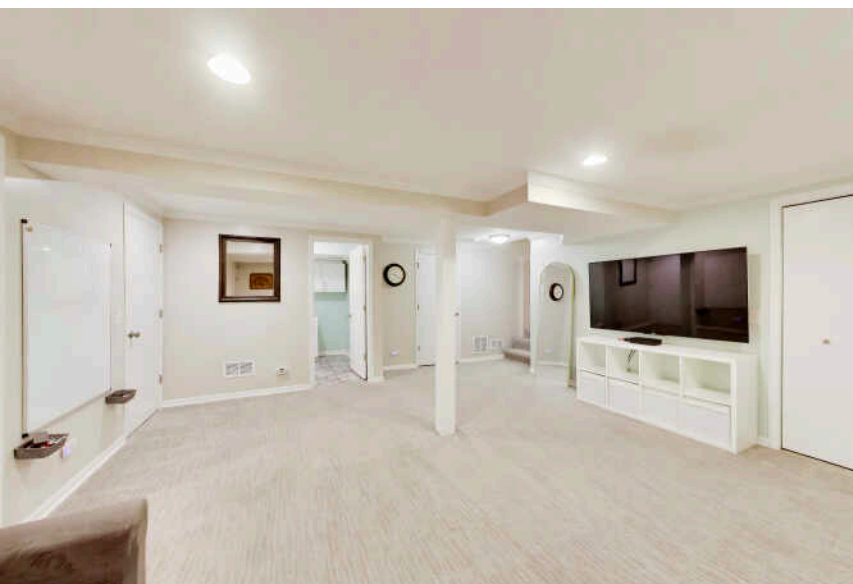
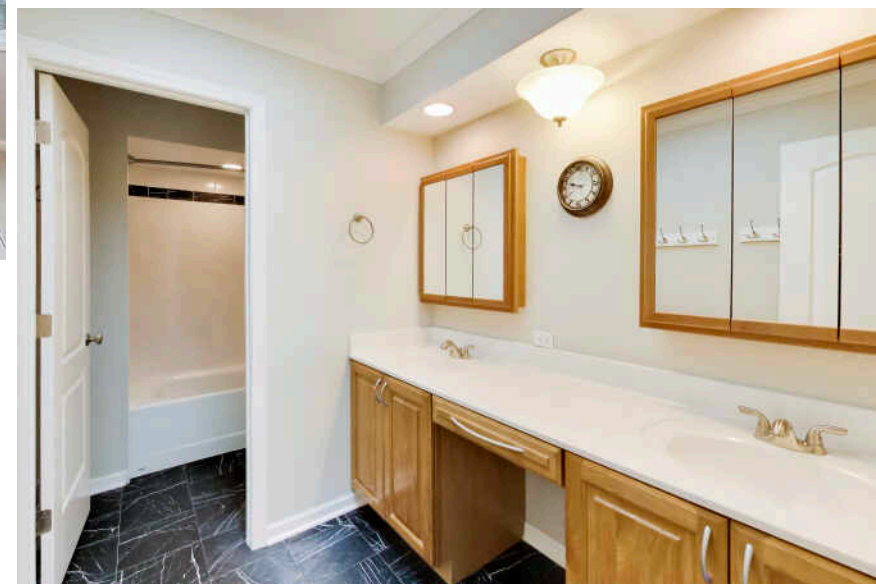
TAXES: \$14,514

PROPERTY INFORMATION & DETAILS

Nestled on over a half-acre lot in a peaceful cul-de-sac, this stunning home is truly one you don't want to miss. Step into the inviting foyer and be greeted by beautiful hardwood floors that flow throughout the main level, enhancing the warm and welcoming atmosphere. The spacious living room boasts an abundance of windows flooding the space with natural light, complemented by a custom built-in wall of cabinets that adds both elegance and functionality. The formal dining room provides the perfect setting for entertaining guests, seamlessly flowing from the living room. At the heart of this home is the expansive chef's kitchen, featuring endless cabinetry, a large island with extra bar seating, generous storage, and not one but two sinks-ideal for culinary enthusiasts. Vaulted ceilings with skylights, space for an eat-in kitchen table, and a dedicated desk area make this kitchen as practical as it is impressive. The open concept layout provides direct access to the family room with a gas fireplace and built-ins. Conveniently located off the garage is a mudroom/drop zone, perfect for staying organized. Step outside to your private backyard oasis, complete with a large deck and brick patio surrounded by lush greenery for ultimate privacy and endless outdoor enjoyment. Upstairs, discover three spacious bedrooms and a full bathroom featuring a double vanity. The luxurious primary suite occupies its own level, offering two organized walk-in closets and a private bath with a double vanity and jacuzzi tub/shower-a true sanctuary to unwind. The finished basement adds even more living space, including a recreational area perfect for guests, plus a built-in sauna room and full shower for relaxation and convenience. Additional updates include AC (2014), furnace (2013), concrete driveway (2020), and a whole house generator (2021). Ideally situated close to Harper College, with easy access to Rt 53 and Rt 90, and near Schaumburg's Woodfield Mall, restaurants, and nightlife. Commuters will appreciate access to Metra at both downtown Palatine and Arlington Park stations.











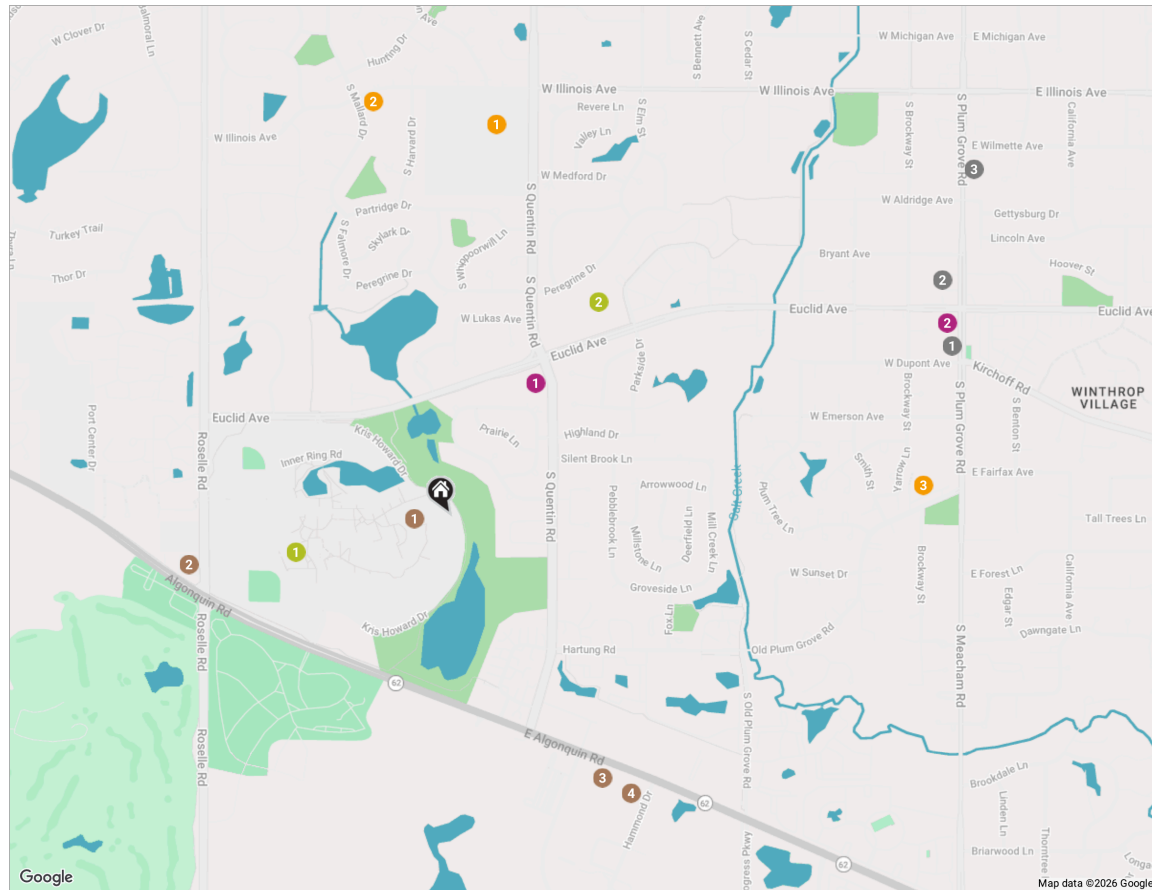
THE VILLAGE OF **PALATINE** HAS MASTERED THE ART OF BALANCE.

The growing community has a healthy mix of residents who enjoy its friendly suburban lifestyle and businesses that fuel the local economy.

The village embraces growth to support a wealth of amenities and services. The Palatine Park District has 28 parks, an 18-hole golf course, and a variety of classes from fitness and sports to arts and crafts. Palatine offers scenic views with winding trails, beautiful residential areas, and nearby Deer Grove Forest Preserve.

Palatine's downtown business district is both charming and self-sufficient for residents. Restaurants include a mix of local favorites from classic eateries to upscale breweries, as well as a variety of local bars. The village hosts several street festivals and a popular farmers market.

Commuters have access to the Chicago Loop with the Palatine Metra station and I-90. The nearby Chicago Executive Airport offers private and corporate aircraft services.



RESTAURANTS

- 1 Anna's Red Apple
2121 SOUTH PLUM GROVE ROAD,
1.2 MI
- 2 Ramen House Shinchan
1939 SOUTH PLUM GROVE ROAD,
1.3 MI
- 3 Donkey Inn
923 SOUTH PLUM GROVE ROAD, 1.4 MI

COFFEE

- 1 Starbucks Coffee Company
1200 ALGONQUIN ROAD, 0.1 MI
- 2 The PRIDE Of Palatine
1776 SOUTH ROSELLE ROAD, 0.6 MI
- 3 McDonald's
775 EAST ALGONQUIN ROAD, 0.7 MI
- 4 Donut Drop
835 EAST ALGONQUIN ROAD, 0.8 MI

SHOPPING

- 1 Walgreens
805 WEST EUCLID AVENUE, 0.4 MI
- 2 CVS
2045 SOUTH PLUM GROVE ROAD,
1.2 MI

GYM

- 1 Foglia Foundation Health
and Recreation Center
BUILDING M, 0.4 MI

- 2 Crunch Fitness - Palatine
722 WEST EUCLID AVENUE, 0.6 MI

SCHOOLS

- 1 William Fremd High School
1000 SOUTH QUENTIN ROAD ROOM
200, 0.9 MI
- 2 Hunting Ridge Elementary
School
1105 WEST ILLINOIS AVENUE, 1.0 MI
- 3 Plum Grove Middle School
2600 SOUTH PLUM GROVE ROAD,
1.1 MI

NOTES



AMY DIAMOND

847.497.0230

AMY@DEALWITHDIAMOND.COM

DEALWITHDIAMOND.COM



@properties®

CHRISTIE'S
INTERNATIONAL REAL ESTATE