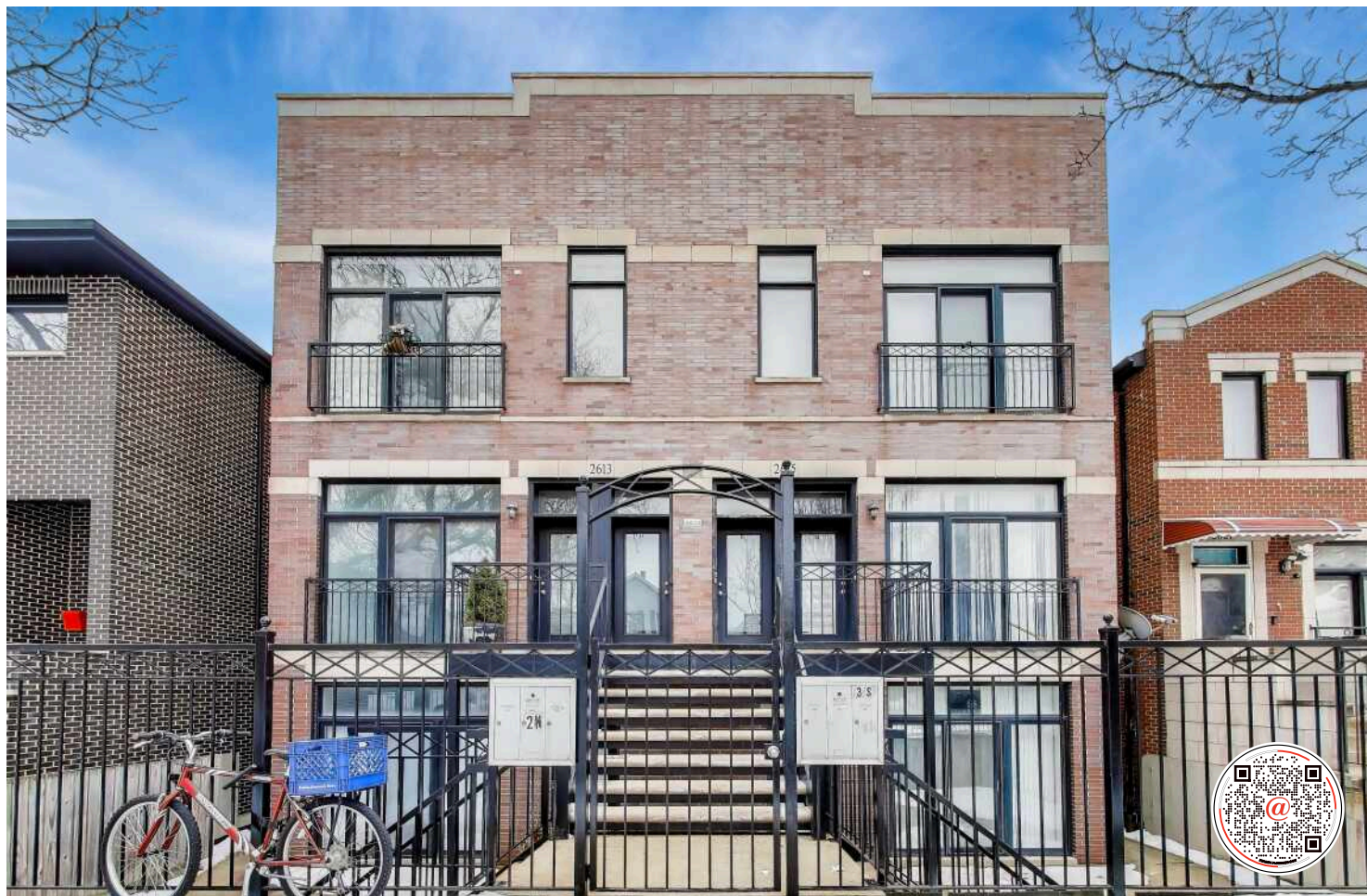
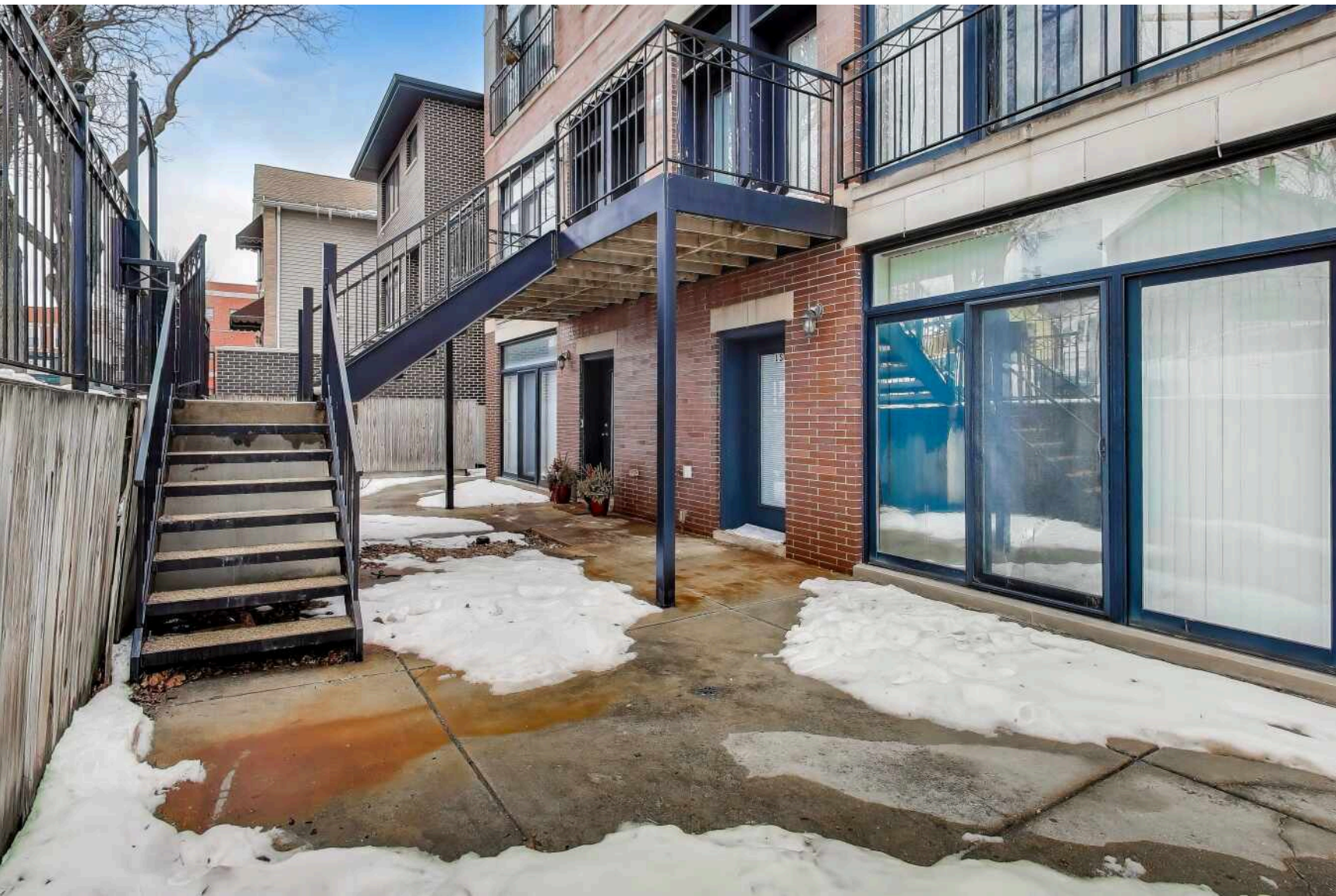


2615 S LOWE AVENUE #1S
BRIDGEPORT



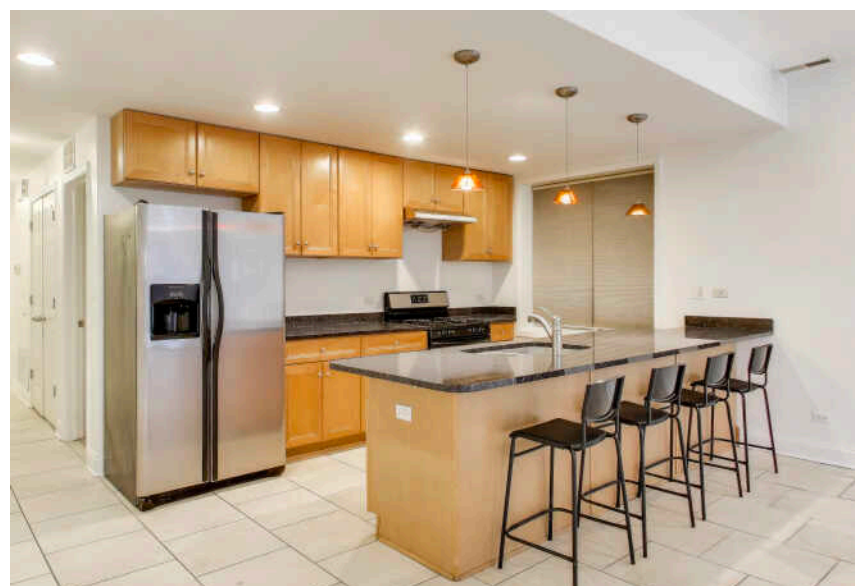
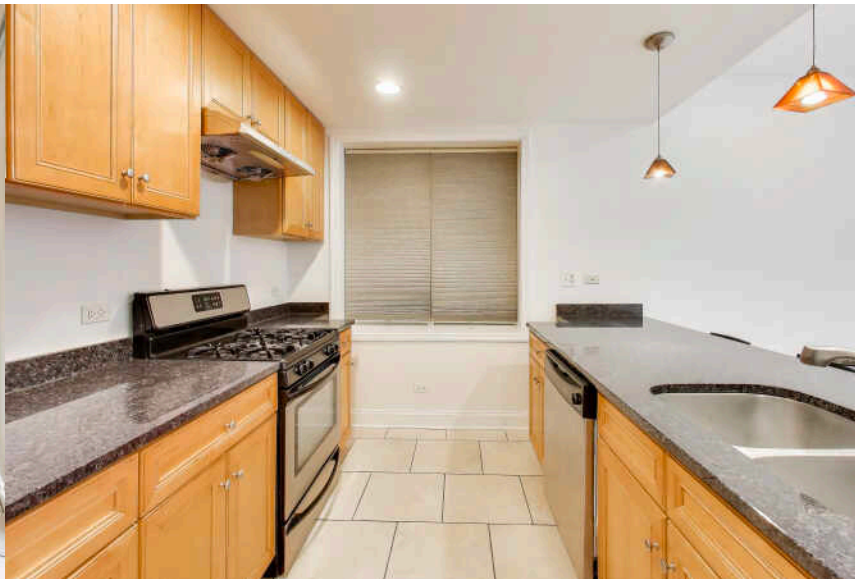
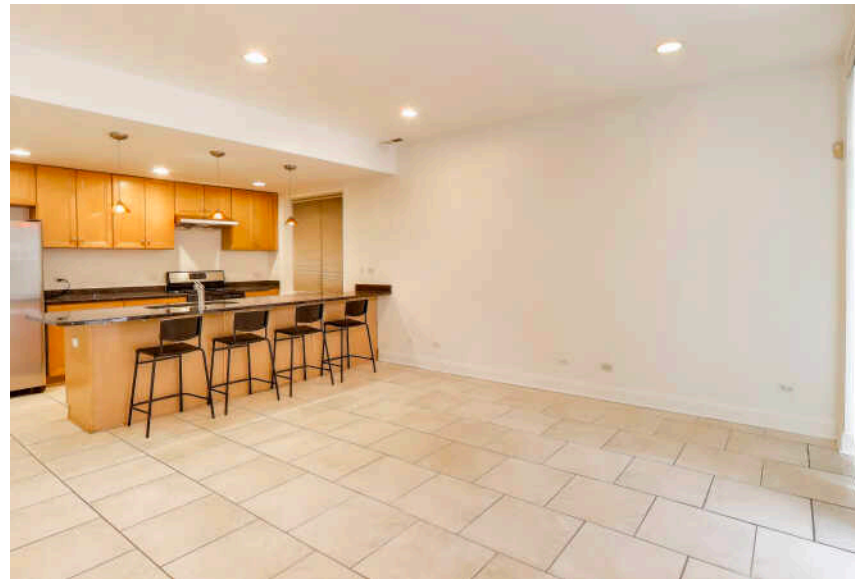


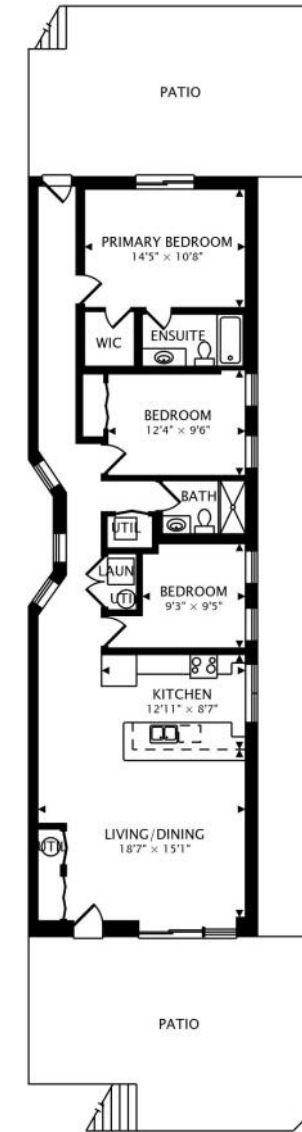
PERFECT HOME FOR PERSONAL USE AND FUTURE INVESTMENT

This lovely condo offers a seamless layout. Enter into an airy living room & dining area next to the kitchen with a beautiful, large granite-top peninsula, stainless steel appliances, and maple cabinets. The hallway gives access to each bedroom: the third bedroom is perfect for an office or home gym, the second bedroom could be a nursery or guest room, and the primary bedroom offers direct access to the back covered patio. You have a newer stacked Samsung washer/dryer for in-unit laundry, and one outdoor parking spot in the rear of the building. Newer water heater, and brand new carpet! Two outdoor spaces offer plenty of opportunity for entertaining or leisure. Make this home yours today!

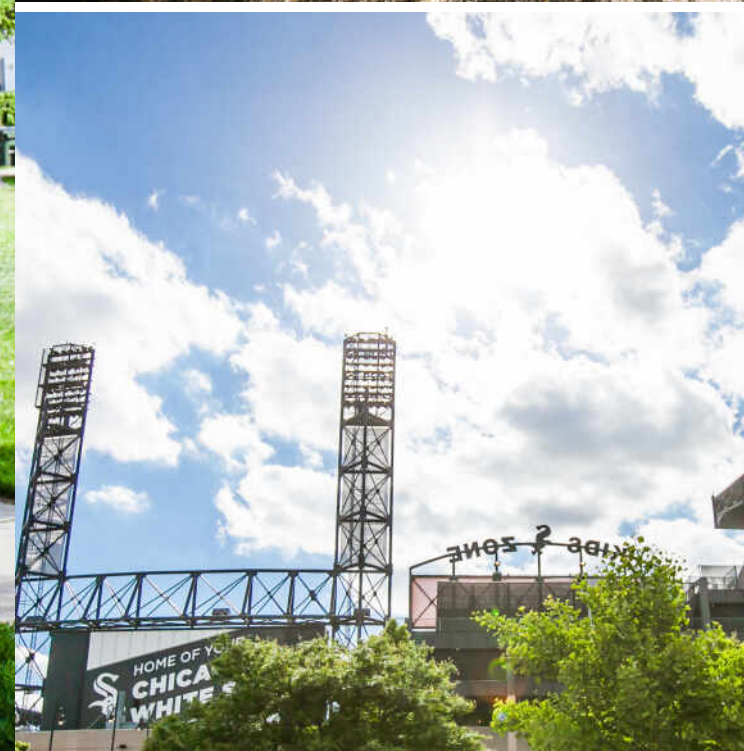
- No pet restrictions
- No rental restrictions

3 BEDROOM
2 BATH
TAXES: \$6029.22
ASSESSMENTS: \$230





1355 sq ft + 795 sq ft PATIOS



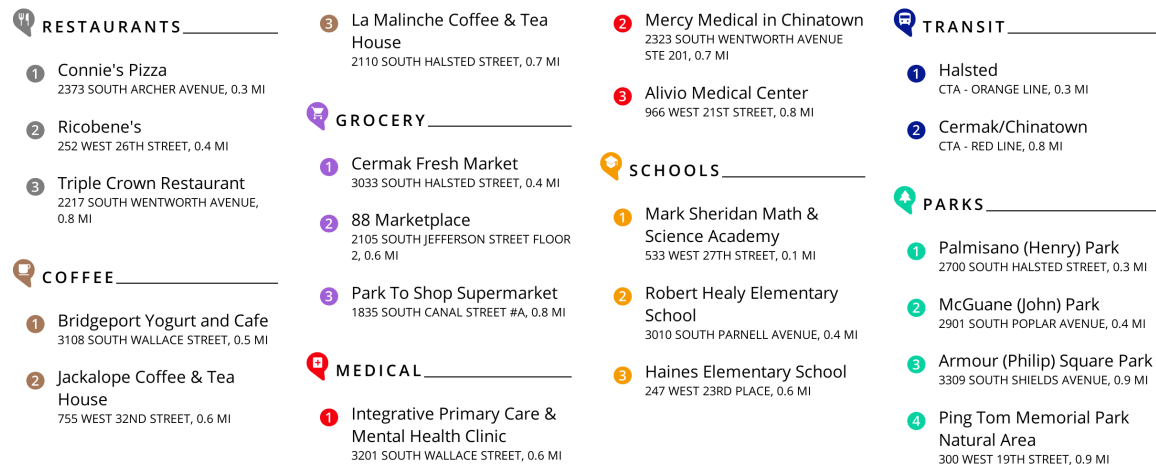
BRIDGEPORT IS THE BIRTHPLACE OF FIVE CHICAGO MAYORS AND THE HOME OF THE CHICAGO WHITE SOX. BUT THAT'S ONLY PART OF ITS STORY.

Today, the close-knit neighborhood is experiencing a renaissance of sorts. In recent years, residential developers have jumped on opportunities to convert older warehouses and manufacturing plants into loft homes. In addition to converted warehouses, new construction single-family homes and three-flat walk-up condominiums are springing up alongside Bridgeport's historic bungalows.

Bridgeport has become a thriving artists' community with multiple galleries, the Zhou B Art Center, and neighborhood art festivals. The Bridgeport Art Center, occupying the former 500,000-square-foot Spiegel Catalog Warehouse, provides a stunning creative space with incredible views for artists and events.

For the sports-minded, the excitement of a Major League Baseball game is right up the street when the White Sox play at Guaranteed Rate Field. Getting to the ballpark is as easy as taking the Red Line, which is located along the eastern side of the community.

Residents also enjoy being in close proximity to a popular brewery as well as local restaurants that offer a variety of cuisines.

[illegible]



HARMONY ZHANG

520.349.4886

HARMONY@HUNTCHICAGO.COM



All specifications, features, designs, price, assessments, taxes and materials are subject to change without notice. Depicted floor plans and architectural renderings are only an artist's impression.

