



2615 WHITCHURCH LANE

Naperville

@properties®





- Stunning Executive Home on Large Lot
- Gourmet Kitchen with Cherry Cabinets and Granite Counters
- Two Story Family Room with Custom Fireplace
- Large Master Retreat with Whirlpool Tub
- 4.1 Baths with Granite Counters and Newer Fixtures
- Finished Basement with Kitchenette and Media Room
- Beautiful Backyard with Professional Landscaping
- Walk to Clubhouse, Pool and Tennis Courts



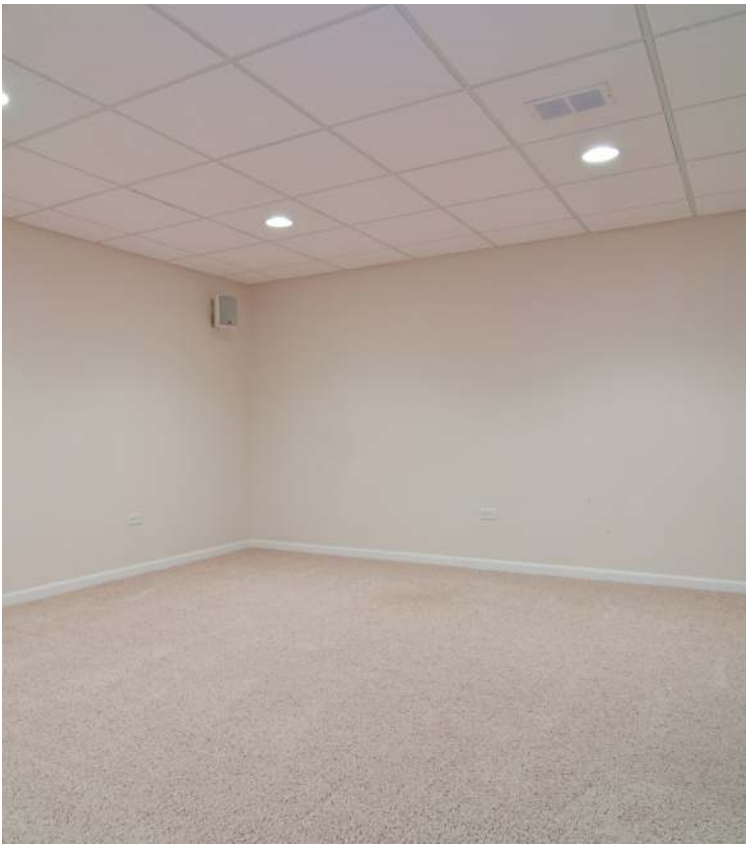


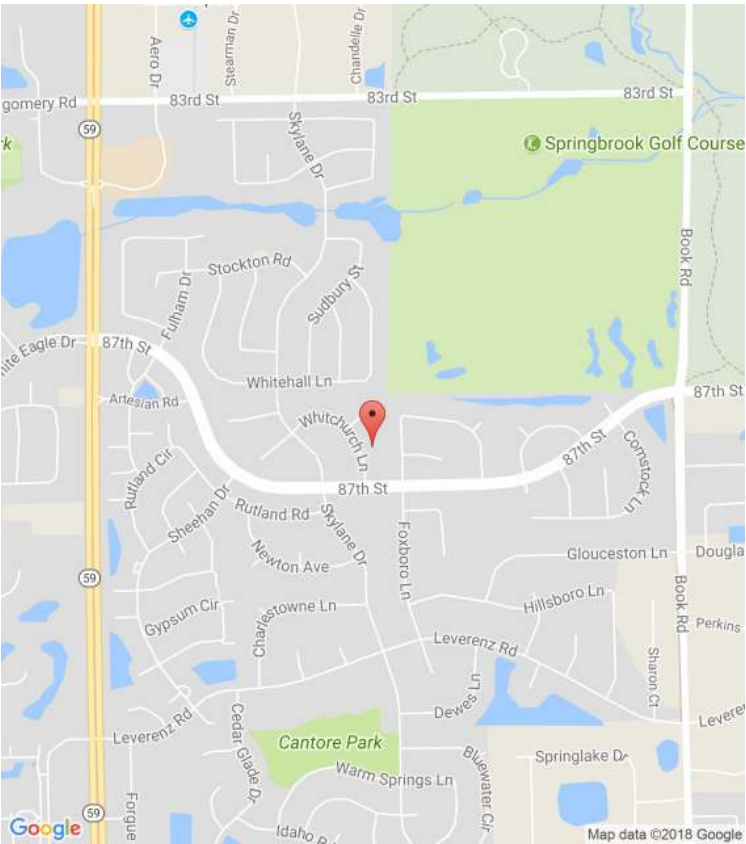
















Stop looking, start finding® atproperties.com  

2615WHITCHURCH.INFO



Jeanne DeSanto
(847) 525-6399
jeannesells@atproperties.com



Ron Reda
(708) 227-6076
ronsells@atproperties.com