

2621 LAKE AVENUE  
WILMETTE







#### ROOM DIMENSIONS

LIVING ROOM : 15' × 21'

FAMILY ROOM : 11' × 23'

DINING ROOM : 12' × 18'

KITCHEN : 6' × 17'

PRIMARY BEDROOM : 15' × 18'

SECOND BEDROOM : 13' × 13'

THIRD BEDROOM : 14' × 15'

FOURTH BEDROOM : 11' × 13'

5 BEDROOM

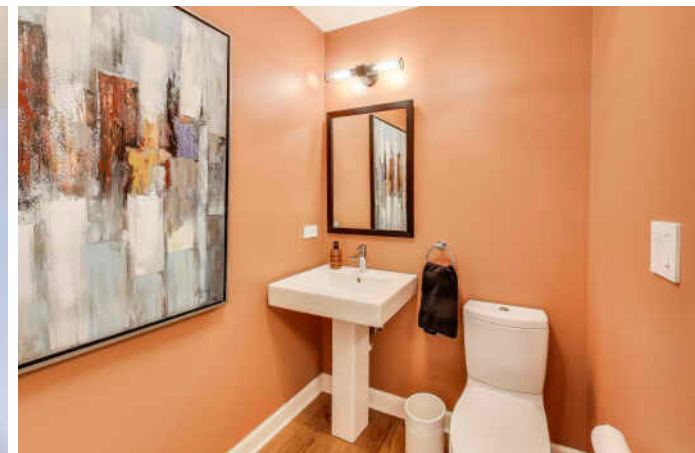
6 BATH

TAXES: \$16,039

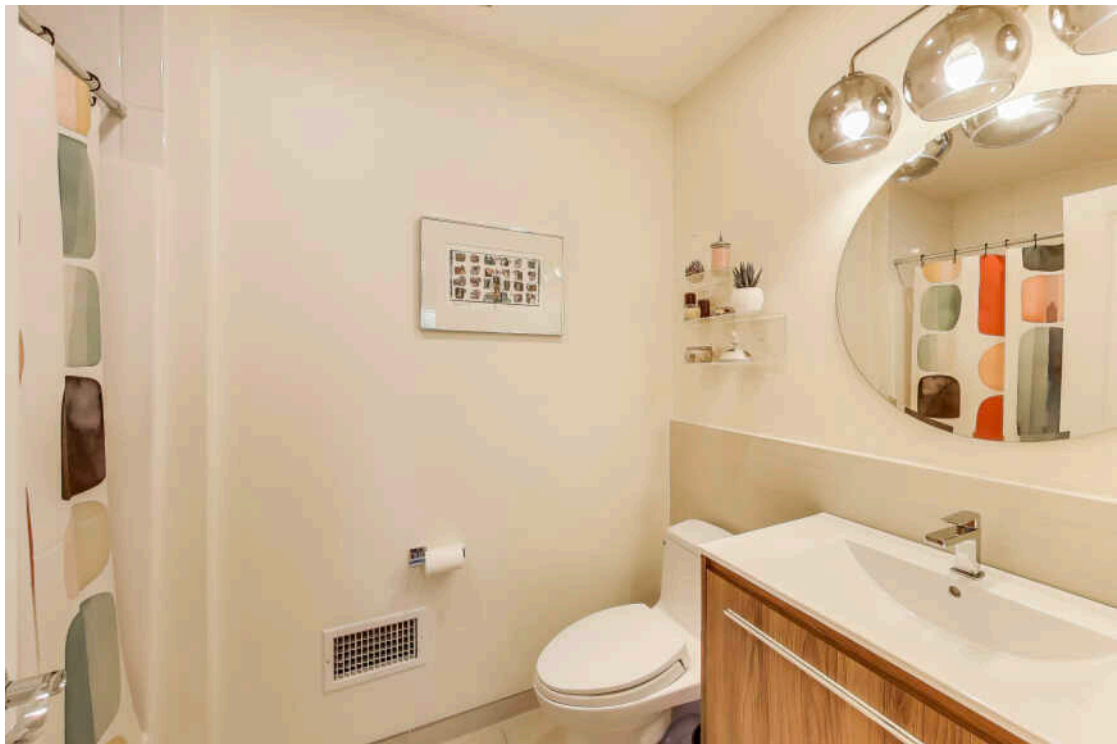
## 2621 LAKE AVE - A HOME THAT HAS IT ALL

More than you could ever expect! Completely renovated with a two-story addition, this home truly lives like new. Every major component has been updated- mechanicals, appliances, flooring, paint, closets, and gorgeous light fixtures throughout. The chef's kitchen features Taj Mahal quartzite counters, a new induction cooktop, double ovens, abundant storage, and open flow to the eat-in area and living space. With 5 bedrooms (including a main-floor ensuite and lower-level guest suite) and 4 full + 2 half baths, the layout blends style and everyday functionality. Upstairs, three spacious bedrooms include a dream primary suite with a jaw-dropping walk-in closet, jet shower, dual vanities, surround-sound bath, and in-mirror TV. The second floor also boasts a true laundry room with custom cabinetry, plus a smartly designed double bath perfect for siblings. Guests can enjoy the Murphy bed suite in the lower level or the main-floor ensuite/home office with custom-built-ins. The third floor impresses with a massive rec space and a fully equipped home theater. Outdoors, the backyard is designed for entertaining with a living area, pull-down movie screen, and plenty of space. A newly redone driveway accommodates 7+ cars plus a 2-car garage-making Lake Avenue living easy. Set in a prime location with effortless access to all three schools, making day-to-day life remarkably convenient.













RANKED BY *CHICAGO* MAGAZINE AS ONE OF THE CHICAGO AREA'S BEST PLACES TO LIVE, **WILMETTE** IS A VIBRANT TOWN WITH A WEALTH OF AMENITIES.

When it comes to housing, there's no shortage of architectural styles and price points in this lakefront community. Quintessential Cape Cod, Victorian, and Colonial homes line the village's historic streets, many of which are paved with clay-fired bricks from the 1800s. In addition to single-family homes, there are beachfront condominiums and townhomes. While well-kept homes maintain Wilmette's rich architectural history in all of its glory, new construction attests to the village's enduring popularity.

Residents also have access to nationally recognized New Trier High School, located in Winnetka.

Wilmette's Metra station and access to I-94 make commuting to downtown Chicago a breeze, but there's plenty of reasons to stay local. At the heart of town is the Village Center, where you'll find specialty stores, restaurants, and the Wilmette Theatre. Along Sheridan Road there is Plaza del Lago, providing more shops and services to locals. Meanwhile, ample recreational activities are available at Gillson Park and beach, Wilmette Harbor, and the Centennial Recreation Complex, which includes swimming, tennis, and ice skating.

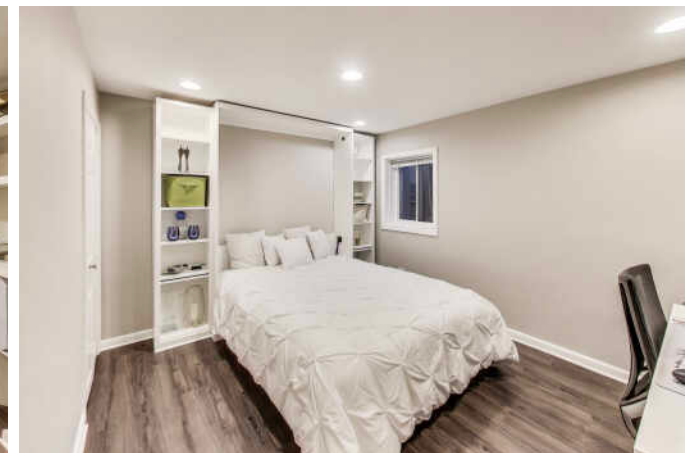
















## KEKI CANNON

312.860.3390

8478810200

KEKI@ATPROPERTIES.COM

WWW.KEKICANNON.COM

*keki*  
CANNON