

**2625 W BELDEN AVENUE**  
LOGAN SQUARE





#### ROOM DIMENSIONS

LIVING ROOM : 18' × 22'

DINING ROOM : 11' × 15'

KITCHEN : 11' × 15'

PRIMARY BEDROOM : 9' × 14'

SECOND BEDROOM : 7' × 12'

RECREATION ROOM : 25' × 13'

UTILITY ROOM : 15' × 14'

## LOGAN SQUARE "STEALTH" HOUSE

Beautiful on Belden: industrial-designed parkway planters set the tone for this uniquely designed home. Dont let that cute yellow exterior fool you. this is a logan square "stealth" home. designer owned; this home has been renovated from top to bottom w a unique vision & a discerning eye. Significant infra-structure projects as well as mcm & school-house finishes complement custom features to complete the project. Totally unique. Meticulously maintained. Just 2 blocks off Milwaukee, this home is located on two 1-way tree-lined streets. 2 bed, 2 bath home + additional bonus space on the upper level (a great family room/office space, yoga or music studio) offers 9' ceilings, hardwood & tile floors throughout, wood burning fireplace & custom built-ins. Totally renovated kitchen w all-stainless-steel appliance package (kitchenaid, miele, electrolux), hood fan w ext vent, quartz counter-top w/waterfall finish, island that seats 2, custom lighting, two-tone soft close custom cabinetry, subway tile back splash & great storage. Primary bedroom features heated porcelain floors with 3 separate heating zones, floating wood finish double bowl vanity & mirror by wetstyle, separate shower, high-end Victoria Albert soaking tub surrounded by floor to ceiling anne sacks & waterworks tile. Outside your back door is a carefully designed yard & garden ideal for entertaining: tranquil, multi-seating areas surrounded by mature trees, industrial water-fall & raised garden beds w healthy herbs, vegetables & a strawberry patch! Complete with irrigation system. 2 car garage. 25 x 125 ft lot. Amazing Logan Square location: Walking distance to a variety of the best & most interesting chicago restaurants & bars: lula cafe, chicago diner,The Whale, meadowlark, whistler, Sushi Taku, Ramen Wasabi, colectivo & bang bang. steps to cta blue line, logan farmer's market, 606 trail, Palmer Square. easy access to 90/94 expressway.

2+ OFFICE/STUDIO/TV/ REC ROOM

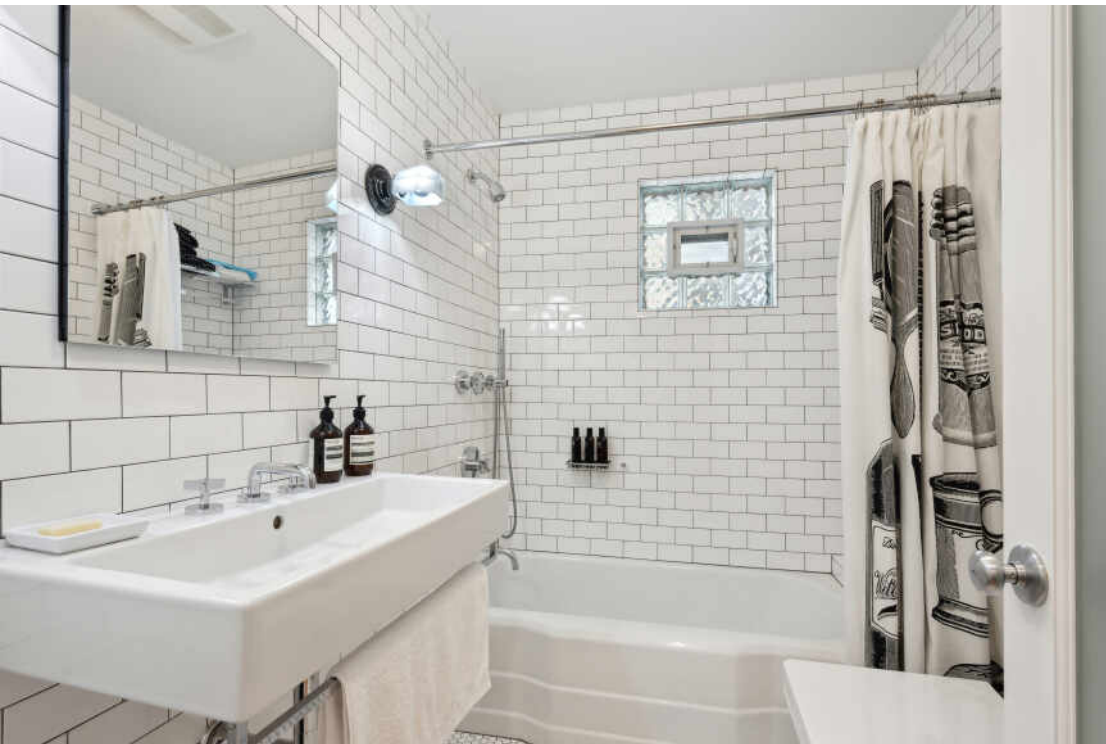
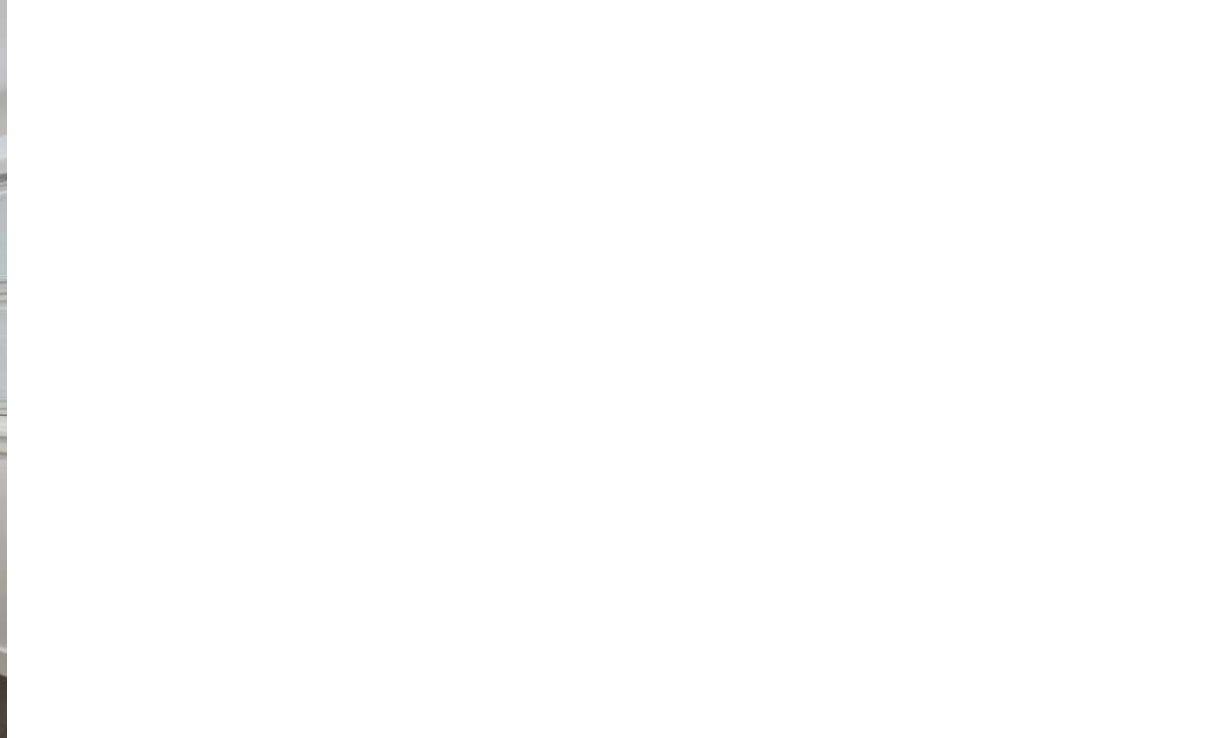
BEDROOM

2 BATH

TAXES: \$11,029











## LOGAN SQUARE PROVES THAT IT IS HIP TO BE SQUARE AFTER ALL.

The neighborhood attracts residents with its artistic vibe, park-like boulevards, and thriving dining scene.

The Logan Square Boulevards District, lined with beautiful homes and mature trees, is a designated Chicago landmark.

Although it's surrounded by some of Chicago's trendiest areas for nightlife, the neighborhood definitely holds its own. Logan Square is home to locally-owned restaurants, bars, and bistros, including hotspots noted by *Bon Appétit* as among Chicago's best. Artists and musicians live and work in the neighborhood, performing and displaying their art at local coffee shops, cafes, and theaters.

Known for its historic greystones, large bungalows, and stately mansions, Logan Square has seen a boom of residential development, including condominiums, lofts, townhomes, three-flats, and single-family homes. While there is ample new construction, the community still retains its historic charm by repurposing and preserving its landmarks.

The neighborhood's easy access to the CTA Blue Line is another draw for residents along with The 606 trail.





## KIM KERBIS, ABR, CRS, GRI, CNE, SRES, AHWD

(312) 339-1849

KIMKERBIS@ATPROPERTIES.COM

WWW.LAKEEFFECTCHICAGO.COM



## MICHAEL TATAR

BROKER

872.333.1838

MICHAELTATAR@ATPROPERTIES.COM



CHRISTIE'S  
INTERNATIONAL REAL ESTATE

2625WBELDEN.INFO