

26313 S WINFIELD ROAD  
MONEE



@properties®



ROOM DIMENSIONS

- LIVING ROOM : 15' × 12'
- FAMILY ROOM : 16' × 17'
- DINING ROOM : 13' × 11'
- KITCHEN : 12' × 12'
- MASTER BEDROOM : 33' × 11'
- SECOND BEDROOM : 11' × 13'
- THIRD BEDROOM : 16' × 10'

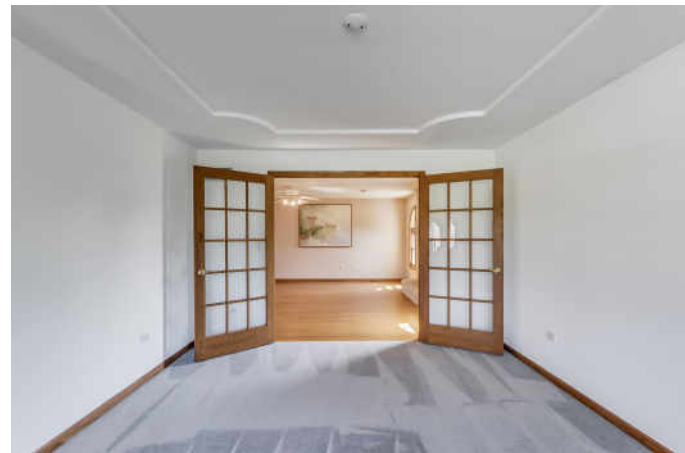
3 BEDROOM  
2.1 BATH  
TAXES: \$11,435

GORGEOUS COUNTRY-CHARMER

Peace, tranquility and wide-open space await the next owner of this Country-Charmer! This is an impeccably well-maintained and cared for, custom-built home with over 3,100 sf of living space. It is beautifully set on over two acres of mature-tree-lined land; both the home and lot are private and spacious. Beautiful views are had from the expansive deck, perfect for outdoor entertaining. Inside, the home is filled with quality, custom hardwood floors, finishes and cabinetry. Stainless steel appliances, granite counter tops, breakfast area with a view out of the sliding glass doors into the backyard, and a built-in desk space make the kitchen a show-stopper. The sitting room, with beautiful French doors, has great potential for office space, or a fourth main-floor bedroom. The living and dining rooms feature tray ceilings, and the cozy family room, open to the kitchen, has a gas fireplace. The primary bedroom, with en suite and large walk-in closet, is truly a retreat with volume ceilings and its own sitting area. Skylights can be found on both levels of the home, and along with the new (2018) Pella Advanced Low-E windows, let natural light come spilling in. The full unfinished basement is loaded with potential, with rough-ins for a full bath and a work room. An absolutely beautiful home!

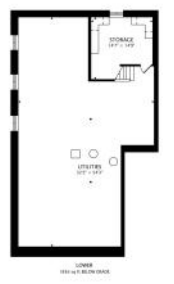
- Pella Advanced Low-E windows new in 2018
- Furnace new in 2018
- Roof new in 2014
- Security System
- Intercom System
- Central Vac
- Sump Pump Monitor













26313 S WINFIELD ROAD 11



## KELLI KAUZLARICH

708-308-6488

708-971-0060

KKAUZLARICH@ATPROPERTIES.COM



26313SWINFIELDRD.INFO