

2640 SUMMIT DRIVE #309
GLENVIEW





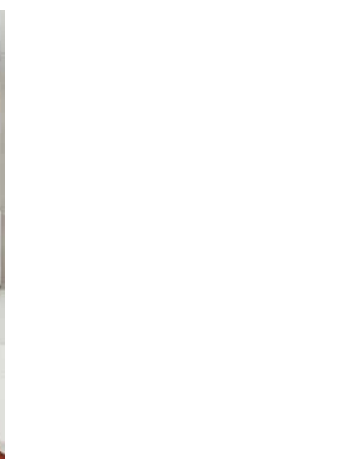
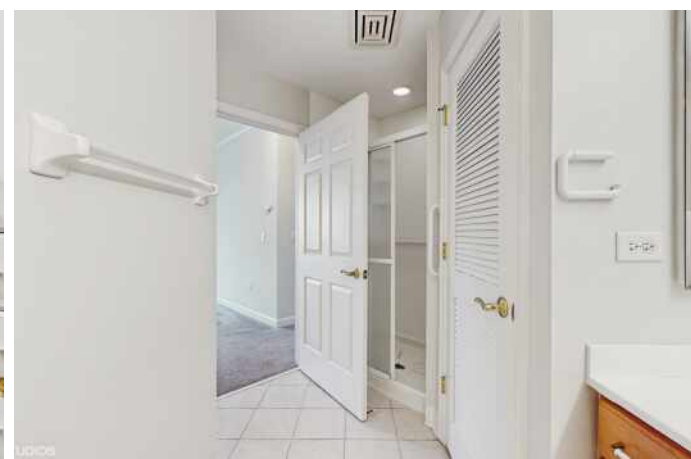
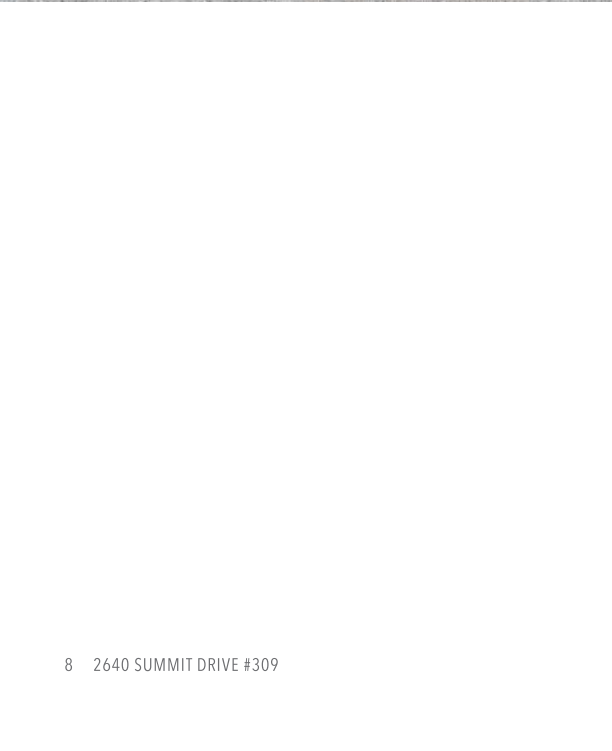
3 BEDROOM
2.1 BATH

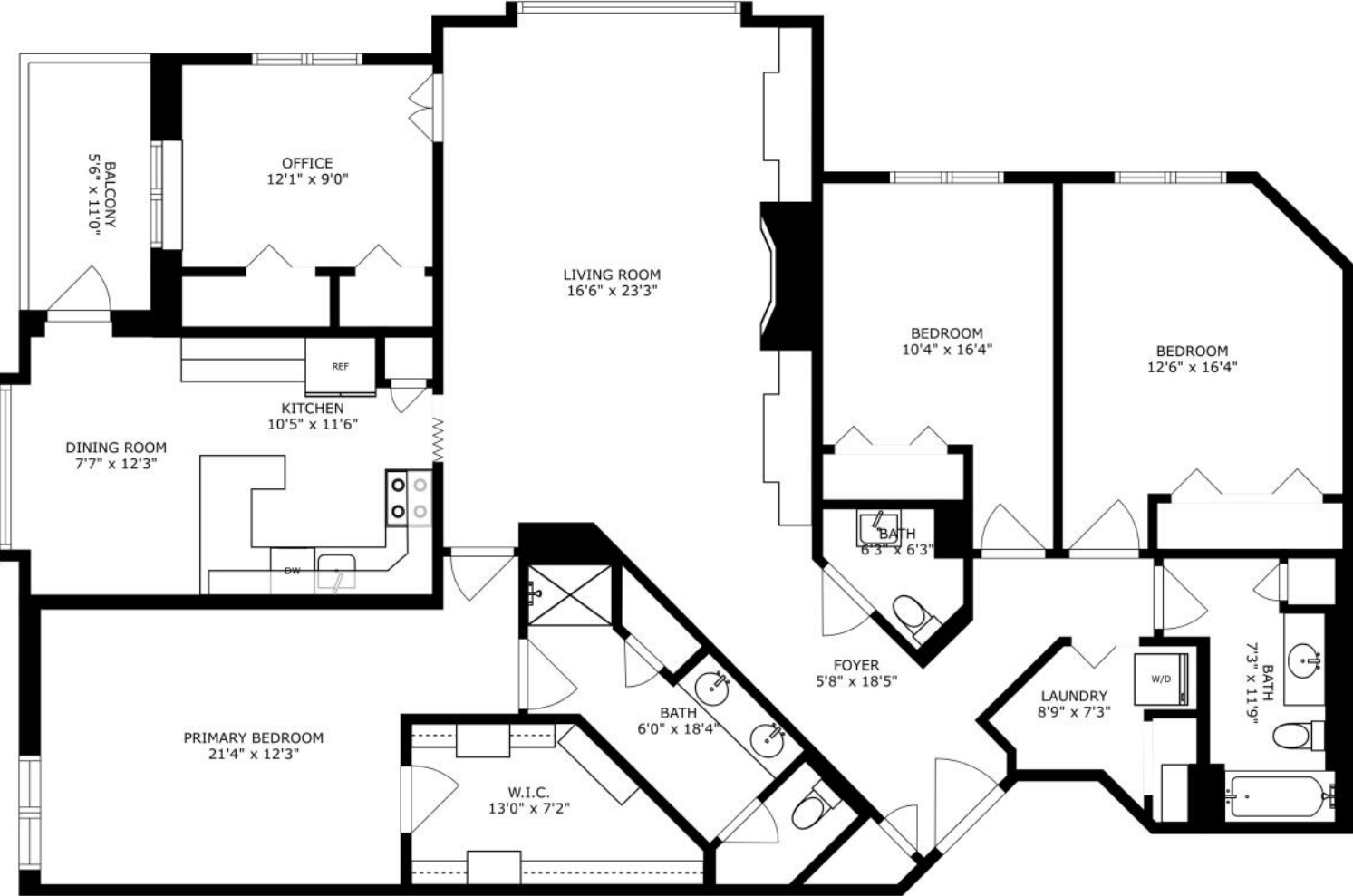
PENTHOUSE WITH STUNNING SUNSET VIEWS

Offering nearly 2,000 square feet of elegant living space, this top-floor unit includes two side-by-side heated garage spaces and a spacious walk-in storage unit. The bright eat-in kitchen features expansive west-facing views, a built-in desk, and direct access to a private terrace-perfect for enjoying your morning coffee or evening wine. The inviting great room boasts a coffered ceiling, fireplace, custom built-ins, and a large picture window overlooking tree-lined scenery. A separate office with custom built-ins provides the ideal work-from-home setup. The primary suite is complete with an oversized walk-in closet, dual vanities, a walk-in shower and linen closet. Two additional bedrooms are located on the opposite side of the unit and share a full bath-perfect for privacy and functionality. Additional highlights include a gracious foyer with coat closet, hardwood floors throughout the main living areas, a powder room with pedestal sink, and a laundry room with full sized washer and dryer. Entire unit has been recently painted. This impeccably maintained building offers a prime location close to The Glen, shopping, dining, transportation, and entertainment.



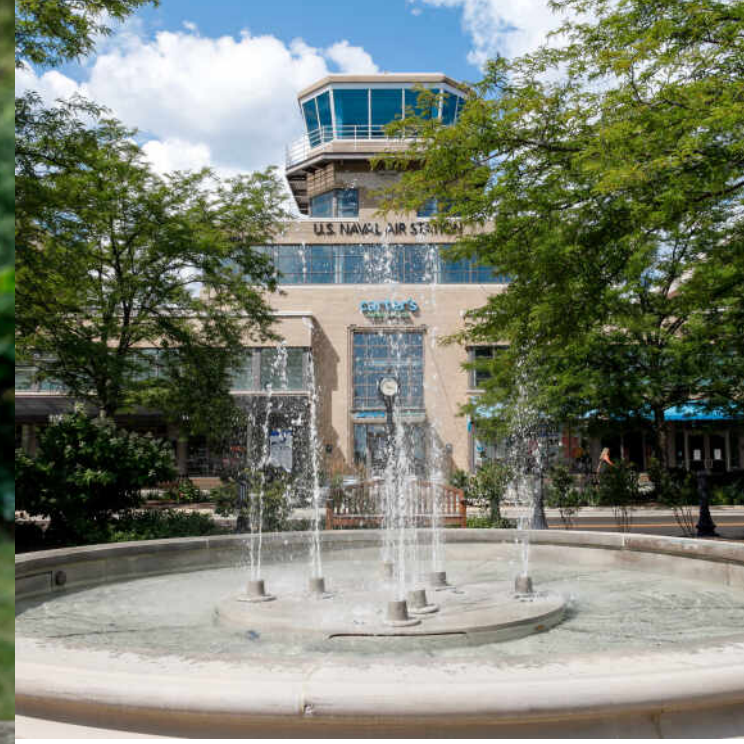






SIZES AND DIMENSIONS ARE APPROXIMATE, ACTUAL MAY VARY.





JUST 20 MILES FROM DOWNTOWN CHICAGO, **GLENVIEW** IS A DESTINATION IN ITS OWN RIGHT.

The scenic North Shore town has expanded rapidly thanks to its established neighborhoods, convenient access to transportation, and array of amenities.

More than 45,000 people call Glenview home, with properties ranging from townhomes and condominiums to luxury custom homes featuring the latest amenities. Newer homes can also be found at The Glen, a large development on the site of the former Glenview Naval Air Station that offers an assortment of shops and restaurants, a movie complex, the Kohl Children's Museum, and access to one of the town's two Metra stations.

Glenview is served by a number of public and private schools, including Glenbrook South High School, ranked among the top in the nation according to Business Insider.

The Glenview Park District offers indoor and outdoor pools, golf courses, soccer fields, nature trails, an ice center, tennis club, and multi-purpose community center.

In addition to modern development, Glenview celebrates and preserves its early days with two notable attractions: Wagner Farm and The Grove. A 20-acre working farm, Wagner Farm has hands-on programs - horseback riding, tractor driving, and other activities - that reflect a day in the life of a 1920s farmer. The Grove, a National Historic Landmark, includes a prairie, nature trails, historic buildings, and a log cabin that dates back to the 1850s.



NOTES



PAULA MCGRATH

847 707-9208

847-998-0200

PAULAMCGRATH@ATPROPERTIES.COM

PAULAMCGRATHHOMES.COM



All specifications, features, designs, price, assessments, taxes and materials are subject to change without notice. Depicted floor plans and architectural renderings are only an artist's impression.

