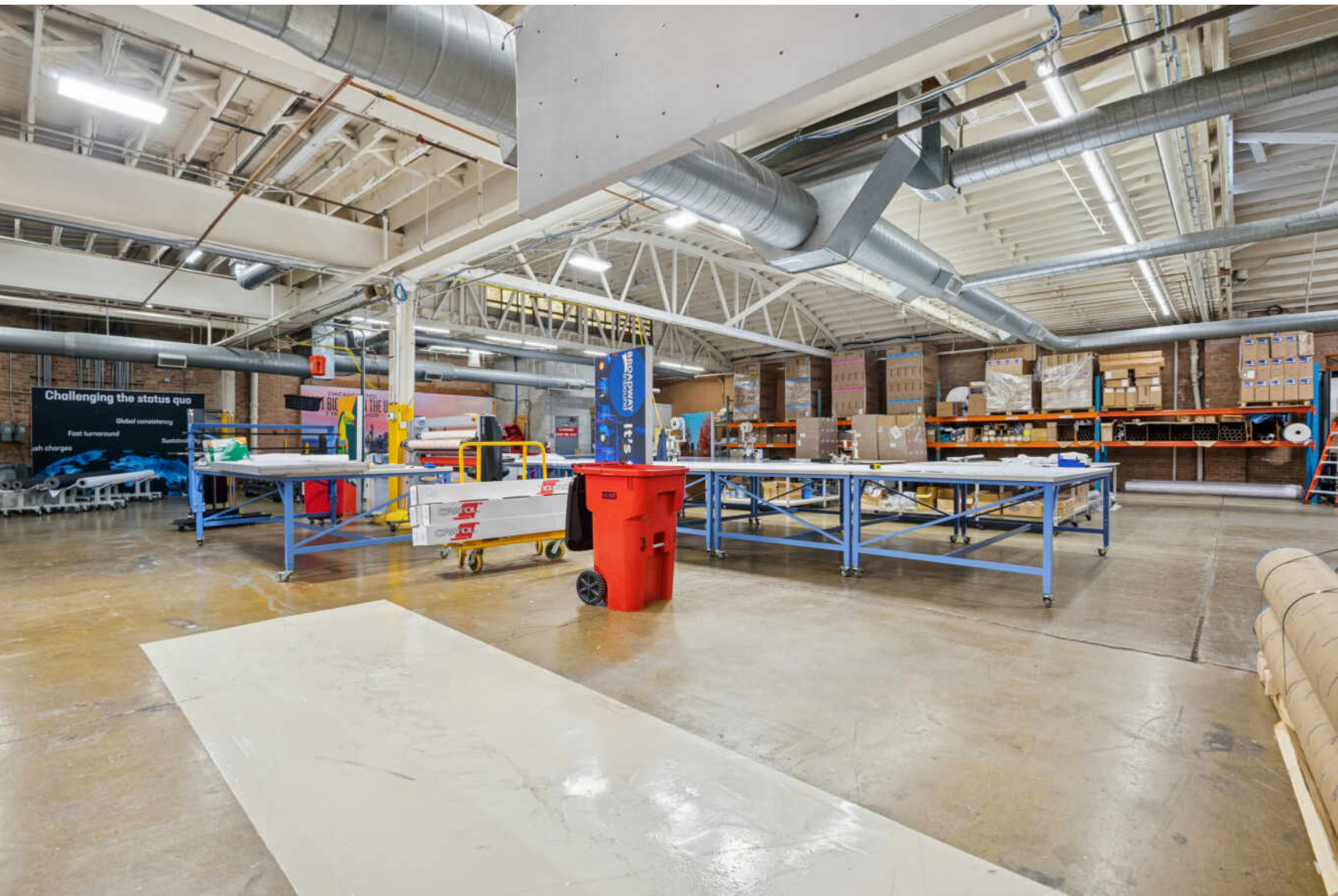


# 2643 W CHICAGO AVENUE

WEST TOWN





## 2643 W CHICAGO - WAREHOUSE, RETAIL OR OFFICE SPACE FOR LEASE

14,700 RSF

2 Drive in Doors

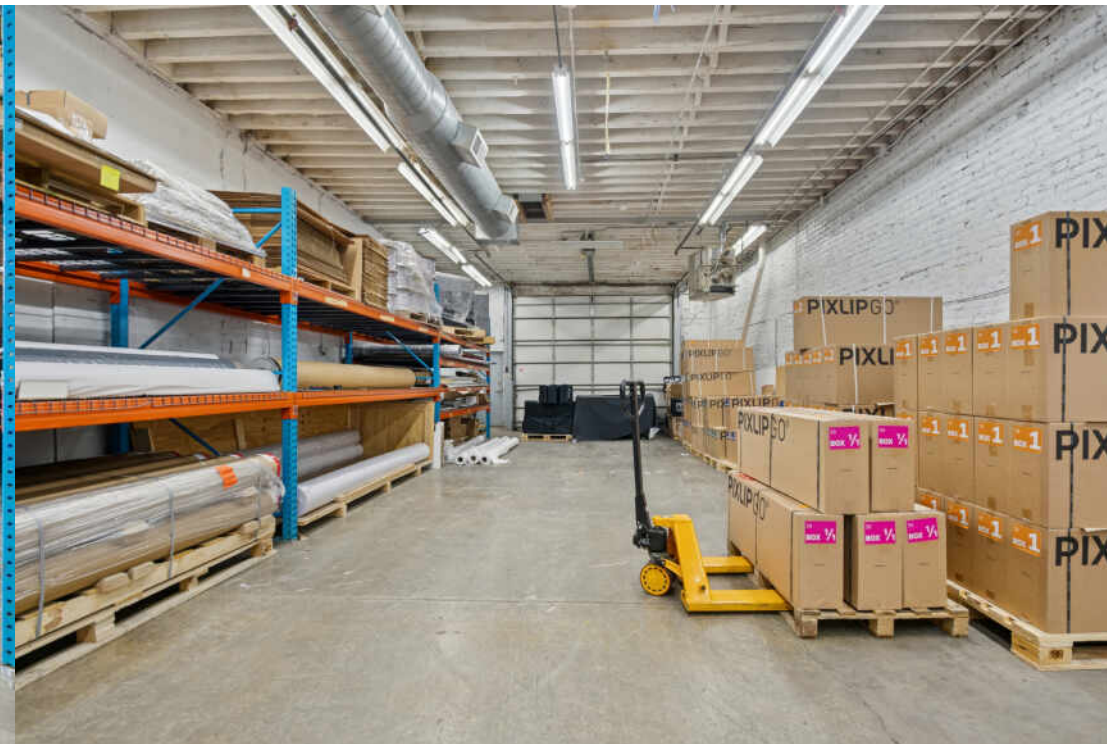
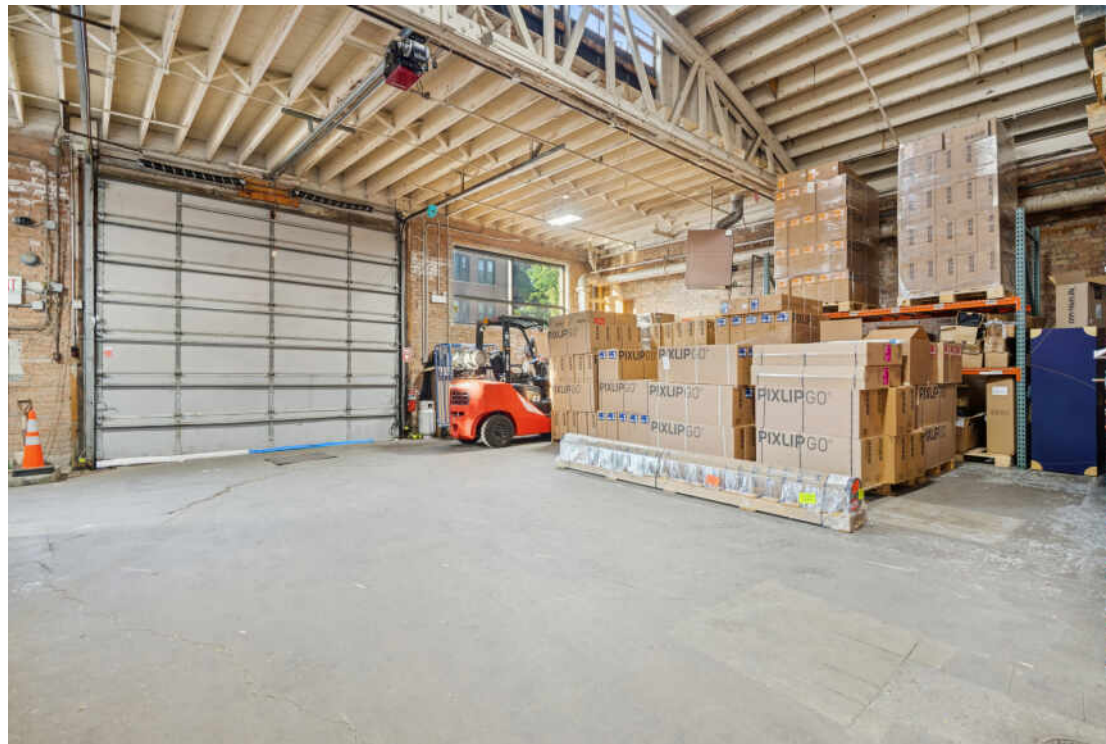
Bow Truss Building

3 parking spaces

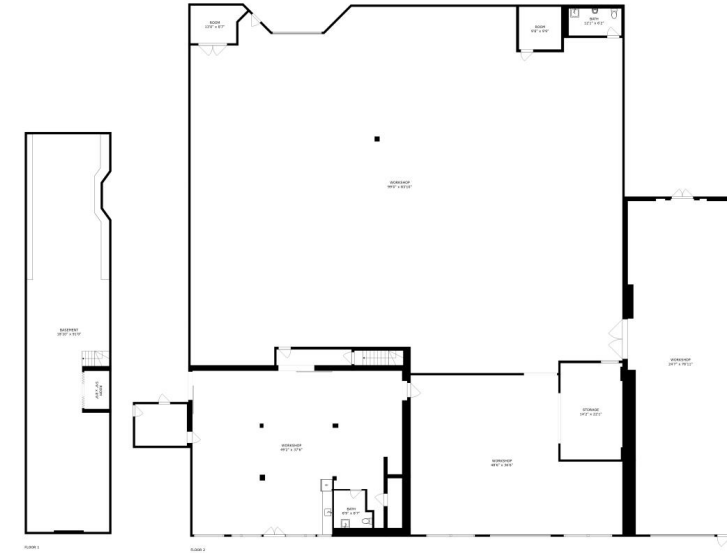
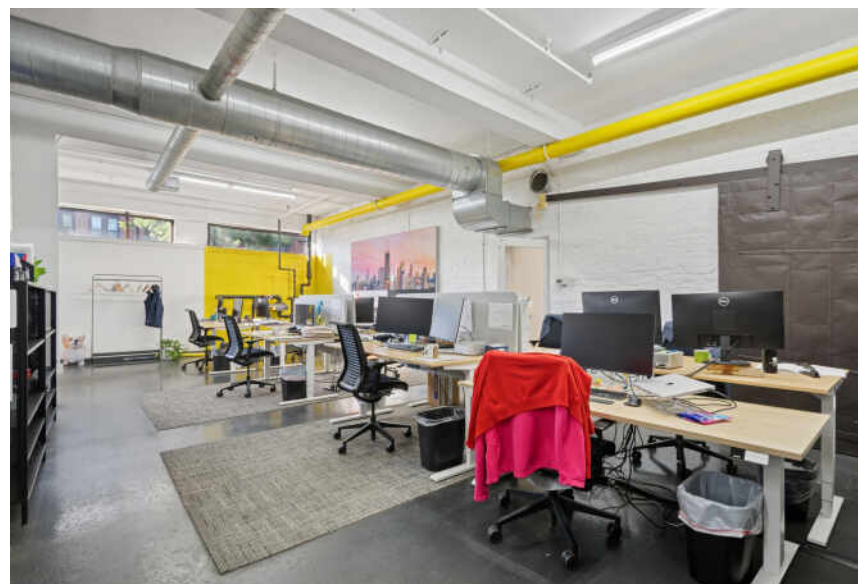
Includes around 2,000 SF of office space

Space is in excellent condition.

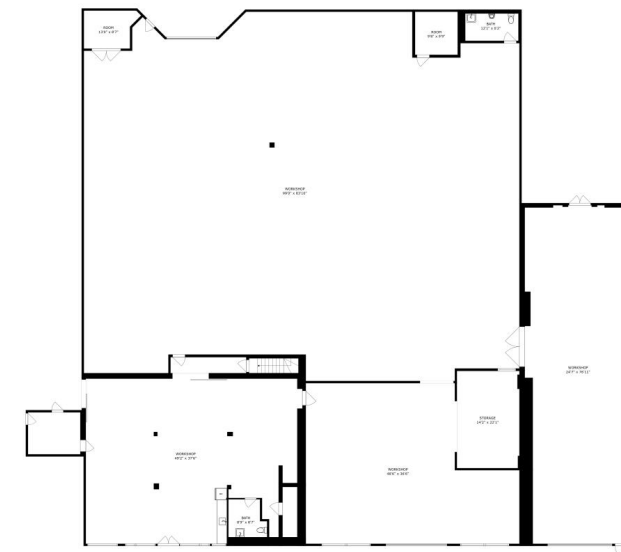








SIZES AND DIMENSIONS ARE APPROXIMATE, ACTUAL MAY VARY.



SIZES AND DIMENSIONS ARE APPROXIMATE, ACTUAL MAY VARY.





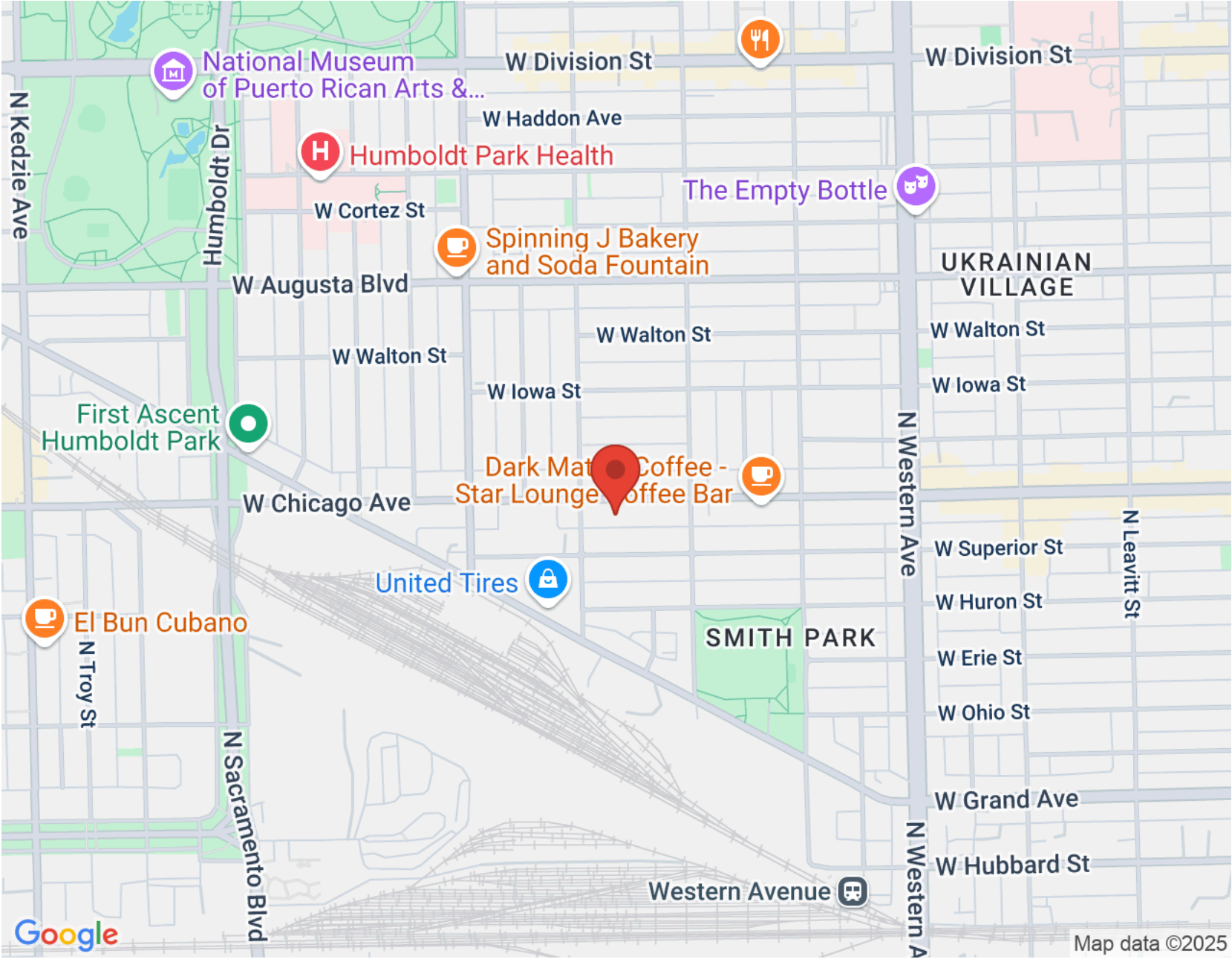
COMPRISED OF SEVERAL DISTINCT NEIGHBORHOODS, **WEST TOWN** IS A THRIVING COMMUNITY THAT HAS EXPERIENCED EXTENSIVE DEVELOPMENT OVER THE PAST DECADE.

The community includes the neighborhoods of Wicker Park, Ukrainian Village, East Village, River West, Noble Square, East Humboldt Park, and parts of Bucktown. With an eclectic mix of hip cafes, independent bookstores, art galleries, music venues, and peaceful city parks, West Town appeals to a variety of lifestyles.

Over the last several years, the community has seen an influx of trendy eateries, bars, and boutiques pop up along Division Street, Chicago Avenue, Grand Avenue, and Damen Avenue, making it a popular destination for shoppers looking for the hottest fashions and for foodies in search of unique cuisine. Every year, locals enjoy a number of festivals, including Do Division Street Fest, West Fest, Renegade Craft Fair, and the West Town Art Walk.

West Town features an assortment of housing styles and price ranges. Condominiums take the form of vintage walk-ups, rustic lofts, and new-construction three-flats and mid-rises. Single-family homes range from smaller cottages and bungalows to gut-rehabbed greystones, historic mansions, and eye-popping multimillion-dollar new construction.





NOTES \_\_\_\_\_

\_\_\_\_\_

\_\_\_\_\_

\_\_\_\_\_

\_\_\_\_\_

\_\_\_\_\_

\_\_\_\_\_

\_\_\_\_\_

\_\_\_\_\_

\_\_\_\_\_

\_\_\_\_\_



## GRAHAM MITCHELL

3129258042

312-337-0200

GMITCHELL@ATPROPERTIES.COM



## TIM RYAN

3122171591

312-337-0200

TIMR@ATPROPERTIES.COM