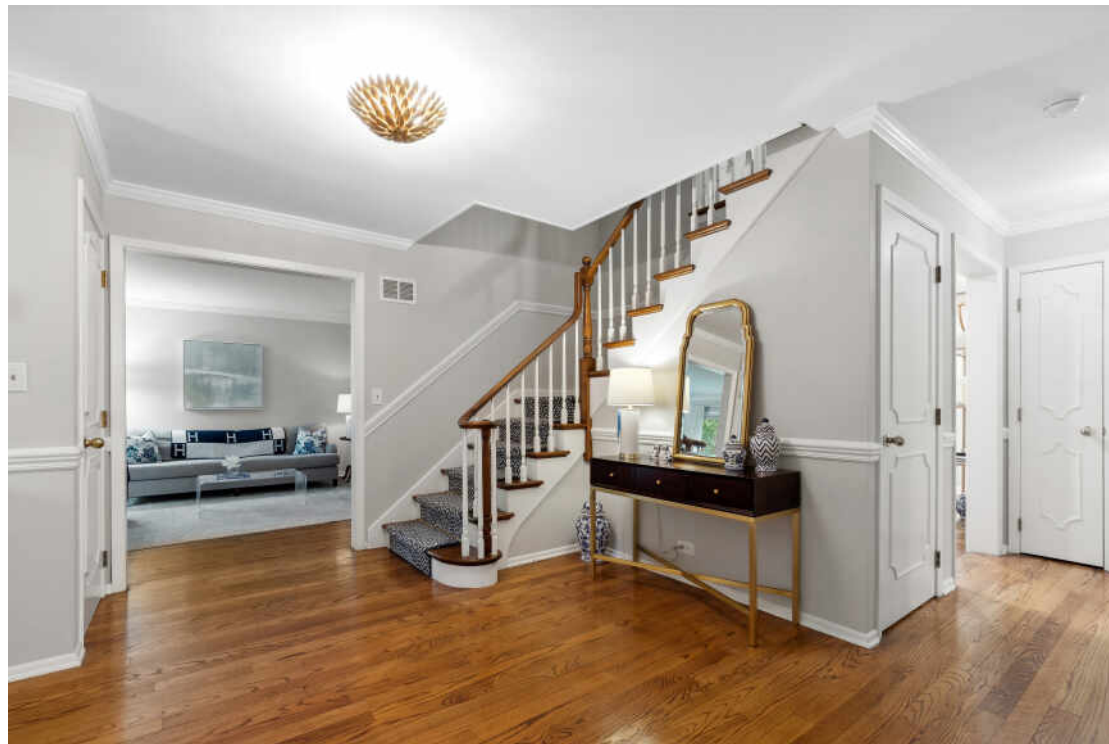


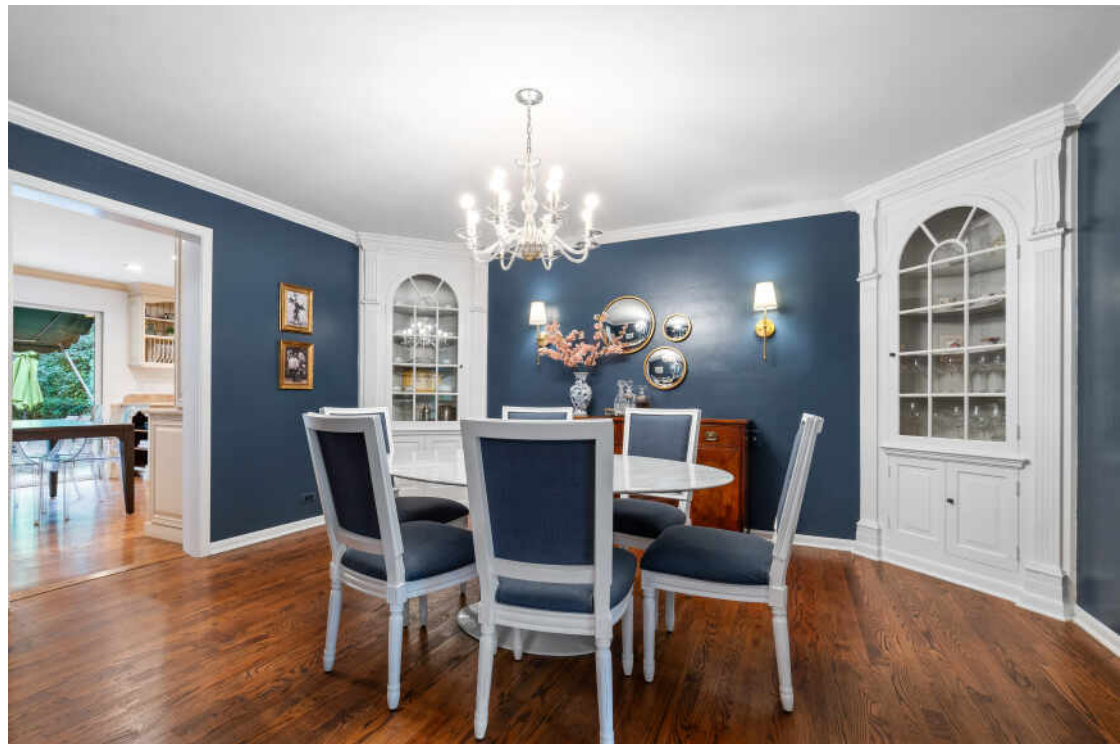
2665 GREENWOOD AVENUE
HIGHLAND PARK





Fabulous, beautifully updated 4 bed, 2.1 bath Tudor home in the Woodlands of Highland Park. Large, inviting foyer opens to dining room with charming corner built-in cabinets perfect for both storage & display on one side and lovely, oversized living room on the other side. Living room leads to the spacious, yet cozy family room with gas fireplace. Sun/Florida room addition off family room has large glass sliding doors with screens, allowing for an incredible indoor/outdoor flow to huge, private, fully-fenced yard with brick paver patio. Spacious eat-in kitchen with custom cabinetry, high-end appliances, double ovens, professional gas range top, warming drawer, farmhouse sink, island and abundant storage. Laundry/mudroom off the kitchen has even more storage and leads to oversized 2 car garage with epoxy coating. The 2nd floor includes a giant primary suite with separate sitting area or home office space, walk-in closet and beautifully updated primary bath with separate tub and shower, double sinks and plenty of vanity space. Three additional perfectly sized bedrooms share spacious hall bath with double sinks and tub/shower combo. Full finished basement has perfectly sized rec room with new soft, extra padded carpet and storage for days! Hardwood floors throughout first and second floors, brand new roof, gutters & skylights, new garage door, new LED lighting in many rooms, brand new hot water heater, in-ground sprinkler system and so much more...walk to both elementary and middle schools, easy access to the highway, Metra, Highwood and Downtown Highland Park. This home checks all of the boxes and then some!

4 BEDROOM
2.1 BATH
TAXES: \$16,455











JAMIE STRONBERG

847.707.8063

847-432-0700

JSTRONBERG@ATPROPERTIES.COM



All specifications, features, designs, price, assessments, taxes and materials are subject to change without notice. Depicted floor plans and architectural renderings are only an artist's impression.

