

2676 LAKE BLUFF TERRACE
ST. JOSEPH

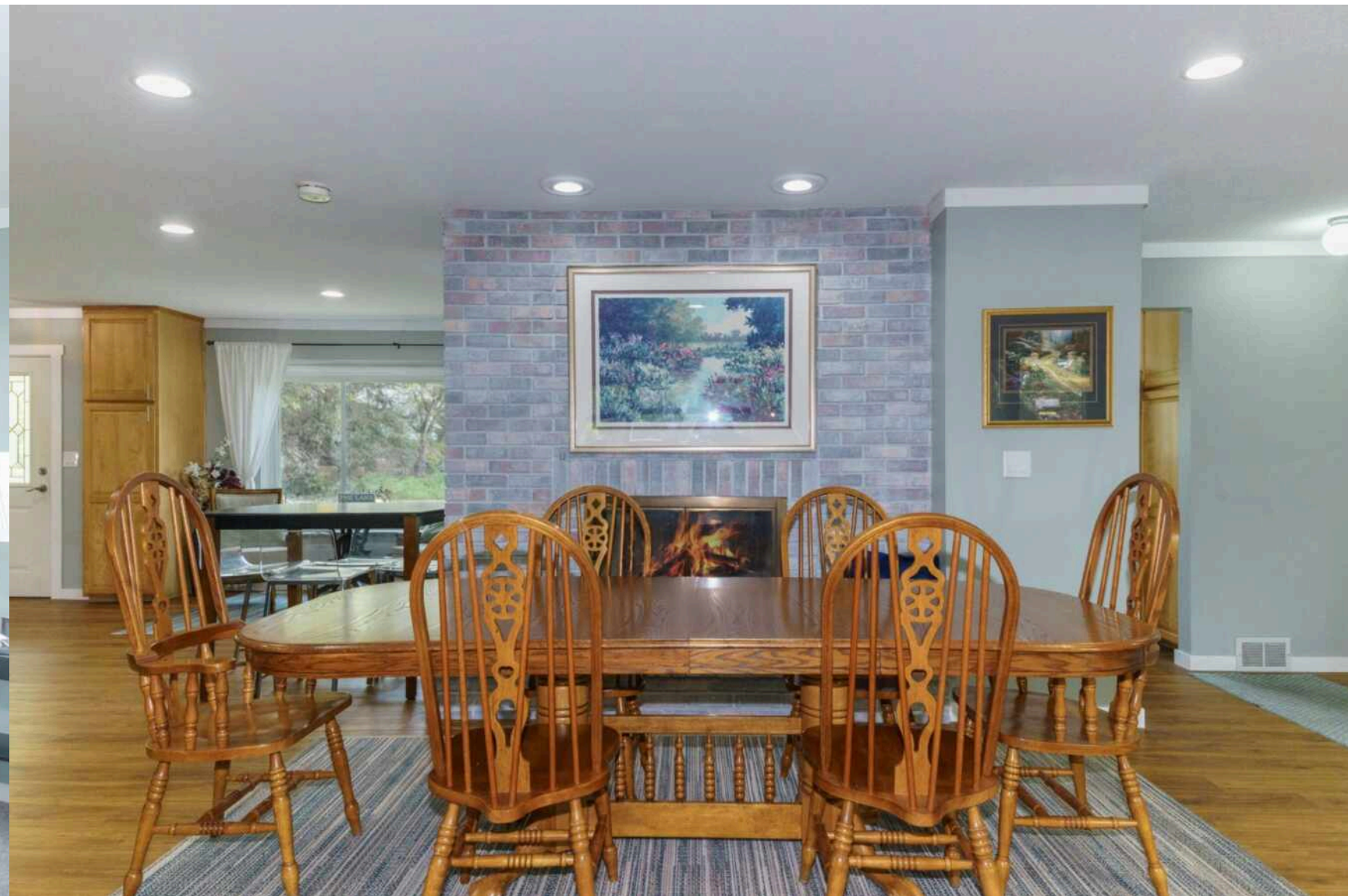




3 BEDROOM
2.2 BATH
TAXES: \$4,285

Beautifully maintained 3-bedroom, 2 full and 2 half bath brick ranch located in highly desirable Shoreham Village with deeded Lake Michigan access just a short walk away. Situated on a spacious, professionally landscaped lot, this home offers exceptional curb appeal with mature trees, vibrant perennial gardens, underground sprinkling, and multiple outdoor spaces to relax and entertain. Inside, you'll find an inviting open-concept layout filled with natural light. The stunning vaulted sunroom/family room features skylights, exposed beam accents, walls of windows, and French doors leading to the patio and garden retreat. Spacious living and dining areas flow seamlessly together, creating an ideal setting for gatherings and everyday living. The partially finished basement includes custom built-ins and a unique bar area, offering additional recreation and entertaining space. Kitchen features tile flooring, tile backsplash, pull-out shelving. More below..... Continued..... and new, beautiful cabinetry! Enjoy peaceful lakeshore living with private deeded access to Lake Michigan, where breathtaking sunsets and shoreline views await. This exceptional property combines comfort, charm, and location--perfect as a year-round residence or lakeshore getaway. This remarkable home has been completely updated for you! Schedule your private tour today!







KNOWN AS "THE RIVIERA OF THE MIDWEST," **ST. JOSEPH** IS A RESORT COMMUNITY SURROUNDED BY PICTURESQUE BEACHES, WITH LAKE MICHIGAN AS ITS SPARKLING BACKDROP.

The city was founded as a shipping community and has since evolved into an affluent resort community.

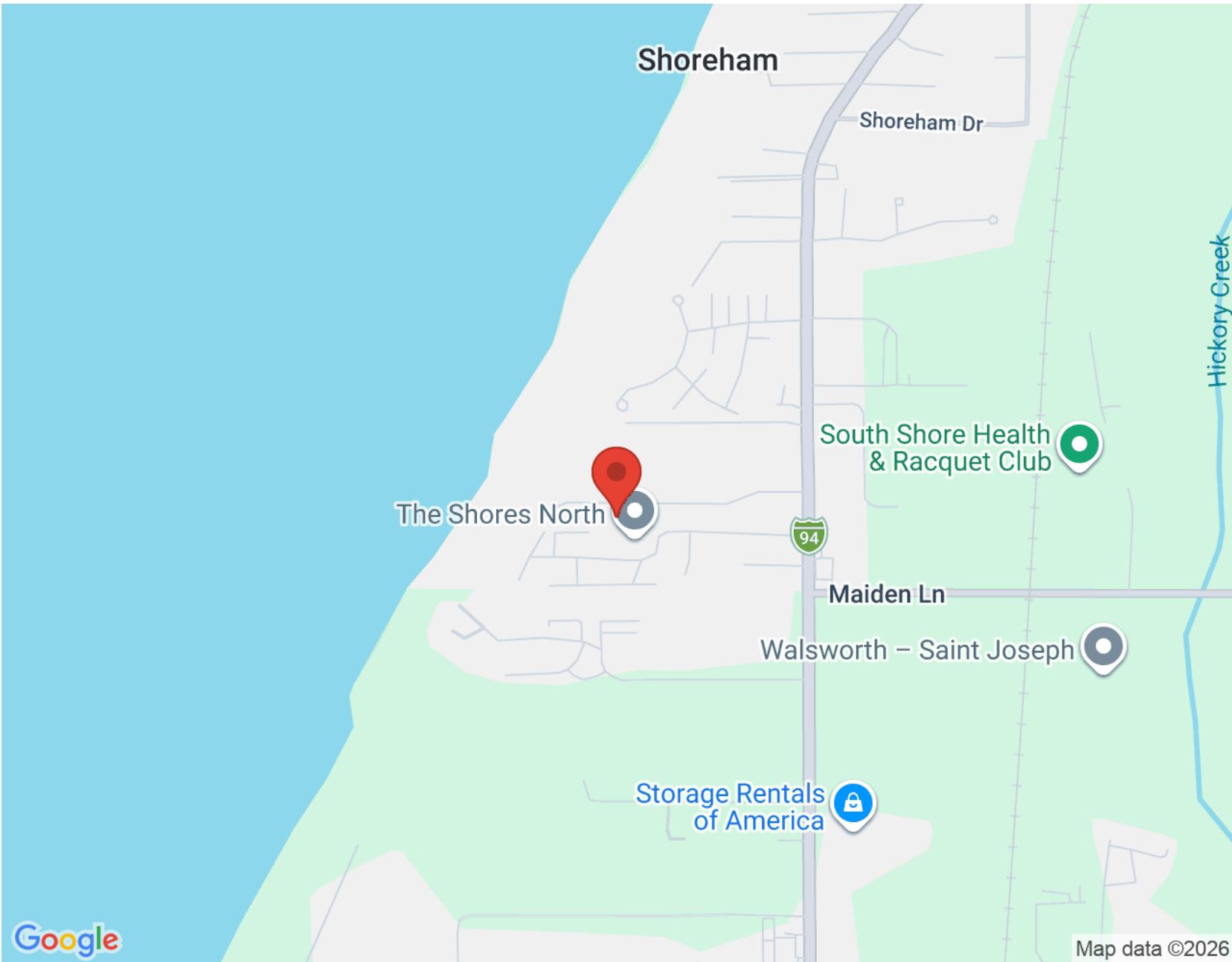
St. Joseph's lakeshore is lined with idyllic beaches and picturesque sand dune formations. Inland is a lush countryside that produces some of the country's best orchards and vineyards. Downtown St. Joseph is comprised of local shops and eclectic dining options.

Outdoor enthusiasts have limitless options. The Margaret B. Upton Arboretum showcases many sculptures and park benches and is adjacent to downtown. Locals and visitors can also enjoy the many parks, such as Lake Bluff Park, Tiscornia Park, and Silver Beach County Park, and recreational facilities that offer fishing, boating, and swimming.

St. Joseph hosts various festivals that attracts thousands of visitors, including the annual Chalk the Block Arts Festival and live music at the Shadowland Pavilion at Silver Beach.

Housing in St. Joseph includes homes overlooking the bluff and plenty of opportunities to own property with Lake Michigan frontage, ranging from beach cottages to custom-built mansions.

St. Joseph has easy access to I-94, offering convenient travel to both Chicago and Detroit.



NOTES _____



JOSEPH FLOOD

(616) 446-8700

JOEFLOOD@ATPROPERTIES.COM

JOEFLOODREALESTATE.COM