



26874 N COUNTRYSIDE LAKE DRIVE
MUNDELEIN



@properties | CHRISTIE'S
INTERNATIONAL REAL ESTATE

LP LUXURY
PORTFOLIO
INTERNATIONAL



MARY GIBBS-MOODHE REAL ESTATE BROKER

847.902.3357 mobile
mgibbs@atproperties.com



TERRY WILKOWSKI REAL ESTATE BROKER

847.682.1549 mobile
twilkowski@atproperties.com

Wilkowski Gibbs
GROUP

26874 N COUNTRYSIDE LAKE DRIVE • MUNDELEIN





BACK YARD

INCOMPARABLE LAKEFRONT PARADISE ON COVETED COUNTRYSIDE LAKE!

ROOM DIMENSIONS

Living Room	18'x13'
Family Room	16'x13'
Kitchen	29'x16'
Dining Room	13'x13'
Sunroom	19'x11'
Office	14'x11'
Primary Bedroom	31'x16'
Second Bedroom	16'x13'
Third Bedroom	13'x12'
Fourth Bedroom	16'x13'
Fifth Bedroom	13'x12'

FEATURES

Set on 2 professionally landscaped acres with 147 feet of private shoreline, this stunning 5-bedroom, 5-bath brick home offers luxurious year-round resort living. Sweeping lake views, mature trees, and high-end finishes throughout make this a true retreat. Enjoy swimming, boating, fishing, and ice skating on the 160-acre Countryside Lake—right from your backyard.

Watch sunsets from your private dock, gather around the lakeside firepit, relax under the pergola, or entertain on the expansive brick patio. Inside, timeless elegance meets everyday comfort with multiple living/dining spaces and a sunroom that floods the home with natural light. At the heart is a chef's kitchen featuring a massive island, top-tier Thermador appliances, wine/beverage center, walk-in pantry, and gorgeous lake views. The second floor offers two Jack & Jill suites and a luxurious primary suite with steam shower, soaking tub, and a cozy sitting area in the walk-in closet—complete with a secondary washer/dryer. The finished lower level includes a library, wine room, gym, full bath, and garage access. The 3-car epoxy-floored garage has an extra-deep bay perfect for a boat or RV. Located in a private community with a beach, tennis and pickleball courts, playground, and neighborhood security, this home delivers four-season lakefront living at its best. A rare opportunity to own an unmatched property—impossible to replicate at this price.



MARY GIBBS-MOODHE REAL ESTATE BROKER

847.902.3357 mobile
mgibbs@atproperties.com



TERRY WILKOWSKI REAL ESTATE BROKER

847.682.1549 mobile
twilkowski@atproperties.com



FOYER



OFFICE



KITCHEN



KITCHEN / BREAKFAST ROOM



FAMILY ROOM



SUN ROOM



DINING ROOM



LIVING ROOM



PRIMARY BEDROOM



PRIMARY BEDROOM SITTING AREA



PRIMARY BATHROOM



PRIMARY BEDROOM CLOSET



2ND BEDROOM



2ND BEDROOM



2ND BATHROOM



4TH BEDROOM



3RD BEDROOM





3RD BATHROOM



5TH BEDROOM



GAME ROOM



FITNESS ROOM



WINE CELLAR



PATIO



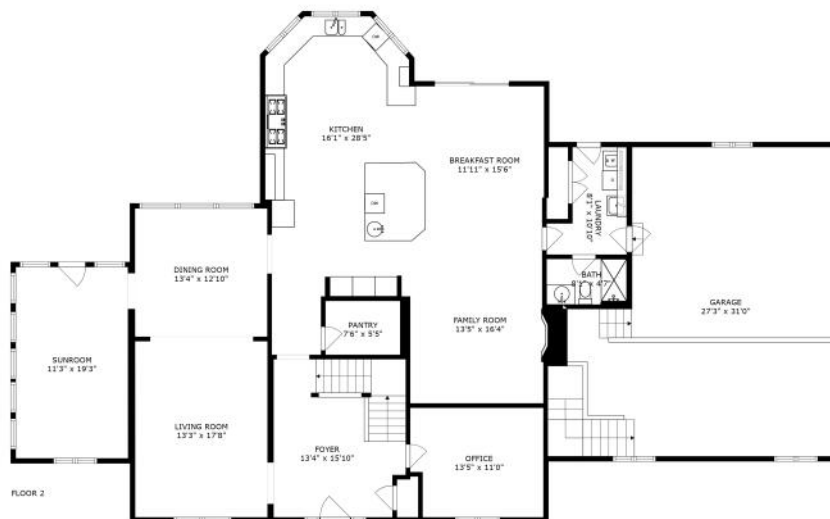
UPPER PATIO SEATING AREA







FLOOR 1



FLOOR 2



FLOOR 3

SIZES AND DIMENSIONS ARE APPROXIMATE, ACTUAL MAY VARY.



AERIAL VIEW



AERIAL VIEW

