

26982 W LAKEVIEW DRIVE S
LAKE BARRINGTON



@properties®

CHRISTIE'S
INTERNATIONAL REAL ESTATE



ROOM DIMENSIONS

LIVING ROOM : 22' × 15'

FAMILY ROOM : 29' × 15'

DINING ROOM : 14' × 12'

KITCHEN : 14' × 10'

PRIMARY BEDROOM : 20' × 12'

SECOND BEDROOM : 18' × 16'

THIRD BEDROOM : 14' × 13'

FOURTH BEDROOM : 13' × 11'

FIFTH BEDROOM : 11' × 11'

BEDROOM SUITE : 13' × 12'

RECREATION ROOM : 35' × 29'

SCREEN PORCH : 24' × 10'

5 BEDROOM

4.1 BATH

LARGE LAKE HOME IN LAKELAND ESTATES

Set on a small lake in Lakeland Estates, this spacious home offers over 4,800 finished square feet with a walkout basement. The layout features generously sized rooms, a flexible floor plan, and plenty of windows that bring in natural light and frame peaceful lake views. With approximately 200 feet of frontage, 1.25 acre property includes lake rights and its own private stretch of shoreline-perfect for enjoying the simple pleasures of lake life. The main level features a family room with built in book shelves and fireplace and bay windows. Upstairs, there are two options for a primary bedroom--one has a large office/sitting room attached with smaller full bathroom; the other features a larger bathroom and walk-in closet. Three more bedrooms and full bathroom complete the 2nd floor. The lower level has a large open recreation room. There's a 4th full bathroom plus a fantastic working sauna, perfect after a day of ice skating. Lakeland Estates is a quiet community of just 95 homes surrounding a 15+ acre lake, where residents enjoy swimming at the neighborhood beach, fishing, kayaking, volleyball, firepits and a relaxed, close-to-home lifestyle. Whether it's morning coffee on the deck, evenings in the screen room, or heading out for a paddle, this is a setting that's all about being outside and unwinding.



PALCO DOBRIN



PALCO DOBRIN



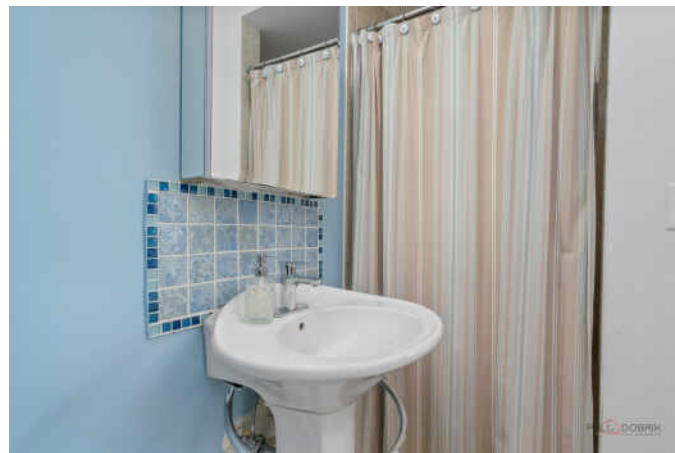
PALCO DOBRIK

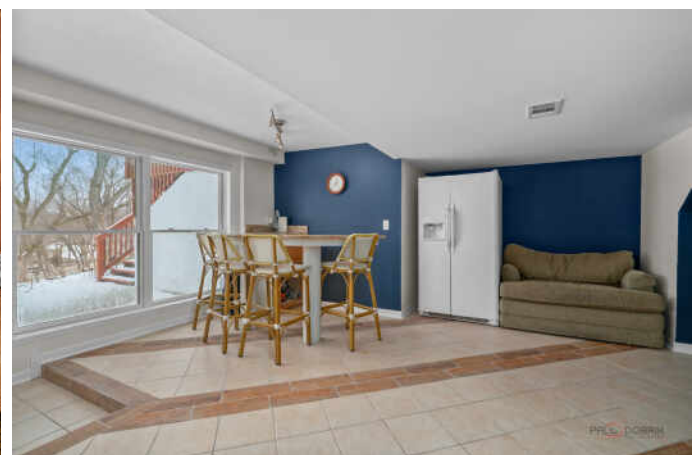
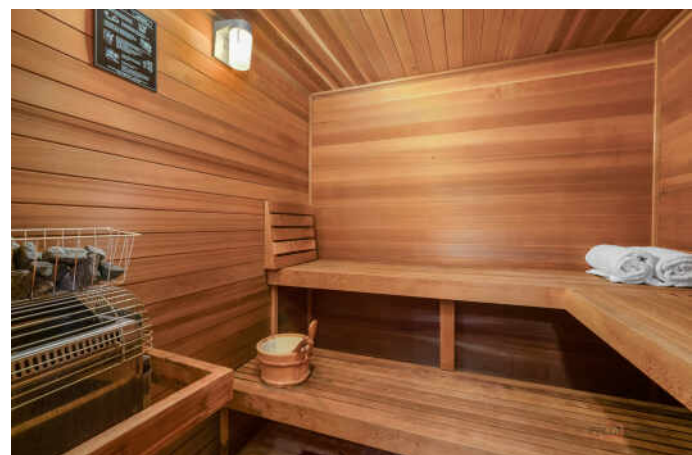


PALCO DOBRIK

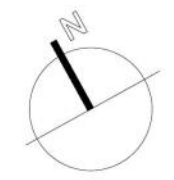


PALCO DOBRIK





26982 W Lakeview Drive S, Lake Barrington, IL, 60084, US



GROSS INTERNAL AREA
 TOTAL: 4,809 sq ft
 BASEMENT: 1,511 sq ft, FIRST FLOOR: 1,807 sq ft, SECOND FLOOR: 1,691 sq ft
 EXCLUDED AREAS: GARAGE: 562 sq ft, SCREENED PORCH: 223 sq ft
 SIZE AND DIMENSIONS ARE APPROXIMATE, ACTUAL MAY VARY



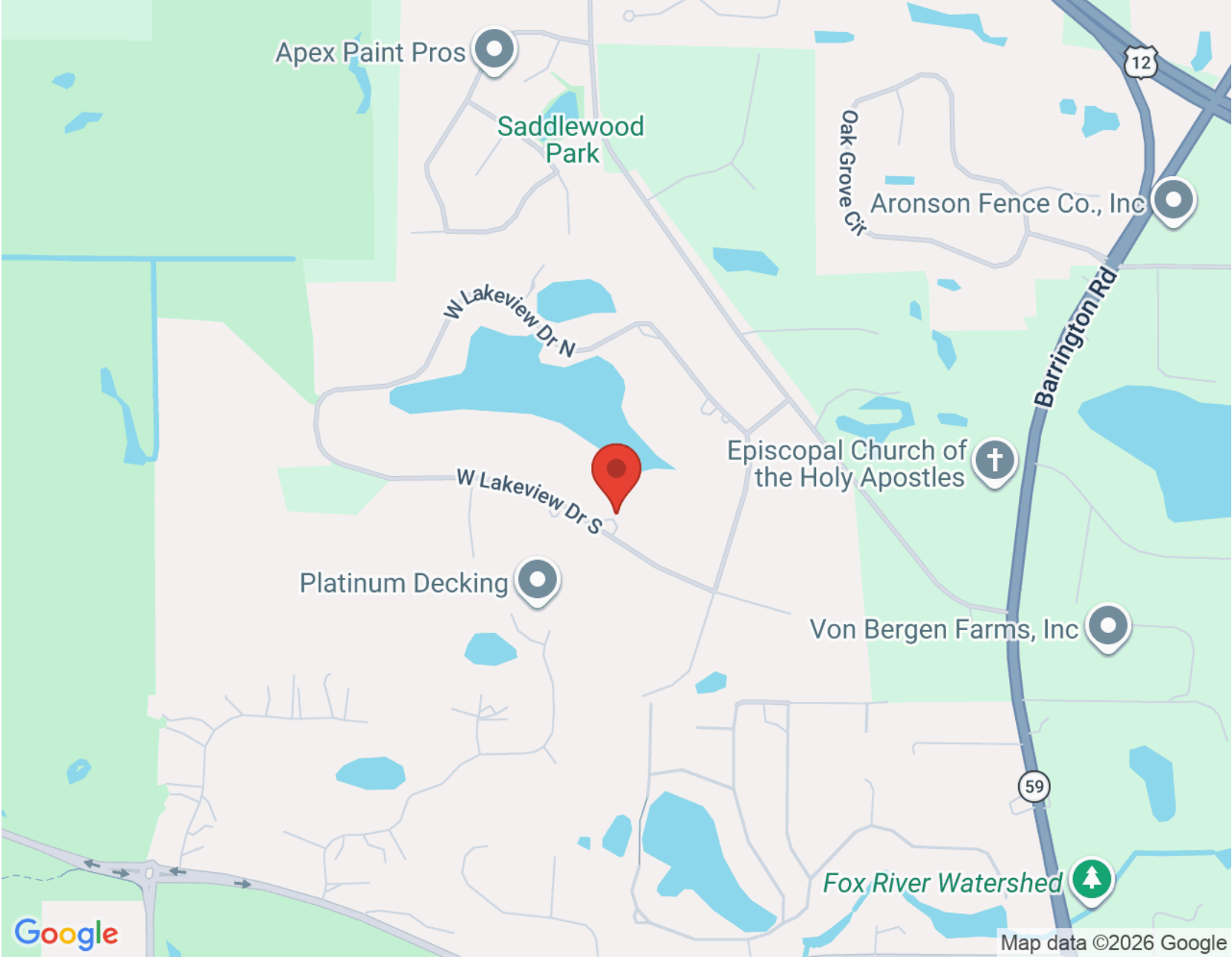


THE VILLAGE OF **LAKE BARRINGTON** IS APTLY DESCRIBED AS AN "OASIS OF GRACIOUS COUNTRYSIDE LIVING AND OPEN SPACES."

Residents have access to over 860 acres of forest preserves and open green space, including trails, golf courses and recreational fields. The village also has playgrounds, a splash park, and a public marina.

In addition to being a natural oasis of woodlands and wetlands, Lake Barrington has an abundance of amenities, from restaurants to local ice arenas to quaint coffee shops. The community is also home to the Lake Barrington Shores Golf Club and Stonehenge Golf Club.

Lake Barrington has access to two Metra rail stations, providing easy access to and from downtown Chicago.





TAMI HAMILTON

CELL: 224.730.9661

TAMIHAMILTON@ATPROPERTIES.COM

WWW.TAMIHAMILTON.COM

