

2720 N LEHMANN COURT #4
LINCOLN PARK





2 BEDROOM
2 BATH
TAXES: \$11,872
ASSESSMENTS: \$325 / MONTH

EAST LINCOLN PARK PENTHOUSE WITH PRIVATE, PROFESSIONALLY DESIGNED ROOF DECK

Sun-drenched and sophisticated, this East Lincoln Park 2-bedroom, 2-bath penthouse offers refined city living anchored by a private, professionally landscaped rooftop designed by a nationally published landscape designer and featured on the cover of *Tiny and Wild* and in *Fine Gardening*, among others.

The open-concept floor plan showcases a chef's kitchen appointed with Sub-Zero, Wolf, and Bosch appliances, an expansive island, and a dedicated dining area that flows seamlessly into a gracious living space centered around a gas fireplace. Oak hardwood floors, soaring ceilings, custom millwork, abundant natural light, and generous storage elevate the home throughout.

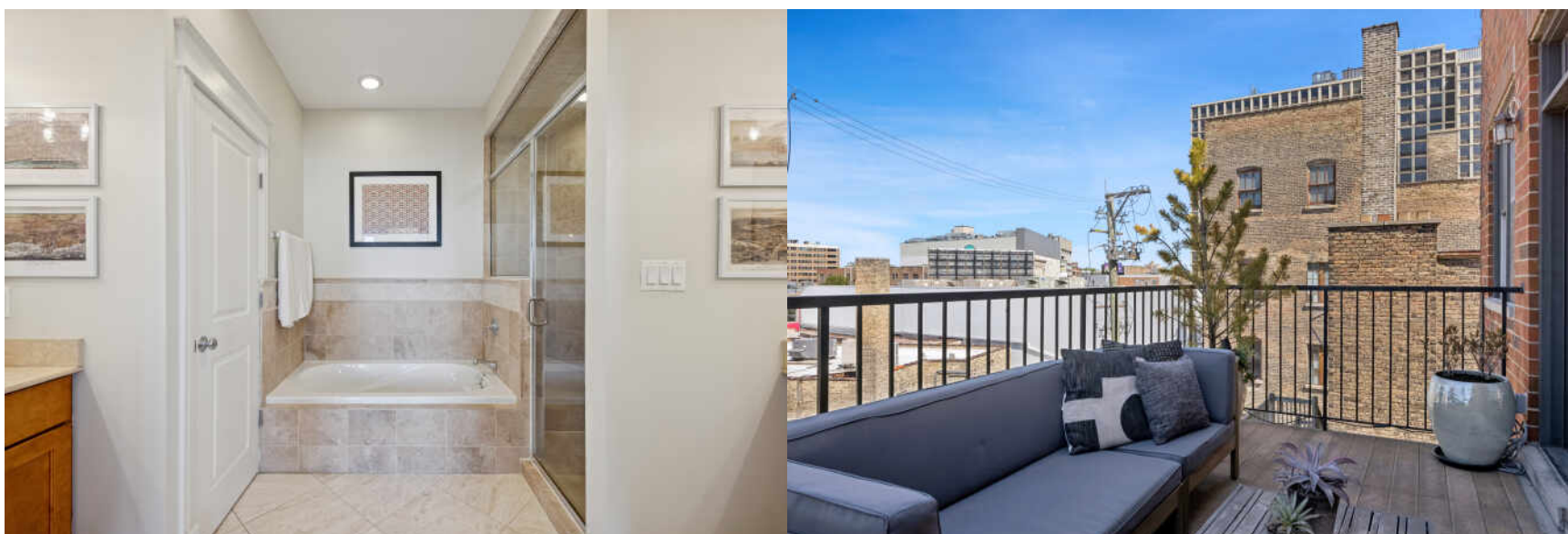
The king-sized primary suite features a walk-in closet and a spa-caliber stone bath with dual vanities, jetted soaking tub, private water closet, and steam shower. Interior stairwells lead directly to the private rooftop deck: an exceptional, magazine-worthy extension of the living space, fully equipped with water, gas, electric, irrigation, and integrated speakers.

Additional outdoor spaces include a grilling balcony off the kitchen and a private terrace accessible from both bedrooms. Garage parking is included.

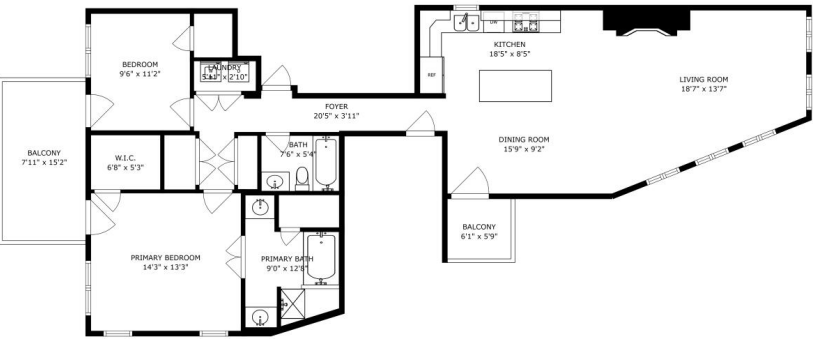
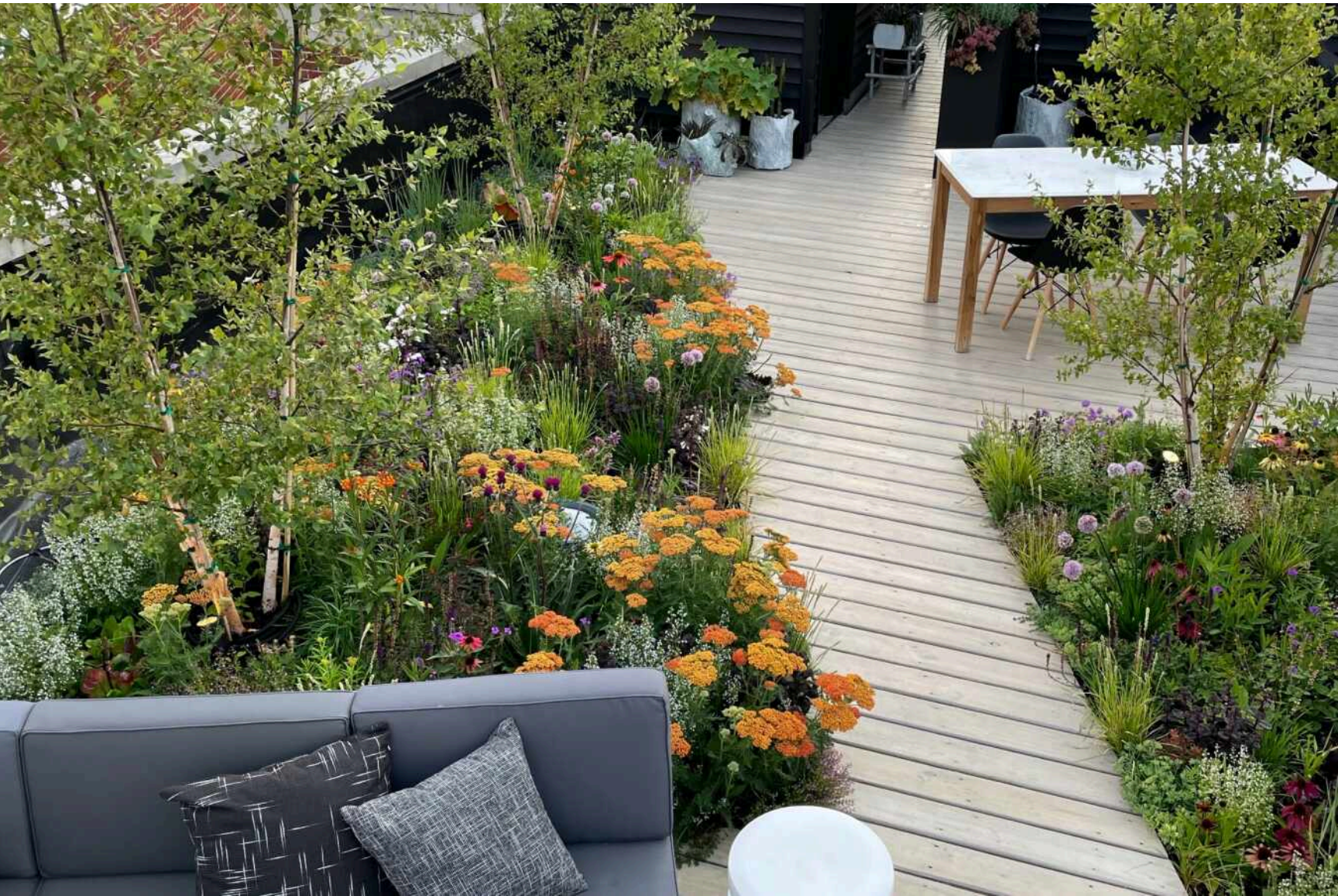
Set in an A+ Lincoln Park location just steps from the lake, Diversey Harbor, and the lakefront path, with easy access to Clark Street and Broadway shopping, dining, cafés, and Trader Joe's.

Walk Score 96 | Bike Score 91









SIZES AND DIMENSIONS ARE APPROXIMATE, ACTUAL MAY VARY.



SIZES AND DIMENSIONS ARE APPROXIMATE, ACTUAL MAY VARY.



LINCOLN PARK RESIDENTS HAVE IT ALL – FROM THE ARTS TO ITS FAMED ZOO – RIGHT IN THEIR BACKYARD.

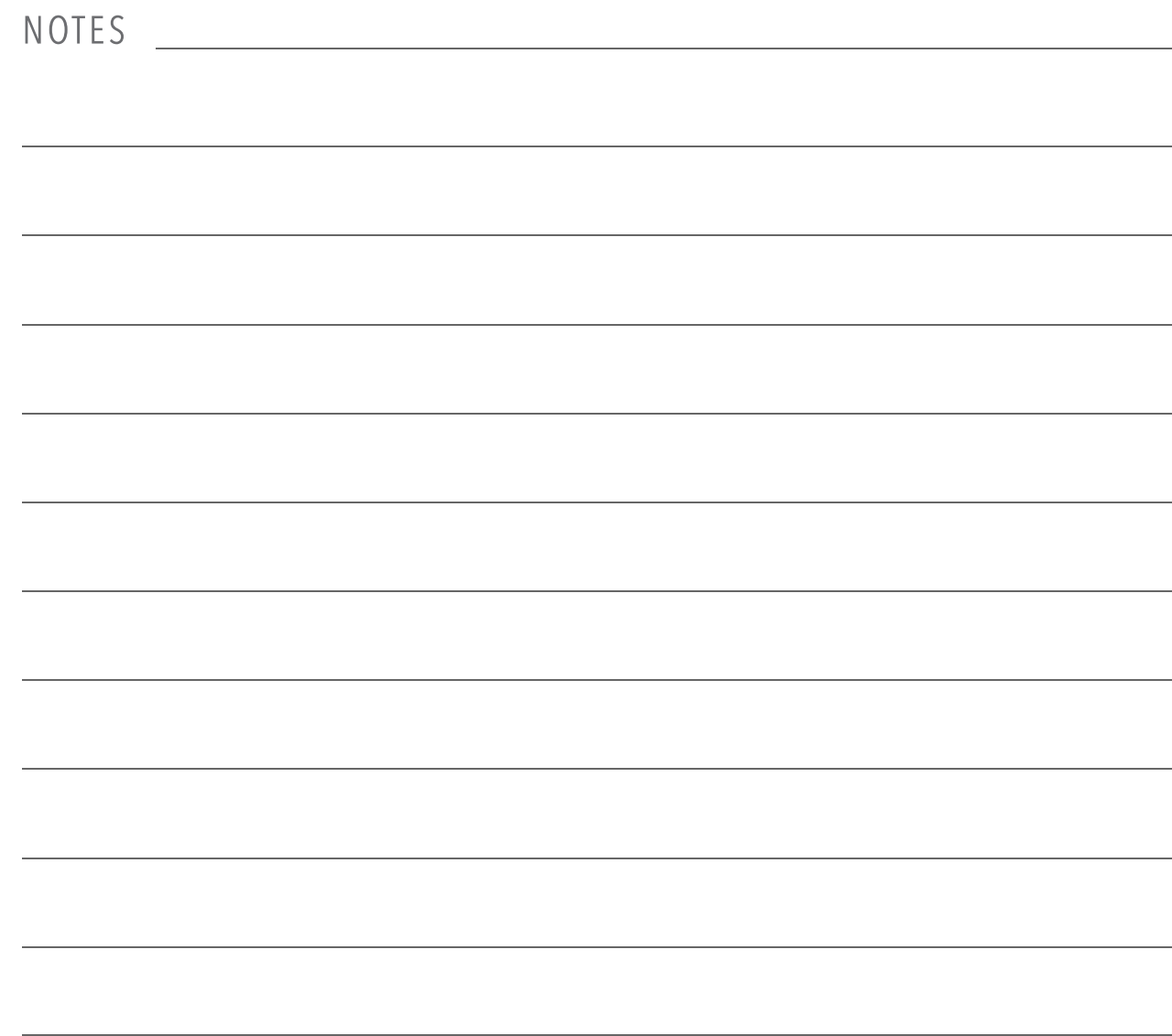
The neighborhood includes quiet tree-lined residential blocks, DePaul University, and two major museums in addition to the Lincoln Park Zoo, one of the country's oldest zoos. There's also a wide array of entertainment, eateries, and hotspots.

An evening in Lincoln Park might include seeing a play at the acclaimed Steppenwolf Theatre and dining at a Michelin-rated restaurant or a quaint neighborhood café. Sports fans will find as many dive bars with the game on as foodies will find fine-dining restaurants with al-fresco seating.

Lincoln Park is just as delightful by day. Residents are close to the lakefront and North Avenue Beach, parks, farmers markets, festivals, and countless shops, ranging from upscale boutiques on Armitage to larger retailers at the Clybourn Corridor.

Housing stock ranges from smaller townhomes and vintage condominiums to rehabs and new construction. Buyers around DePaul University can find loft condominiums in converted factories and warehouses. On its eastern edge, Lincoln Park features beautiful vintage brownstones along with high-rises with breathtaking views of the lake, park, North Pond Nature Sanctuary, and city skyline.

Located just two miles from downtown, Lincoln Park offers residents a quick commute to work. Public transportation abounds, with the CTA's Brown and Red lines serving the neighborhood in addition to several bus routes and Lake Shore Drive.





STEPHANIE WESSON

(773) 306-8700

THE WESSON GROUP

SWESSON@ATPROPERTIES.COM



All specifications, features, designs, price, assessments, taxes and materials are subject to change without notice. Depicted floor plans and architectural renderings are only an artist's impression.

