

273 DESPLAINES AVENUE
RIVERSIDE





ROOM DIMENSIONS

LIVING ROOM : 19' × 15'
KITCHEN : 13' × 13'
FAMILY ROOM : 17' × 12'
SUN ROOM : 10' × 9'
PRIMARY BEDROOM : 29' × 13'
BEDROOM : 13' × 11'
BEDROOM : 12' × 9'
LAUNDRY ROOM : 15' × 8'

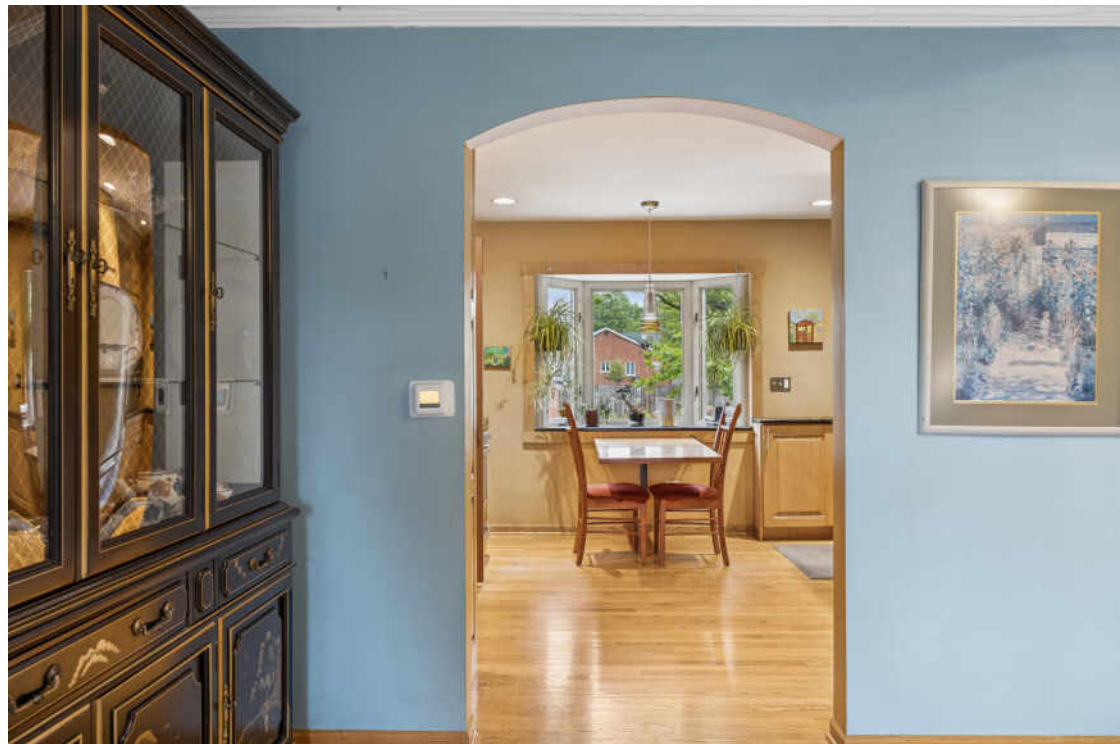
3 BEDROOM

1.1 BATH

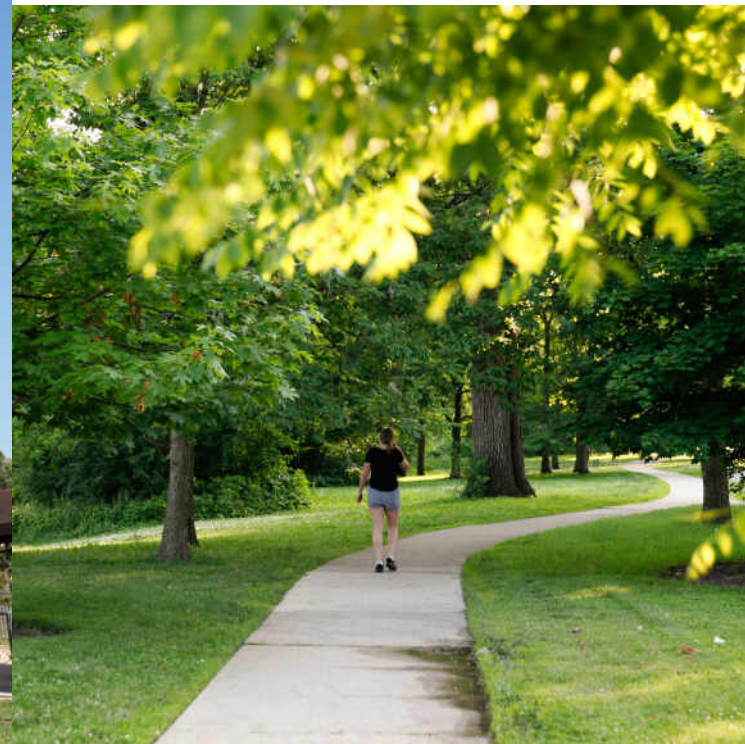
TAXES: \$9,608

A RIVERSIDE GEM

Impeccably maintained tri-level home in convenient Riverside location. Pride of ownership is crystal clear the second you walk into this charming 3 bed/1.5 bath home. First level features a spacious and inviting layout. Large living room with hardwood floors opens into a bright and sunny updated and custom designed kitchen. Granite counter tops, Italian glass back splash, and top of the line appliances. Second floor has two bedrooms and a full bath. Huge third level bedroom has endless possibilities! The sweetest new 3 season enclosed porch is the perfect spot to sit back, relax and enjoy the peaceful setting. Gorgeous porcelain tile patio overlooking the most beautiful backyard with flowering and fruit trees. Partially finished lower level is the perfect spot for an office, playroom or family room. Attached garage with EV charger, solar paneled roof. A Must See!







RIVERSIDE IS CONSIDERED TO BE THE FIRST PLANNED COMMUNITY IN THE UNITED STATES.

Incorporated in 1875, the historically recognized village is noted for its expansive parkways, charming town center, and early 20th century architecture.

The Riverside Landscape Architecture District was designated a National Historic Landmark in 1970. To retain its original aesthetic charm, the village even maintains 379 antique-style gas street lanterns.

Residents take great pride in the community's history and architecture, which is on display through tours at the Riverside Historical Museum and the Riverside Water Tower. Homes include well-maintained 1920s bungalows, huge Victorians, and early 20th century mansions.

The village features several restaurants including some that have been recognized as among the best in the Chicago area. There are also several unique boutiques and stores selling antiques and Victorian house fixtures – a nod to the town's rich architectural history.

Riverside students attend District 96 schools including four elementary schools and one junior high school. High school students attend Riverside Brookfield High School, part of the Riverside-Brookfield Township School District 208.

With a train station along Metra's BNSF Railway, Riverside is a short commute to Chicago's Union Station.



NOTES _____



JEFF BAKER

(708) 567-4901

JEFFBAKER@ATPROPERTIES.COM

BAKERSATBURLINGTON.COM



SARA BAKER

7085675015

SARABAKER@ATPROPERTIES.COM

BAKERSATBURLINGTON.COM