

276 CRESTWOOD VILLAGE  
NORTHFIELD



@properties®

CHRISTIE'S  
INTERNATIONAL REAL ESTATE



#### ROOM DIMENSIONS

LIVING/DINING : 20' × 16'

KITCHEN : 11' × 12'

ENTRY LIVING ROOM : 13' × 18'

PRIMARY BEDROOM : 18' × 16'

SECOND BEDROOM : 17' × 11'

## TOWNHOME IN THE HEART OF NORTHFIELD

Move right into this beautifully updated corner end unit in Crestwood Village with incredible natural light and a layout that just works. With its southern exposure, sunshine pours in all day, making the entire home feel bright, open, and inviting. The main level offers an easy, open flow with hardwood floors perfect for everyday living or hosting. The white kitchen is crisp and timeless with stone counters, marble backsplash, and stainless appliances, opening right into the dining and additional living space so you're always connected. Upstairs, you'll find two spacious bedrooms with great closet space and a renovated bath with clean, classic finishes and a large walk-in shower. A separate laundry room plus an oversized crawl space give you the storage everyone is always looking for. And the standout? A private paver patio that truly extends your living space, ideal for morning coffee, summer dinners, or just unwinding at the end of the day. All of this literally in TOWN, just moments to all things Northfield has to offer, shops, dining, library, everything you need. Easy living, done right.

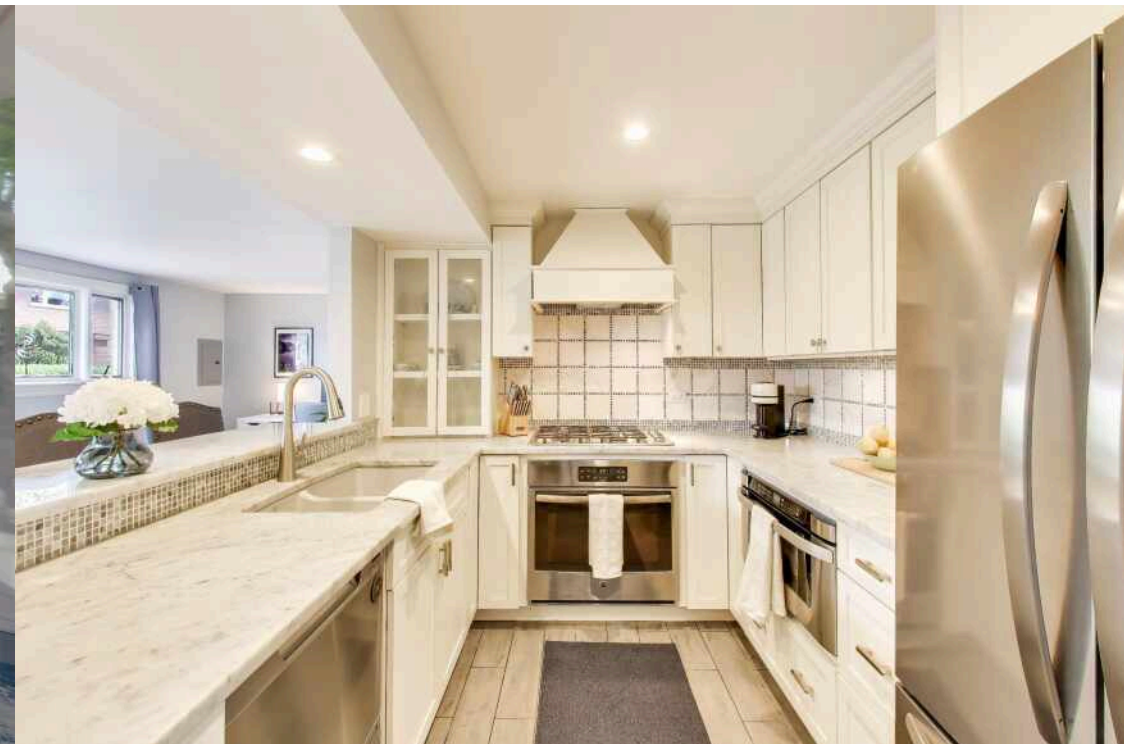


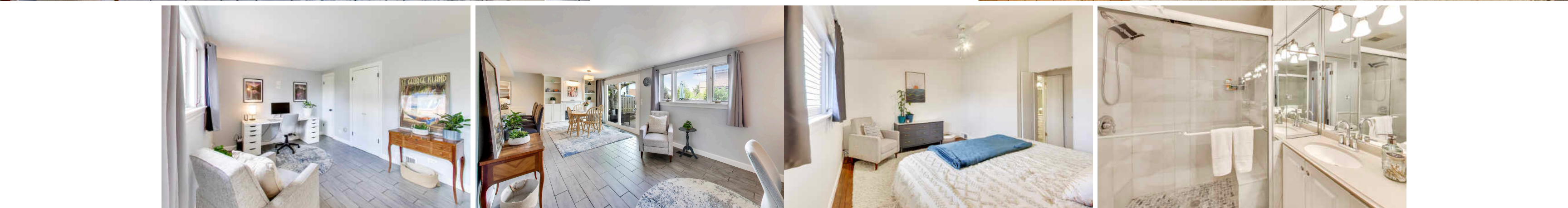
2 BEDROOM

1.1 BATH

TAXES: 3,436

ASSESSMENTS: 315





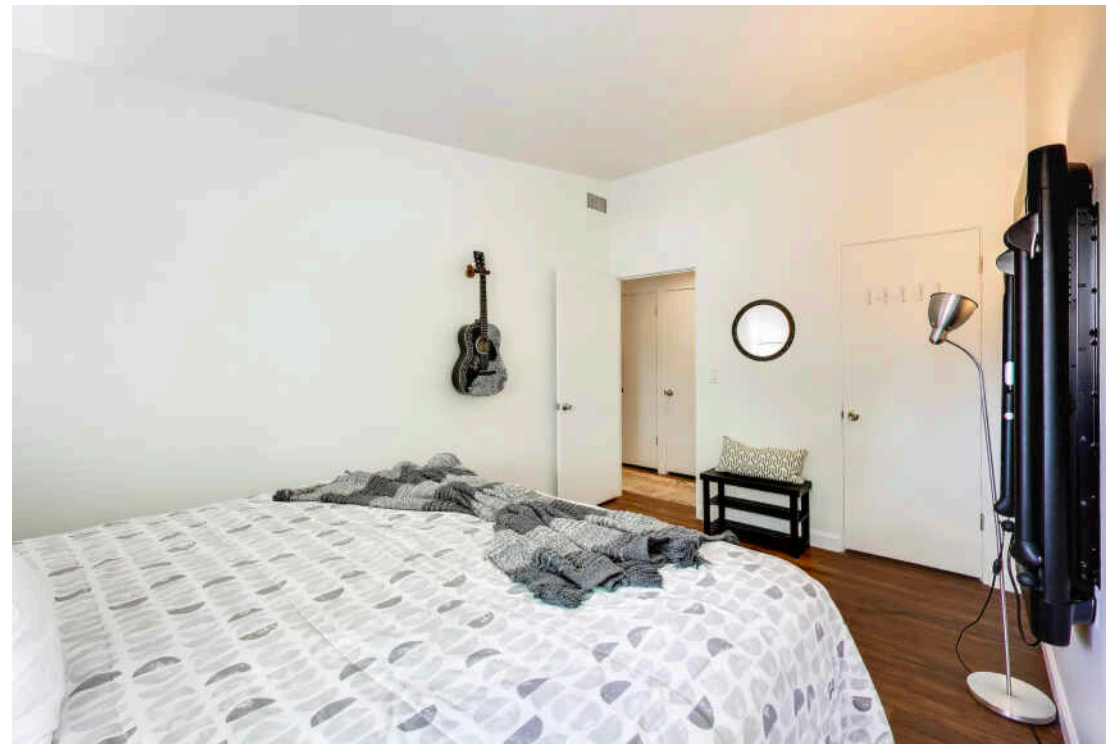


## **NORTHFIELD IS A COMMUNITY WITH ENDURING CHARM AND TRANQUILITY.**

Known for its distinctly residential character and small-town vibe, Northfield is defined by sprawling ranch homes with spacious yards, European-inspired mansions on oversized lots, and condominiums in quiet locales. While the community has experienced growth through new construction, its welcoming atmosphere still remains.

Convenient access to I-94 and I-294 make for an easy drive to the city and O'Hare International Airport. Meanwhile, neighboring towns such as Winnetka and Glenview have Metra stations providing train service to downtown Chicago.

In addition to nationally acclaimed New Trier High School, Northfield offers residents proximity to corporate headquarters as well as an abundance of shops, restaurants, parks, and forest preserves.





## KEKI CANNON

312.860.3390

8478810200

KEKI@ATPROPERTIES.COM

WWW.KEKICANNON.COM

T H E **KEKI** TEAM  
CANNON

**@properties** | **CHRISTIE'S**  
INTERNATIONAL REAL ESTATE