



2800 N LAKE SHORE DRIVE #902
OVERLOOKING LINCOLN PARK IN LAKEVIEW

@properties®

CHRISTIE'S
INTERNATIONAL REAL ESTATE



ROOM DIMENSIONS

LIVING ROOM : 21' × 15'

DINING ROOM : 11' × 10'

KITCHEN : 10' × 08'

PRIMARY BEDROOM : 16' × 11'

SECOND BEDROOM : 15' × 11'

2 BEDROOM

2 BATH

TAXES: \$9,651

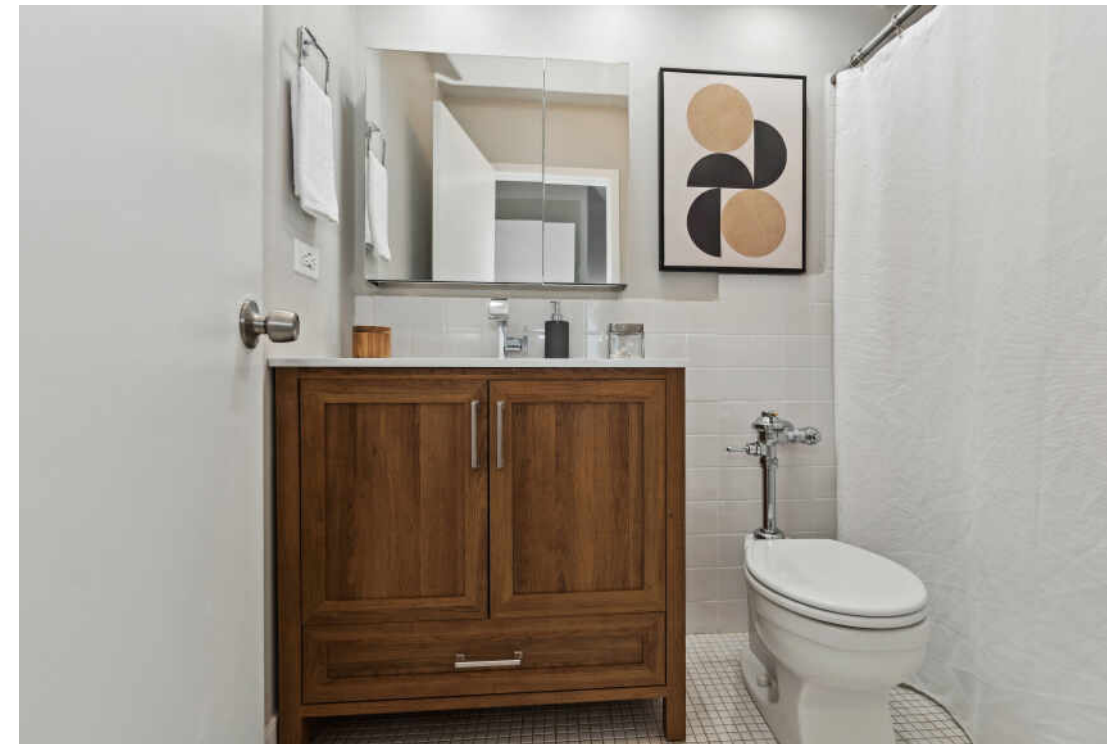
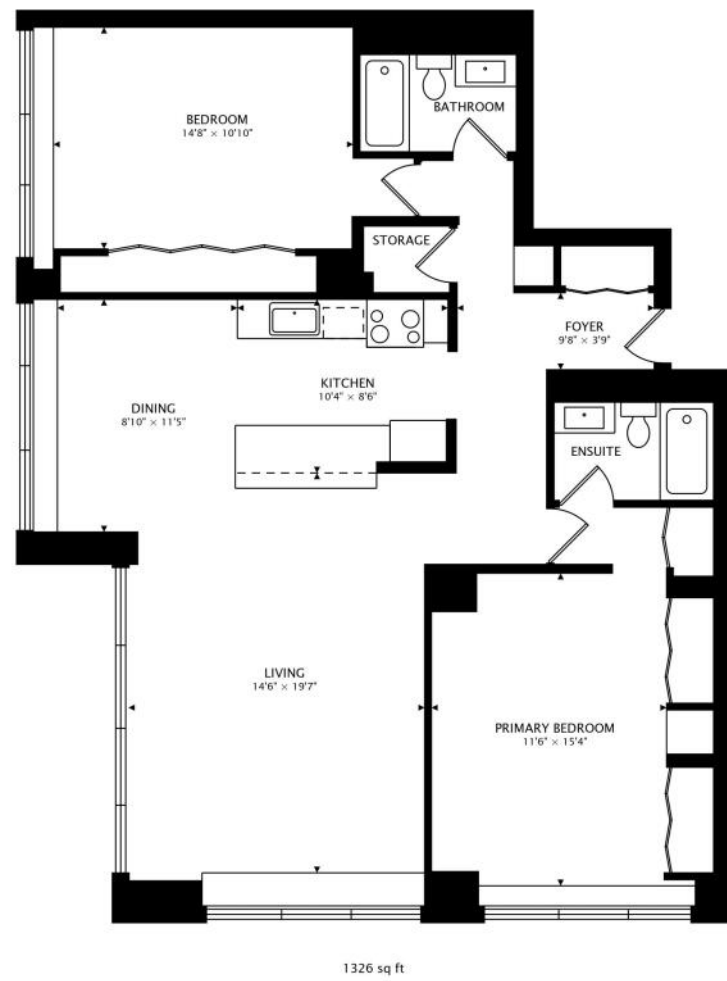
ASSESSMENTS: \$1,208 / MONTH

SKYLINE AND SUNRISE VIEWS

Stunning corner unit in rare "02" tier...prized for the floor plan inside and unobstructed wrap around south and east views outside overlooking Lincoln Park, the expansive blue waters of Lake Michigan and the panoramic Chicago skyline. Kitchen features gray stained maple wood soft close cabinetry, Silestone counters, new porcelain ultra-white subway backsplash and all stainless appliances including a Fisher-Paykel counter depth double door top refrigerator with purified water filter for ice and drinking water. Newly finished white oak hardwood with parquet planking & white stain. Blonde wood closet organizing systems in both bedrooms and front hall closet. Huge walk in pantry. This is a view unit well above the tree tops over looking the lush greenery of Lincoln park to the architectural mastery of the Chicago skyline rising beyond and about as high as you can go and still feel grounded and in touch with people jogging, biking, boating, enjoying picnics taking their walks. Assessments include heat, air, cable, internet, wifi. Enjoy a full amenity building with 24 hour door staff, outdoor pool, rooftop sundeck, exercise room, party room and on-site dry cleaners. Park is just across the street









NOTES

[illegible]



MICHAEL ZUKER

(312) 543-6766

MIKEZUKER@ATPROPERTIES.COM

mike[▲]zucker

@properties®

CHRISTIE'S
INTERNATIONAL REAL ESTATE

All specifications, features, designs, price, assessments, taxes and materials are subject to change without notice. Depicted floor plans and architectural renderings are only an artist's impression.

