

2816 CORDGRASS ROAD
NAPERVILLE





ROOM DIMENSIONS

LIVING ROOM : 14' × 11'

FAMILY ROOM : 20' × 20'

DINING ROOM : 15' × 12'

KITCHEN : 15' × 11'

PRIMARY BEDROOM : 21' × 12'

SECOND BEDROOM : 13' × 12'

THIRD BEDROOM : 13' × 12'

FOURTH BEDROOM : 13' × 12'

SUN ROOM : 14' × 13'

OFFICE : 13' × 10'

5 BEDROOM

3 BATH

TAXES: \$13,108

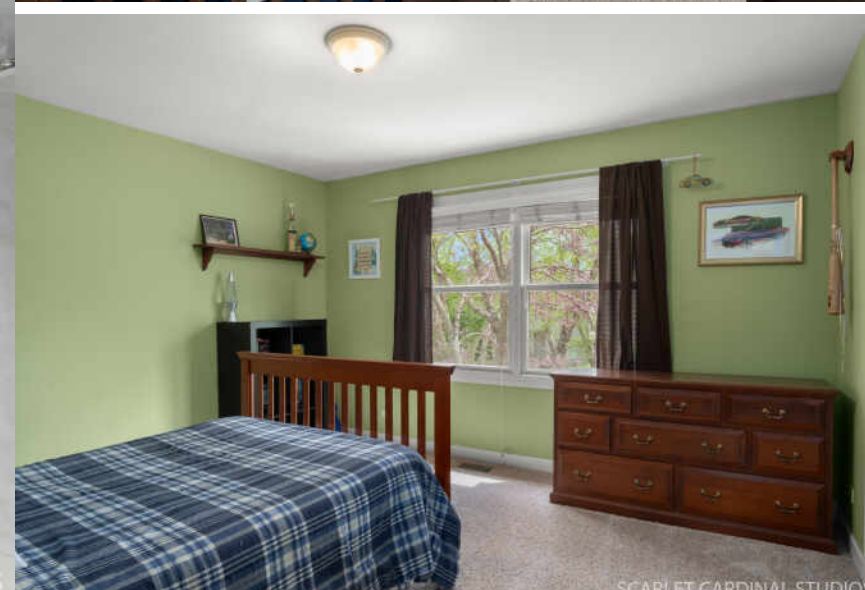
ASSESSMENTS: \$1,110 / YEAR

Step into a home that just feels right from the moment you walk in. Warm, inviting spaces offer the perfect balance of comfort and connection, with room to gather, relax, and enjoy everyday life. Whether it's quiet mornings, lively evenings, or hosting friends and family, this home adapts effortlessly to it all. The finished lower level adds even more flexibility, while the backyard and 3 season room create an easy extension of your living space, ideal for unwinding or entertaining. A place where life simply fits.

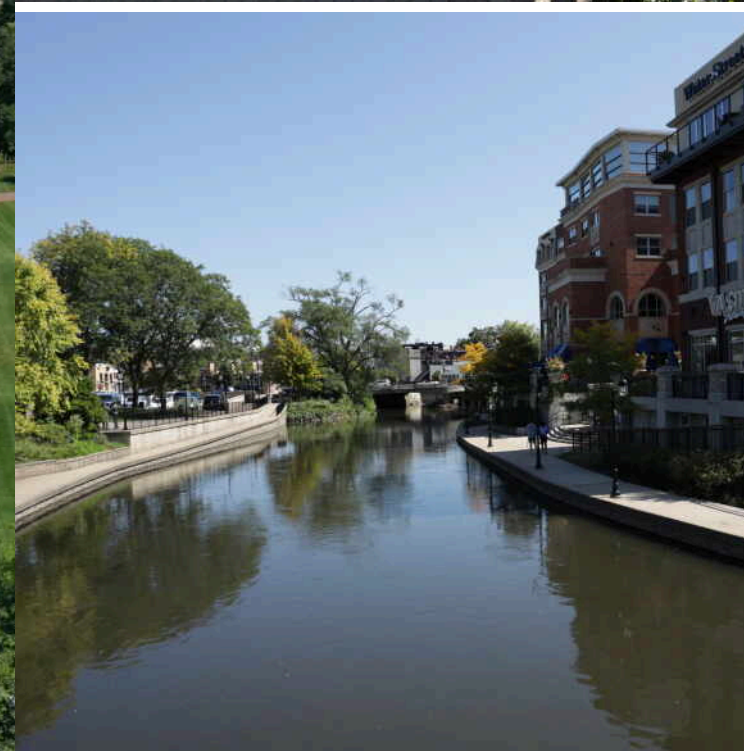
- Hardwood Floors
- 3 car garage
- Finished basement
- Main level office
- First floor full bath
- Beautiful eat-in kitchen
- Stainless appliances
- Oversized family room
- Fireplace with built in bookshelves
- Spacious Primary Suite
- Three - Season room
- Fenced backyard











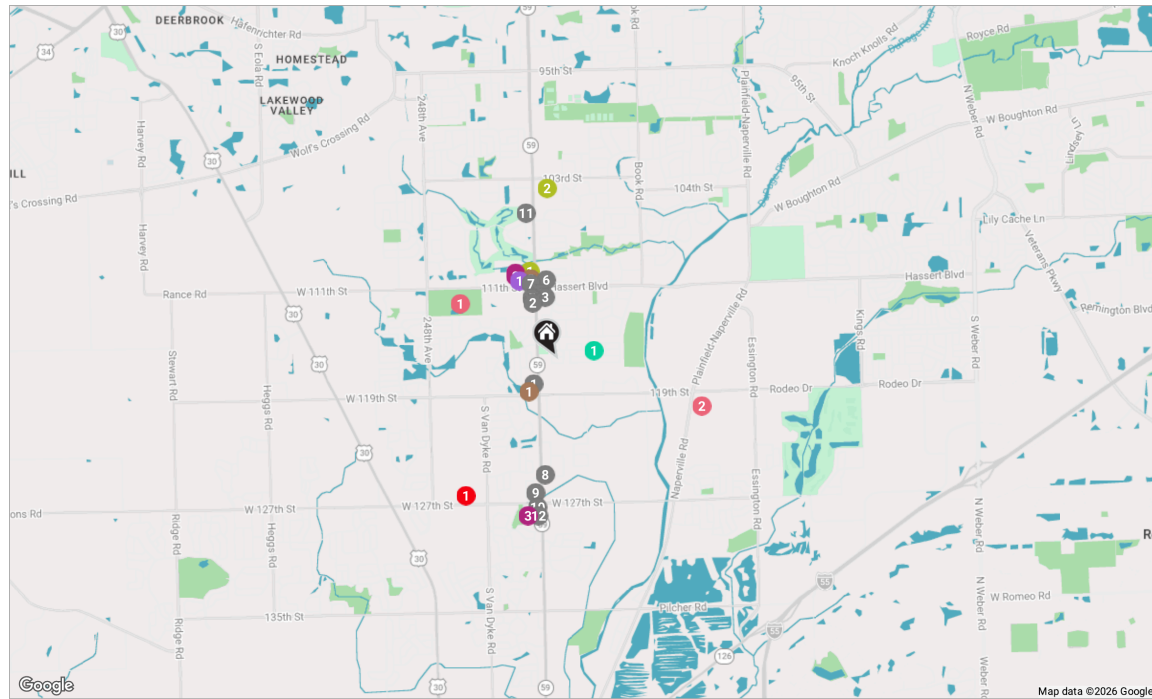
NAPERVILLE IS A VIBRANT COMMUNITY THAT COMBINES THE AMENITIES OF A MODERN CITY WITH THE CHARM OF A SMALL TOWN.

Among those amenities is a popular Riverwalk that features nearly two miles of brick paths and bridges as well as recreational facilities along the DuPage River. Nearby Centennial Beach is another attraction that draws thousands of visitors and goes from zero to 15 feet deep.

An assortment of local boutiques, well-known retailers, and fine restaurants can also be found in downtown Naperville. Meanwhile, there's endless entertainment for all ages thanks to the DuPage Children's Museum, Summer Place Theatre, Magical Starlight Theatre, and DuPage Symphony Orchestra.

While Naperville has seen significant growth over the past few decades, the city maintains a strong sense of community through annual events, from farmers markets and sidewalk sales to festivals and a summer concert series. The community's character is also preserved in the Naperville Historic District and Naper Settlement, where visitors can step back in time at an outdoor museum.

With plentiful amenities and diverse housing stock in a variety of styles and price points, Naperville has received numerous accolades and continues to capture the interest of homebuyers. The city also offers Metra and Amtrak service, providing convenient access to downtown Chicago and surrounding communities.



RESTAURANTS

- 1 Buffalo Wild Wings
11820 ROUTE 59, 0.3 MI
- 2 Burrito Parrilla Mexicana - Naperville South
5059 ACE LANE, 0.6 MI
- 3 EggCited
2728 HASSERT BOULEVARD #160, 0.6 MI
- 4 Starbucks Coffee Company
2812 HASSERT BOULEVARD, 0.6 MI
- 5 Popeyes Louisiana Kitchen
5108 CLARENCE DRIVE, 0.6 MI
- 6 Little Italian Pizza West
2735 HASSERT BOULEVARD #103, 0.7 MI
- 7 Sharko's BBQ
4931 ROUTE 59 SUITE 127, 0.7 MI

- 8 Vita Bella Pizza
12443 ROUTE 59 STE 115, 1.1 MI
- 9 Panera Bread
12632 ROUTE 59 SUITE 102, 1.3 MI
- 10 Chipotle Mexican Grill
12720 SOUTH ROUTE 59, 1.4 MI
- 11 Tamarack Golf Club
24032 ROYAL WORLINGTON DRIVE, 1.4 MI
- 12 Potbelly
12750 SOUTH ROUTE 59, 1.5 MI

COFFEE

- 1 Maple Butter Cafe
24020 WEST 119TH STREET, 0.4 MI
- 2 MOTW Coffee and Pastries
4931 ROUTE 59 SUITE 105, 0.8 MI

SHOPPING

- 1 PetSmart
3111 1111TH STREET, 0.9 MI
- 2 T.J. Maxx
3111 1111TH STREET, 0.9 MI
- 3 Target
12800 ROUTE 59, 1.5 MI

GROCERY

- 1 Angelo Caputo's Fresh Markets - Naperville
3115 1111TH STREET, 0.8 MI

GYM

- 1 Karve Pilates
4827 ROUTE 59 #105, 0.9 MI

- 2 Life Time Fitness
4111 TOWER COURT, 1.6 MI

MEDICAL

- 1 Endeavor Health | Health Center A - North Plainfield on 127th Street
24600 WEST 127TH STREET BUILDING A, 1.5 MI

ENTERTAINMENT

- 1 Commissioners Park
3704 1111TH STREET, 1.0 MI
- 2 Plainfield East High School
12001 NAPERVILLE ROAD, 1.4 MI

PARKS

- 1 South Pointe Park
5504 SWITCH GRASS LANE, 0.4 MI

NOTES



MEREDITH PATCHETT

773.329.3838

MPATCHETT@ATPROPERTIES.COM

WWW.MEREDITHPATCHETT.COM

MEREDITH  PATCHETT
REALTOR®

 | CHRISTIE'S
INTERNATIONAL REAL ESTATE

All specifications, features, designs, price, assessments, taxes and materials are subject to change without notice. Depicted floor plans and architectural renderings are only an artist's impression.

