

2828 N TALMAN AVENUE #R
AVONDALE





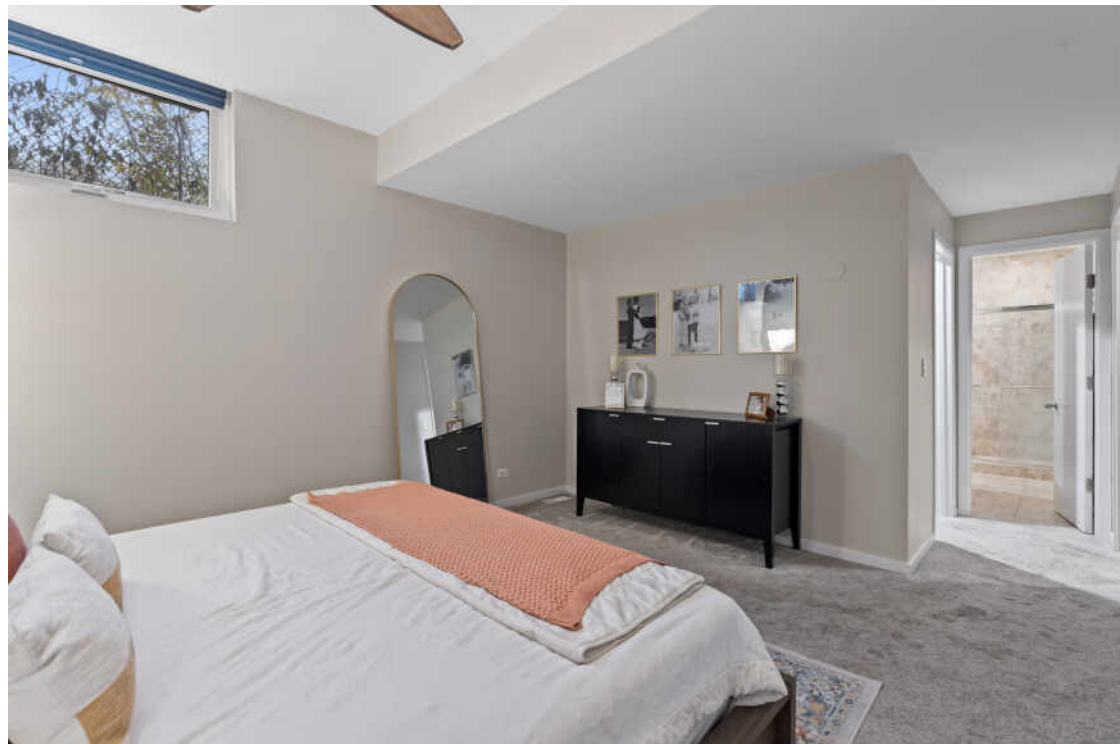
3 BEDROOM
3.1 BATH
TAXES: \$11,635.23
ASSESSMENTS: \$479/MONTHLY

EXPANSIVE, ALMOST 3000 SQUARE FOOT 4 LEVEL TOWNHOME IN HIP AVONDALE NEIGHBORHOOD, JUST NAMED TIMEOUT'S 5TH COOLEST NEIGHBORHOOD TO LIVE IN THE WORLD!

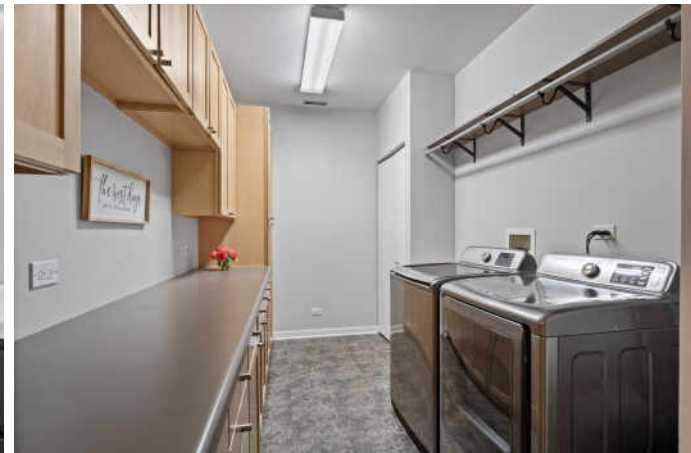
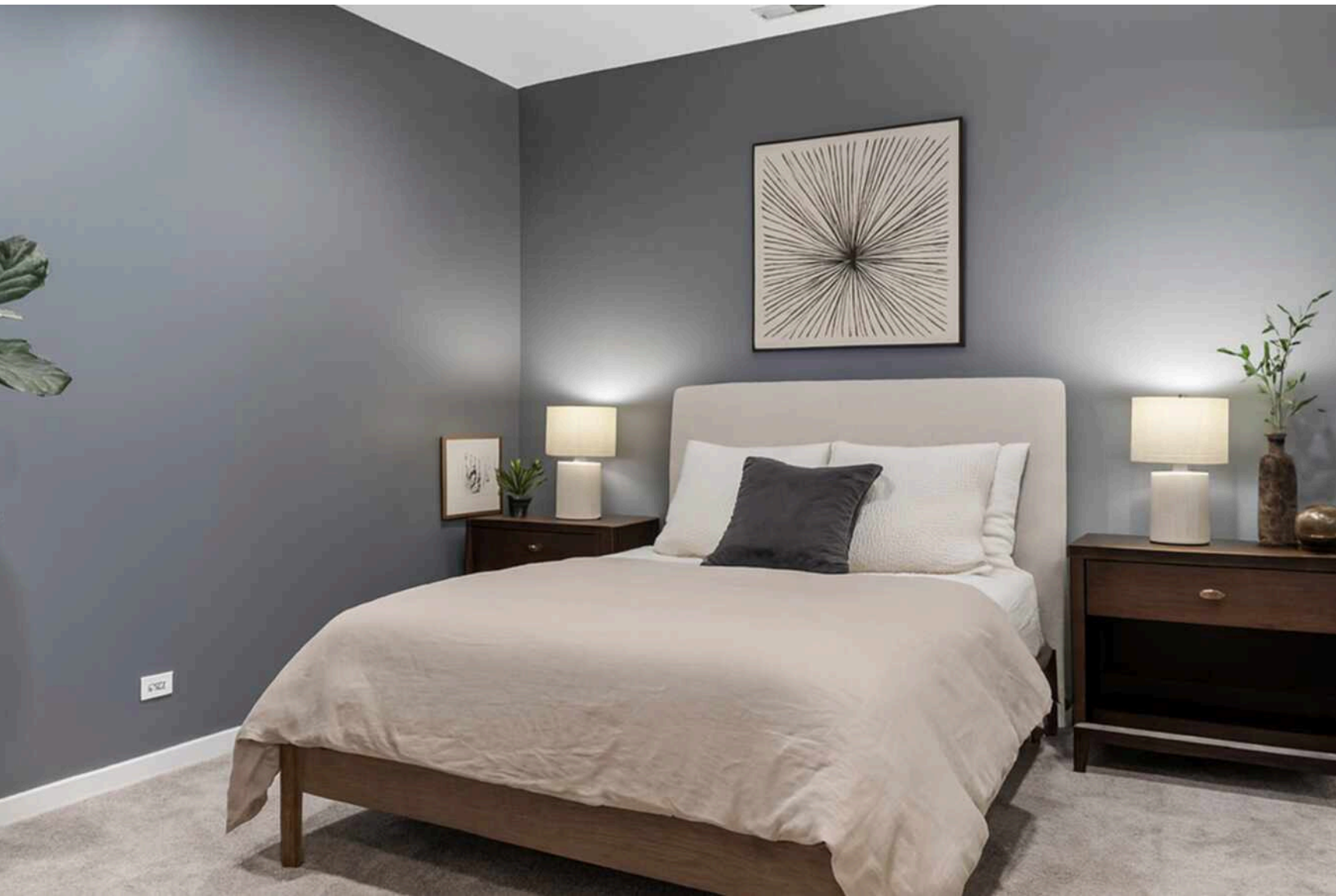
- Expansive, airy main living area with unobstructed west exposure and stunning nightly sunsets.
- Private roof deck for outdoor entertaining.
- Newer dual-pane windows and incredible ceiling height.
- Ample professionally organized storage throughout.
- Garage parking included.
- Spacious eat-in white kitchen with gold fixtures and pendant lighting, Granite countertops + large island with barstool seating, and Full suite of stainless-steel appliances.
- King-size Primary suite with a fully organized walk-in closet with Ensuite bath with separate shower and soaking tub, and dual-sink vanity.
- 2nd bedroom with adjacent full guest bath.
- Enormous 3rd bedroom / flex space ideal for fitness, work from hom, guest suite, or playroom (located on 1st floor).
- Close to parks, playgrounds, sports facilities, and many of the city's trendiest restaurants, cafés, and bars.
- Convenient to grocery stores, public transportation, and easy access to the expressway for seamless travel.

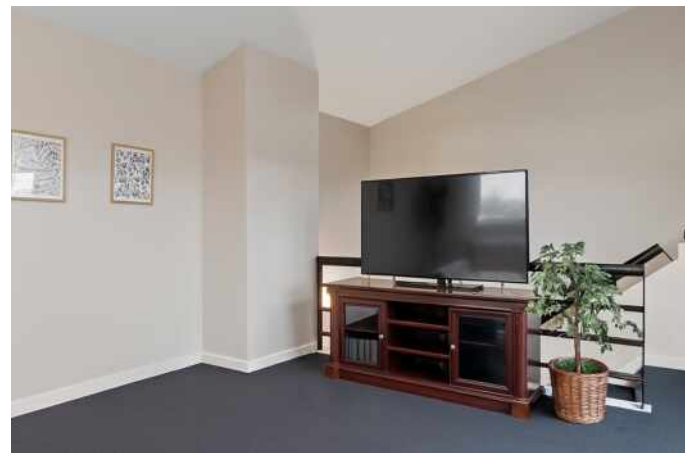
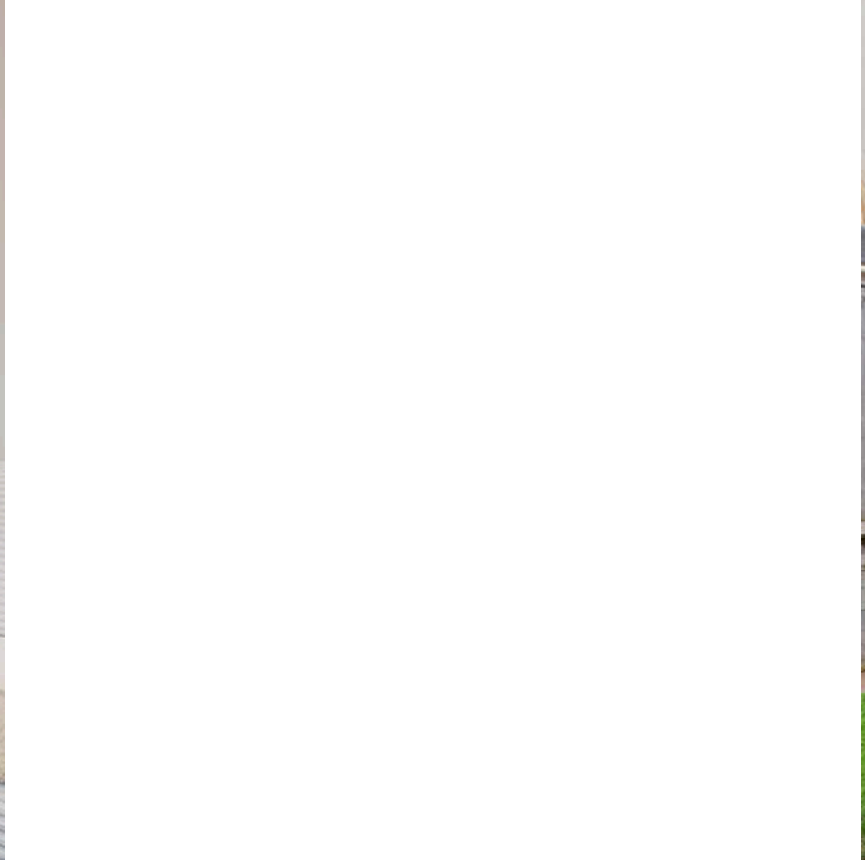














ELENA THEODOROS-TAMILLO

219.718.0061

ELENA@REFINERESIDENTIAL.COM



All specifications, features, designs, price, assessments, taxes and materials are subject to change without notice. Depicted floor plans and architectural renderings are only an artist's impression.

