

**2842 N. DAWSON**  
AVONDALE/LOGAN SQUARE





#### ROOM DIMENSIONS

LIVING ROOM : 20' × 12'  
 KITCHEN : 12' × 12'  
 DINING ROOM : 18' × 11'  
 PRIMARY BEDROOM : 17' × 12'  
 2ND BEDROOM : 14' × 11'  
 3RD BEDROOM : 13' × 9'  
 FAMILY ROOM : 17' × 11'  
 ATTIC : 27' × 19'  
 FOYER : 15' × 7'  
 WALK-IN CLOSET : 10' × 7'  
 PATIO : 35' × 24'

3 BEDROOM

2.5 BATH

TAXES: \$12,001.50

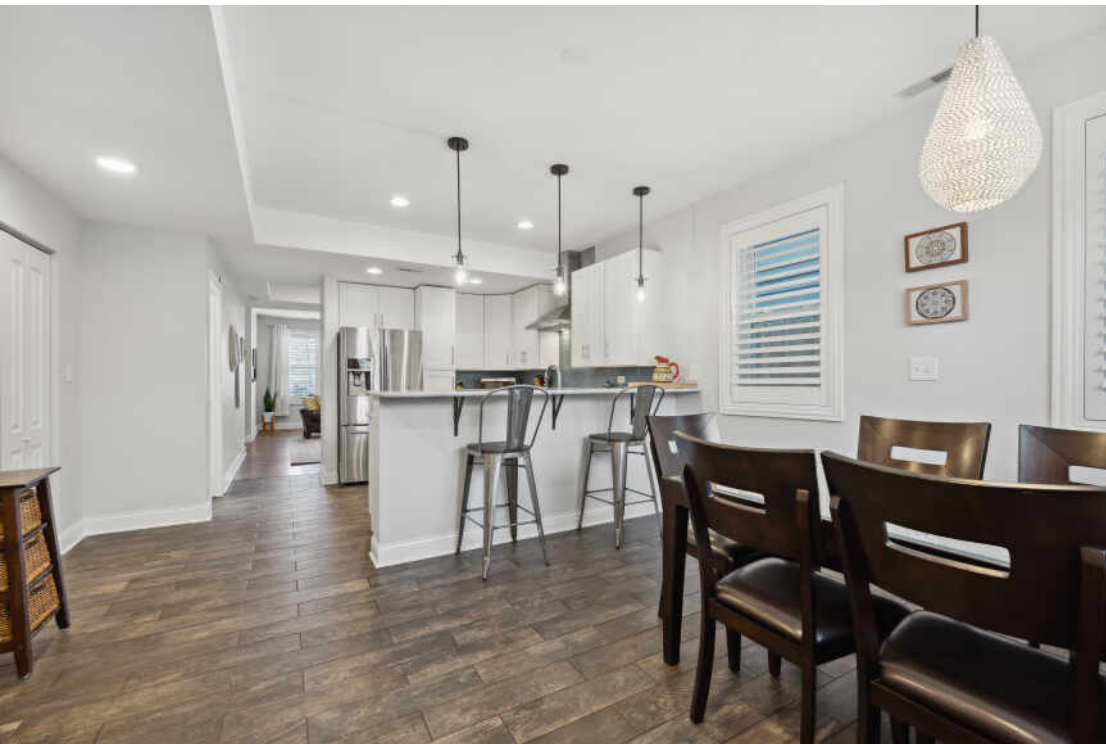
## BEAUTIFUL 2014 GUT REHAB SINGLE FAMILY

- Gorgeous home was fully renovated with a 3rd floor addition in 2014 boasting new electrical, plumbing, fiber cement board siding, dual zoned HVAC & tankless hot water heater
- The formal foyer leads to a spacious living room highlighted by a lovely fireplace
- Eat-in kitchen features white cabinetry, white quartzite countertops, eat-in breakfast bar, glass tile backsplash, and Samsung appliances with a Viking stove
- 1st floor is finished off by a half bathroom, a large dining area, laundry with LG front loading washer & dryer and utility sink, and shutters throughout
- Skylight lit stairs takes you to the 2nd floor with 3BRs & 2BAs
- Fantastic primary suite can easily accommodate a king-sized bed which includes a large organized walk-in closet, and a luxurious en-suite bathroom with a soaker tub, separate rain shower, and contemporary porcelain tile work
- Both the 2nd & 3rd bedrooms are generously sized with large closets and both can fit queen sized beds easily
- 2nd bathroom is nicely appointed with subway tiles
- Separate family room, that's flooded with light, on the 3rd floor so you can avoid any below grade "dungeon basement" living
- Huge unfinished attic space is great for those Costco runs and plenty of extra storage
- Professionally landscaped front and giant back yard with the latter space including an 834 sq ft paved patio and lawn that's secured by a privacy fence
- Oversized 2-car garage with party door
- Walk to everything location is steps to incredible restaurants, nightlife, shops, CTA buses & El, parks, easy access to I-90/94





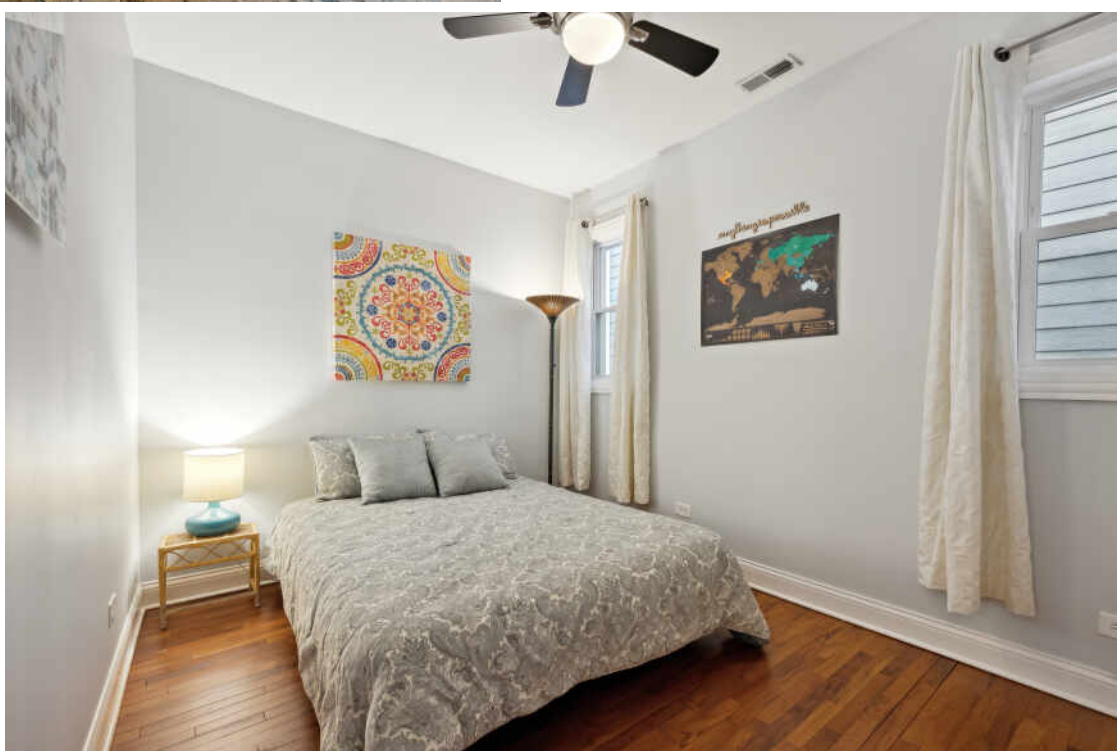








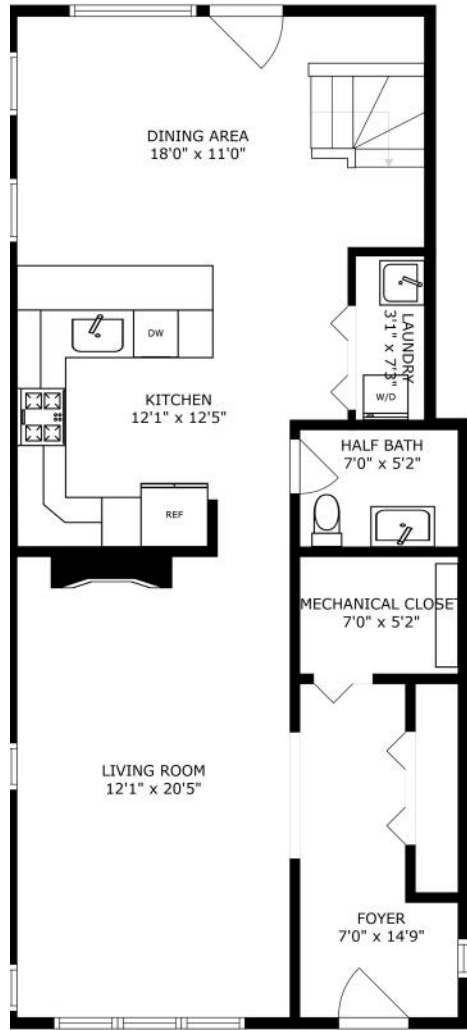








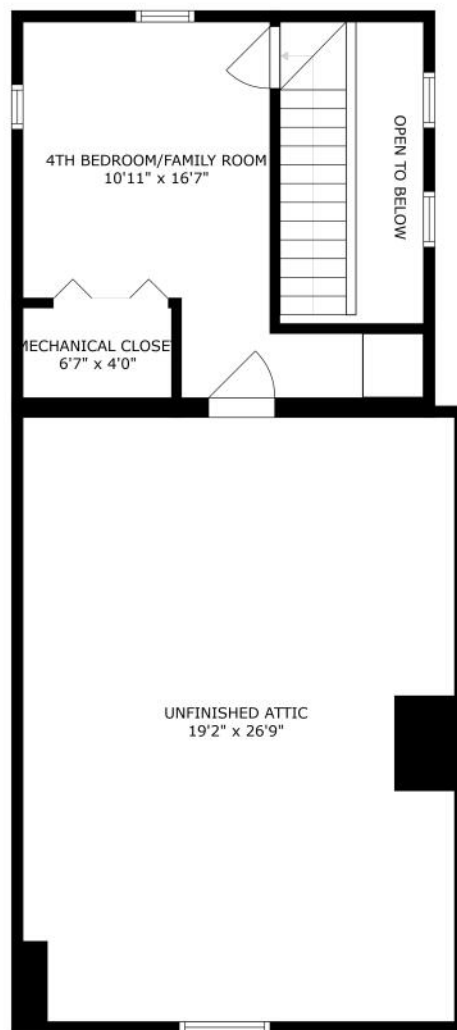




FLOOR 1

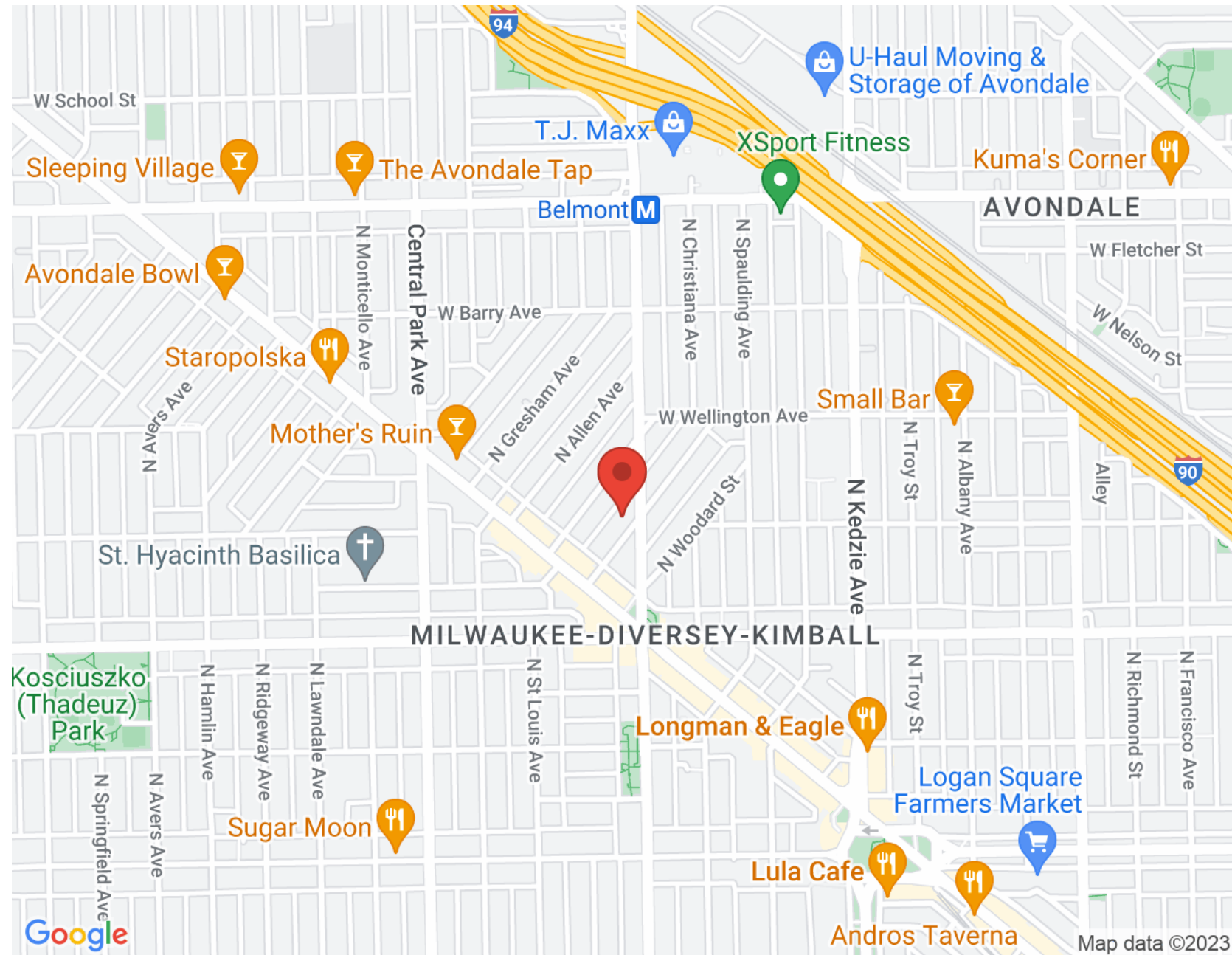


FLOOR 2



FLOOR 3

SIZES AND DIMENSIONS ARE APPROXIMATE, ACTUAL MAY VARY.







## K.C. LAU

CELL (312) 315-7163

KCLAU@ATPROPERTIES.COM

WWW.ATPROPERTIES.COM/SITE/KCLAU

THE  
CHICAGO  
COLLABORATIVE